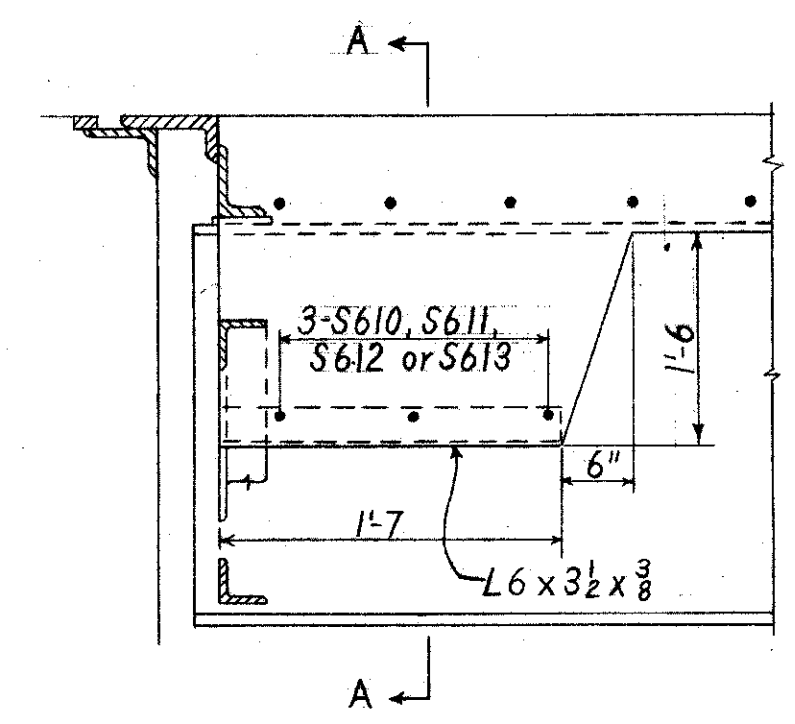
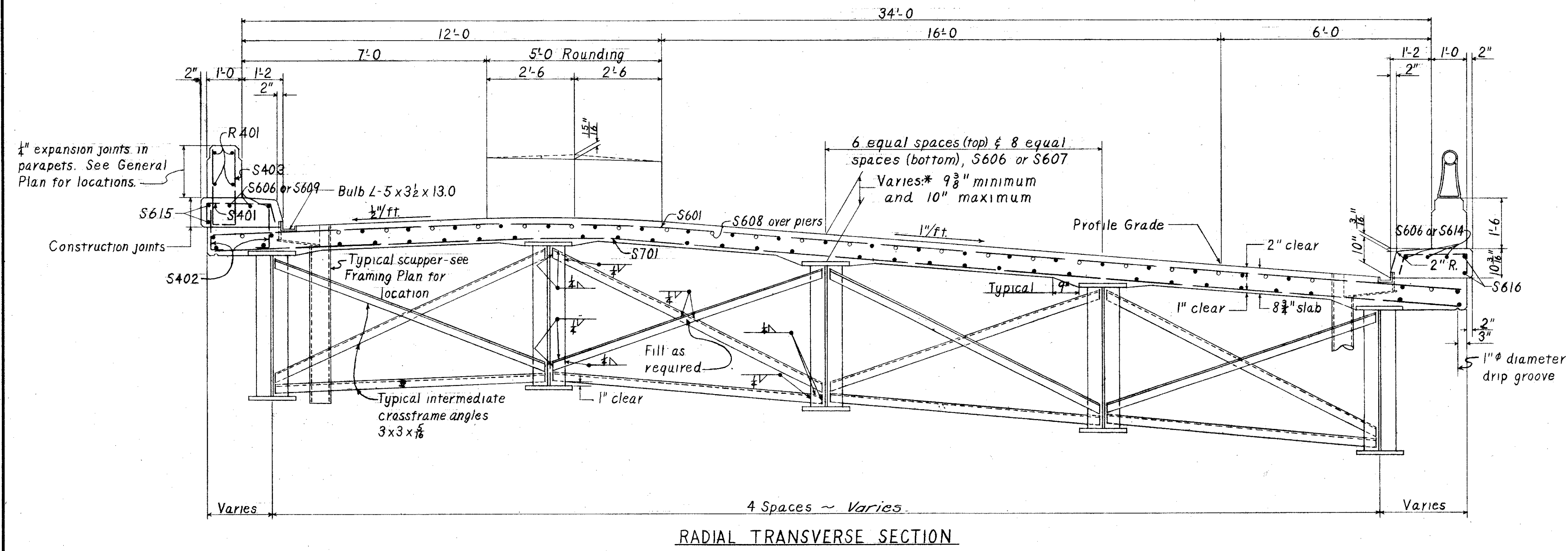


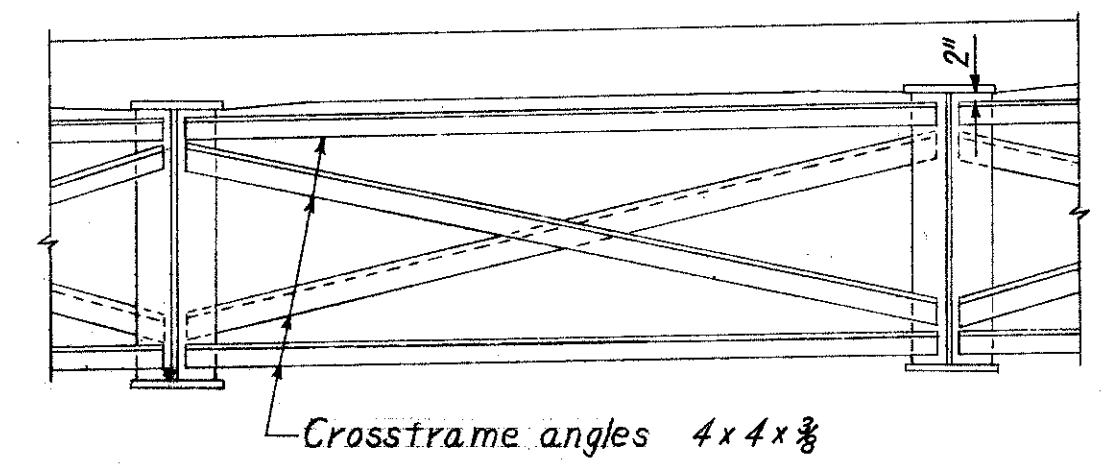
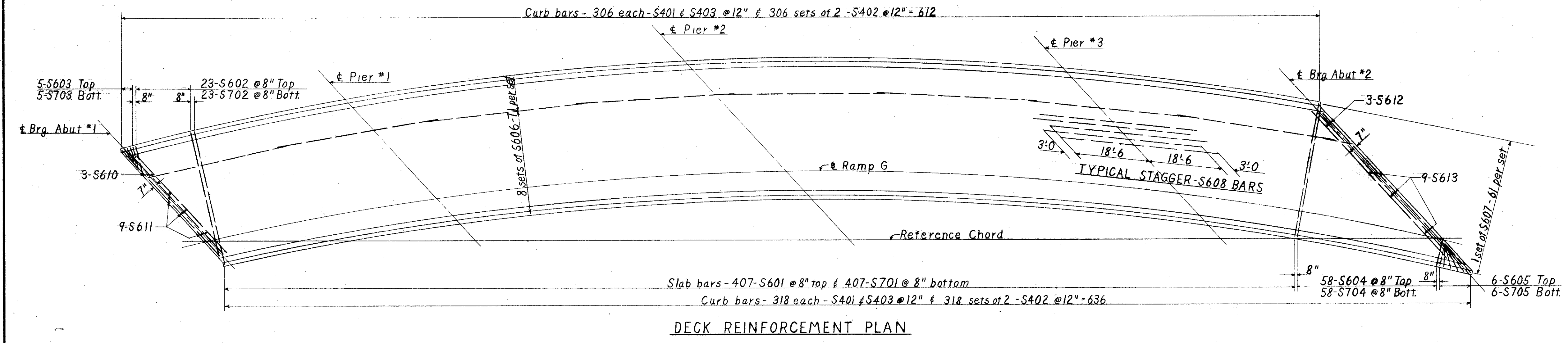
LAKE COUNTY  
SEC. LAK-2 - 10.35



COUNTERWEIGHT FOR END SPANS

NOTES

- Welding of structural steel shall be Class "A" except as otherwise shown. Welds shown as field welds may, at the option of the contractor, be made in the shop.
- All concrete shall be Class "C".
- Concrete and reinforcing steel above parapet construction joints shall be included with railing for payment.
- Deck placing procedure: In placing the deck concrete, construction joints will be permitted parallel to the transverse reinforcing steel and near the middle of any span. Because of the flow of curing water from the surface of previously placed deck concrete, the sequence of pours shall be upgrade.
- Deck slab depth: \*The distance shown from top of deck slab to top of steel beam is the nominal dimension. The quantity of deck concrete to be paid for shall be based on this dimension, even though deviation from it may be necessary because the top flange of the girder may not have the exact camber of conformation required to place it parallel to the finished grade. In a curved deck on straight steel girders the distance from the top of the slab to the top of the girders will vary from end to end.
- All transverse reinforcing steel shall be placed parallel to the intermediate crossframes. Longitudinal steel shall be lapped a minimum of 1'-11". All reinforcing steel shall have 2" of cover unless otherwise shown.



SPECIAL CROSSFRAME AT BEND POINTS

MICROFILMED  
JUL 1 1985

SEC. L-33						
PREPARED BY CAPITOL ENGINEERING ASSOCIATES, DILLSBURG, PA. FOR						
STATE OF OHIO DEPARTMENT OF HIGHWAYS DIVISION OF DESIGN AND CONSTRUCTION BUREAU OF BRIDGES						
DECK DETAILS BRIDGE NO. LAK-2 - 1350 RELOC. S.R.2 UNDER S.R.44 RAMP G LAKE COUNTY						
STA. 613 + 25.24						
DESIGNED	DRAWN	TRACED	CHECKED	REVISED	DATE	REVISED