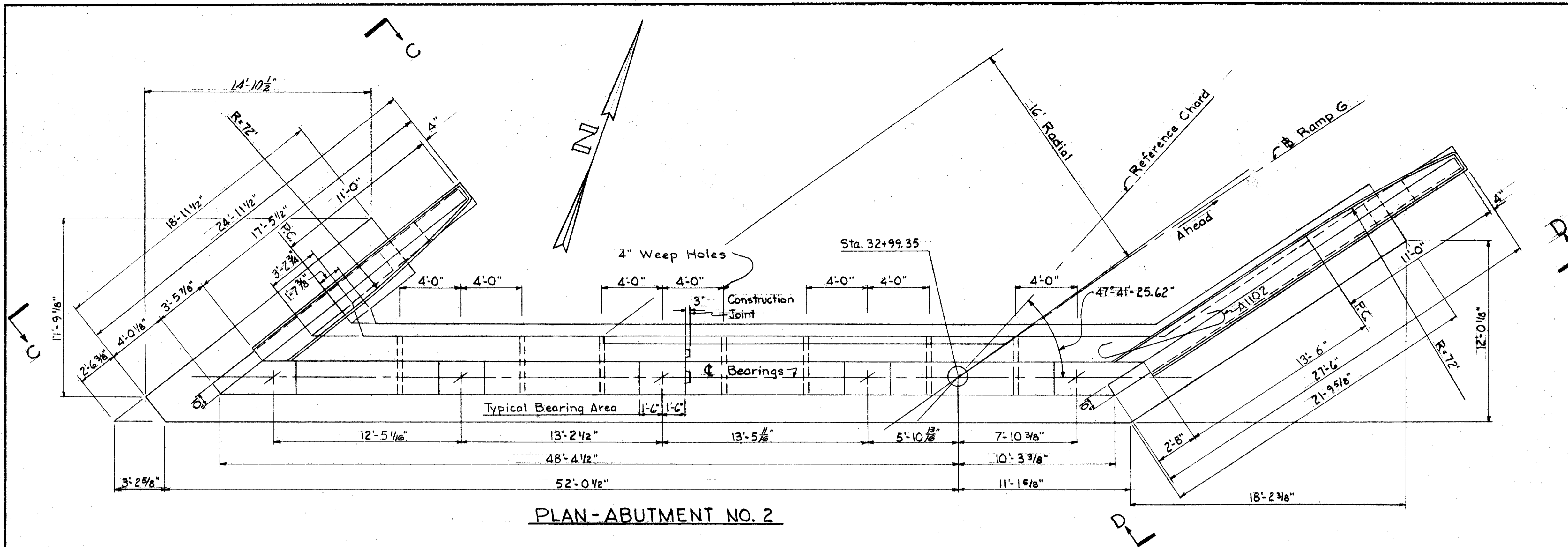
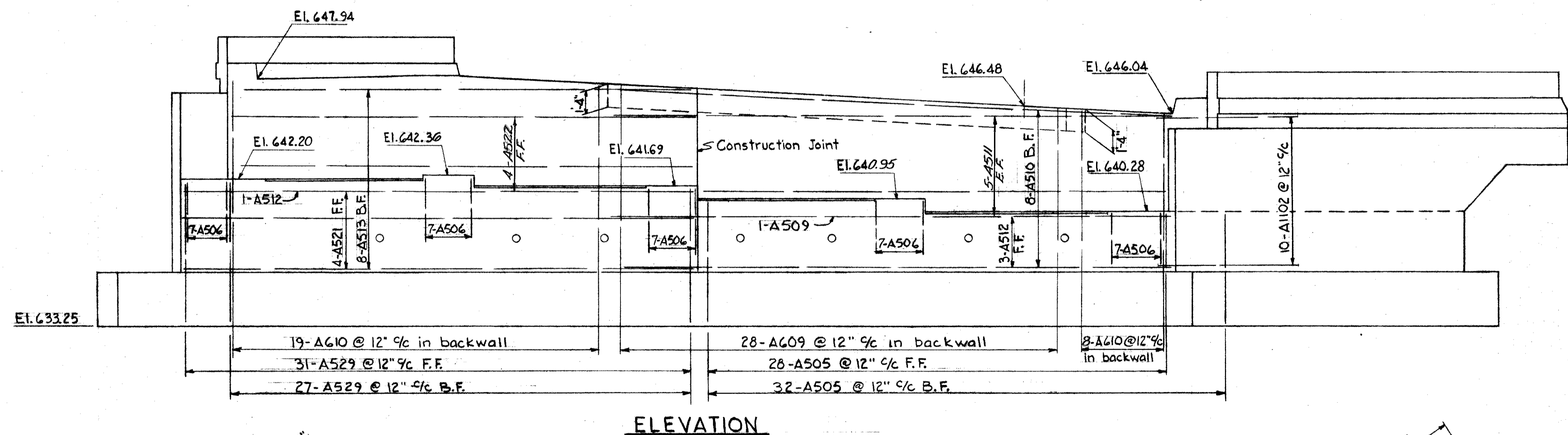
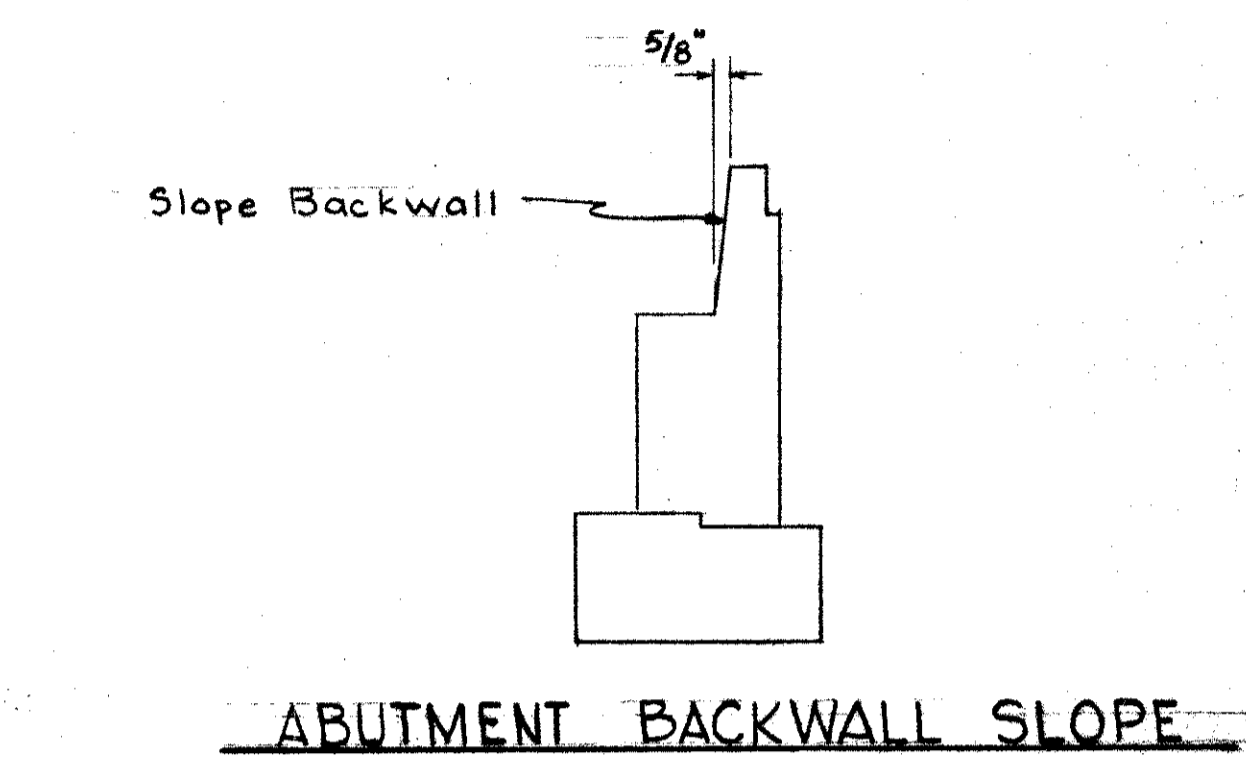


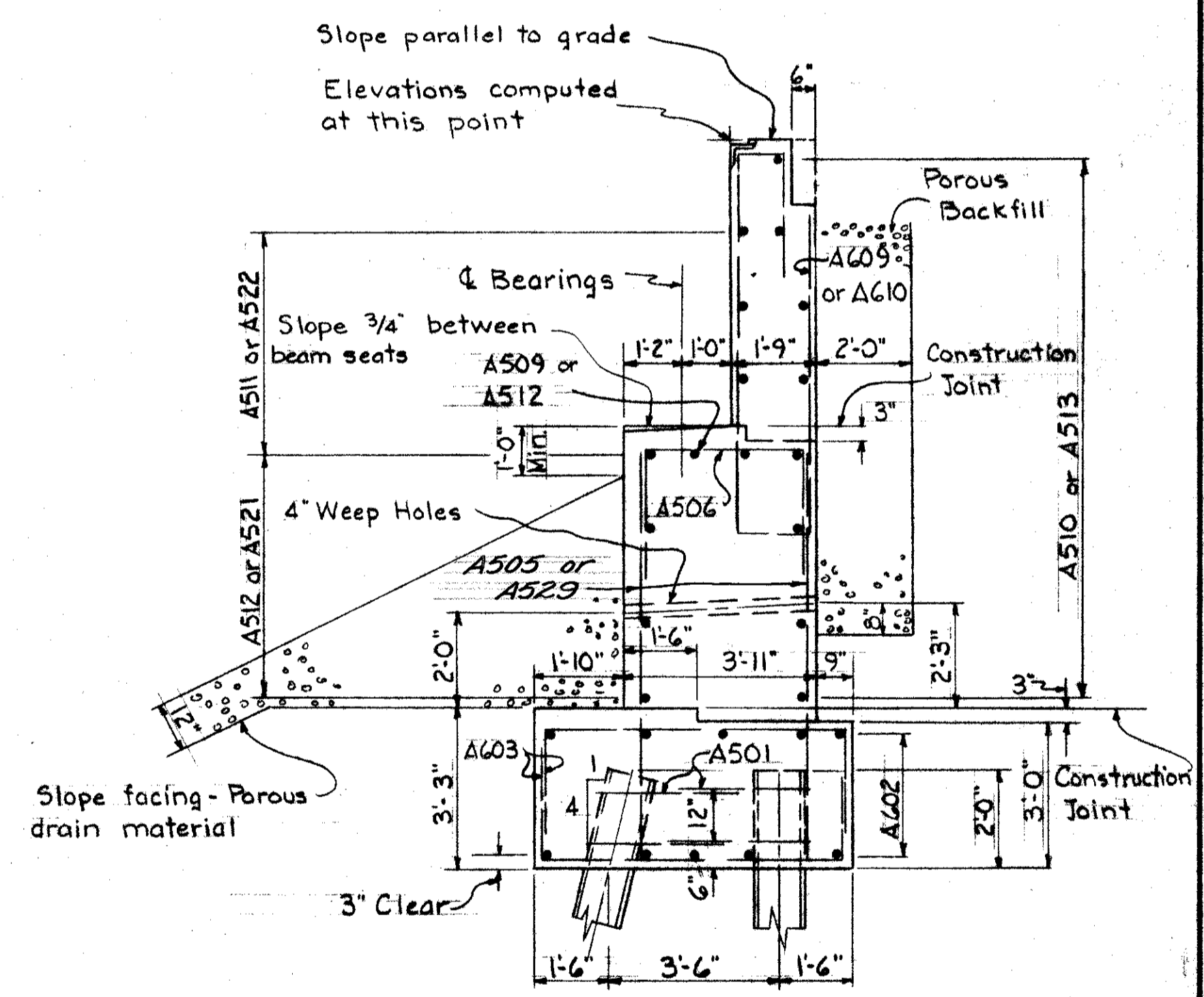
LAKE COUNTY
SEC. LAK-2-10.35



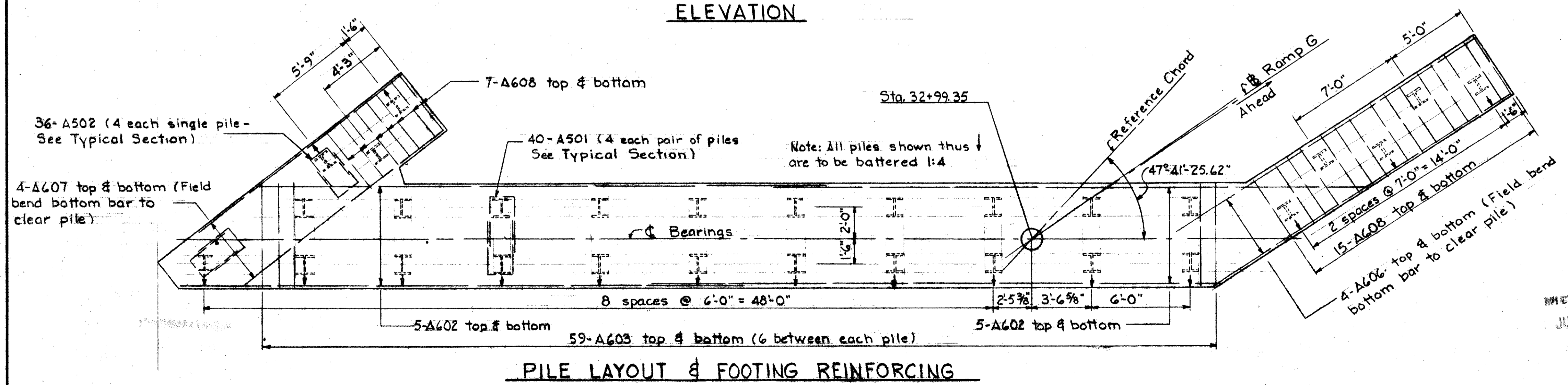
PLAN-ABUTMENT NO. 2



ELEVATION



TYPICAL ABUTMENT SECTION



PILE LAYOUT & FOOTING REINFORCING

SEC L-33						
PREPARED BY CAPITOL ENGINEERING ASSOCIATES, DILLSBURG, PA. FOR						
STATE OF OHIO DEPARTMENT OF HIGHWAYS DIVISION OF DESIGN AND CONSTRUCTION BUREAU OF BRIDGES						
ABUTMENT 2 BRIDGE NO. LAK-2-1350 RELOC. S. R. 2 UNDER S. R. 44 - RAMP G LAKE COUNTY						
STA. 613 + 25.24						
DESIGNED	DRAWN	TRACED	CHECKED	REVISED	DATE	REVISED
C.L.S.	C.L.S.					3-31-60

MICROFILMED
JUL 1 1985