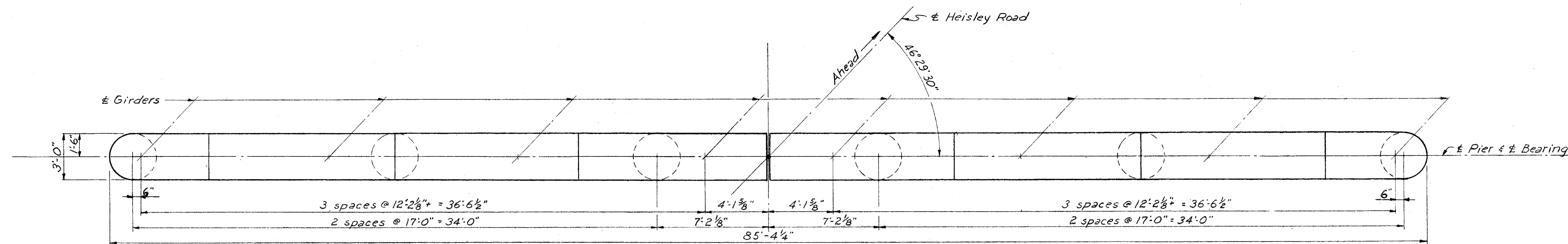


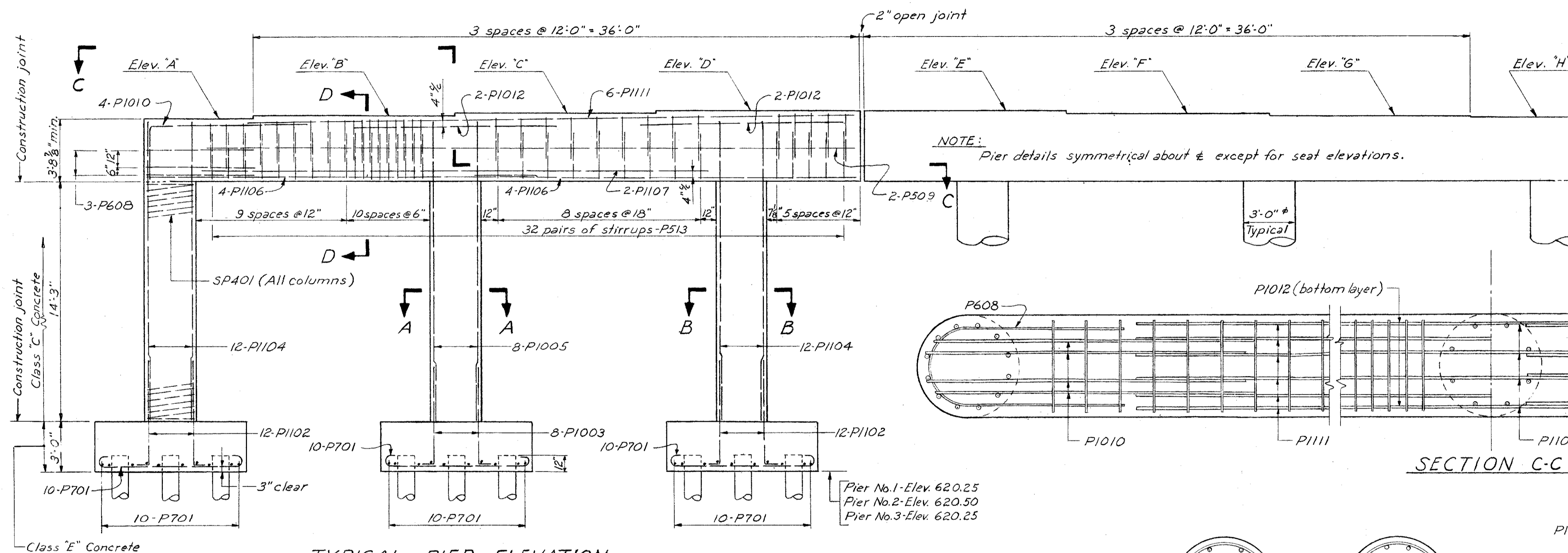
LAKE COUNTY
SEC. LAK - 2-10.35

NOTES

- PILES shall be driven to a minimum bearing capacity of 30 tons per pile for the piers.
- Special care shall be taken in placing reinforcing steel in the bridge seat so that it will not interfere with the drilling of anchor bolt holes.

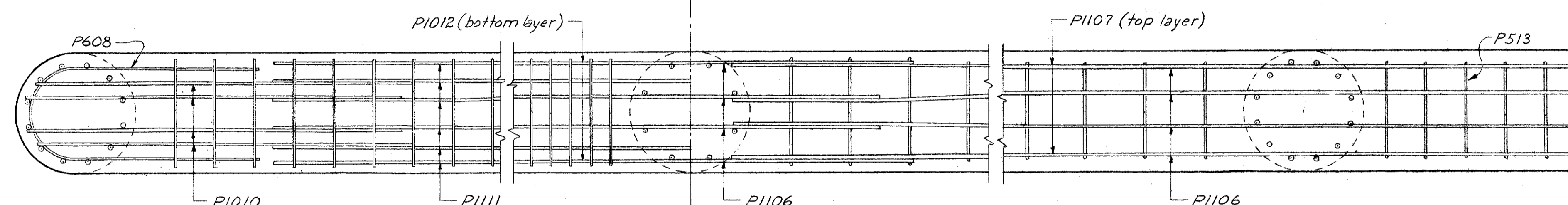


TYPICAL PIER CAP PLAN

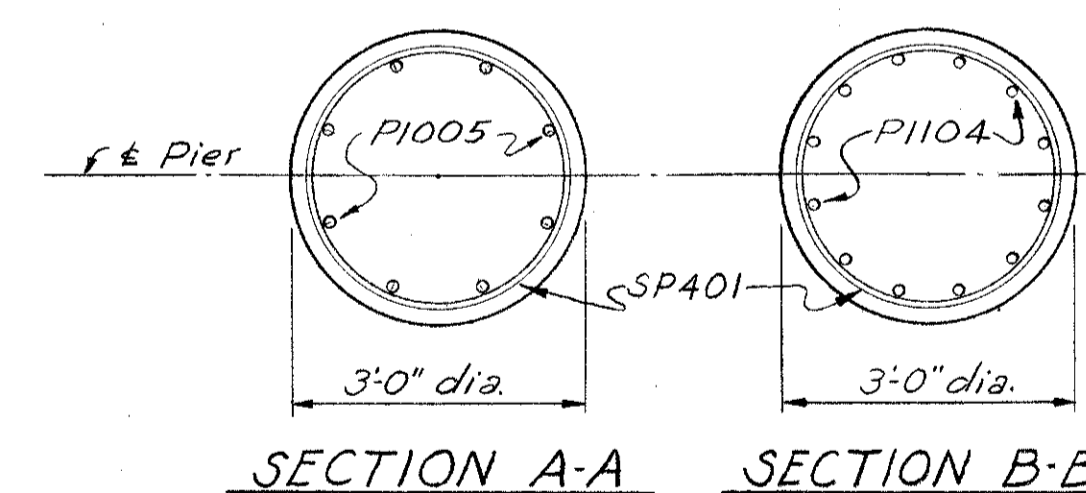


TYPICAL PIER ELEVATION

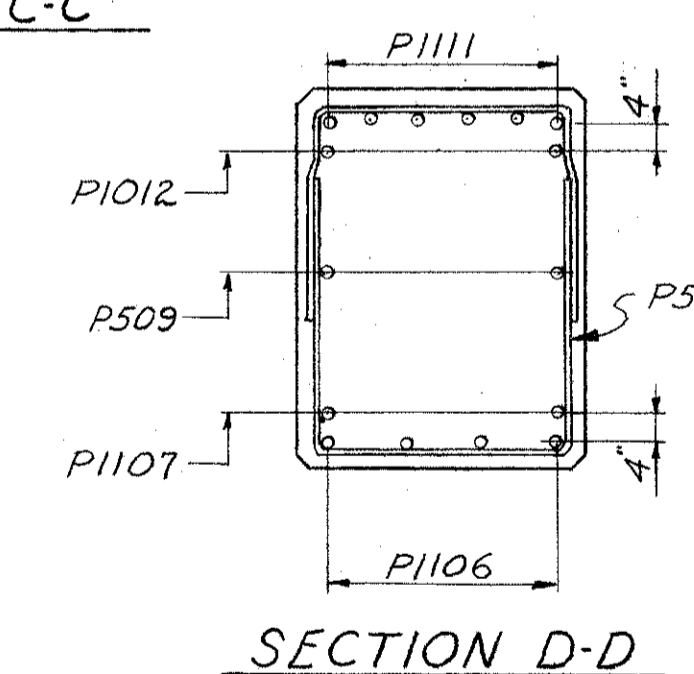
	A	B	C	D	E	F	G	H
Pier No.1	641.23	641.43	641.63	641.83	641.86	641.77	641.67	641.57
Pier No.2	641.63	641.79	641.94	642.10	642.10	641.96	641.81	641.67
Pier No.3	641.64	641.75	641.85	641.95	641.93	641.73	641.54	641.35



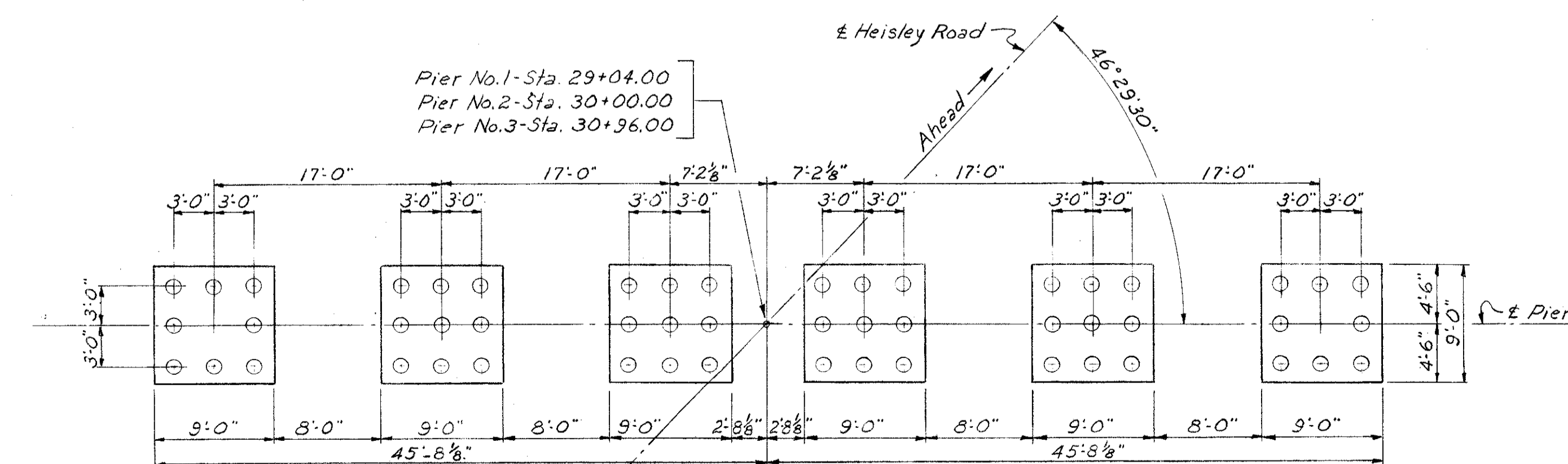
SECTION C-C



SECTION A-A SECTION B-B

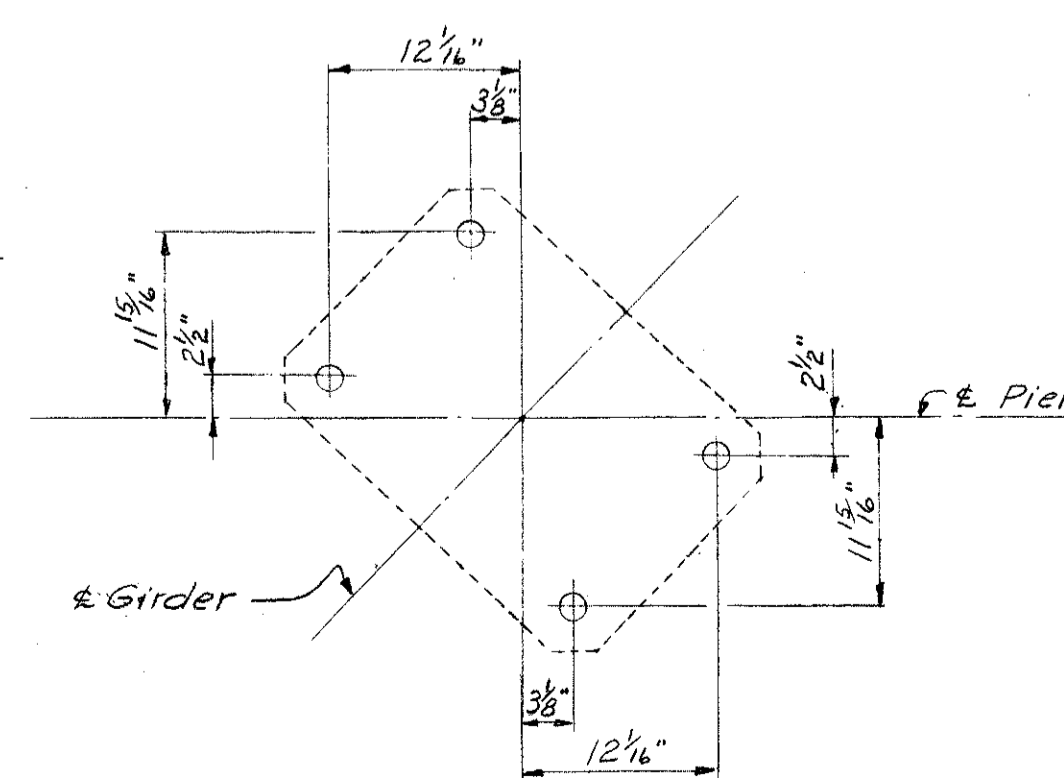


SECTION D-D



FOOTING PLAN

NOTE: All piers to have 52-12" cast-in-place reinforced concrete piles.



ANCHOR BOLT LAYOUT
PIER NO.2

MICROFILMED
JUL 1 1985

SEC. L-33

PREPARED BY
CAPITOL ENGINEERING ASSOCIATES DILLSBURG, PA.
FOR

STATE OF OHIO
DEPARTMENT OF HIGHWAYS
DIVISION OF DESIGN AND CONSTRUCTION
BUREAU OF BRIDGES

PIERS
BRIDGE NO. LAK - 2 - 1263
RELOC. S.R.2 UNDER HEISLEY RD.
LAKE COUNTY

STA. 564 + 99.00

DESIGNED	DRAWN	TRACED	CHECKED	REVISED DATE	REVISED
JJM	JJM		mm		