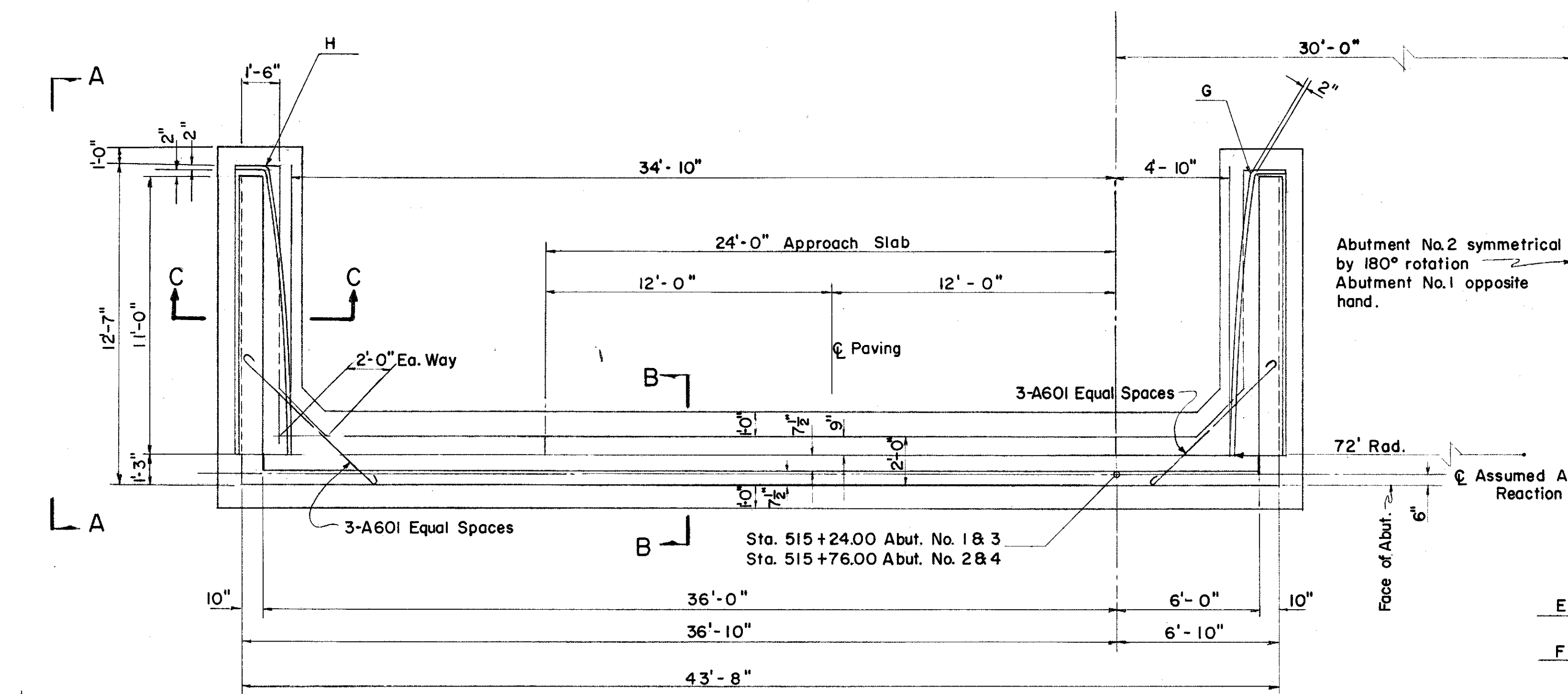
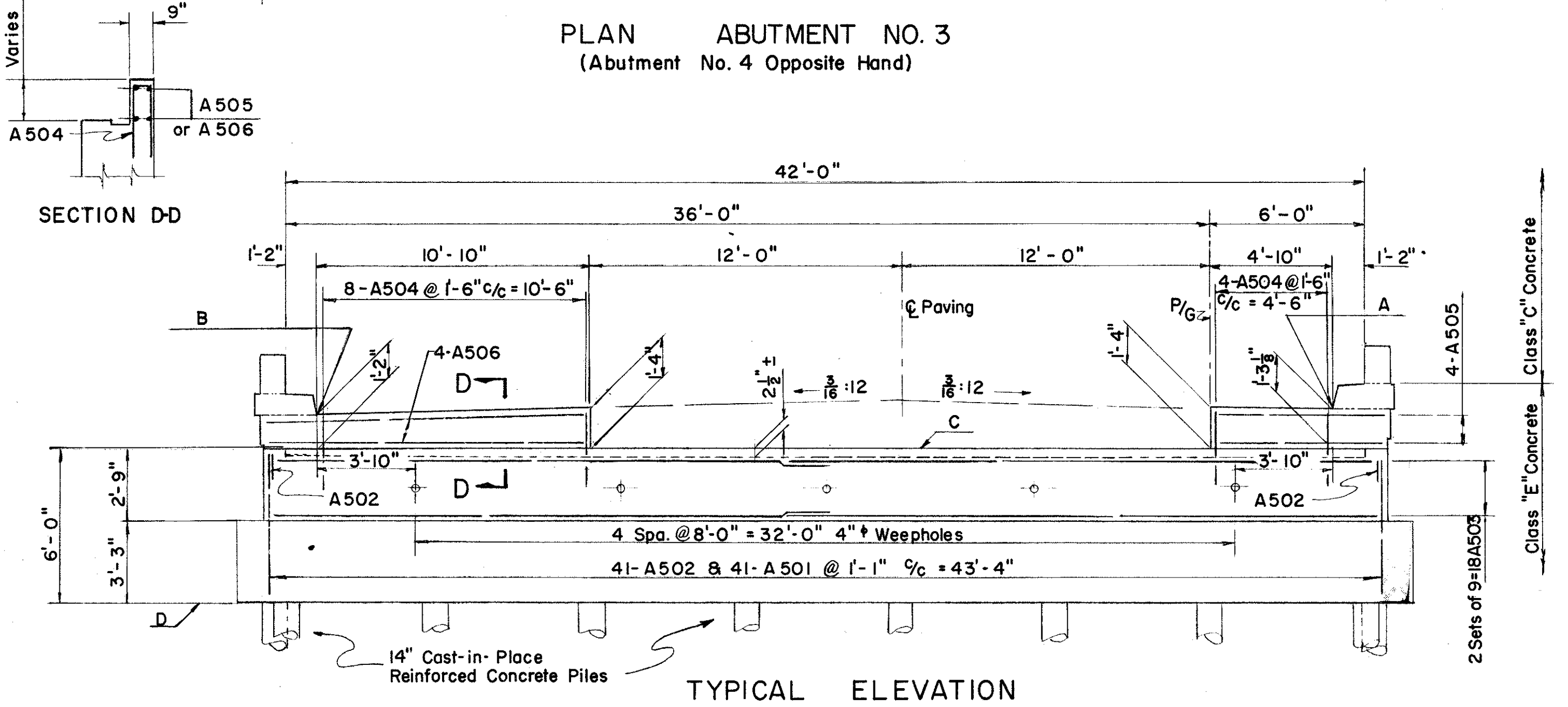


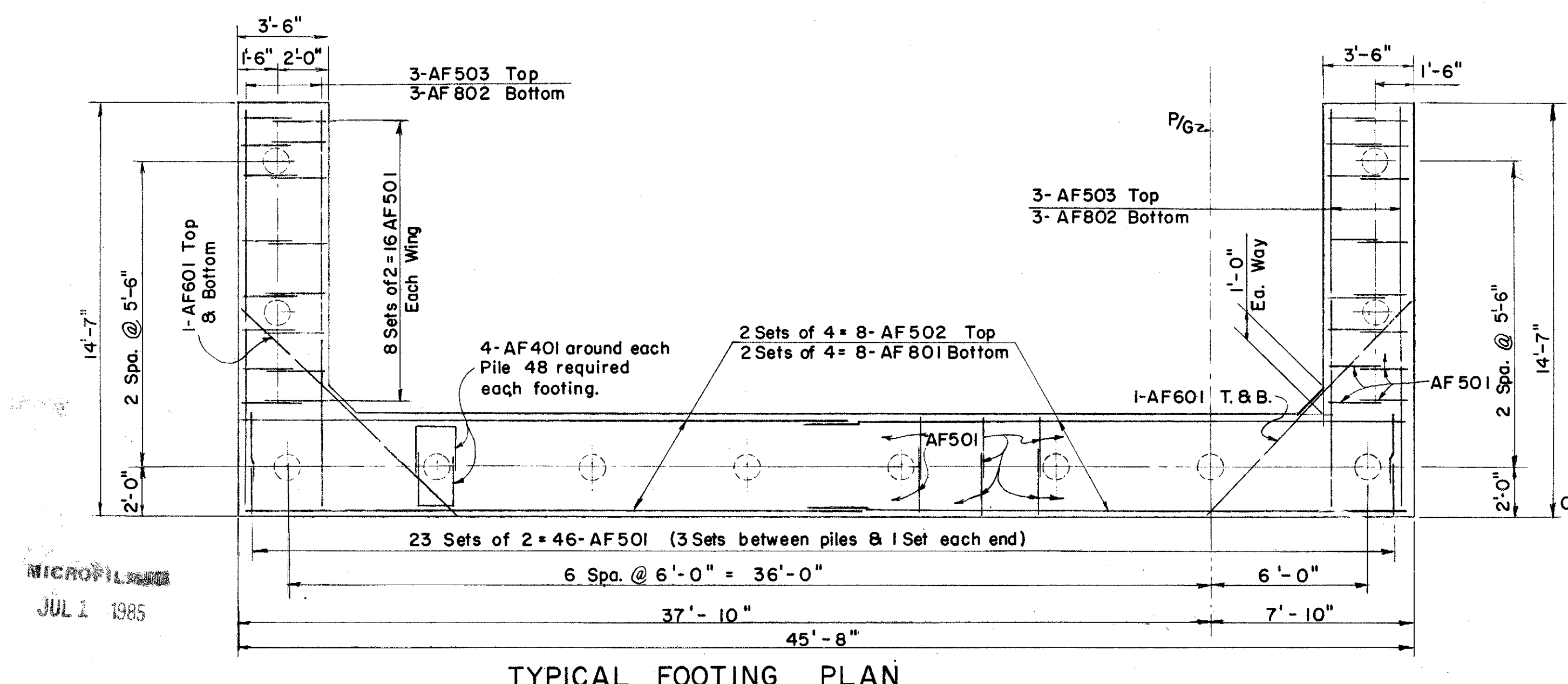
LAKE COUNTY
SEC. LAK-2-10.35



PLAN ABUTMENT NO. 3
(Abutment No. 4 Opposite Hand)



TYPICAL ELEVATION



TYPICAL FOOTING PLAN

MICROFILMED
JUL 1 1985

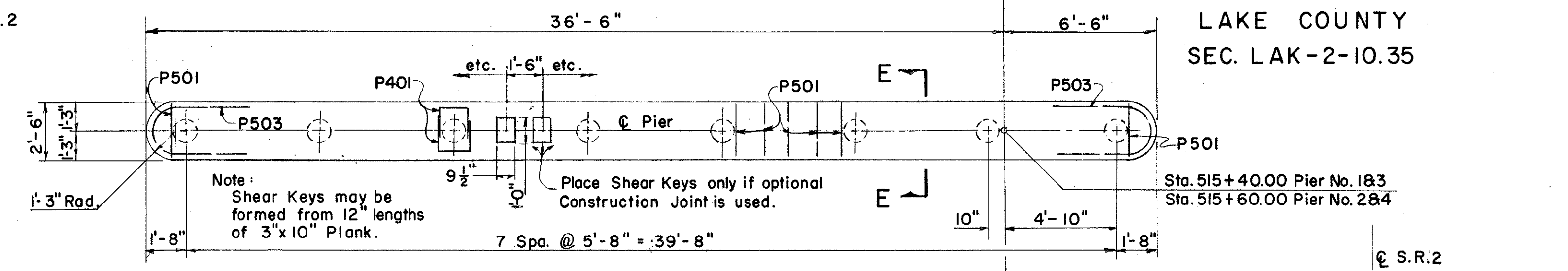
Abutment No.2 symmetrical by 180° rotation
Abutment No.1 opposite hand.

Assumed Abutment Reaction

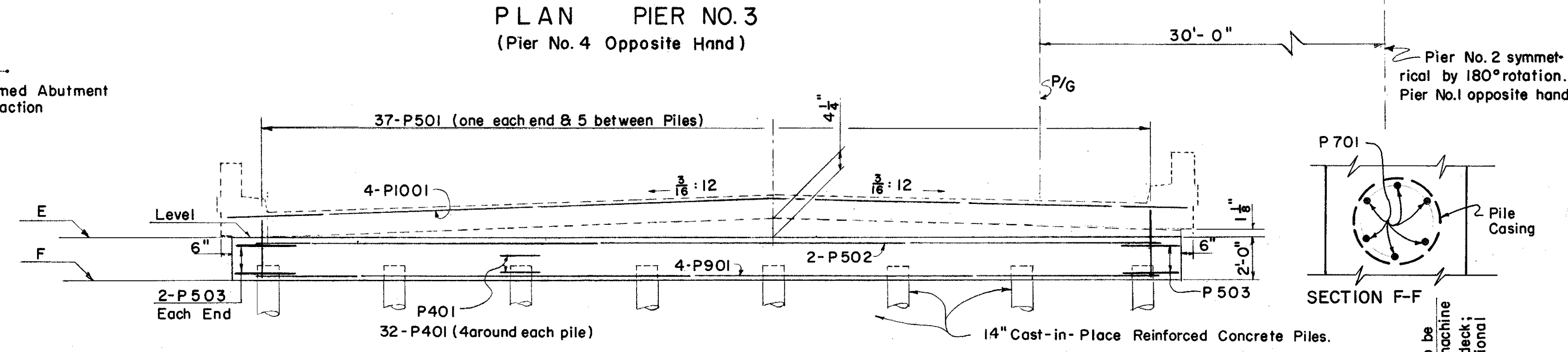
Face of Abut.

Class "E" Concrete Class "C" Concrete

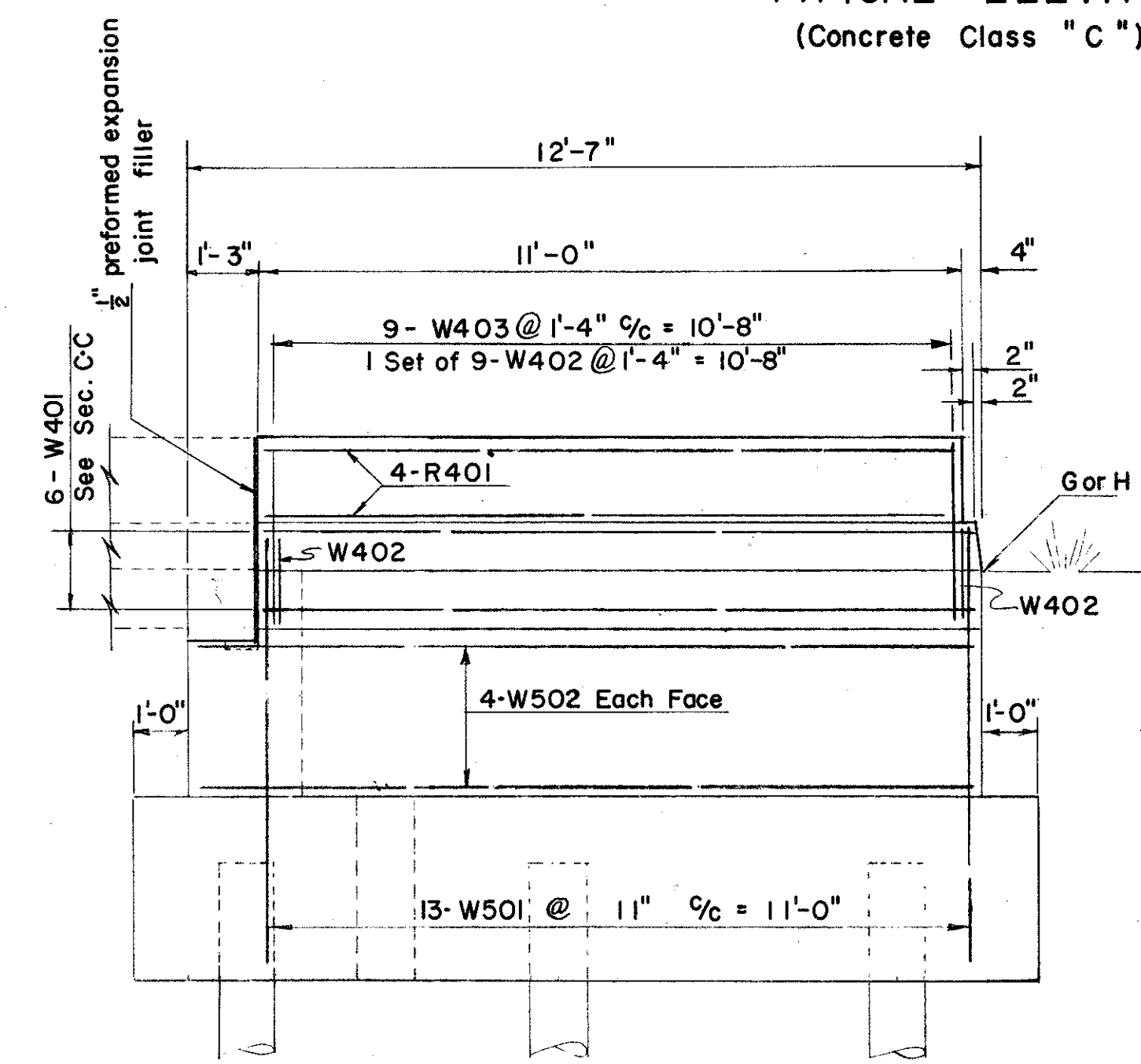
Crushed Aggregate Slope Protection Item I-10



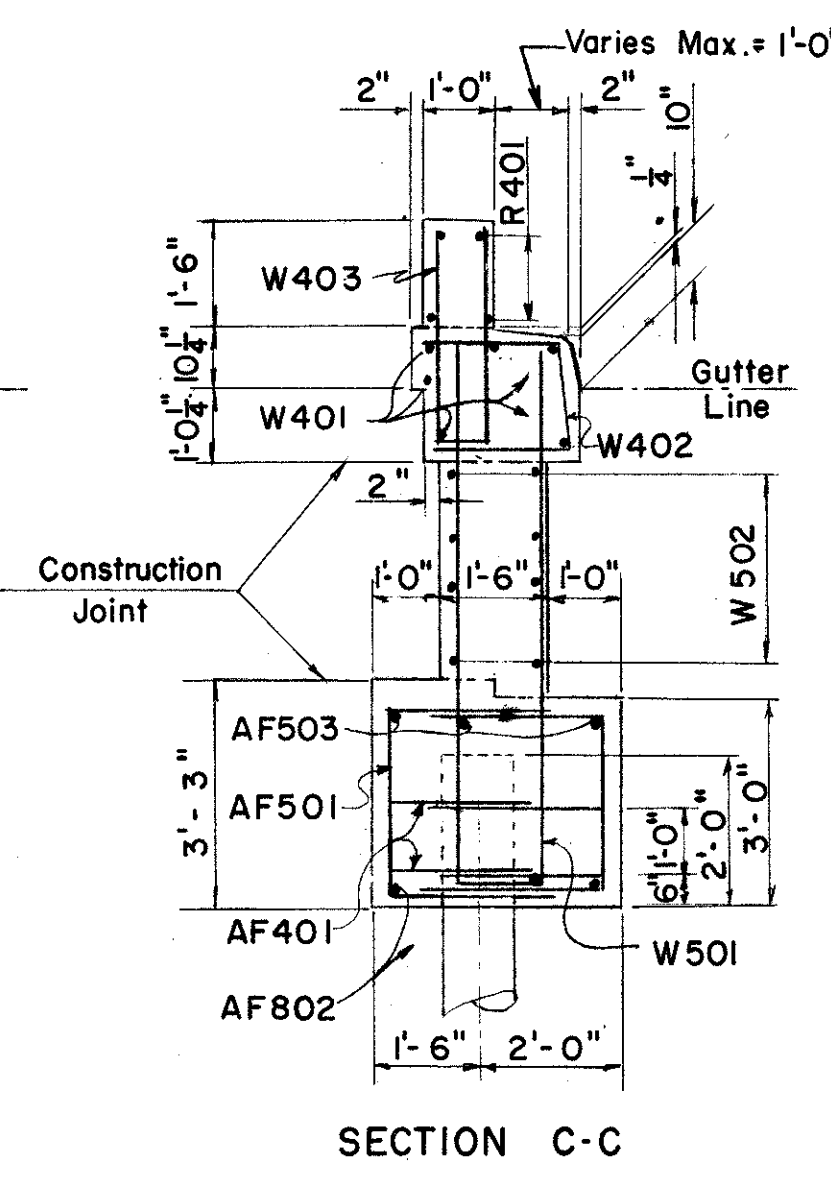
PLAN PIER NO. 3
(Pier No. 4 Opposite Hand)



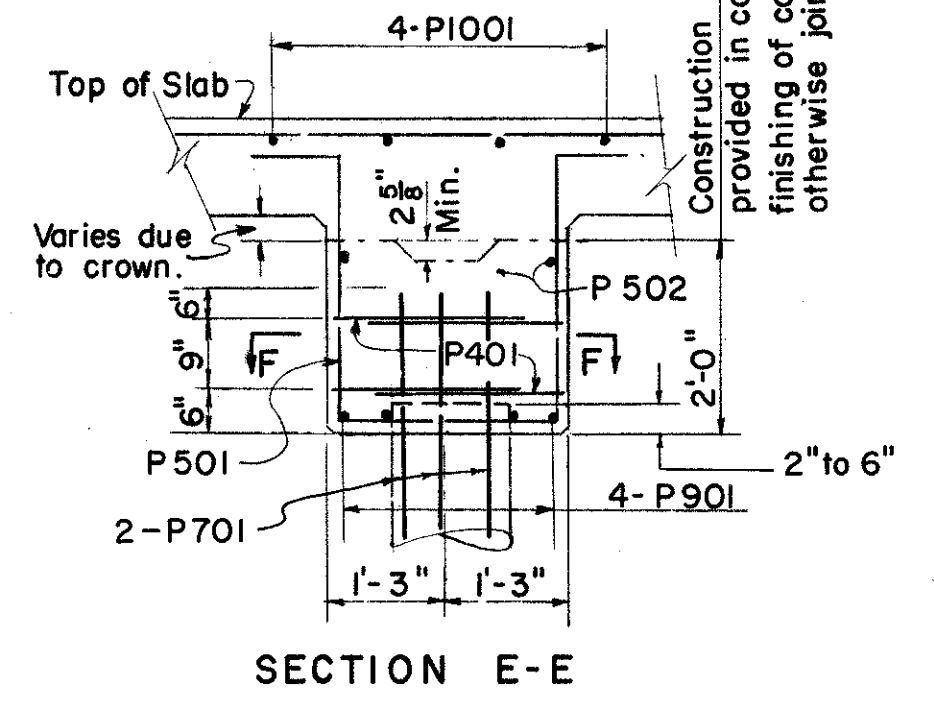
TYPICAL ELEVATION
(Concrete Class "C")



ELEVATION A-A

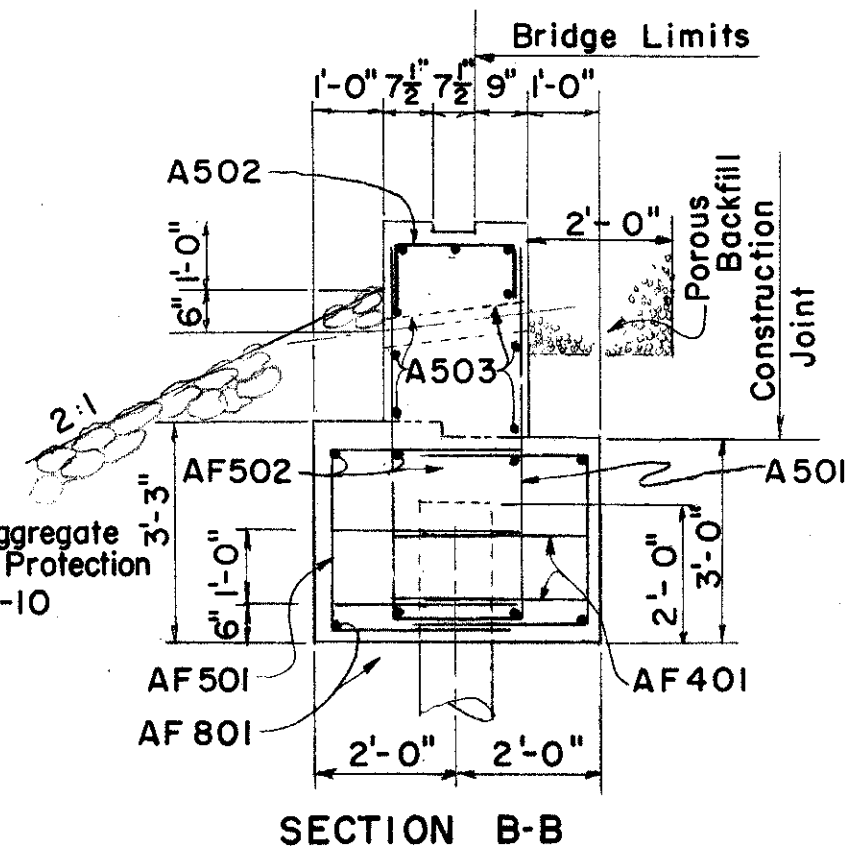


SECTION C-C



SECTION E-E

NOTE:
All piles shall be driven to a minimum bearing capacity of 25 ton per pile. Actual design load is 22 ton per pile.
All reinforcing steel shall have a minimum of 3" of cover in the footing and 2" elsewhere.
Pier Cap concrete is included in the deck slab quantity.



SECTION B-B

ABUTMENTS	ELEVATION						
	A	B	C	D	PIER	F	
1 & 3	628.77	628.68	627.51	620.50	1 & 3	627.61	625.61
2 & 4	628.64	628.55	627.39	620.40	2 & 4	627.56	625.56
End of Wings	G	H					
1 & 3	628.80	628.71					
2 & 4	628.61	628.52					

SEC. L-33

PREPARED BY
CAPITOL ENGINEERING ASSOCIATES, DILLSBURG, PA.
FOR
STATE OF OHIO
DEPARTMENT OF HIGHWAYS
DIVISION OF DESIGN AND CONSTRUCTION
BUREAU OF BRIDGES

ABUTMENTS & PIERS
BRIDGE NO. LAK.-2-1165 E & W
S.R.2 OVER HEISLEY CREEK
LAKE COUNTY
STA. 515 + 50.00

DESIGNED	DRAWN	TRACED	CHECKED	REVISED DATE	REVISED
			JEB		