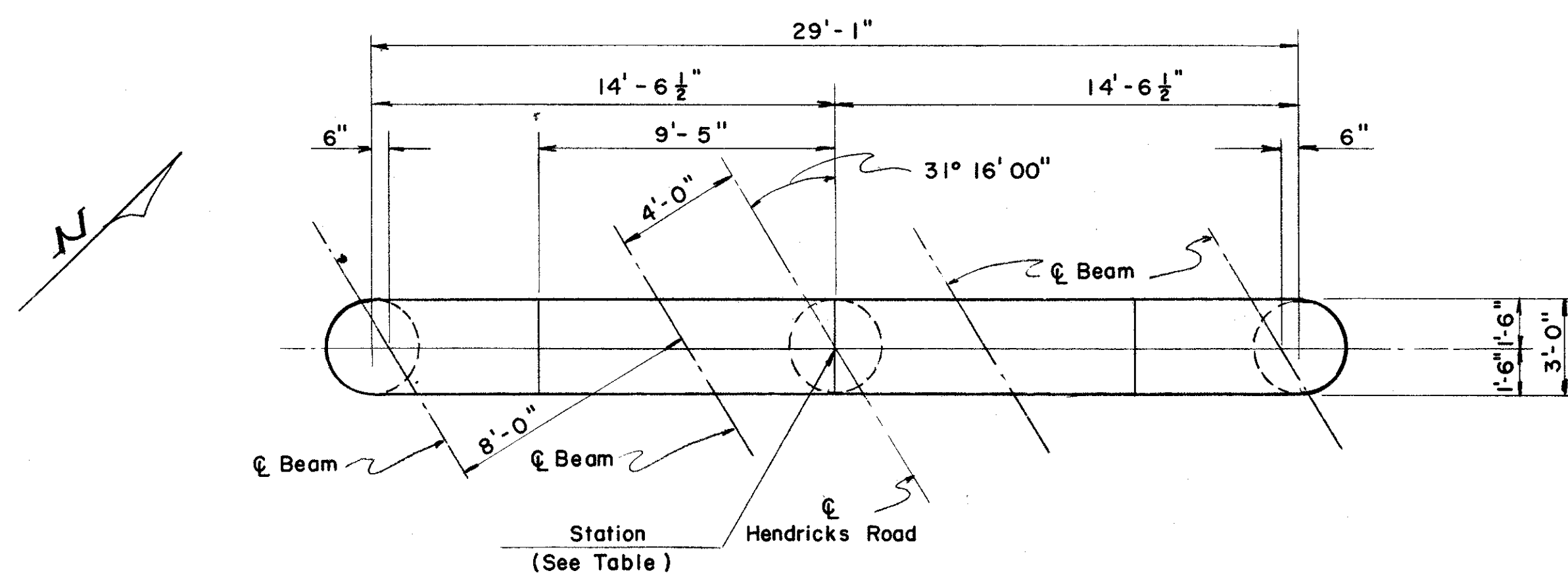
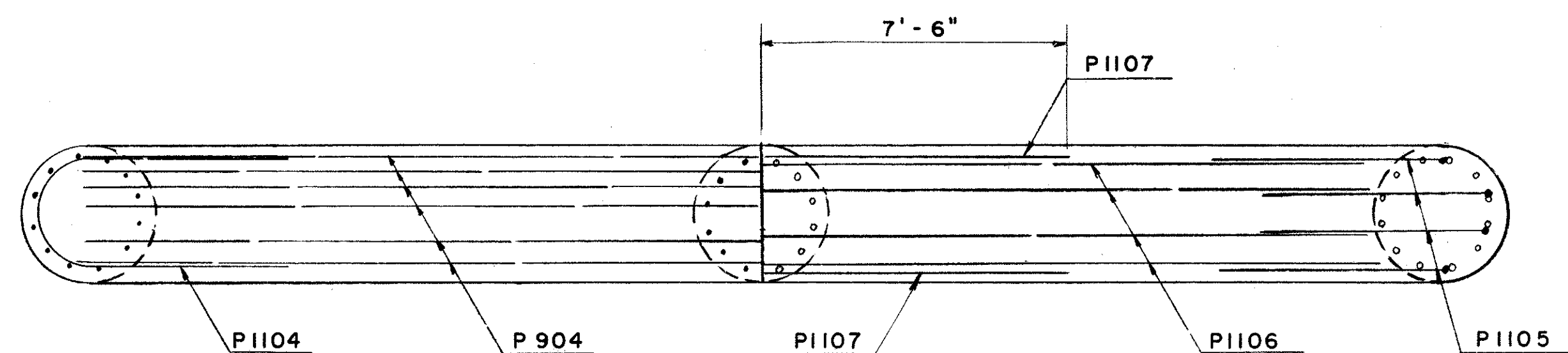


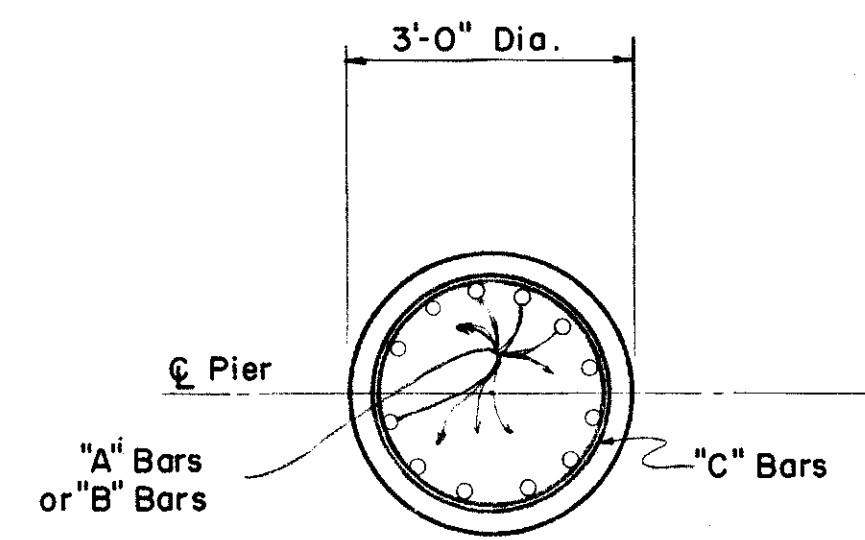
LAKE COUNTY
SEC. LAK-2-10.35



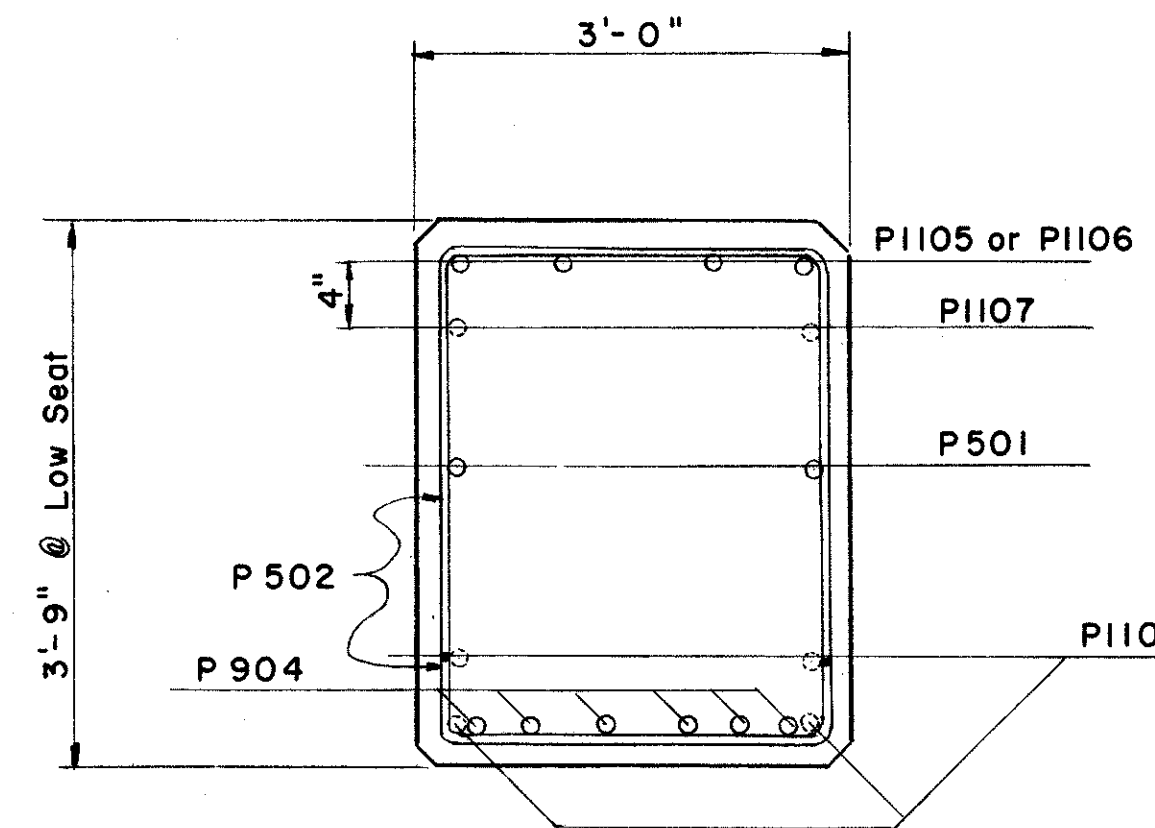
CAP PLAN
(Typical all Piers)



SECTION C-C



SECTION A-A



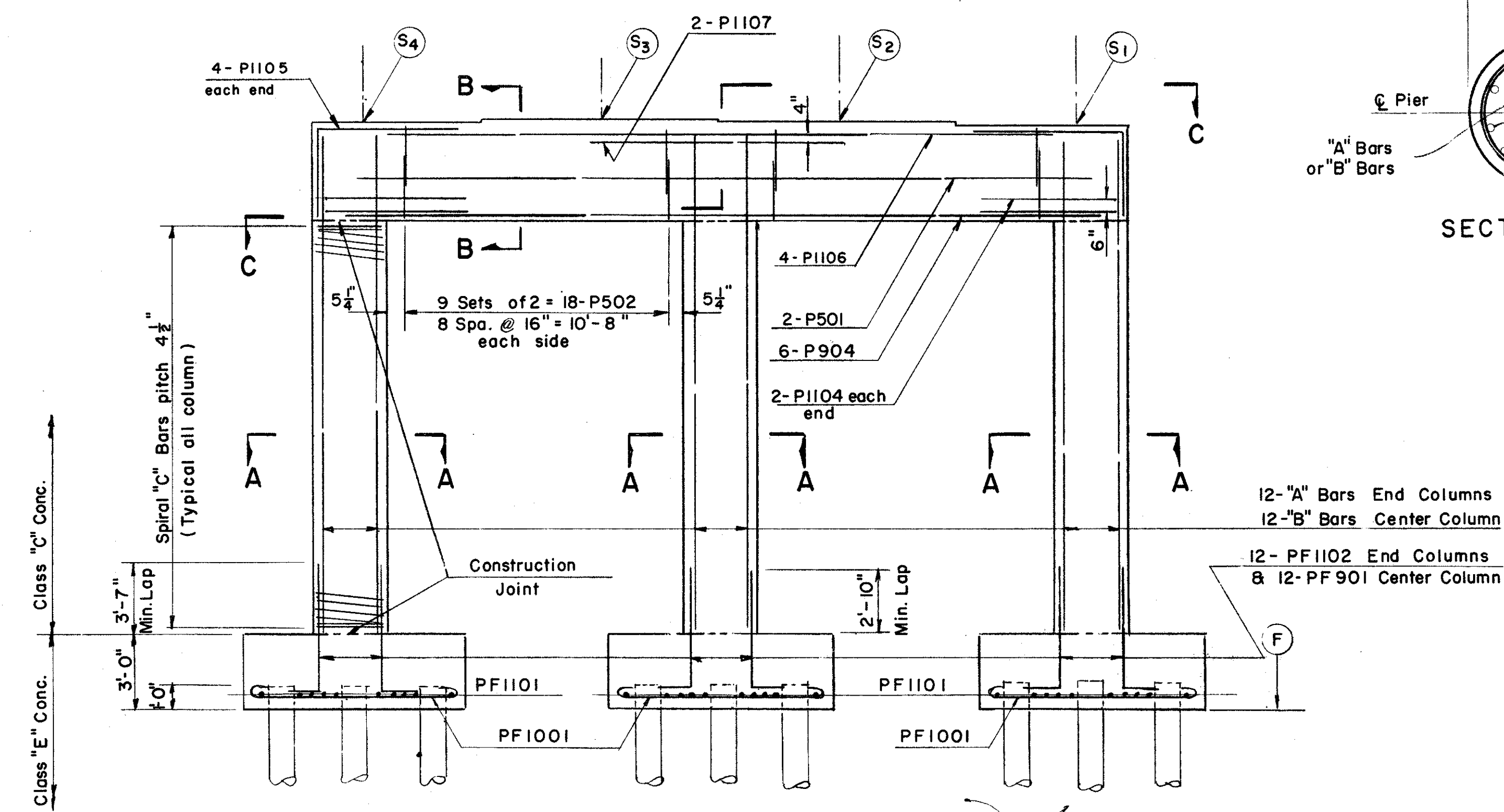
SECTION B-B

NOTES:

Piles shall be driven to a minimum bearing capacity of 35 ton per pile. The design load is 35 ton per pile.

Special Care shall be taken in placing the reinforcing steel in the top of the cap on Pier No. 2 so it does not interfere with the drilling of Anchor Bolt holes.

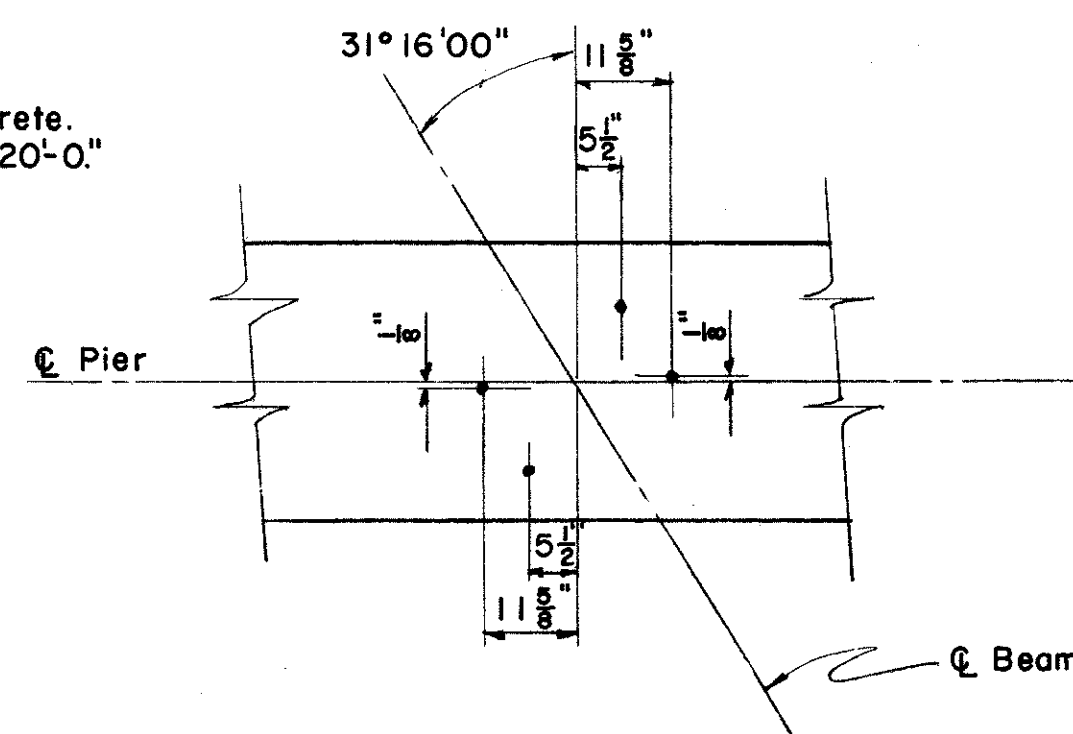
Reinforcing Steel shall have a minimum of 3" of cover in the bottom of the footing and 2" elsewhere



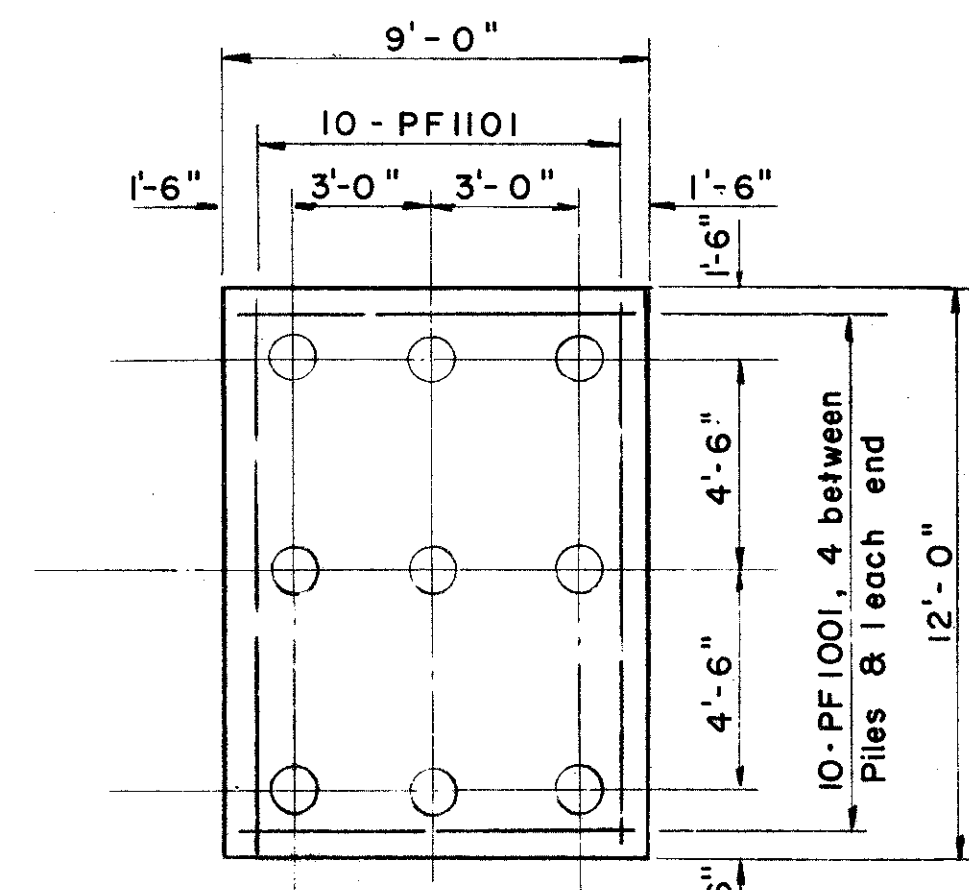
PIER ELEVATION
(Typical all Piers)

PIER	STATION	ELEVATION					BARS		
		S ₁	S ₂	S ₃	S ₄	F	A	B	C
1	29+18.50	646.40	646.57	646.62	646.53	625.20	P1101	P901	SP401
2	30+00.00	646.73	647.86	647.86	646.73	625.30	P1102	P902	SP402
3	30+81.50	646.53	646.62	646.57	646.40	625.40	P1103	P903	SP403

All piles shall be 12" butt dia.
Cast-in-Place Reinforced Concrete.
Estimated average Pay Length 20'-0"



**ANCHOR BOLT LAYOUT
FOR PIER NO. 2**



FOOTING PLAN
(Typical all Column Footings)

MICROFILMED
JUL 1 1985

SEC. L-33

PREPARED BY
CAPITOL ENGINEERING ASSOCIATES, DILLSBURG, PA.
FOR

STATE OF OHIO
DEPARTMENT OF HIGHWAYS
DIVISION OF DESIGN AND CONSTRUCTION
BUREAU OF BRIDGES

PIER
BRIDGE NO. LAK.-2-1140
S.R.2 UNDER HENDRICKS ROAD
LAKE COUNTY

STA. 499+91.55

DESIGNED	DRAWN	TRACED	CHECKED	REVISED DATE	REVISED
ORT	ORT				