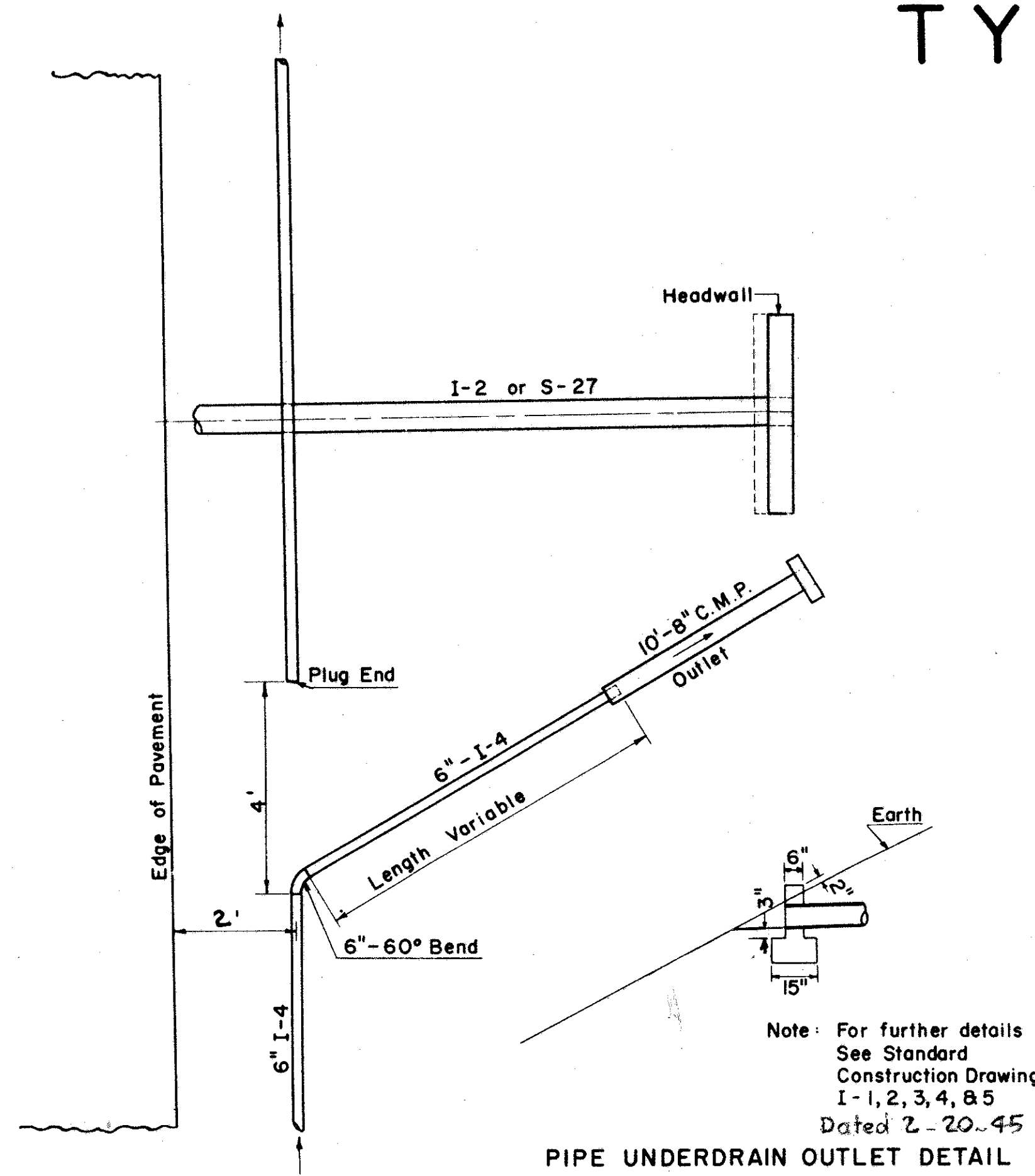


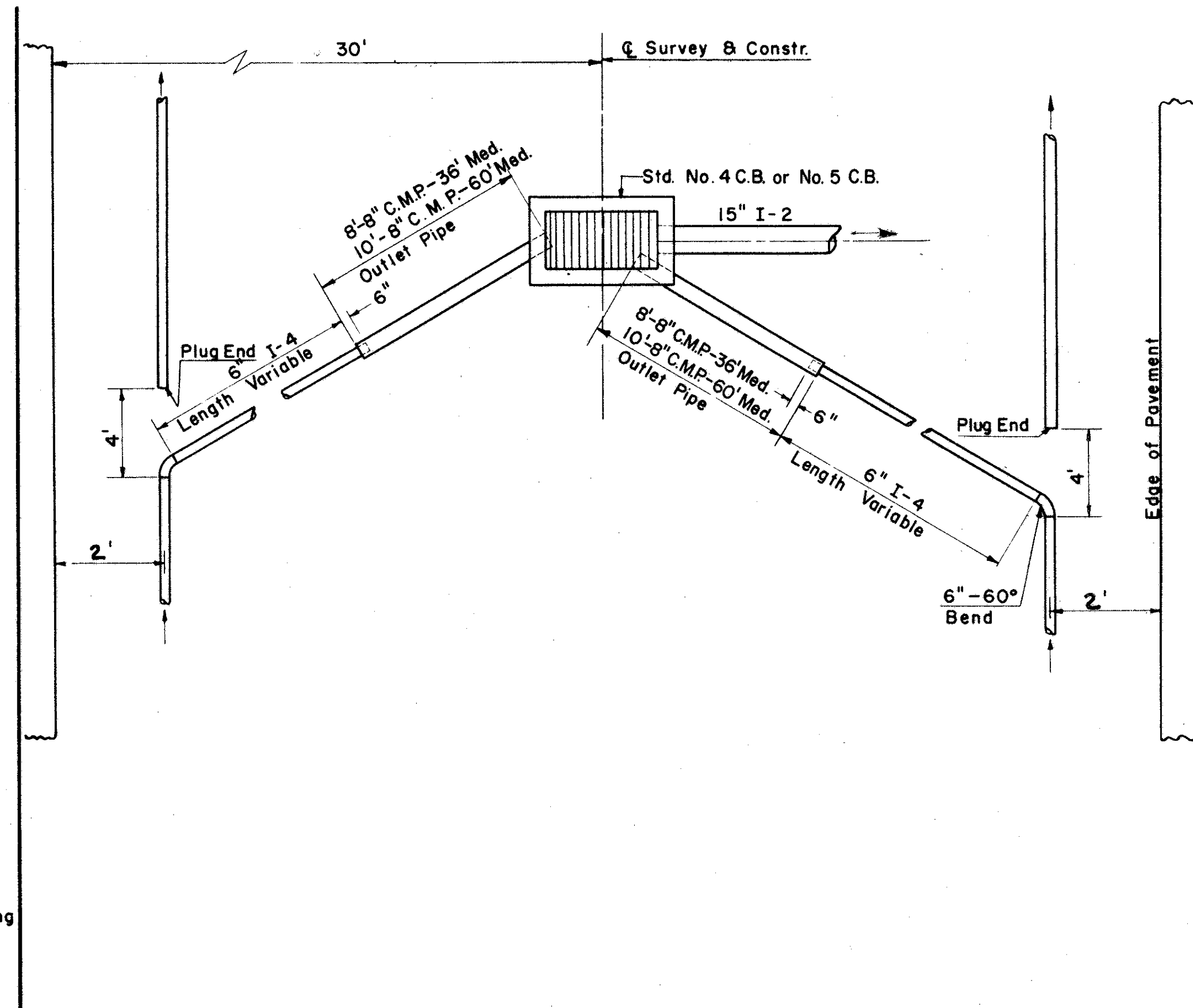
# TYPICAL DETAILS I-4 & I-2

FED. RD. DIVISION	STATE	PROJECT	316
2	OHIO		379

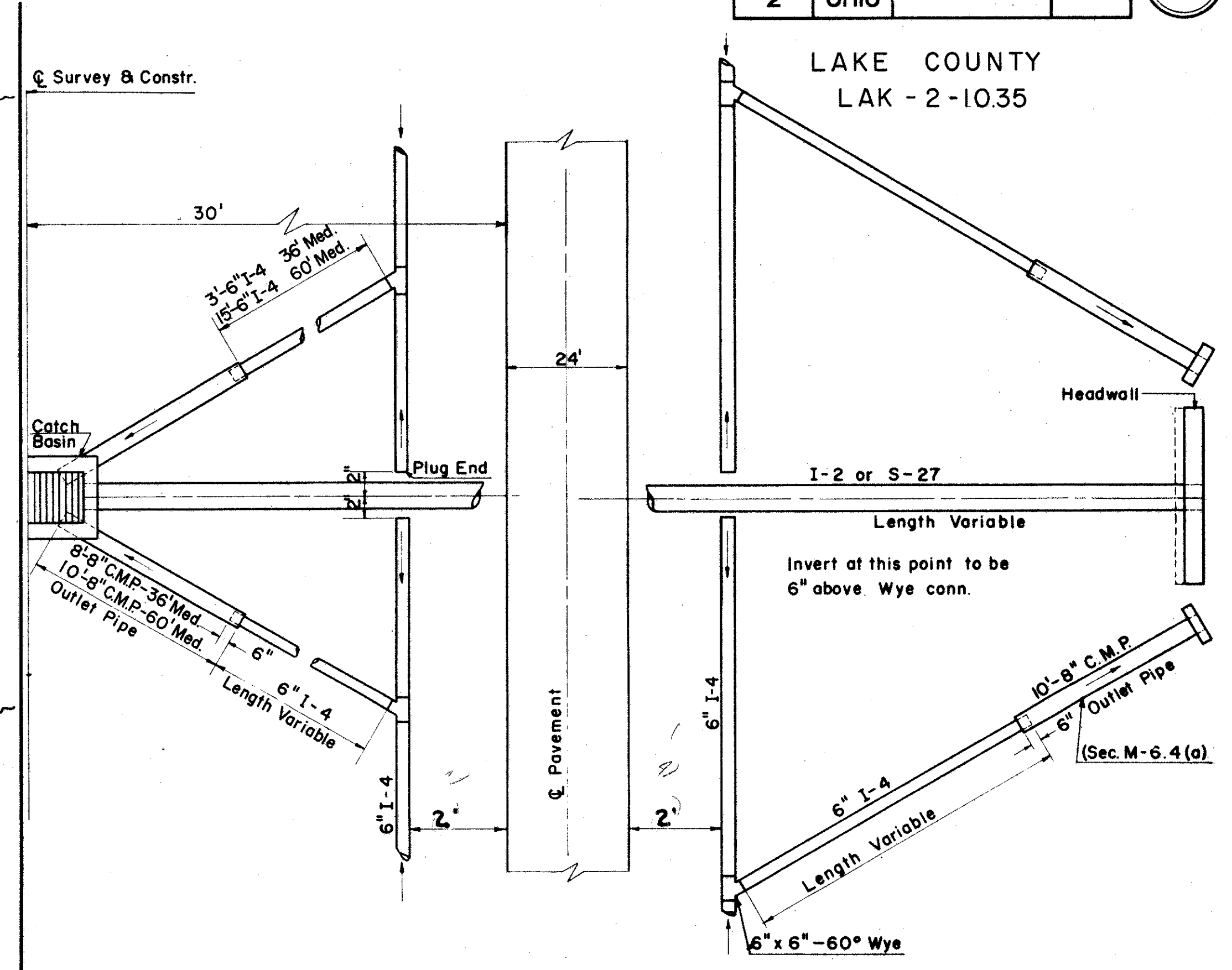
LAKE COUNTY  
LAK - 2-1035



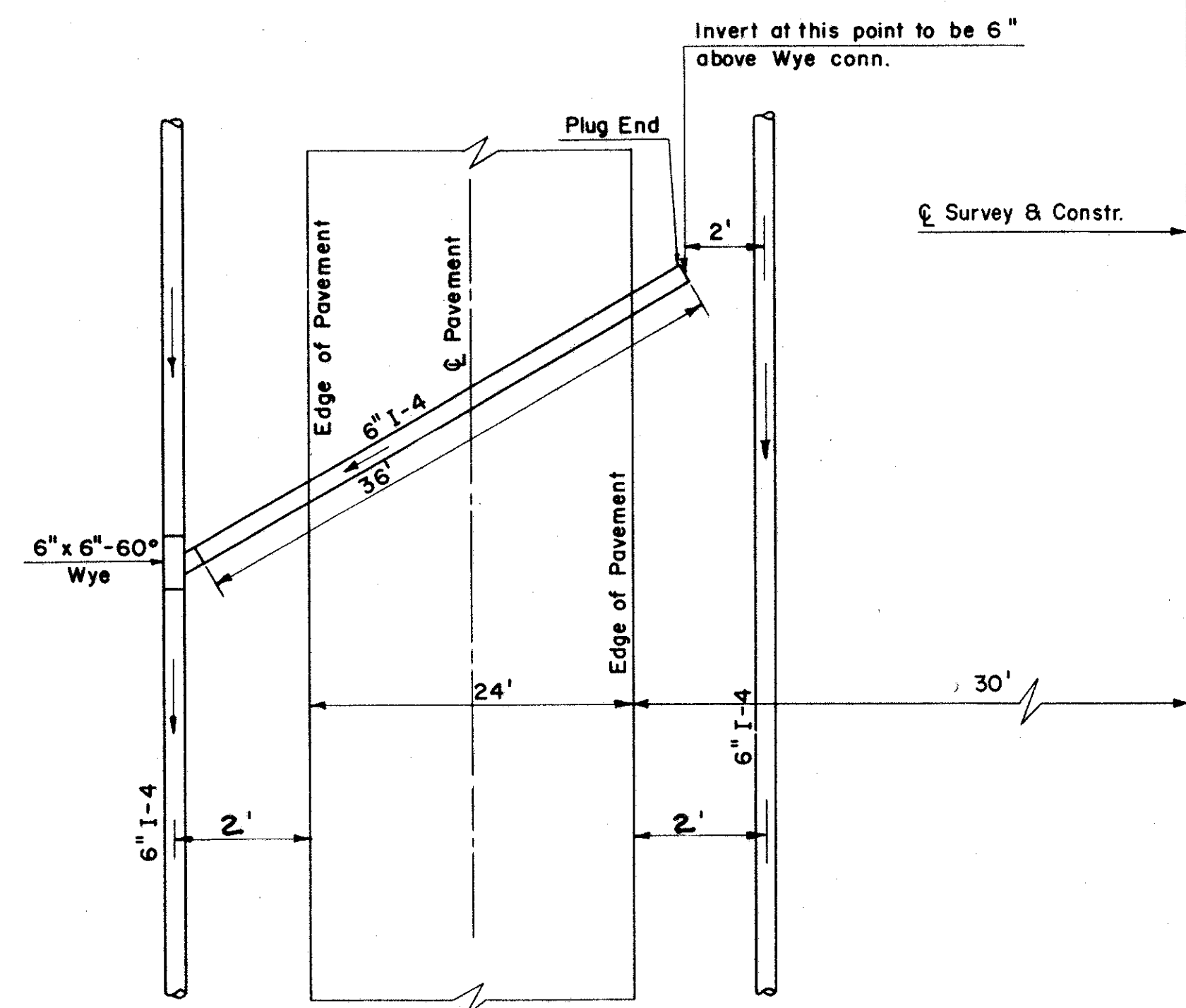
UNDERDRAIN OUTLET DETAIL A



UNDERDRAIN OUTLET DETAIL B

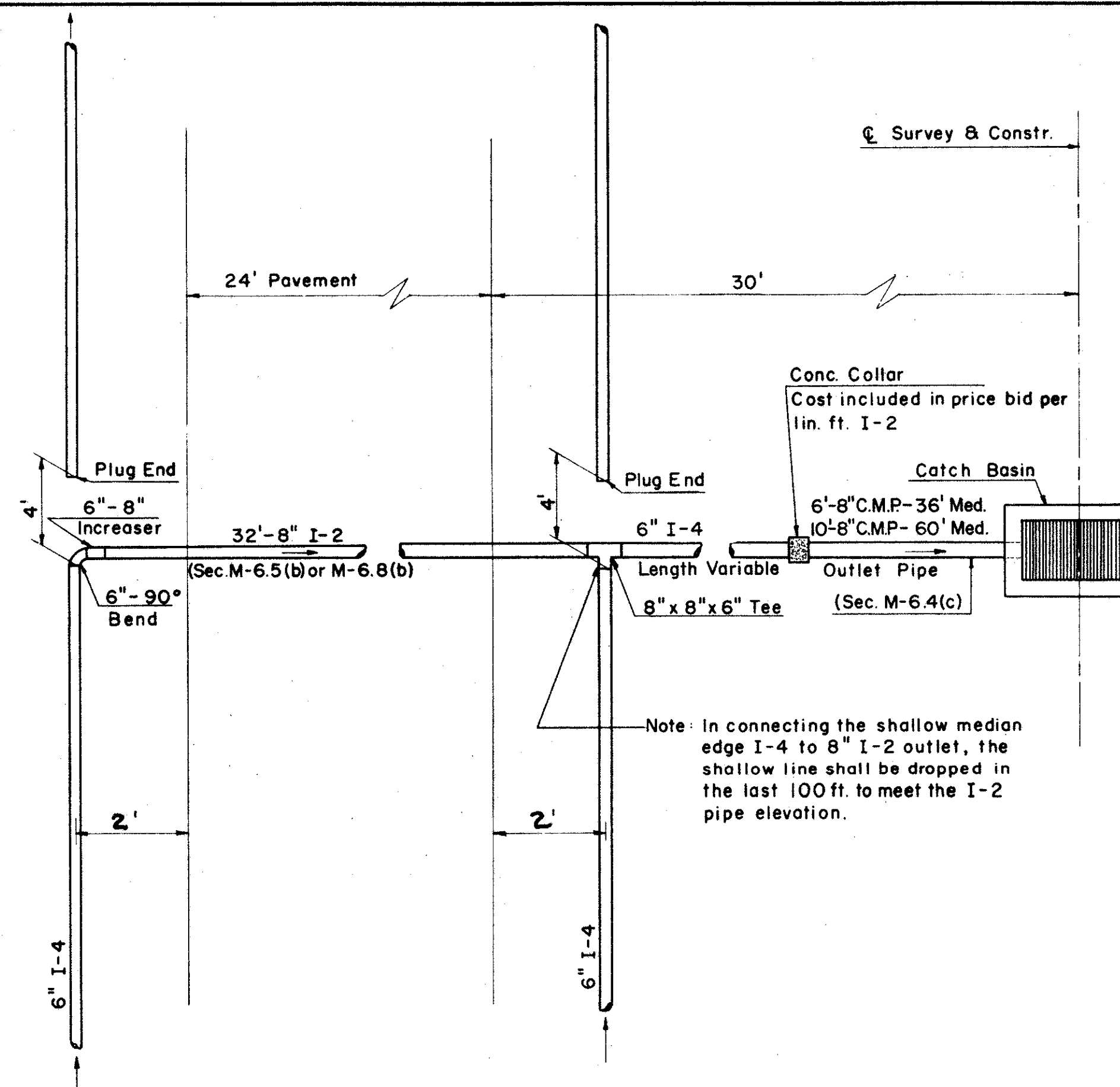


UNDERDRAIN OUTLET DETAIL C

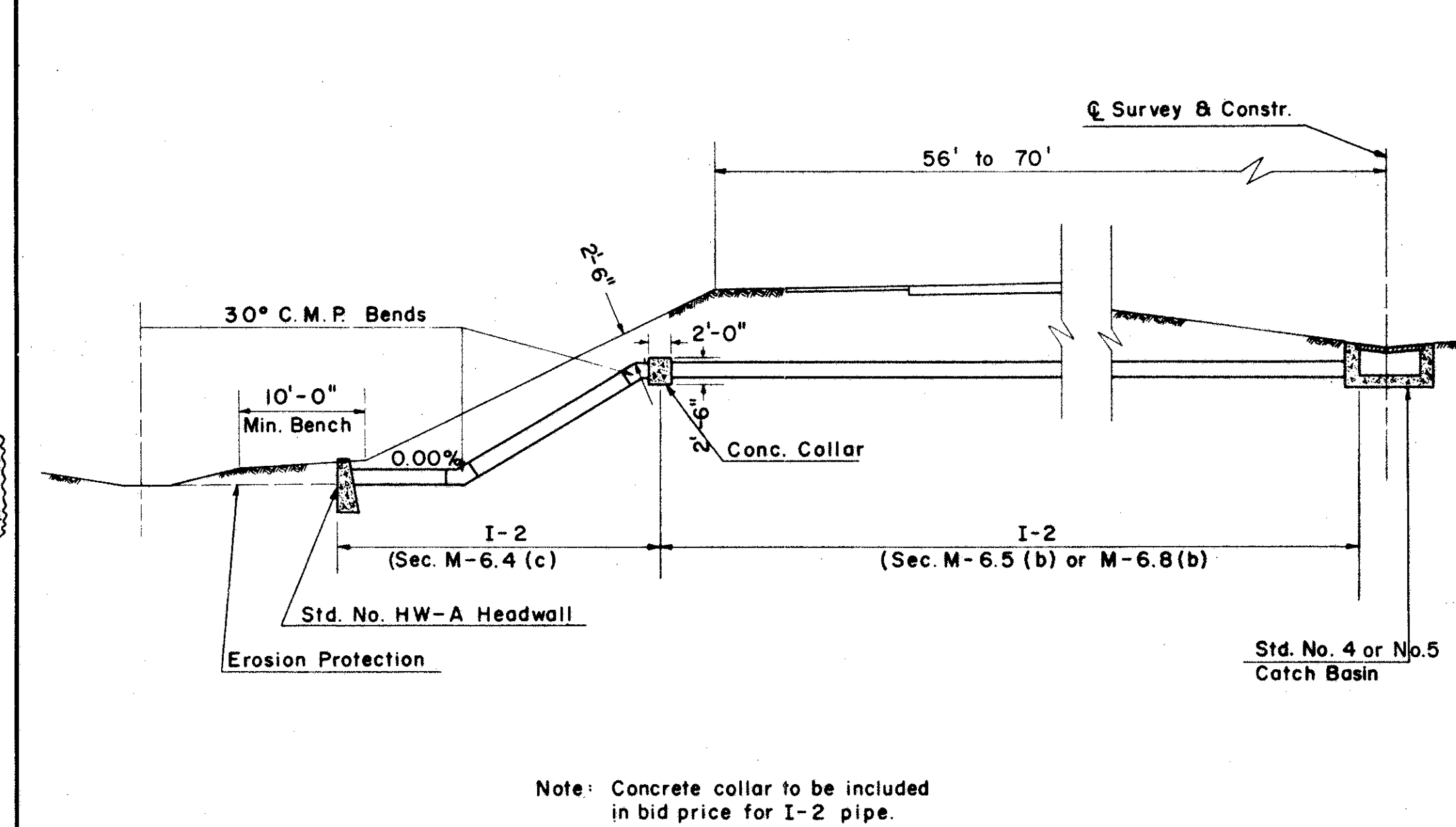


DETAIL I-4 CROSSOVER

CUT TO FILL SECTION



UNDERDRAIN OUTLET DETAIL E



MEDIAN OUTLET DETAIL IN HIGH FILL

Note: In connecting the shallow median edge I-4 to 8" I-2 outlet, the shallow line shall be dropped in the last 100 ft. to meet the I-2 pipe elevation.

Note: Concrete collar to be included in bid price for I-2 pipe.