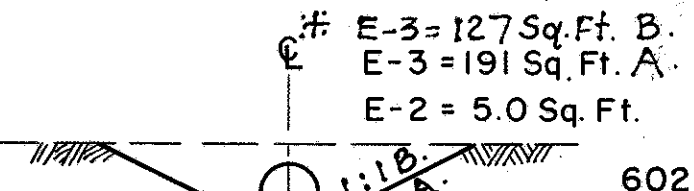
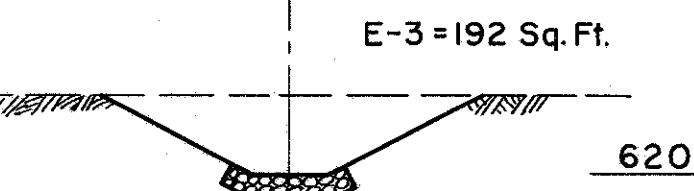
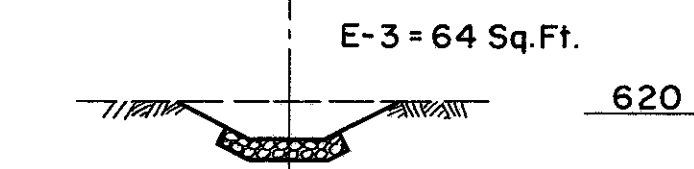
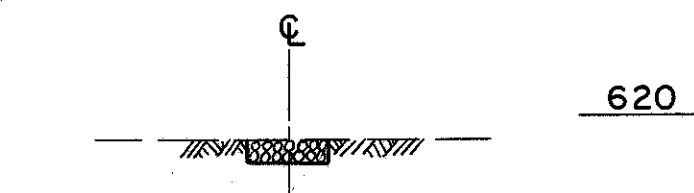
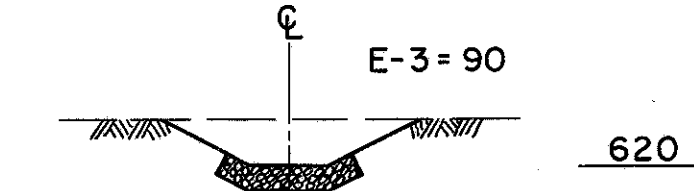
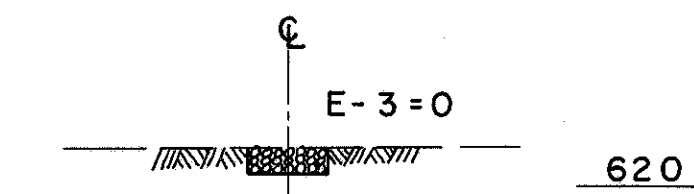
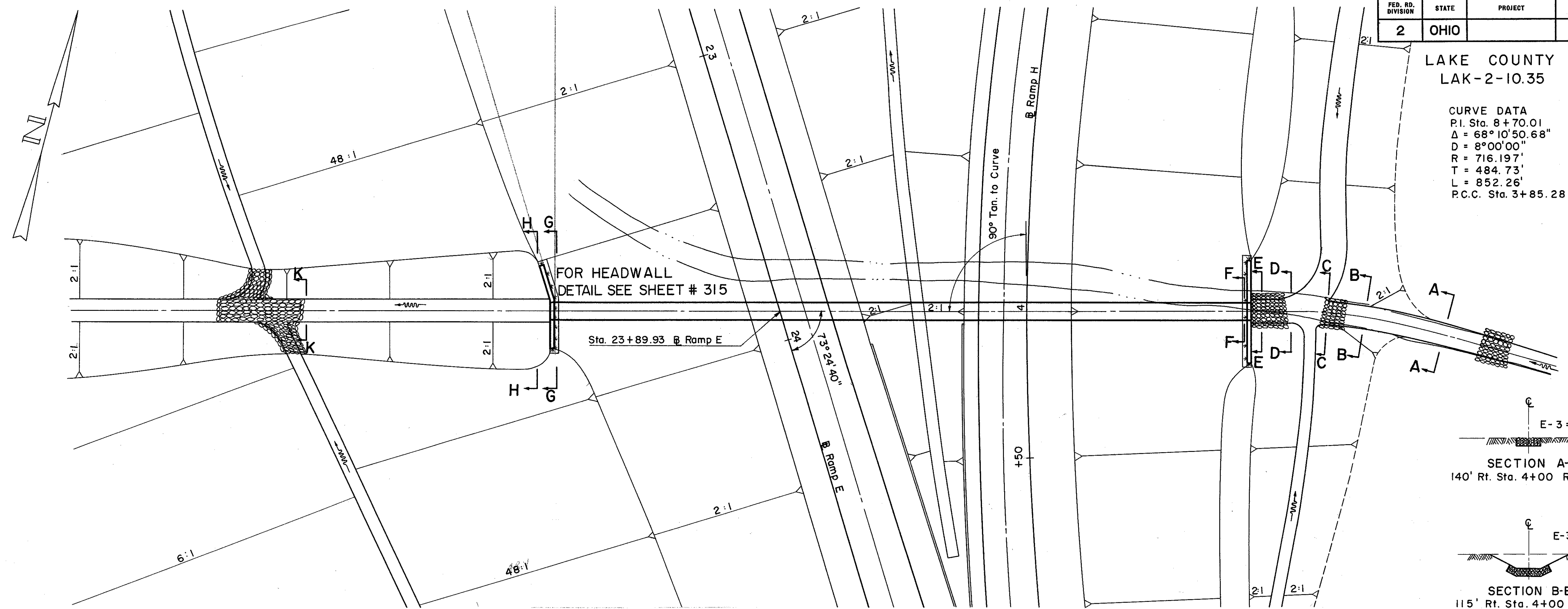
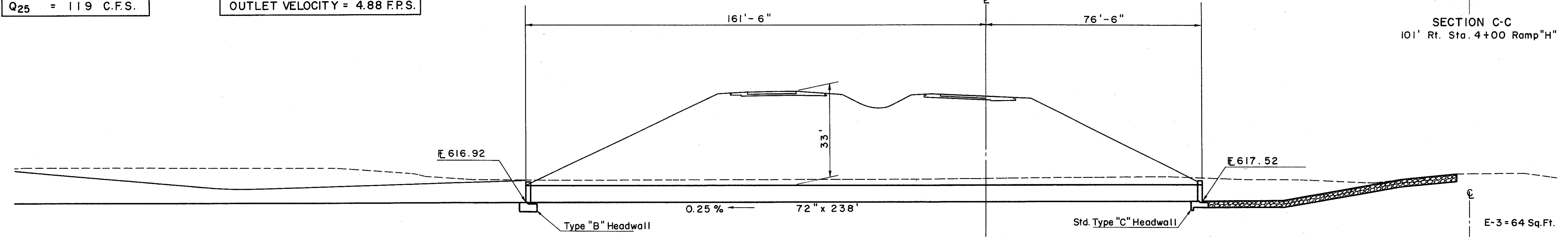


LAKE COUNTY  
LAK-2-10.35

CURVE DATA  
P.I. Sta. 8+70.01  
 $\Delta = 68^{\circ}10'50.68''$   
 $D = 8^{\circ}00'00''$   
 $R = 716.197'$   
 $T = 484.73'$   
 $L = 852.26'$   
P.C.C. Sta. 3+85.28



AREA = 235 ACRES  
 $Q_{25} = 119$  C.F.S.  
HEADWATER = 4.95 FT.  
OUTLET VELOCITY = 4.88 F.P.S.



**ESTIMATED QUANTITIES**

* E-2 Excavation for Structures	177 C.Y.
S-1 Concrete for Structures Class "C"	54.4 C.Y.
S-28 72" Sectional Corrugated Metal Structures	238 L.F.
L-10 Sodding	13 S.Y.
E-3 Channel Excavation	1707 C.Y. #
S-4 Reinforcing Steel	2466 Lbs.
I-10 Dumped Rock Channel Protection	98 C.Y.

\* Includes Excavation for Headwalls

**CULVERT DATA**  
TYPE: Pipe Culvert S-28 M-6.4 (g)(10-8 Ga.)  
SIZE: 72" x 238"  
WORK REQUIRED: Build a pipe culvert with type "B" headwall Lt. & type "C" headwall Rt. Excavate channel Rt. & Lt., sod Rt. & Lt. as shown, place dumped rock as shown.

# See Note on Sheet No 11.

