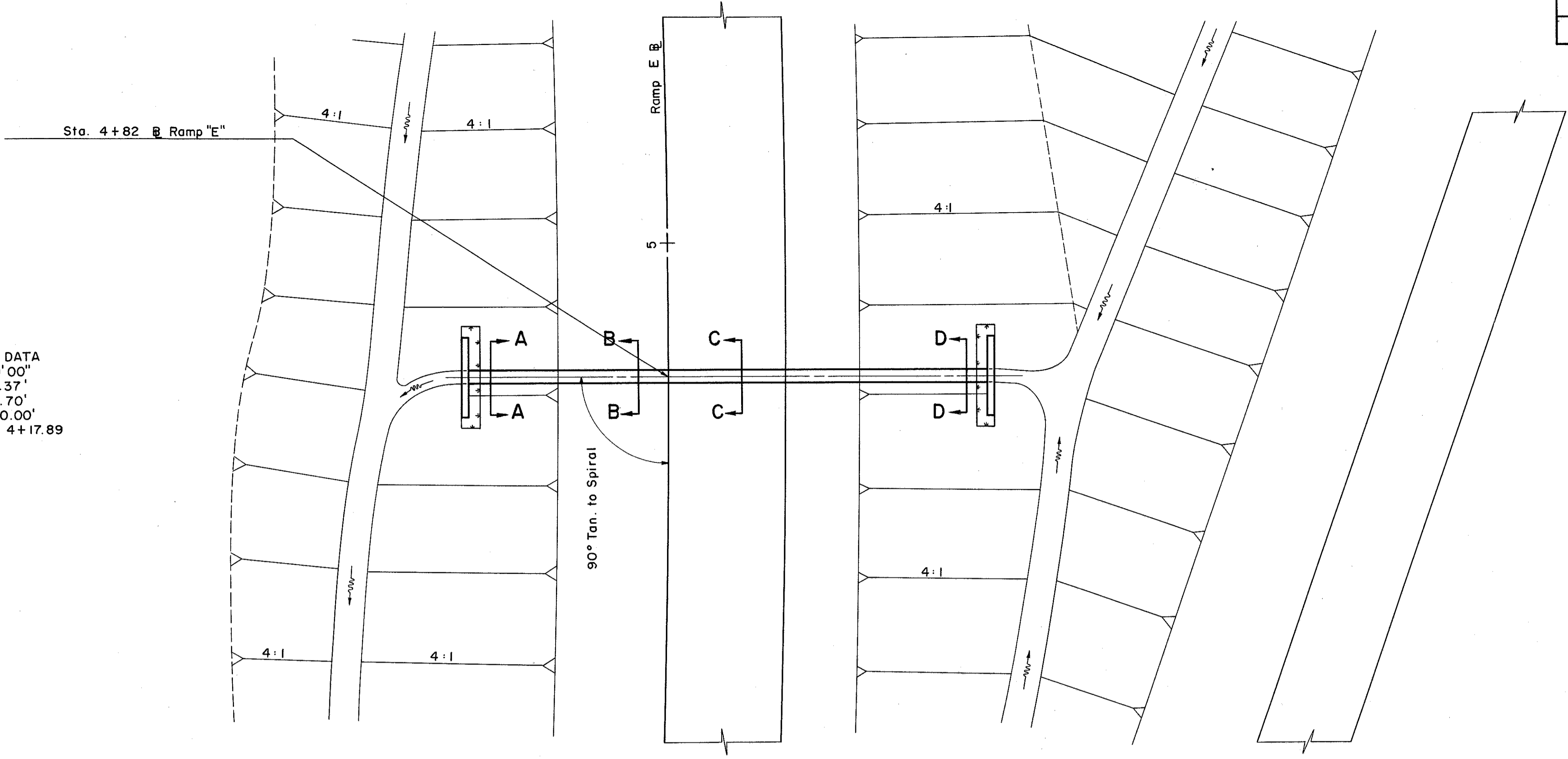
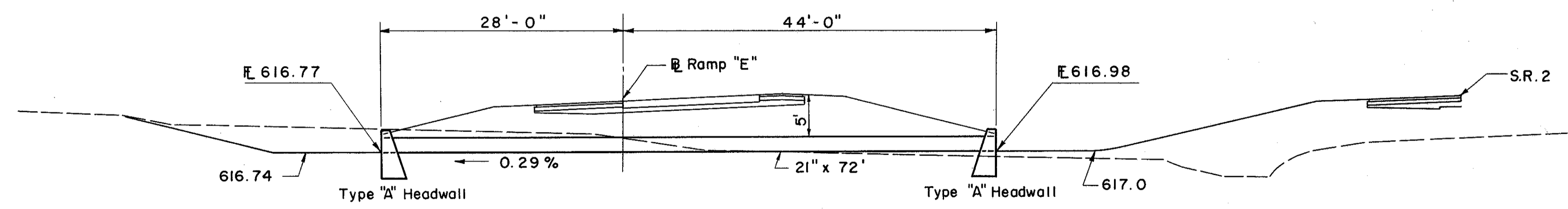


SPIRAL DATA
 $\theta = 4^{\circ}00'00''$
 L.T. = 133.37'
 S.T. = 66.70'
 L.S. = 200.00'
 C.S. Sta. 4+17.89



AREA = 4.5 ACRES
 Q25 = 8.6 C.F.S.

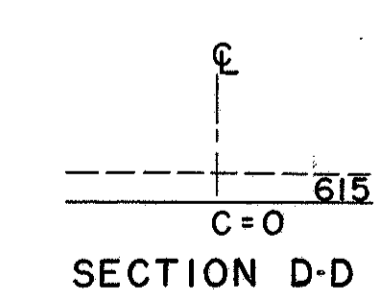
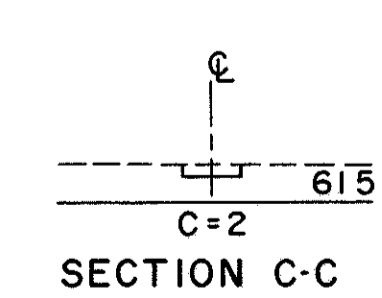
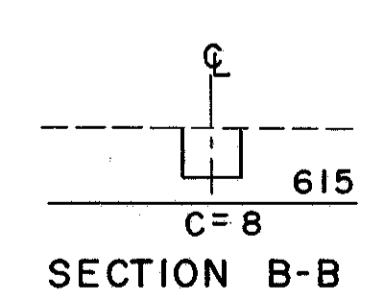
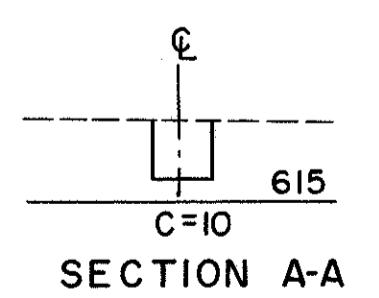
HEADWATER = 2.44 FT.
 OUTLET VELOCITY = 4.13 F.P.S.



ESTIMATED QUANTITIES

*E-2 Excavation for Structures	29 C.Y.
S-1 Concrete for Structures Class "C"	8.4 C.Y.
S-4 Reinforcing Steel	386 Lbs.
S-27 21" Pipe for Roadway Culverts Sec. M-6.6 (b) or Sec. M-6.8 (b)	72 L.F.
L-10 Sodding	5 S.Y.

* Includes E-2 for Headwalls



CULVERT DATA
 TYPE: S-27, Sec. M-6.6(b) or Sec. M-6.8(b), Type "A" Headwalls
 SIZE: 21" x 72"
 WORK REQUIRED: Build a pipe culvert with type "A" headwalls, place sodding rt. and lt. as shown.