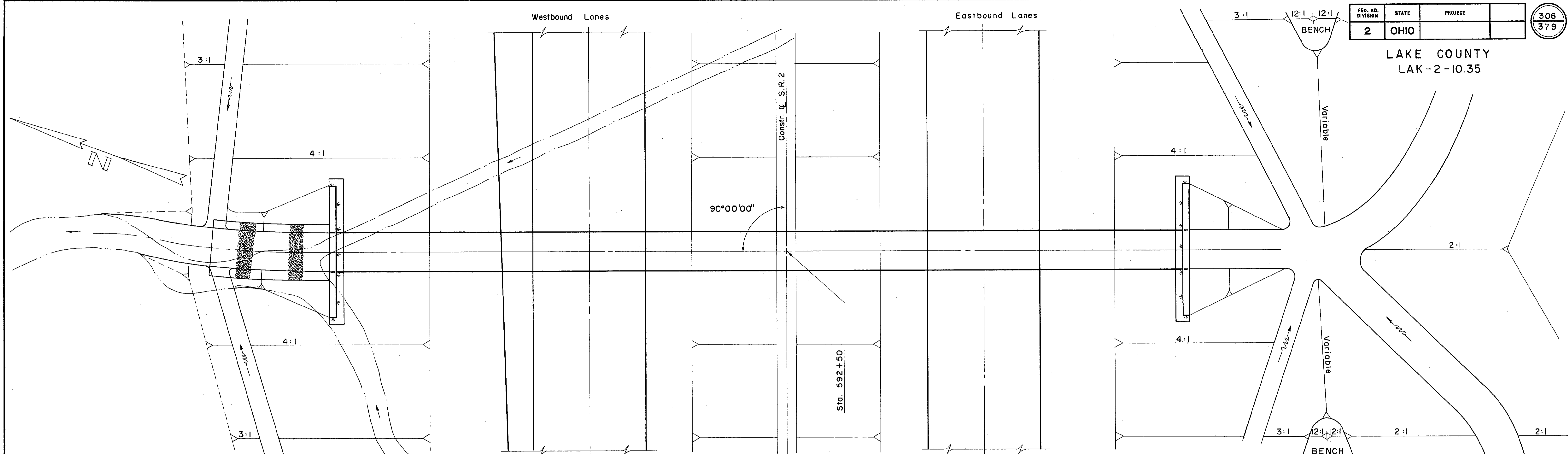
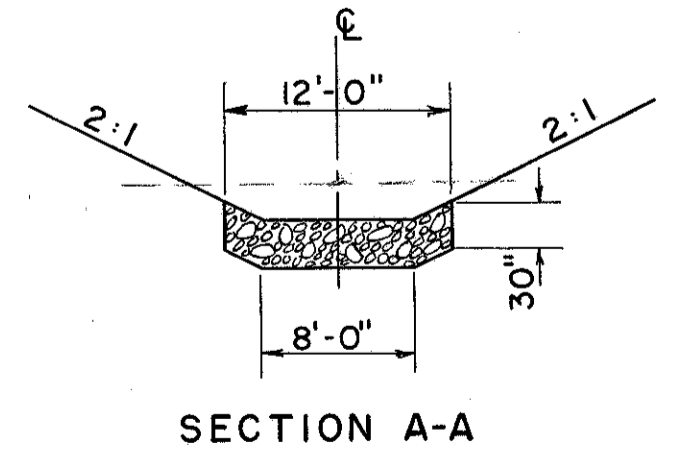
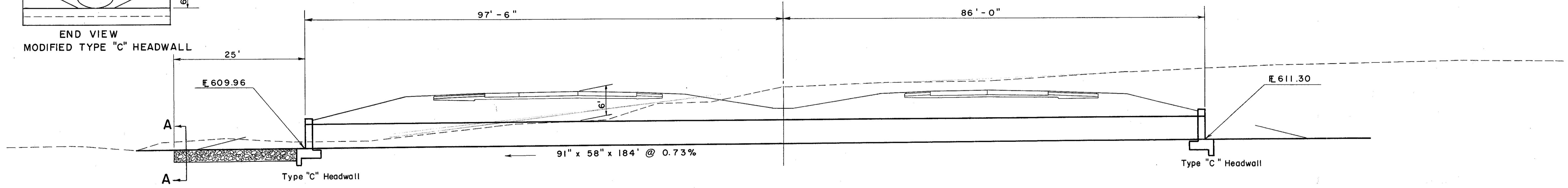
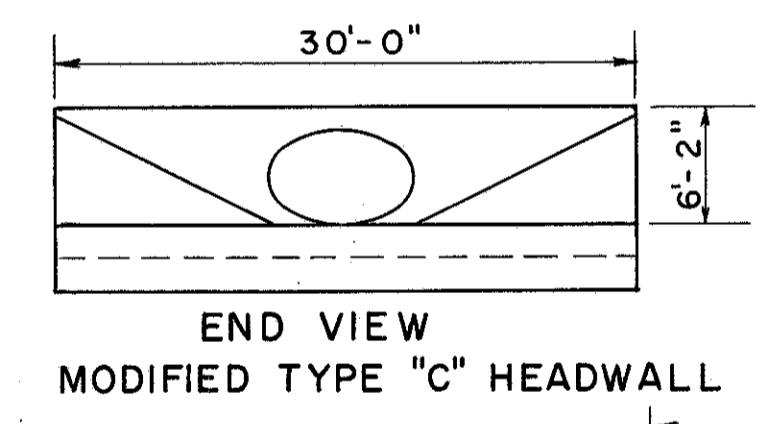


LAKE COUNTY
LAK-2-10.35



AREA = 9.25 ACRES
Q₂₅ = 297 C.F.S.

HEADWATER = 6.14 FT.
OUTLET VELOCITY = 14.0 F.P.S.

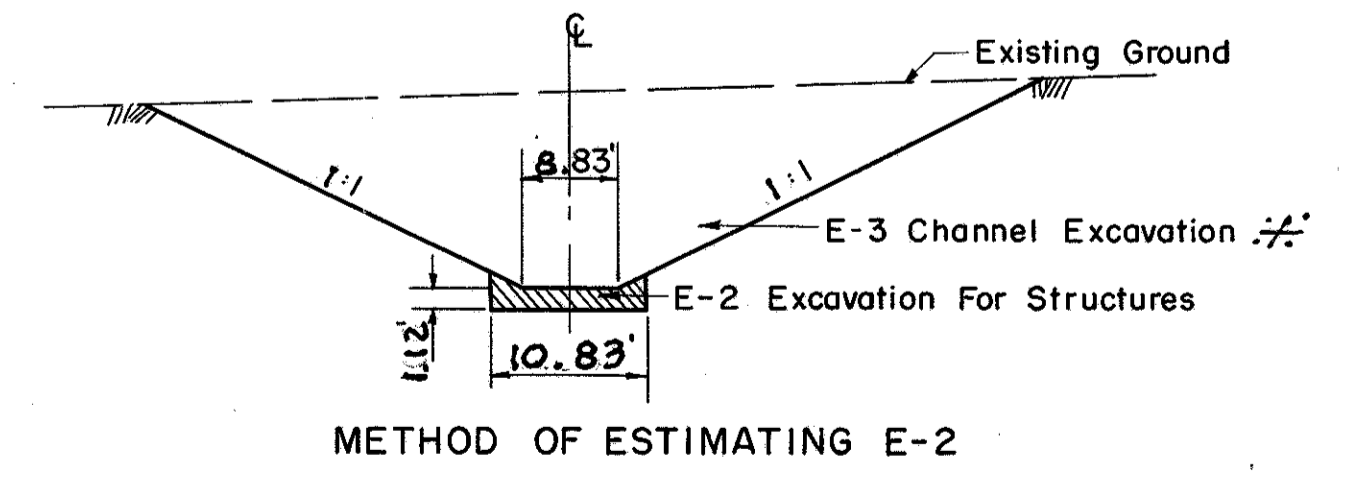


ESTIMATED QUANTITIES

* E-2 Excavation for Structures	161 C.Y.
E-3 Channel Excavation	1920 C.Y. #
S-1 Concrete for Structures Class "C"	40.5 C.Y.
S-4 Reinforcing Steel	1852 Lbs.
S-27 91" x 58" Pipe for Roadway Culvert Sec. M-206.6 (b)	184 L.F.
L-10 Sodding	12 S.Y.
I-10 Dumped Rock Channel Protection	28 C.Y.
* Includes E-2 for headwalls.	

CULVERT DATA

TYPE : S-27 Sec. M-206.6 (b) Type "C" Headwalls
 SIZE : 91" x 58" x 184'
 WORK REQUIRED: Build a pipe culvert with type "C" headwalls. Place sodding Rt. and Lt. and Dumped Rock on Lt. as shown.



See Note on Sheet No 11