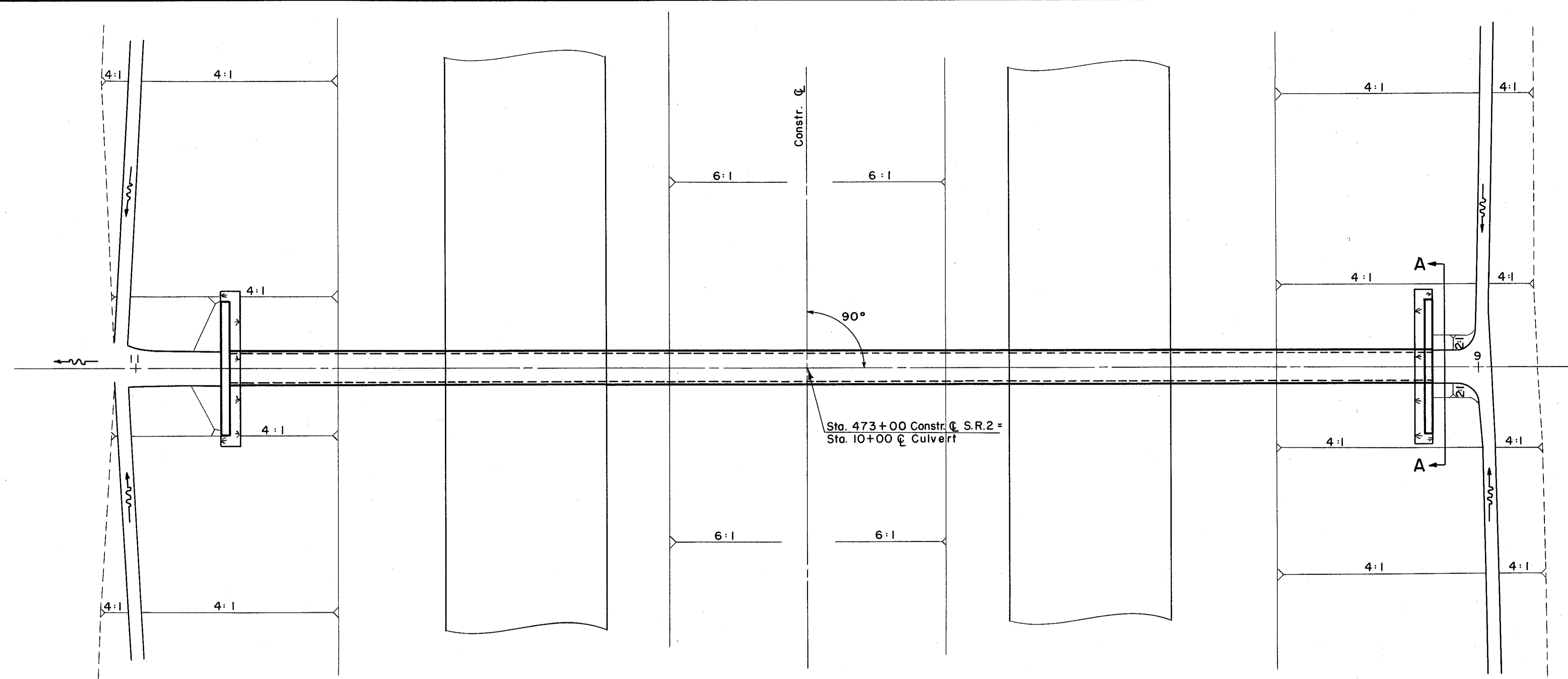
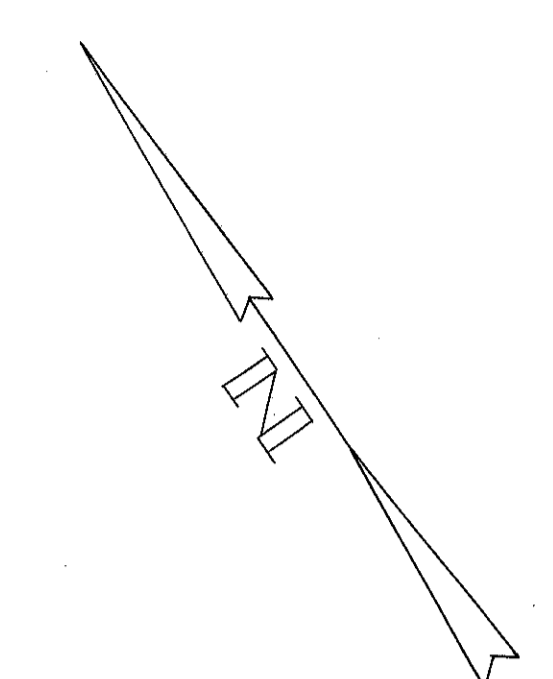


LAKE COUNTY
LAK-2-10.35

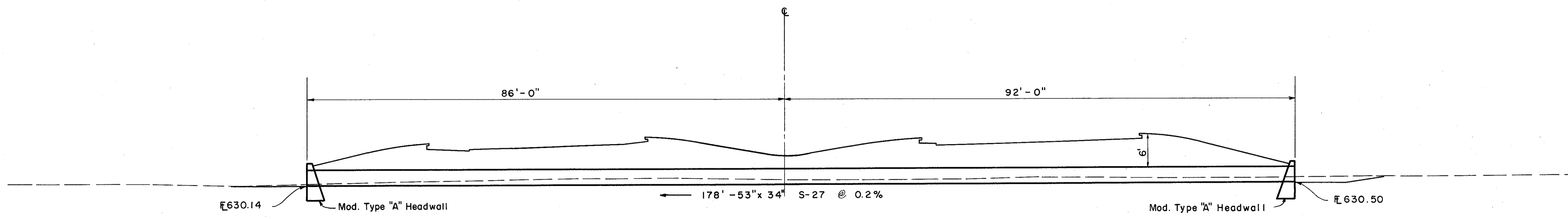


DIMENSIONS OF MODIFIED TYPE A HEADWALL

H = 7'-1"
L = 20'-3"
A = 1'-3"

AREA = 52 ACRES
Q₂₅ = 47 C.F.S.

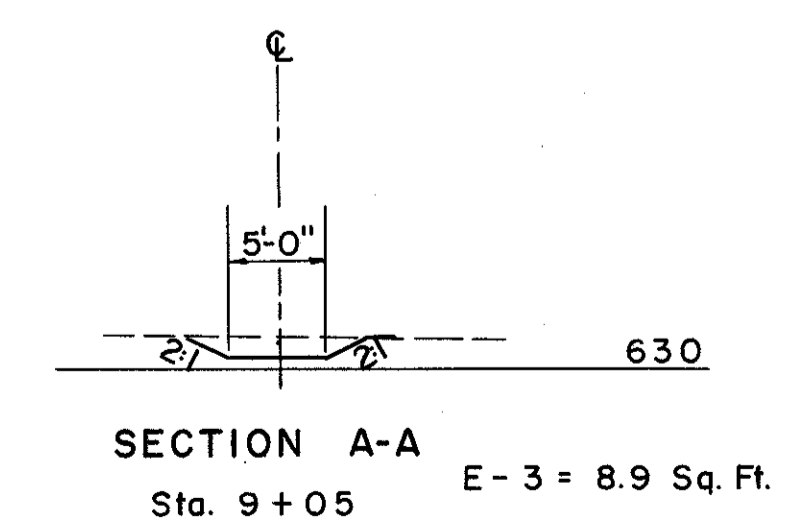
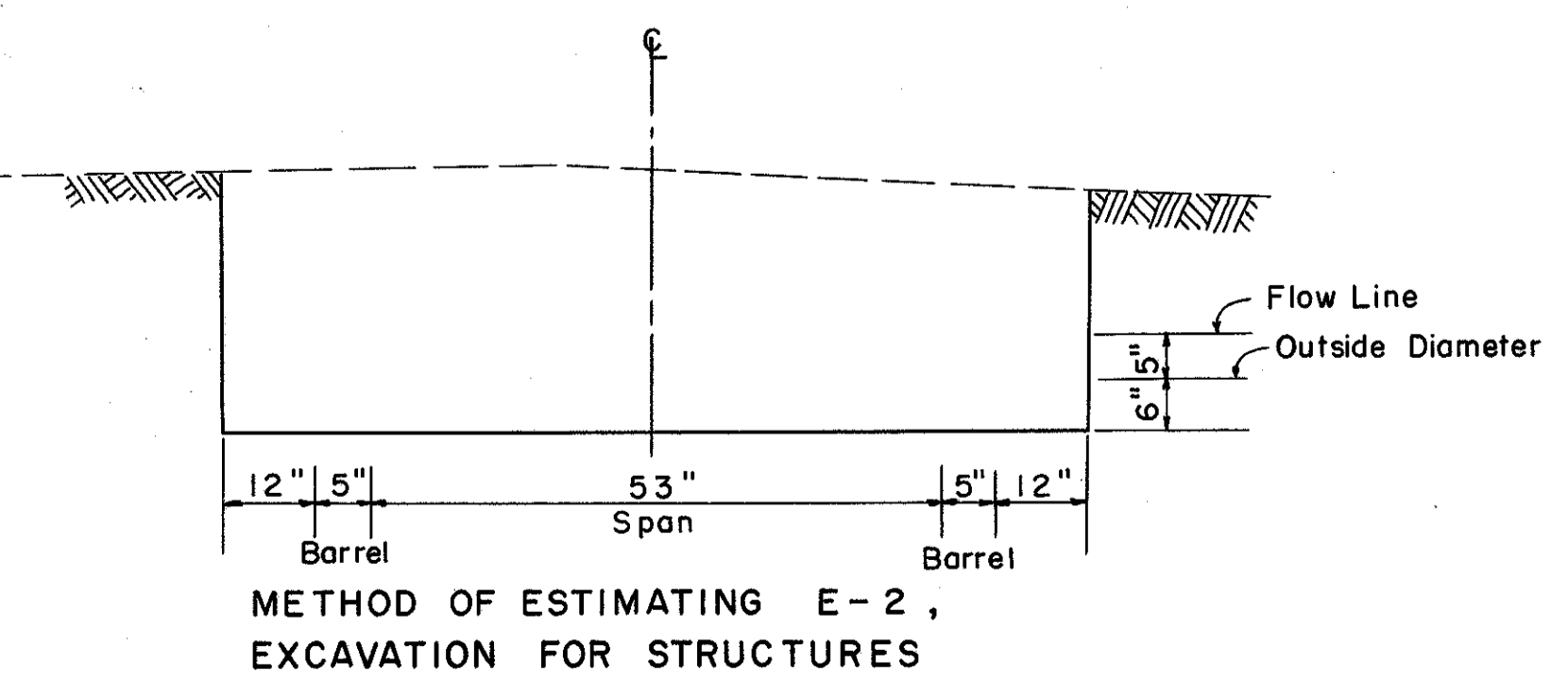
HEADWATER = 2.74 FT.
OUTLET VELOCITY = 5.5 F.P.S.



ESTIMATED QUANTITIES

* E-2	Excavation for Structures	116 C.Y.
E-3	Channel Excavation	2 C.Y.
L-10	Sodding	9 S.Y.
S-1	Concrete for Structures Class "C"	23.4 C.Y.
S-4	Reinforcing Steel	738 Lbs.
S-27	53"x 34" Pipe for Roadway Culverts Sec. M-206.6 (b)	178 L.F.

* Includes Excavation for Headwalls



CULVERT DATA

TYPE: S-27 Sec. M-206.6 (b)
SIZE: 178'-53" x 34"
WORK REQUIRED: Build a pipe culvert with modified type "A" headwalls. Place sodding and excavate channel rt. and lt. as shown.

STRUCTURE NO. LAK-2-1085

PIPE CULVERT STA. 473+00