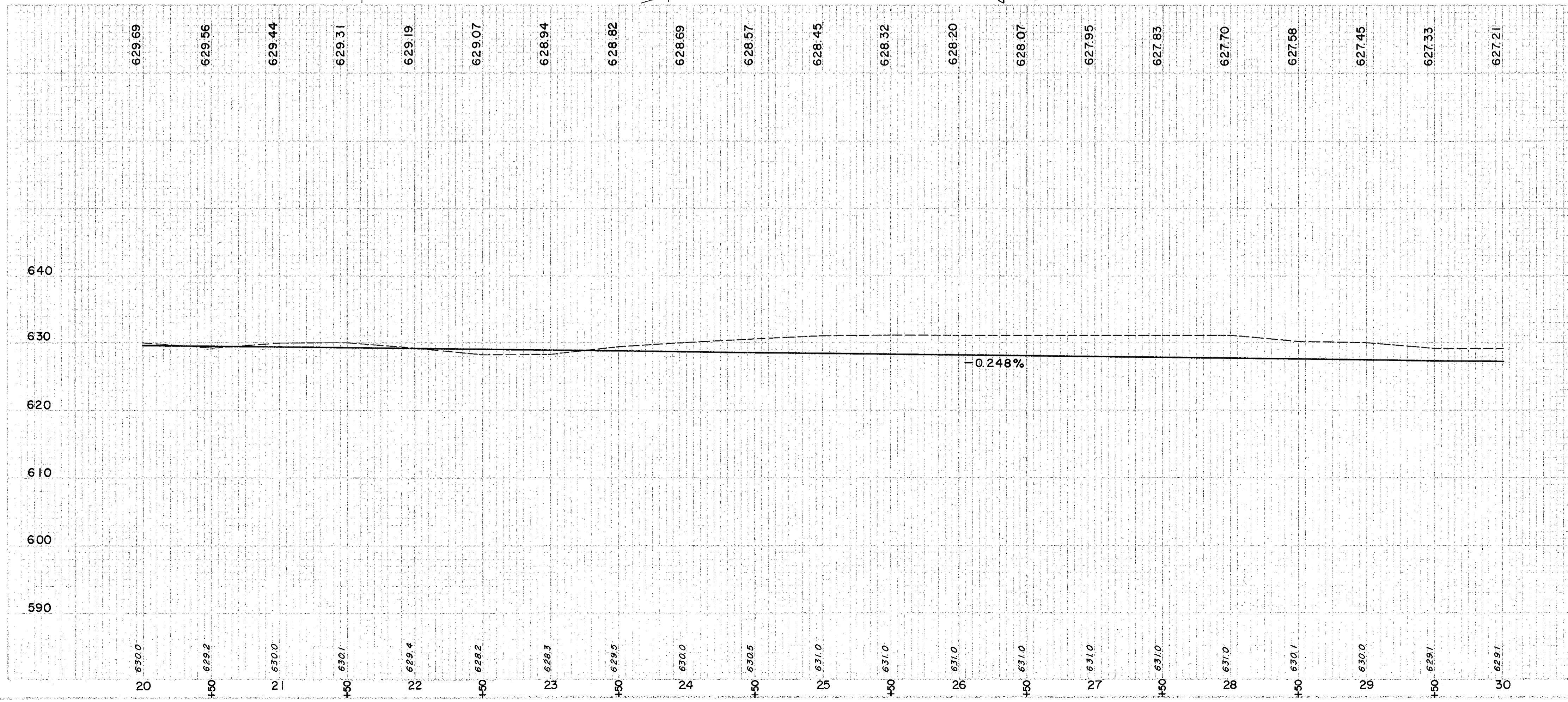
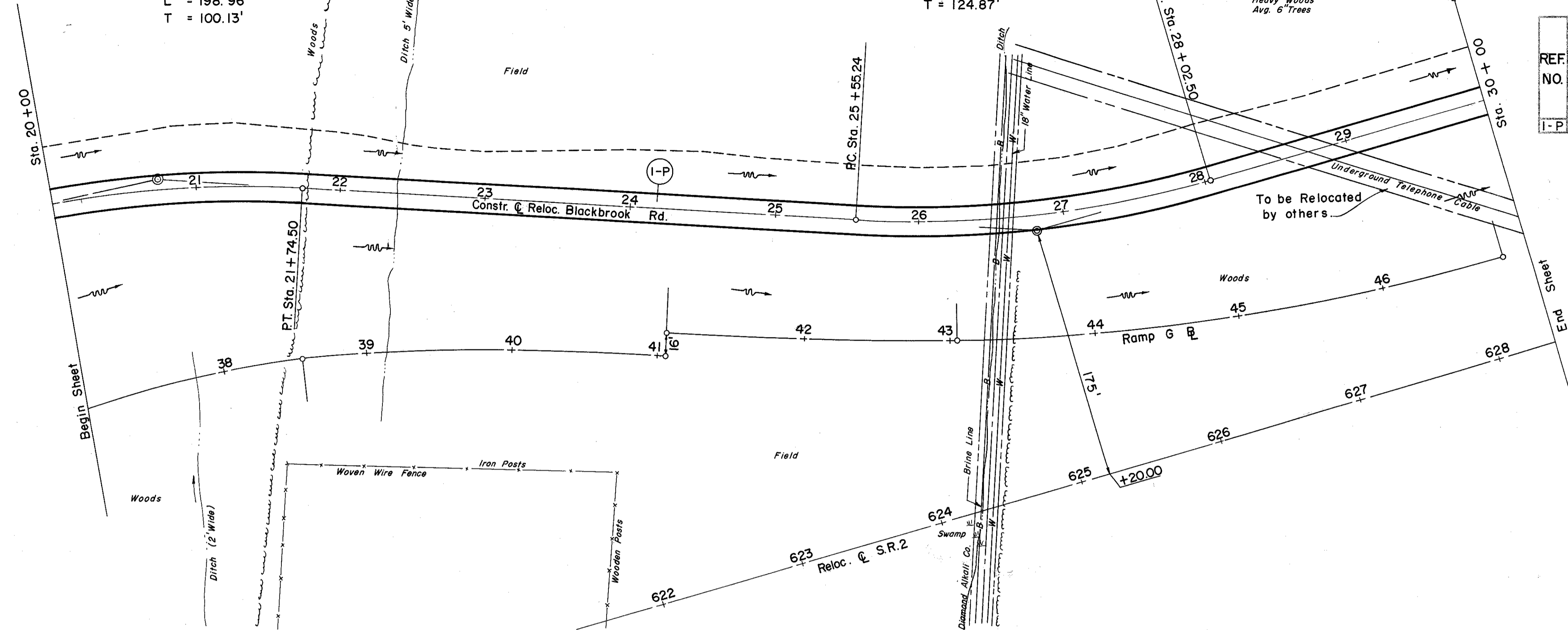
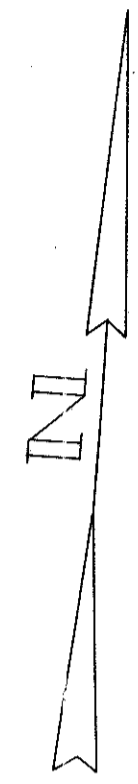


BLACKBROOK RD.
CURVE DATA
P.I. Sta. 20+75.67
(380' Lt. \odot S.R.2 Sta.619+50)
 $\Delta = 15^\circ 55' 01.09''$
D = 8° 00' 00"
R = 716.197'
L = 198.96'
T = 100.13'

RELOC. BLACKBROOK RD.
CURVE DATA
P.I. Sta. 26+80.11
(175' Lt. \odot S.R.2 Sta.625+20)
 $\Delta = 19^\circ 46' 51.88''$
D = 8° 00' 00"
R = 716.197'
L = 247.26'
T = 124.87'

(P) PAVEMENT

REF. NO.	STATION	SIDE \odot	T-32		T-30	B-19	I-22	I-9	E-1			
			# 46 AGGR. FOR ROAD MIX C.Y.	BIT. MATL. FOR ROAD MIX GAL.	# 6 AGGR. FOR CHOKE C.Y.	# 6 AGGR. FOR SEAL C.Y.	BIT. MATL. FOR SEAL GAL.	BIT. PRIME COAT GAL.	CRUSHED AGGR. BASE COURSE C.Y.	SUB-BASE C.Y.	STONE UNDER-DRAIN L.F.	COMPACT. SUBGR. S.Y.
I-P	20+00	30+00	124.44	2000	8.89	17.78	555.56	888.89	324.07	271.60	324	2444.44



Excavation	10,026 C.Y.
Embankment	42 C.Y.
Embankment + 20'	50 C.Y.