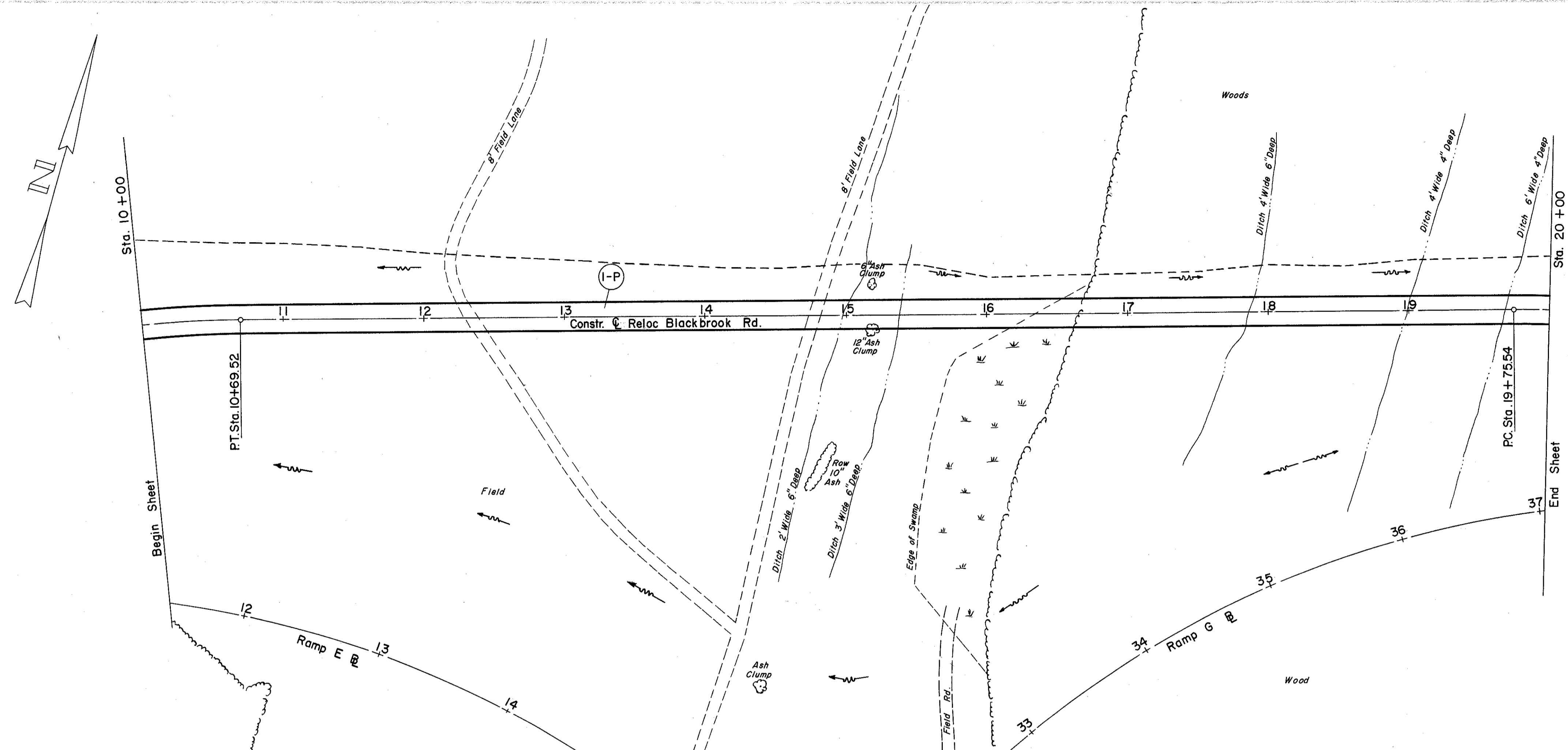
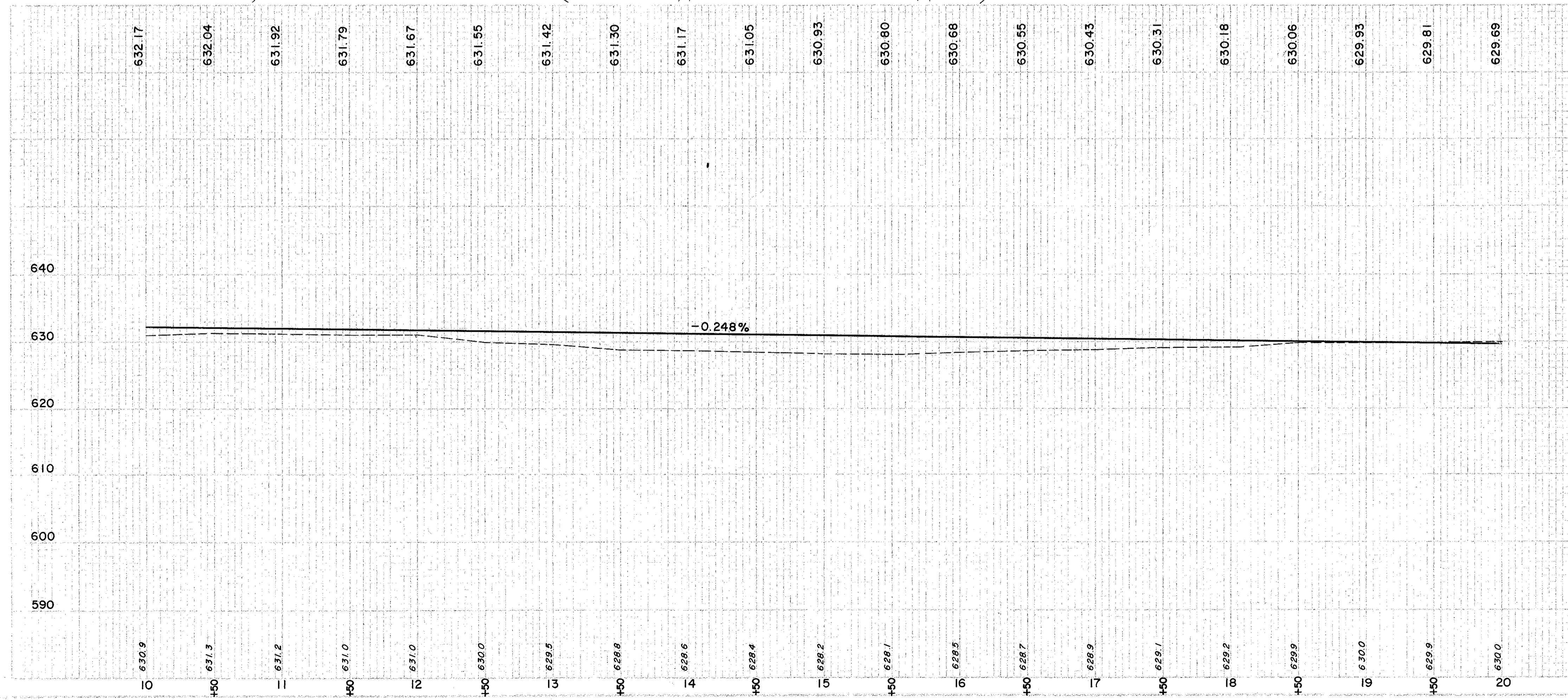


LAKE COUNTY  
LAK-2-10.35



(P) PAVEMENT

REF. NO.	STATION	SIDE	T-32	T-32	T-32	T-32	T-32	T-30	B-19	I-22	I-9	E-1
			# 46 AGGR FOR ROAD MIX	BIT. MATL. FOR ROAD MIX	# 6 AGGR. FOR CHOKE	# 6 AGGR. FOR SEAL	BIT. MATL. FOR SEAL	BIT. PRIME COAT	CRUSHED AGGR. BASE COURSE	SUB-BASE	STONE UNDER-DRAIN	COMPACT. SUBGR.
	FROM	TO	C.Y.	GAL.	C.Y.	C.Y.	GAL.	GAL.	C.Y.	C.Y.	L.F.	S.Y.
I-P	10+00	20+00	124.44	2000	8.89	17.78	555.56	888.89	324.07	271.60	420	2444.44



EXCAVATION	= 8,734 C.Y.
EMBANKMENT	= 1,414 C.Y.
EMBANKMENT + 20%	= 1,697 C.Y.