

LAKE COUNTY
LAK-2-1035

D DRAINAGE

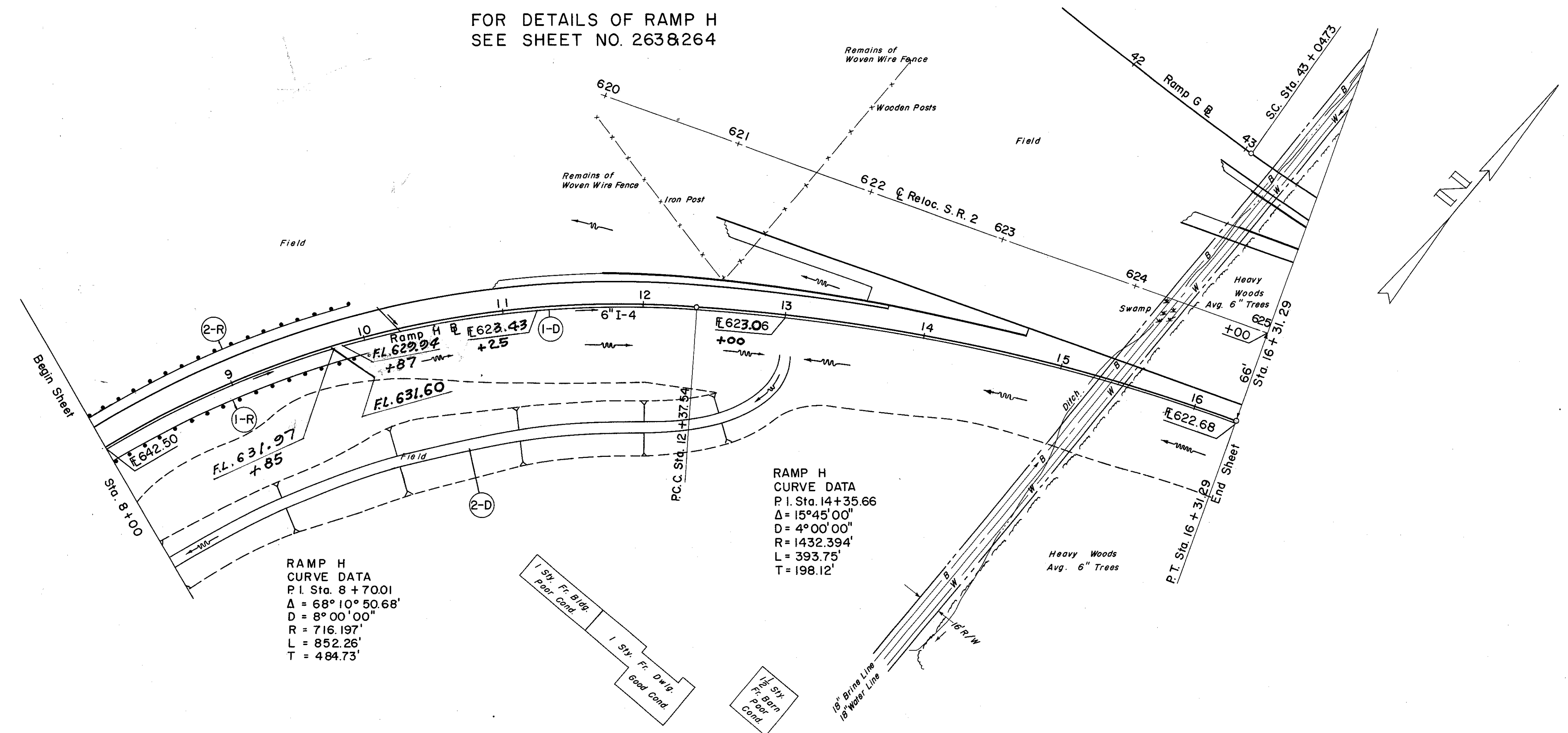
REF. NO.	STATION	SIDE	I-4		I-5		E-3
			6" UNDERDRAIN	8" OUTLET PIPE SEC.	60° BEND	60° WYE	
1-D	8+00	16+31.29	205	664	10	1	1
2-D	8+00	13+00	RT.				5,145

R ROADWAY

REF. NO.	STATION	SIDE	I-15	
			RAIL STEEL BEAM	STD. TYPE (DEEP)
1-R	8+00	10+00	RT.	200.0
2-R	8+00	9+95	LT.	200.0
TOTAL				400.0

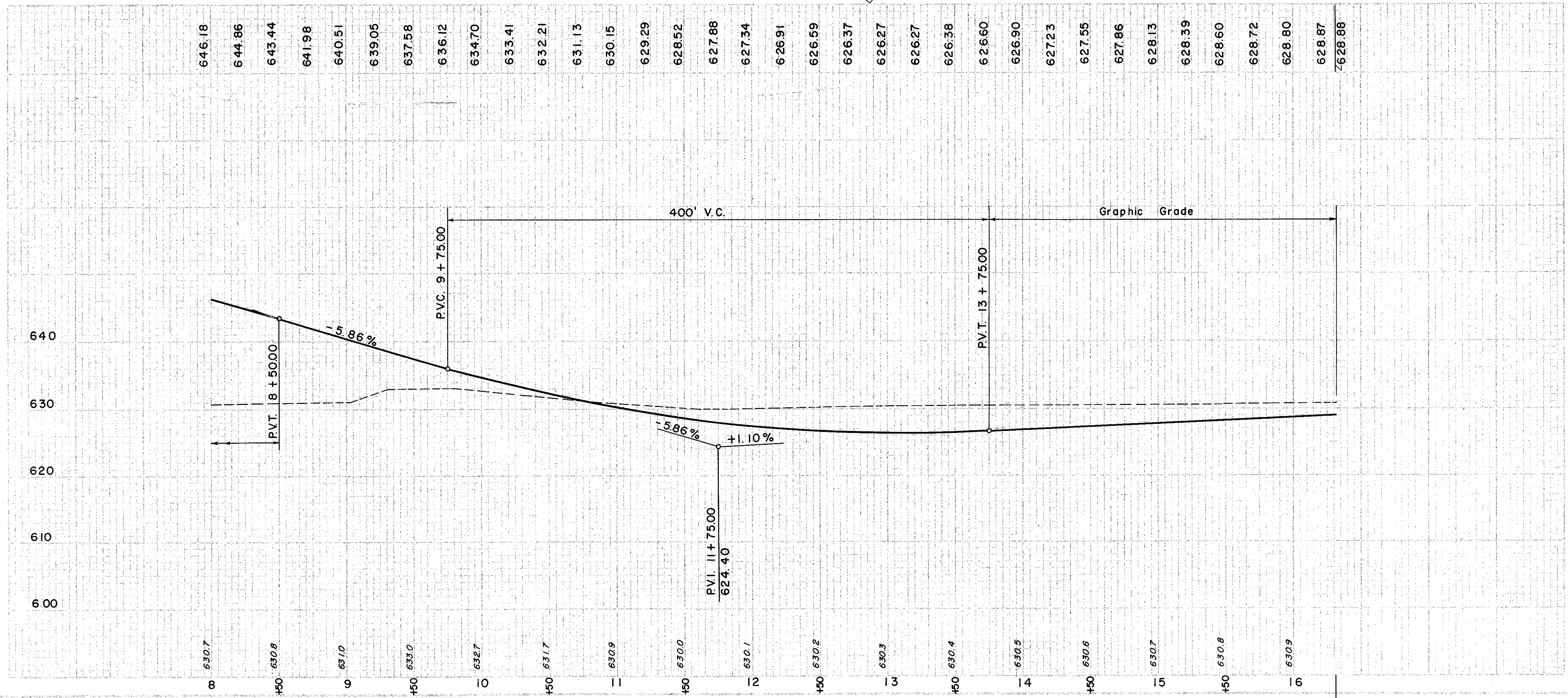
FOR PAVEMENT QUANTITIES
SEE SHEET NO. 210

FOR DETAILS OF RAMP H
SEE SHEET NO. 263&264



RAMP H
CURVE DATA
P.I. Sta. 8 + 70.01
Δ = 68° 10' 50.68"
D = 8° 00' 00"
R = 716.197'
L = 852.26'
T = 484.73'

RAMP H
CURVE DATA
P.I. Sta. 14 + 35.66
Δ = 15° 45' 00"
D = 4° 00' 00"
R = 1432.394'
L = 393.75'
T = 198.12'



EXCAVATION	13,661 C.Y.
EMBANKMENT	4,655 C.Y.
ROADWAY	20' 5,586 C.Y.

PT. Sta. 16 + 31.29 B Ramp H =
Sta. 625 + 00.00 C Reloc. S.R.2 (66' Rt.)

RAMP H RELOC. S.R.44 INTERCHANGE
STA. 8+00 TO STA. 16+31.29