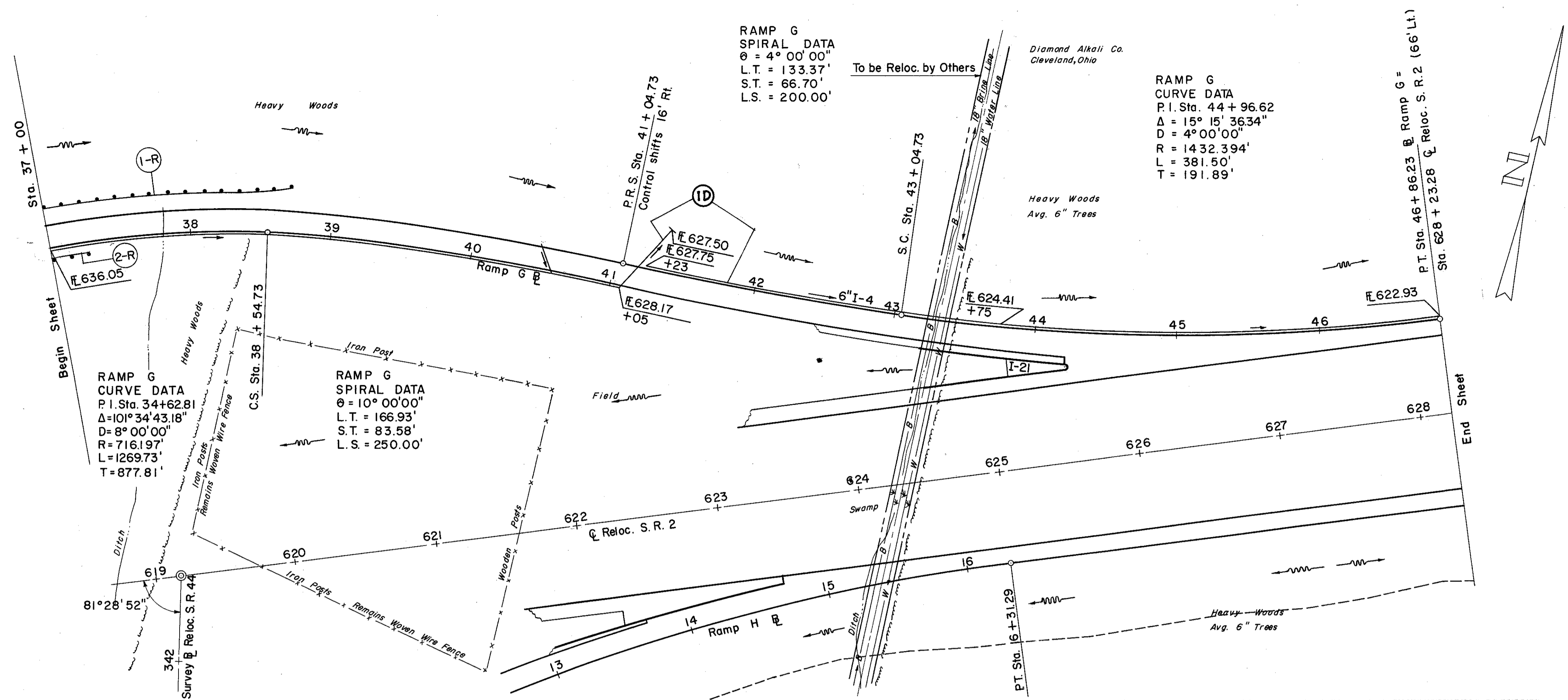


FOR DETAILS OF RAMP G  
SEE SHEET NO. 263 & 264

LAKE COUNTY  
LAK-2-10.35

RAMP G  
SPIRAL DATA  
θ = 4° 00' 00"  
L.T. = 133.37'  
S.T. = 66.70'  
L.S. = 200.00'

RAMP G  
CURVE DATA  
P.I. Sta. 44+96.62  
Δ = 15° 15' 36.34"  
D = 4° 00' 00"  
R = 1432.394'  
L = 381.50'  
T = 191.89'



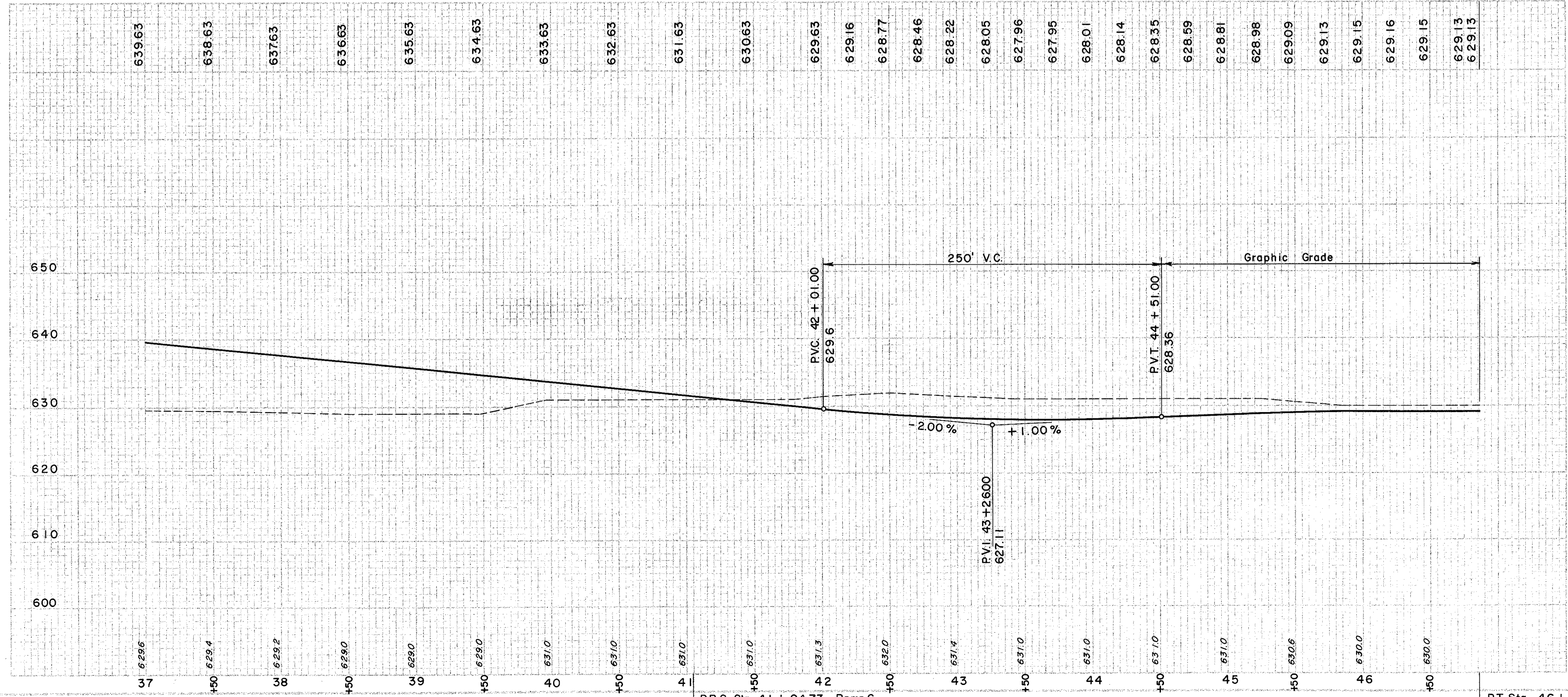
ⓓ DRAINAGE

REF. NO.	STATION	SIDE	I-2		I-4		I-5	
			8" CLASS A STM. SWR. UNDER PAVT. SEC. OR M-6.8(b)	8" OUTLET PIPE SEC. M-6.4(c)	6" PIPE UNDERDRAIN	6" 60° BEND	6"x8" INCREASER	6" 60° WYE
	FROM	TO	L.F.	L.F.	L.F.	L.F.	L.F.	EA.
I-D	37+00	46+86.23	44	10	425	563		

ⓓ ROADWAY

REF. NO.	STATION	SIDE	I-15 GUARD RAIL STEEL BEAM STD. TYPE (DEEP)	
			L.F.	L.F.
1-R	37+00	38+70	LT.	175.0
2-R	37+00	37+25	RT.	25.0
			TOTAL	200.0

FOR PAVEMENT QUANTITIES  
SEE SHEET NO. 206



Excavation	= 8,478 C.Y.
Embankment	= 5,623 C.Y.
Embankment + 20"	= 6,748 C.Y.

PR.S. Sta. 41 + 04.73 Ramp G Control shifts 16' Lt.

P.T. Sta. 46 + 86.23 Ramp G = Sta. 628 + 23.28 Reloc. S.R.2 (66' Lt.)

RAMP G RELOC. S.R.44 INTERCHANGE  
STA. 37+00 TO STA. 46+86.23