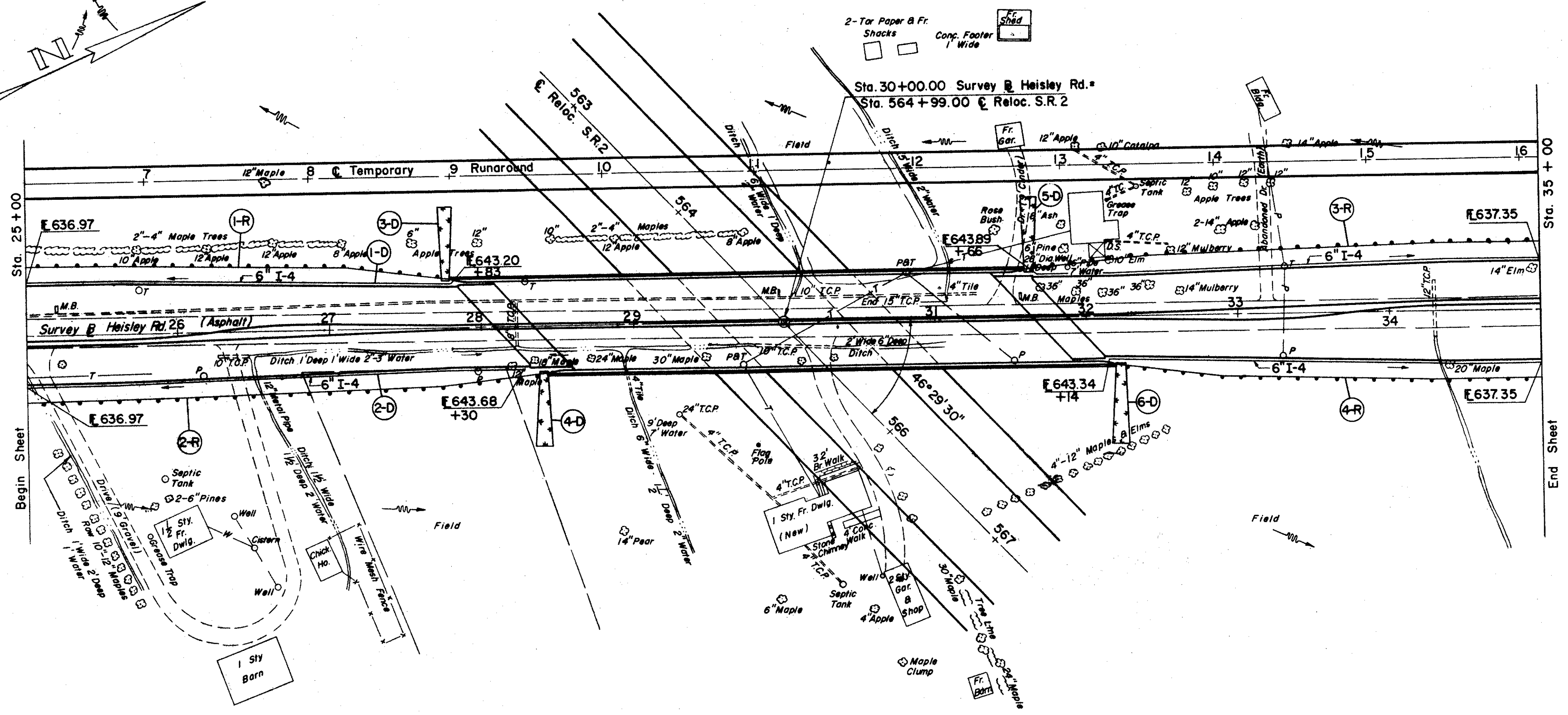
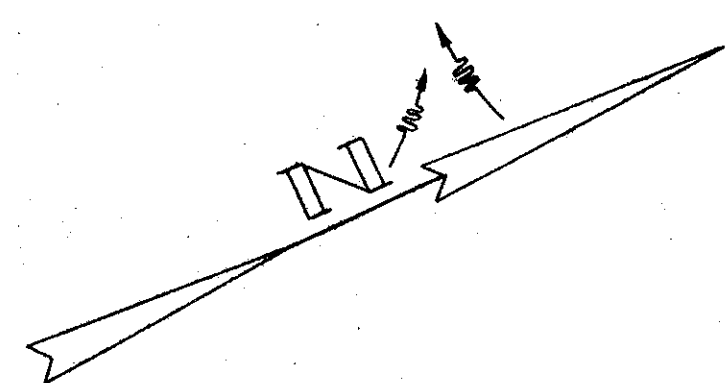


FOR DETAILS OF HEISLEY ROAD
SEE SHEETS NO. 192 - 197

FED. RD. DIVISION	STATE	PROJECT	
2	OHIO		

148
379

LAKE COUNTY
LAK-2-10.35



(D) DRAINAGE

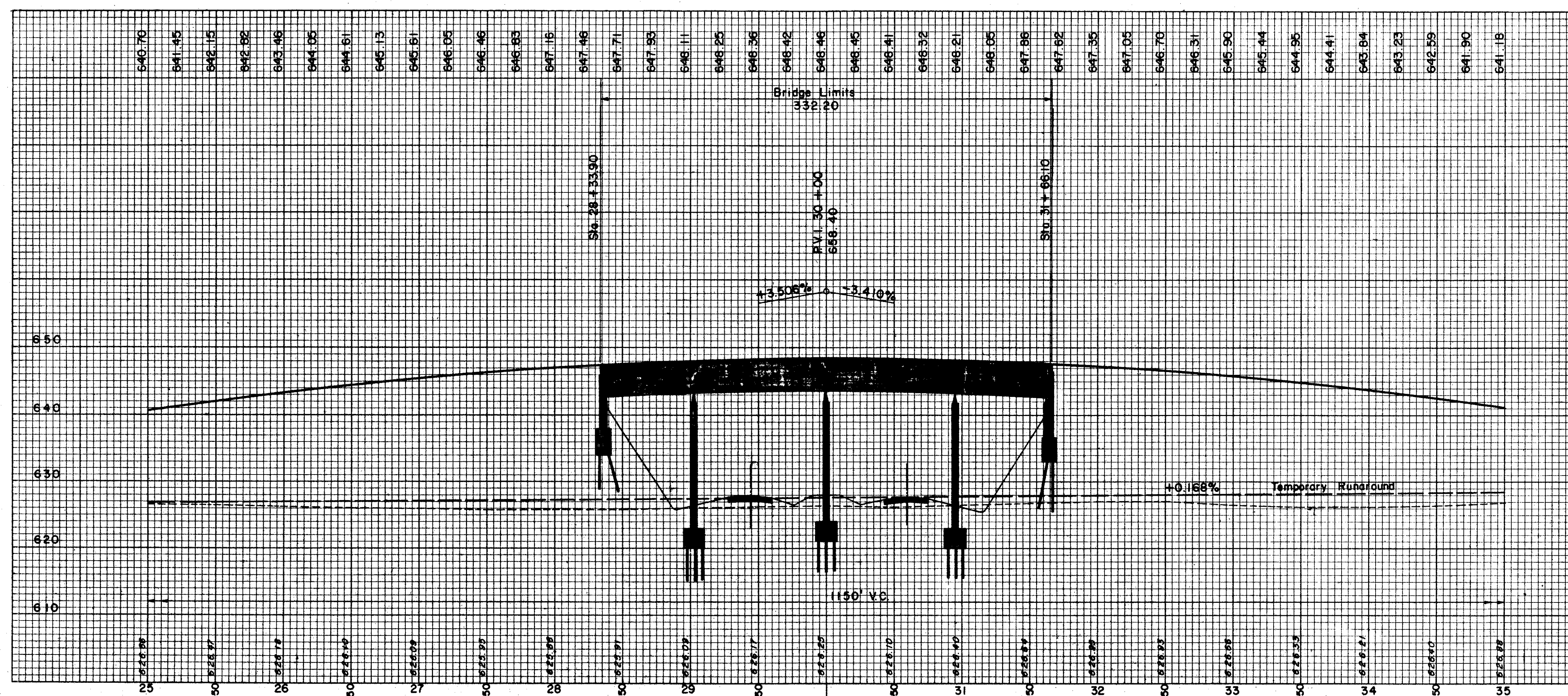
REF. NO.	STATION		SIDE	SODDING FOR SPECIAL BERM & SLOPE PROTECT. S.Y.	I-4 6" SHALLOW PIPE UNDER DRAIN
	FROM	TO			
1-D	25+00	35+00	LT.		617
2-D	25+00	35+00	RT.		616
3-D	27+78		LT.	46	
4-D	28+43		RT.	49	
5-D	31+61		LT.	50	
6-D	32+21		RT.	51	

(R) ROADWAY

REF. NO.	STATION		SIDE	I-15 GUARD RAIL STEEL BEAM STD. TYPE (DEEP)
	FROM	TO		
1-R	24+98.5	27+80	LT.	275
2-R	25+03	28+47	RT.	3375
3-R	31+60	35+02	LT.	350
4-R	32+20	35+00	RT.	275
TOTAL				1237.5

PAVEMENT QUANTITIES SHOWN
ON SHEET NO. 147

PROPOSED STRUCTURE
 TYPE: 4 Span Continuous Plate Girder with Reinforced Concrete Deck and Substructure
 SPANS: 67'-0", 96'-0", 96'-0", 67'-0" c/c Bearings.
 ROADWAY: 59'-0" f/f 2'-2" Safety Curbs
 LOAD FREQUENCY: C.F. = 400
 SKEW: 43° 30' 30" Rt.
 WEARING SURFACE: 1" Monolithic Concrete
 APPROACH SLABS: 25'-0" Long
 ALIGNMENT: S.R. 26 Heisley Road Tangent
 TRAFFIC: 1975 A.D.T. = 8560



Sta. 30+00 Constr. of Heisley Rd.
Sta. 564+99.00 Reloc. S.R.2

ENCLOSURE
JUL 1 1985

EXCAVATION	= 1,491 C.Y.
EMBANKMENT	= 53,516 C.Y.
EMBANKMENT + 20%	= 64,219 C.Y.

Thru (Down) Cont'd L.S.L. - 11/24/87