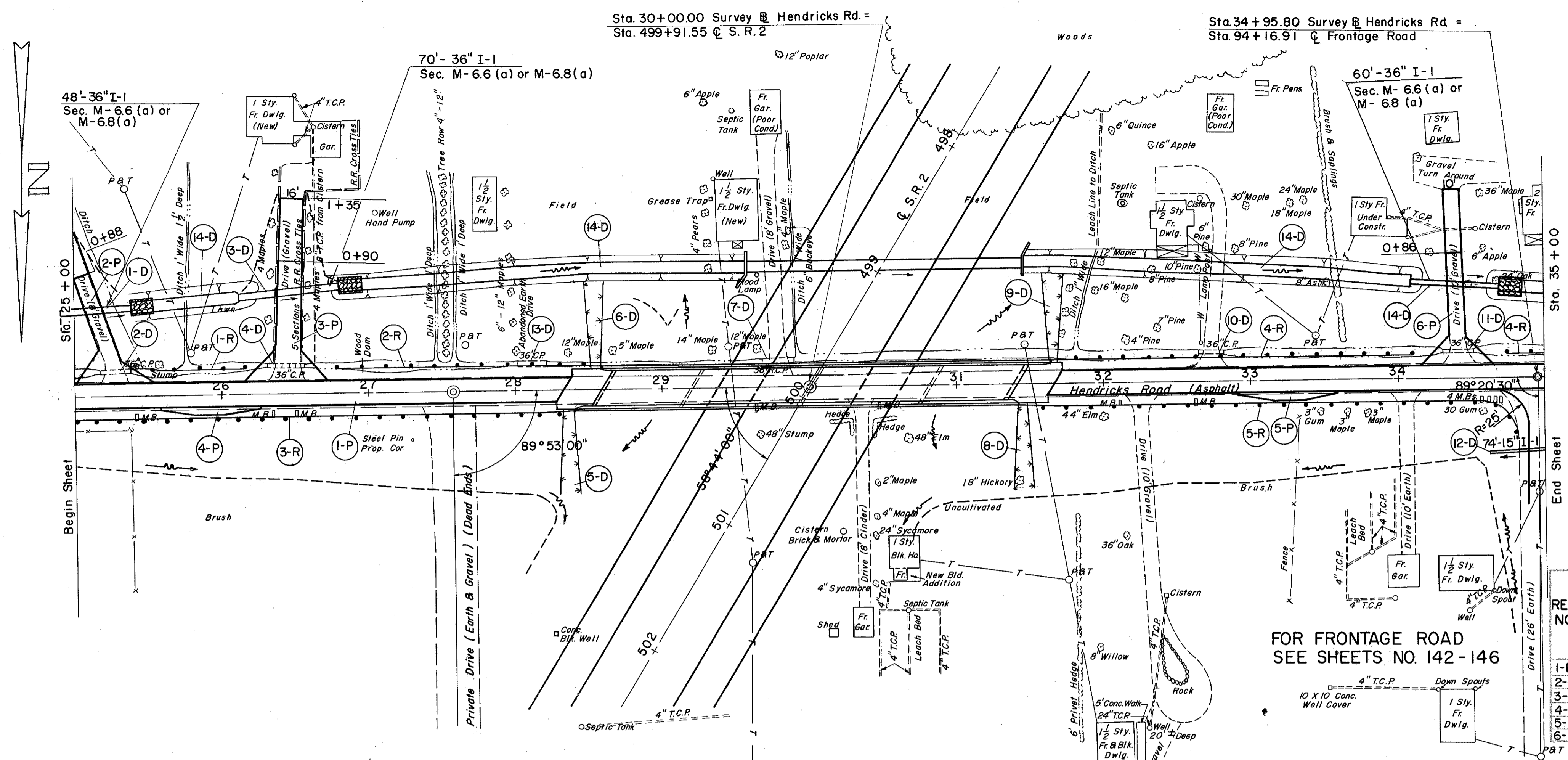


8-5

F-14

LAKE COUNTY
LAK-2-10.35



(D) DRAINAGE

REF. NO.	STATION	SIDE	PIPE FOR DRIVEWAYS		L-10 SODDING FOR SPECIAL BERM & SLOPE PROTECT.	E-12 PIPE REMOVAL OVER 15"	E-3 CHANNEL EXC.	I-10 DUMPED ROCK CHANNEL PROTECT.
			36" L.F.	15" S.Y.				
1-D	24+92	25+55	LT.	48				17
2-D	25+18	25+39	LT.			21		
3-D	26+13	26+98	LT.	70				17
4-D	26+32	26+57	LT.			25		
5-D	28+39		RT.		61			
6-D	28+58		LT.		69			
7-D	29+70	29+92	LT.			22		
8-D	31+43		RT.		70			
9-D	31+62		LT.		72			
10-D	32+66	32+84	LT.			18		
11-D	34+31	34+52	LT.			21		
12-D	34+59	35+33	RT.	74				
13-D	28+01	28+21	LT.			20		
14-D	25+00	35+00	LT.	60			851	17

(P) PAVEMENT

REF. NO.	STATION	SIDE	#46 AGGR. FOR ROAD MIX		T-32 #6 AGGR. FOR CHOKE		T-30 BIT. MATL. FOR SEAL		B-19 CRUSHED AGGR. BASE COURSE	I-22 SUBBASE	I-9 STONE UNDER DRAIN	I-7 REINF. CONCR. APPR. SLAB (1-13)	E-1 COMPACT. SUBGRADE
			C.Y.	GAL.	C.Y.	C.Y.	GAL.	GAL.					
1-P	25+00	35+00	66.48	1068.38	4.75	9.50	296.77	474.84	175.10	164.56	336	145.57	1481.05
2-P	25+35±		7.62	122.50	0.54	1.09	34.03	54.44	23.84				
3-P	26+44±		10.65	171.20	0.76	1.52	47.56	76.09	37.53				
4-P	25+90±		1.88	30.15	0.13	0.27	8.38	13.40	4.65				
5-P	33+30±		1.88	30.15	0.13	0.27	8.38	13.40	4.65				
6-P	34+41±		7.34	118.00	0.52	1.05	32.78	52.44	25.00				

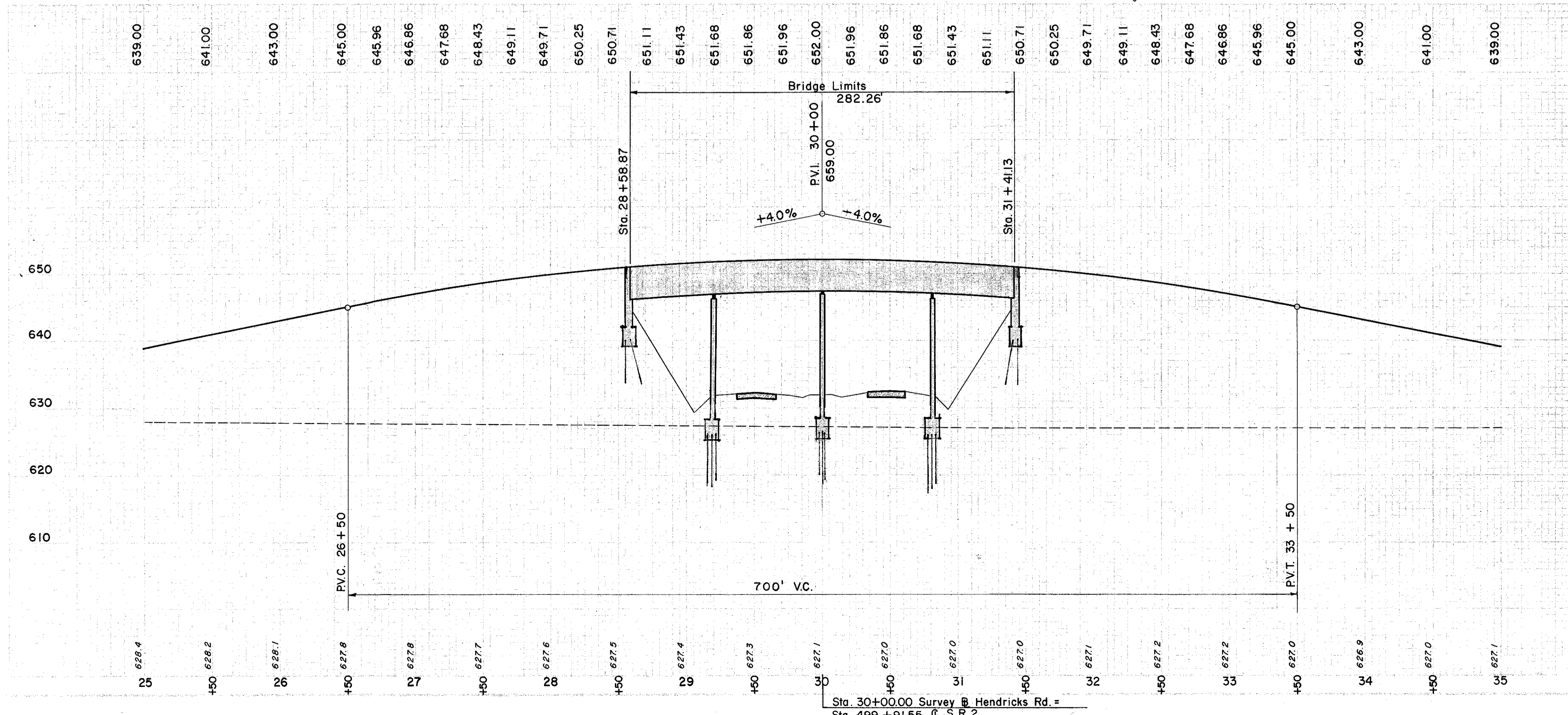
FOR FRONTAGE ROAD
SEE SHEETS NO. 142-146

(R) ROADWAY

REF. NO.	STATION		SIDE	I-5 GUARD RAIL WIRE CABLE TYPE
	FROM	TO		
1-R	25+53	26+17	LT.	64
2-R	26+81	28+57	LT.	176
3-R	25+00	28+38	RT.	336
4-R	31+58	35+00	LT.	256
5-R	31+43	34+82	RT.	352
TOTAL				1284

PROPOSED STRUCTURE
 TYPE: Four Span Continuous Steel Beam with Reinforced Concrete Deck & Substructure
 SPAN: 57'-0", 81'-6", 81'-6", 57'-0" c/c Bearings
 ROADWAY: 24'-0" w/ 2'-2" Safety Curbs
 LOAD FREQUENCY: C.F. - 130
 SKEW: 31° 16' 00" L.F.
 WEARING SURFACE: 3/4" Monolithic Concrete
 APPROACH SLABS: Special - 25'-0" Long
 ALIGNMENT: S.R. 2 & Hendricks Rd. Tangent
 TRAFFIC: 1975 A.D.T. = 400

MICROFILMED
JUL 3 1985



EQUIPMENT	184 C.Y.
EQUIPMENT	37,354 C.Y.
EQUIPMENT	20 % 44,825 C.Y.