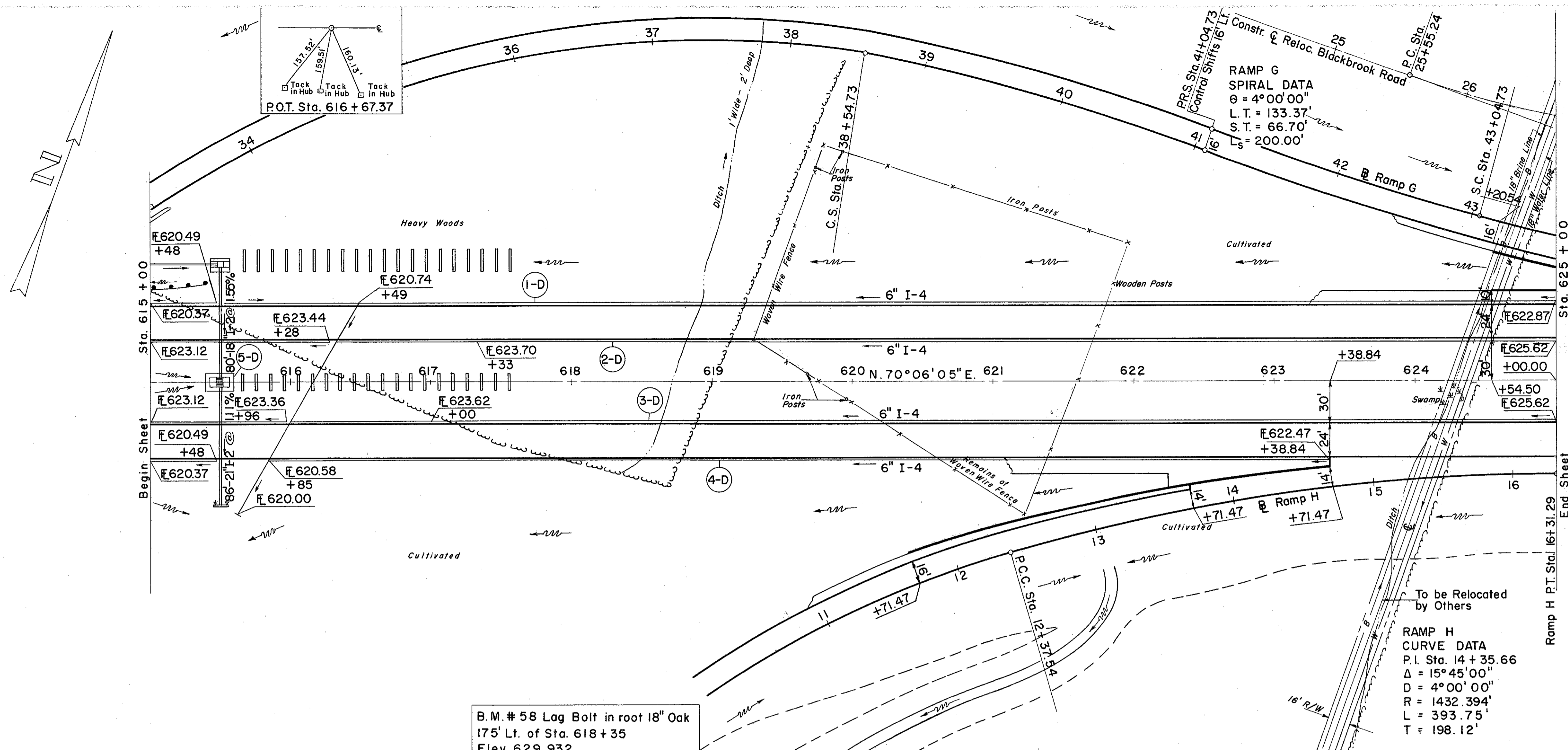
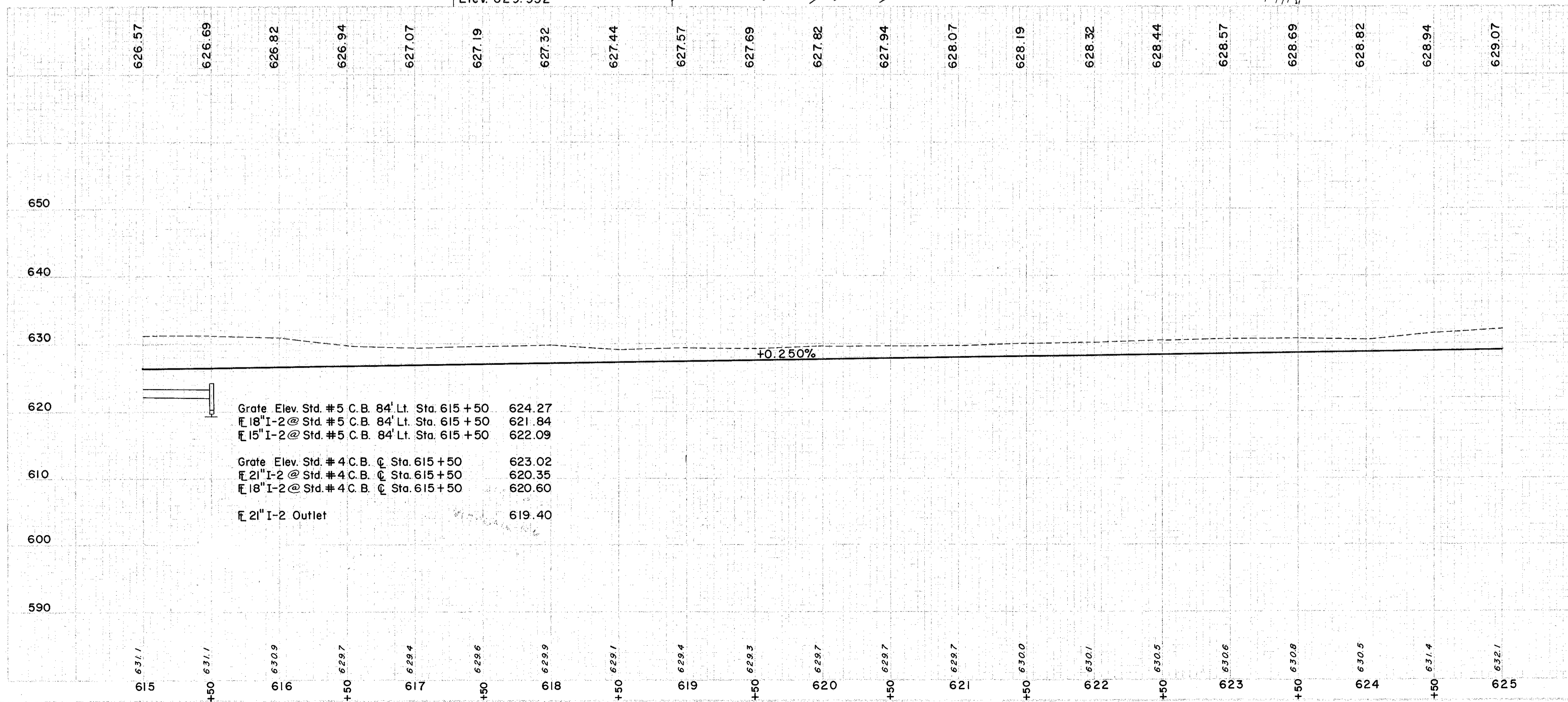


LAKE COUNTY
LAK-2-10.35



B.M. # 58 Lag Bolt in root 18" Oak
175' Lt. of Sta. 618 + 35
Elev. 629.932



(D) DRAINAGE

REF. NO.	STATION	SIDE	EXC. FOR STRUCT. CL "C"	CLASS A STORM SEWER UNDER PAVT. SEC. M-65(b) OR M-65(c)	8" I-2	15" CL. A STM SW/OUTLET PIPE SEC. M-65(c) OR M-65(d)	6" I-4 PIPE UNDER DRAIN DEEP	6" WYE OR M-65(b) OR M-65(b)	STD. #4 CATCH BASIN	STD. #5 CATCH BASIN	L-10 SODDING STRUCT. CLASS	S-1 CONC. FOR REINF. STRUCT. CLASS	S-4
	FROM TO		C.Y.	L.F.	L.F.	L.F.	L.F.	EA	EA	EA	S.Y.	C.Y.	LBS.
1-D	615+00	LT.											
2-D	615+00	LT.											
3-D	615+00	RT.	158	995	10	995							
4-D	615+00	RT.											
5-D	615+50	CL	7	995	49	801					113	4.2	193

Excavation	25,477 C.Y.
Embankment	0 C.Y.
Structures	20 C.Y.