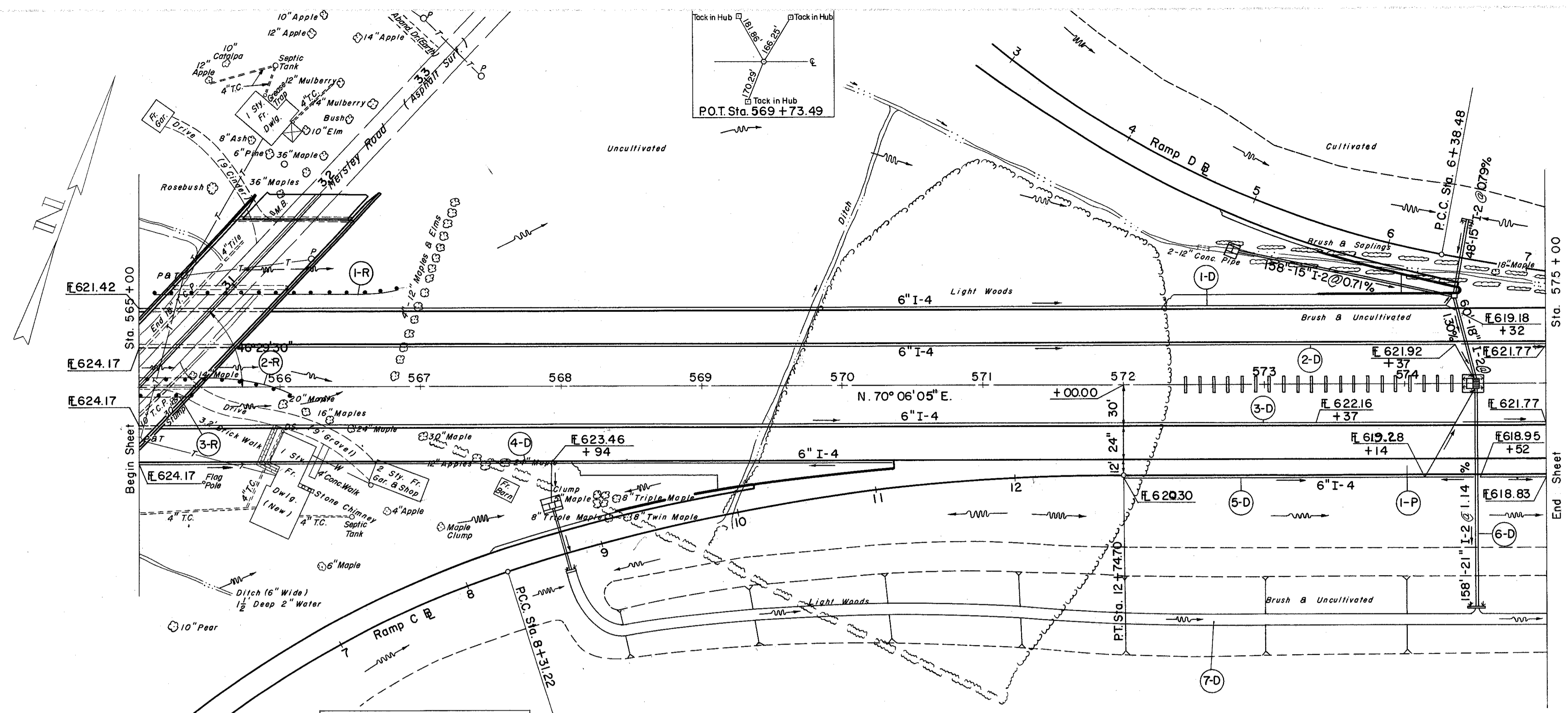
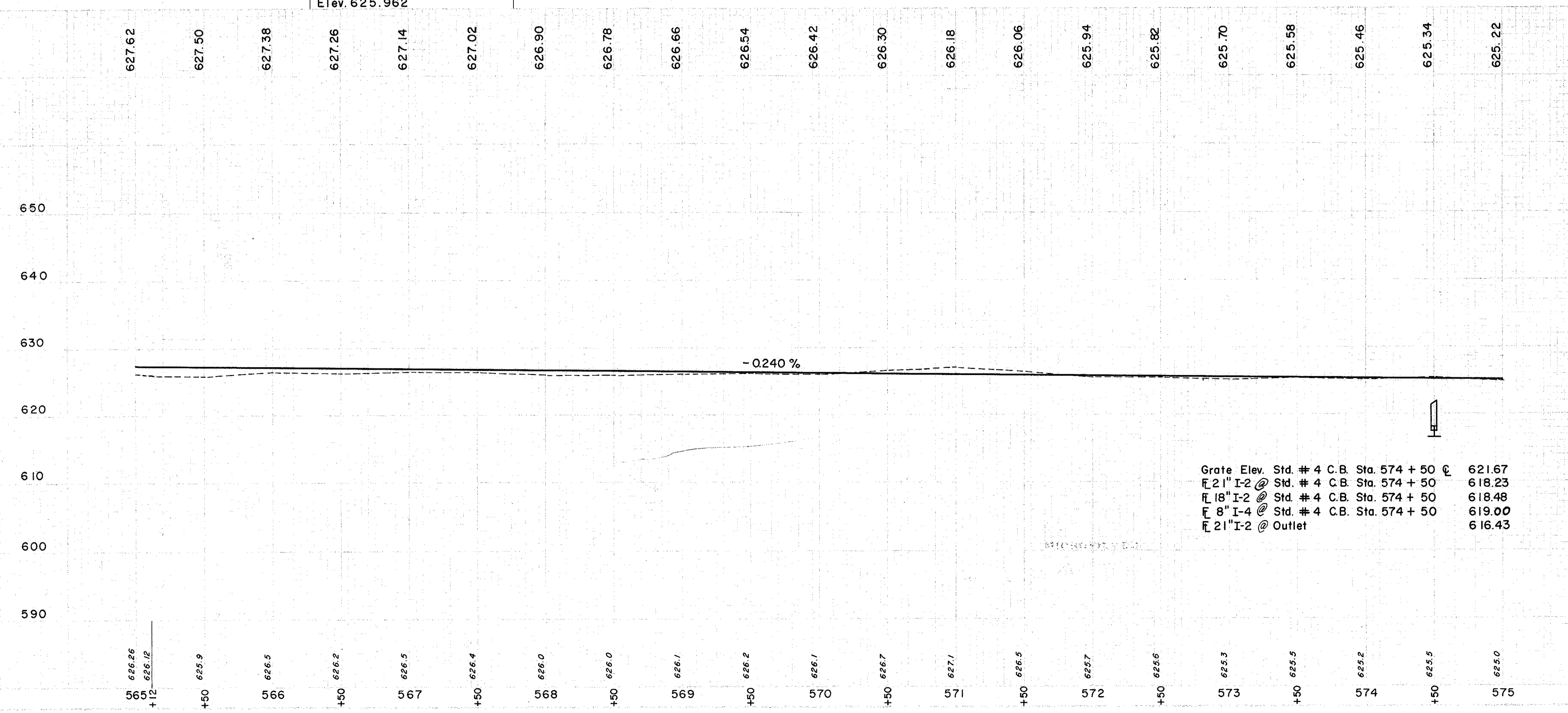


LAKE COUNTY  
LAK-2-10.35



B.M. #52 Lag Bolt in 24" Maple  
300' Lt. of Sta. 567+85  
Elev. 625.962



Grate Elev.	Std. # 4 C.B.	Sta. 574 + 50	621.67
21" I-2 @	Std. # 4 C.B.	Sta. 574 + 50	618.23
18" I-2 @	Std. # 4 C.B.	Sta. 574 + 50	618.48
8" I-4 @	Std. # 4 C.B.	Sta. 574 + 50	619.00
21" I-2 @	Outlet		616.43

(D) DRAINAGE

REF. NO.	STATION	FROM	TO	E-2 EXC. FOR STRUC. & C.Y.	I-2 CLASS "B" S. UNDER PAV'T. UNDER M-6.5(1) OR M-6.8(1)	I-4 8" OUTLET PIPE SEC. UNDER DRAIN PIPE SEC. M-64(C) SHALLOW DEEP	I-5 6" X 8" INCR. 90° BEND	I-8 STD. #4 CATCH BASIN	I-8 STD. #5 CATCH BASIN	I-8 STD. #6 CATCH BASIN	L-10 SODDING STRUC. CLASS C	S-1 CONC. FOR STRUC. CLASS C	S-4 REINF. CHANNEL	E-3 EXC.
I-D	565+00	574+35	LT											
2-D	565+00	575+00	LT											
3-D	565+00	570+37	RT											
4-D	565+00	570+37	RT											
5-D	572+00	575+00	RT	16	62	10								
6-D	574+50													
7-D	574+00	575+00	RT		206									
				TOTAL		934	5							

(R) ROADWAY

REF. NO.	STATION	FROM	TO	I-15 GUARD RAIL	I-15 GUARD RAIL
1-R	565+12	566+87	LT	175	
2-R	564+95.5	566+07	LT	87.5	2.5
3-R	565+00	565+37.5	RT	37.5	
TOTAL				300.0	2.5

(P) PAVEMENT

REF. NO.	STATION	FROM	TO	T-71 10" REINF. CONC. PAVT.	I-22 SUBBASE	E-1 COMP. SUB-GRADE
I-P	572+00	575+00	RT	400	66.67	400

MICROFILMED  
JUL 1 1967

CLEANING	9603 C.Y.
EMBANKMENT	1265 C.Y.
PAVEMENT	20
1518 C.Y.	

Traced T.A.S. 11-14-57