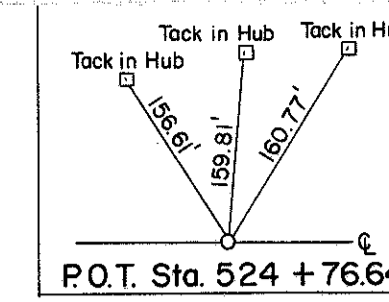
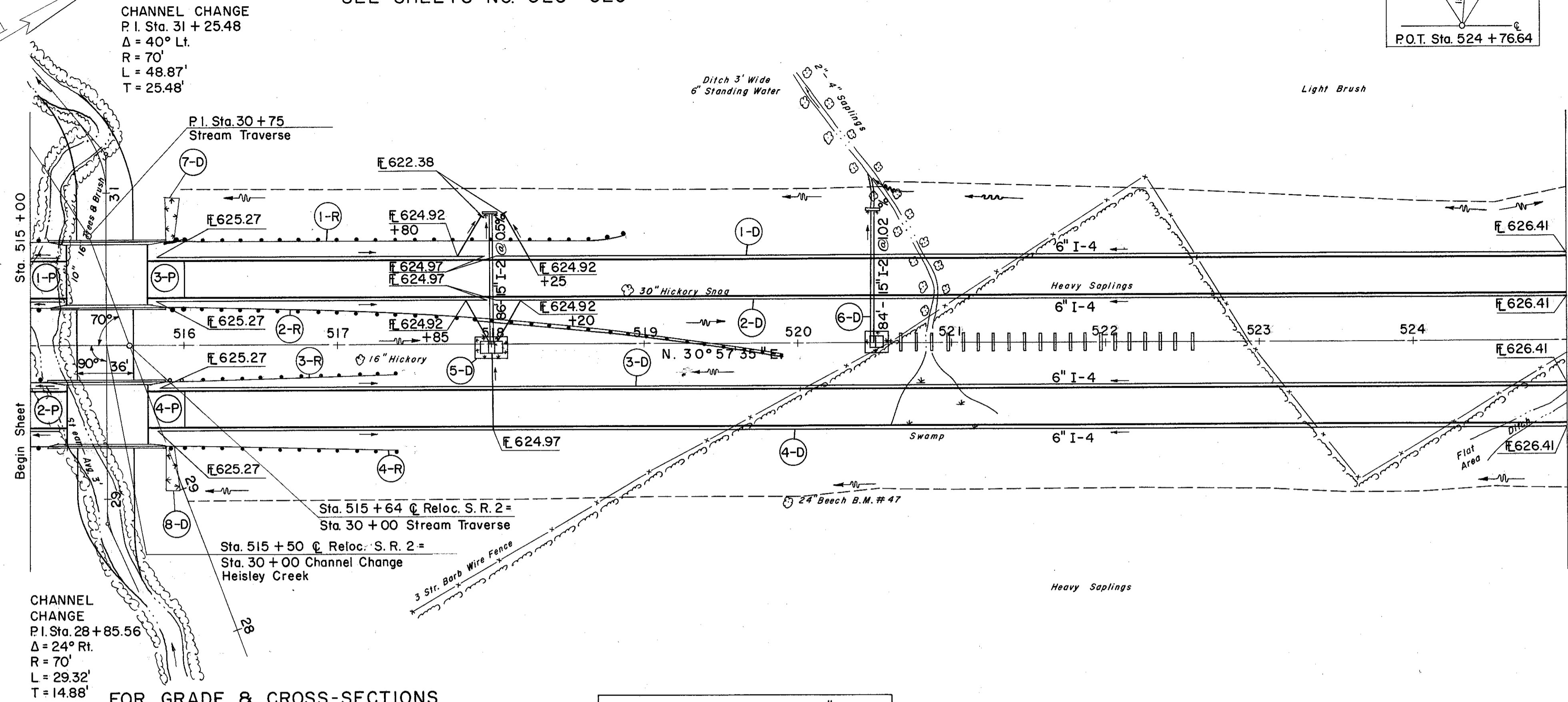


FOR DETAILS OF STRUCTURE NO. LAK-2-1165
SEE SHEETS NO. 325 - 329



PROPOSED STRUCTURE
TYPE: Two 3 Span Continuous Concrete Slab and Pile Bents
SPANS: 16'-0", 20'-0", 16'-0" c/c Bearings
ROADWAY: Two 22'-0" f/f Parapets
LOAD FREQUENCY: C.F. 2000 Adequate for AASHTO Alternate Loading
SKEW: 0°00'00"
WEARING SURFACE: 1" Monolithic Concrete
APPROACH SLAB: AS-1-54 (25'-0" Long)
ALIGNMENT: Tangent

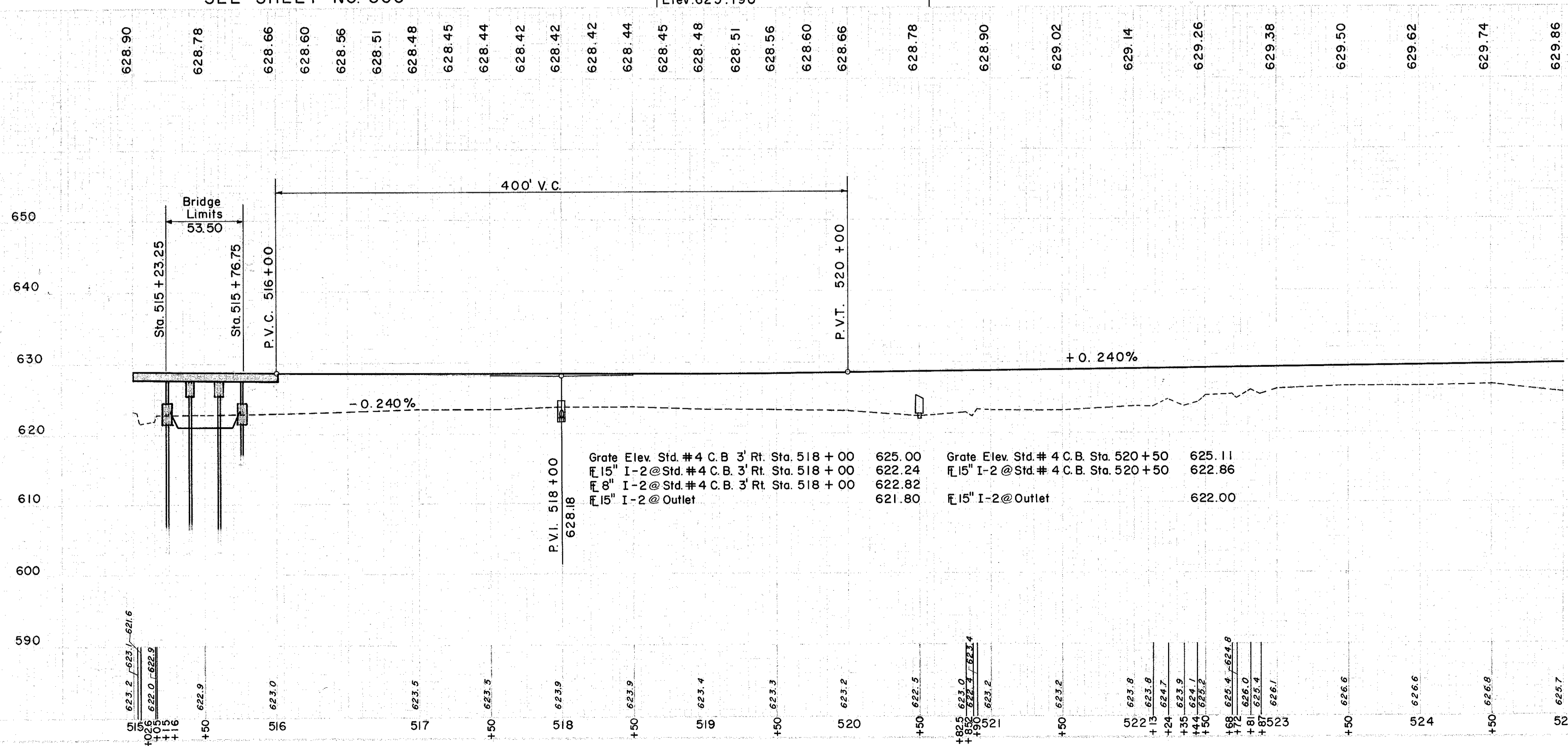
LAKE COUNTY
LAK-2-10.35



CHANNEL CHANGE
P.I. Sta. 28 + 85.56
Δ = 24° Rt.
R = 70'
L = 29.32'
T = 14.88'

FOR GRADE & CROSS-SECTIONS
HEISLEY CREEK
SEE SHEET NO. 300

B.M. # 47 Lag Bolt in root of 30" Beech
150' Rt. of Sta. 519 + 83
Elev. 625.190



REF. NO.	STATION	SIDE	CL. "A" SEWER UNDER OUTLET PIPE PAVT. SEC. M-65(b) OR M-68(b)	CL. "A" STORM UNDER OUTLET PIPE SEC. M-64(c) SHALLOW M-64(g)	6" TEE INCREASE	6" INCREASE	6" DOUBLE TEE SEC. OR M-68(b)	6" WYE	I-8 STD. # 4 CATCH BASIN	S-1 CONC. FOR STRUCT. CL. "C"	S-4 REINF. STEEL	E-2 EXC. FOR STRUCT.	L-10 SODDING FOR SP. BERM & SLOPE PROTECT.
1-D	516+08	LT	930	20									
2-D	516+08	RT	922	20									
3-D	516+08	RT	890										
4-D	516+08	RT	10										
5-D	518+00	Q	86										
6-D	520+50	Q	84										
7-D	515+92	LT											
8-D	515+92	RT											
9-D	515+50	Q											
TOTALS			200	800									

REF. NO.	STATION	SIDE	RAIL GUARD-R15 GUARD RAIL STEEL RAIL BEAM BARRIER STD. TYPE (DEEP)	TYPE (DEEP)	TOTALS
1-R	515+89	LT	300		
2-R	515+89	RT	200		
3-R	515+89	RT	150		
4-R	515+89	RT	150		
TOTALS			200	800	

REF. NO.	STATION	SIDE	REINF. CONC. APPR. SLAB (1-13)	S.Y.
1-P	515+89	LT	66.67	
2-P	515+89	RT	66.67	
3-P	515+89	RT	66.67	
4-P	515+89	RT	66.67	
TOTALS			266.68	

EXCAVATION	672 C.Y.
FINISHMENT	20,289 C.Y.
EMBANKMENT	24,347 C.Y.

MICROFILMED
1 1985