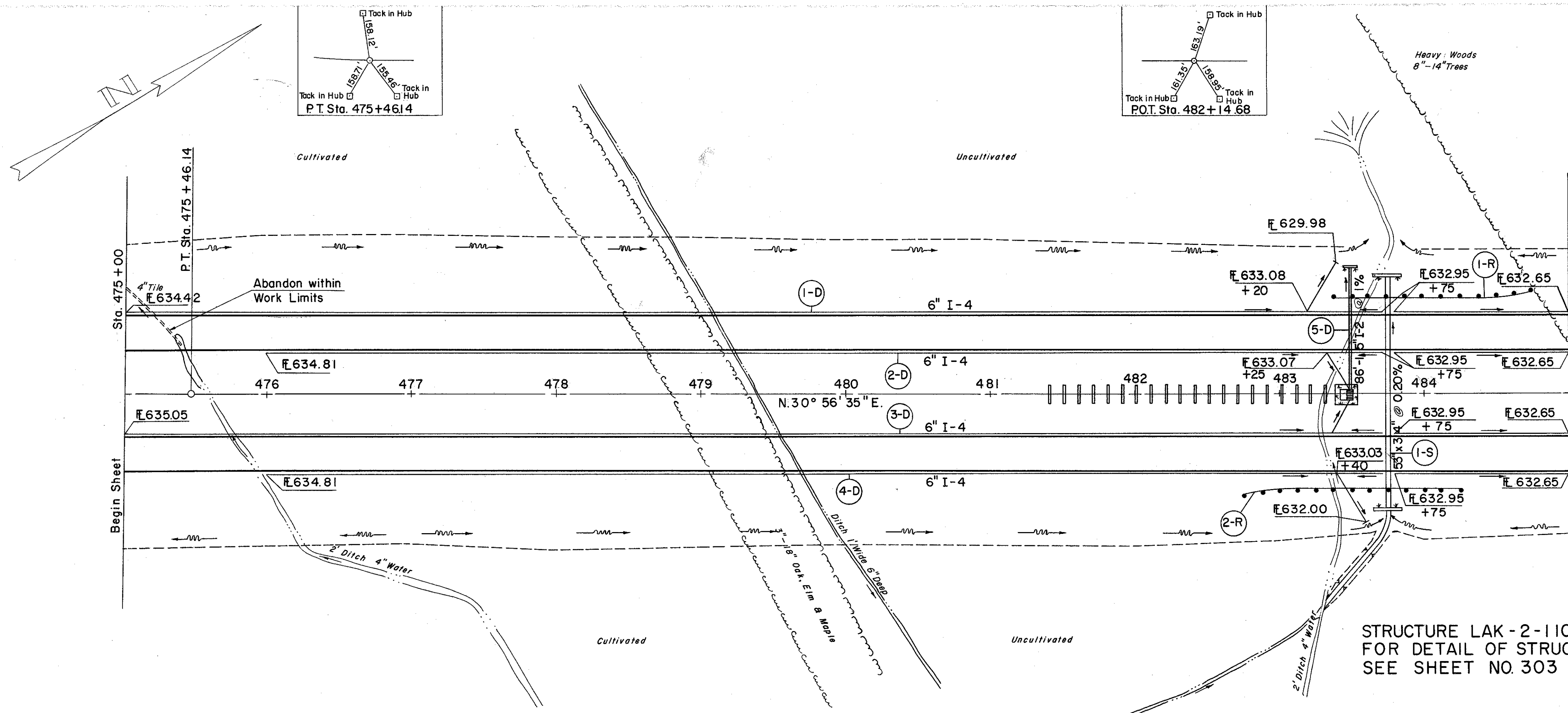


LAKE COUNTY  
LAK-2-1035



D DRAINAGE

REF. NO.	STATION	SIDE	CL. A STORM SEWER UNDER PAVT. SEC. OR M-6.8(b) OR M-6.5(b)	8" PIPE UNDER-DRAIN	6" PIPE UNDER-DRAIN	60° WYE	I-2	I-4	I-5	I-8	S-1	S-4	E-2	L-10
1-D	475+00	485+00	LT.											
2-D	476+00	485+00	LT.	10	1023									
3-D	475+00	485+00	RT.	10	914									
4-D	476+00	485+00	RT.	10	1014									
5-D	483+50		CL.	86	10	924					3.1	146	6	57

S STRUCTURES

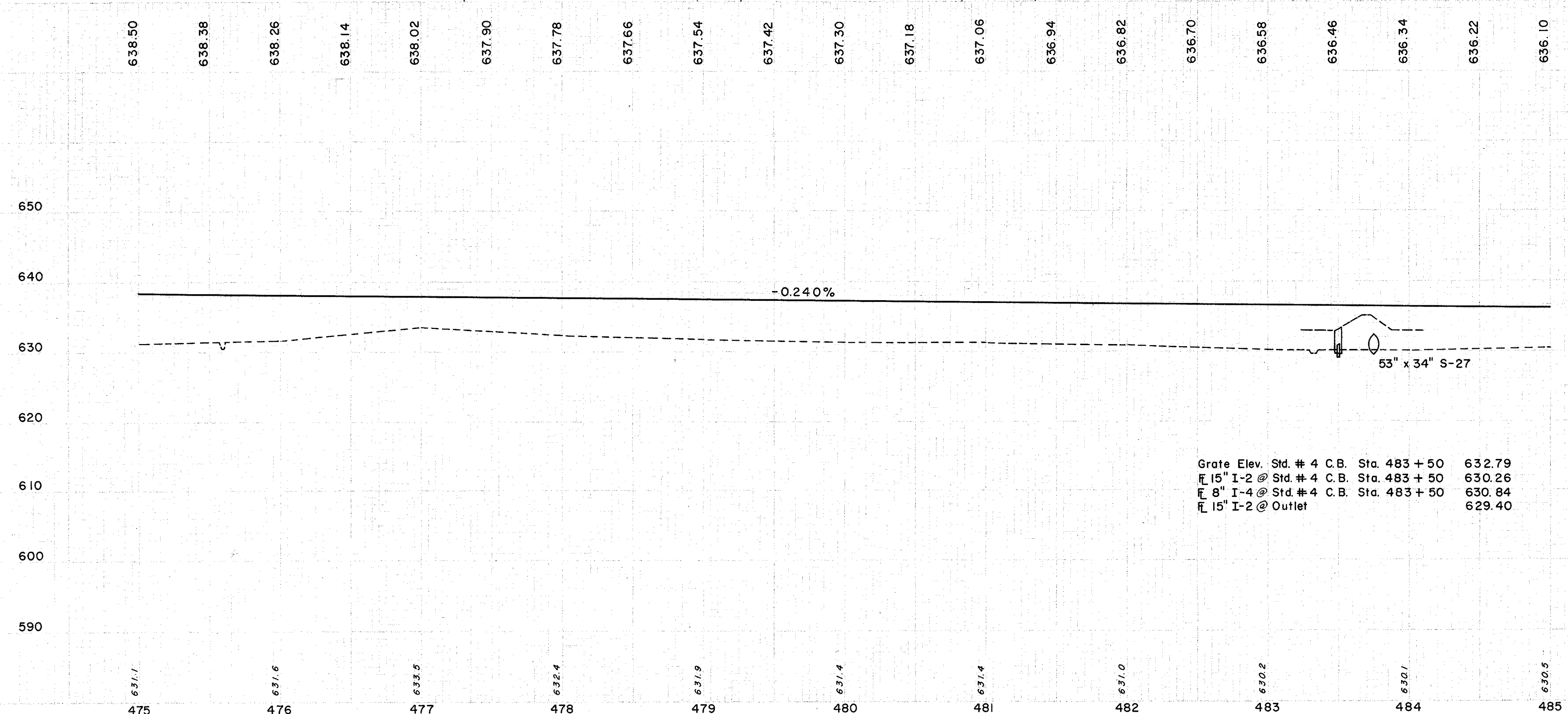
REF. NO.	STATION	SIDE	EXC. FOR STRUCT.	E-2	E-3	L-10	S-1	S-4	S-27
1-S	483+75		114	6	9	234	738	164	

R ROADWAY

REF. NO.	STATION	SIDE	I-15 GUARD RAIL STEEL BEAM STD. TYPE (DEEP)	
				L.F.
1-R	483+37.5	484+75	LT.	137.5
2-R	482+75	484+12.5	RT.	137.5
TOTAL				275

STRUCTURE LAK-2-1106  
FOR DETAIL OF STRUCTURE  
SEE SHEET NO. 303

- B.M. # 40 Lag Bolt in root of 18" Oak  
400' Rt. of Sta. 478+25  
Elev. 633.218
- B.M. # 40A Lag Bolt in 12" Oak  
150' Rt. of Sta. 480+00  
Elev. 633.008
- B.M. # 42A Lag Bolt in root of 14" Oak  
150' Lt. of Sta. 484+25  
Elev. 630.443
- B.M. # 41 Lag Bolt in root of 18" Maple  
1500' Rt. of Sta. 484+50  
Elev. 634.048



Grate Elev. Std. # 4 C.B. Sta. 483+50	632.79
15" I-2 @ Std. # 4 C.B. Sta. 483+50	630.26
8" I-4 @ Std. # 4 C.B. Sta. 483+50	630.84
15" I-2 @ Outlet	629.40

Excavation	1,196 C.Y.
Embankment	28,047 C.Y.
Embankment 20'	33,656 C.Y.