

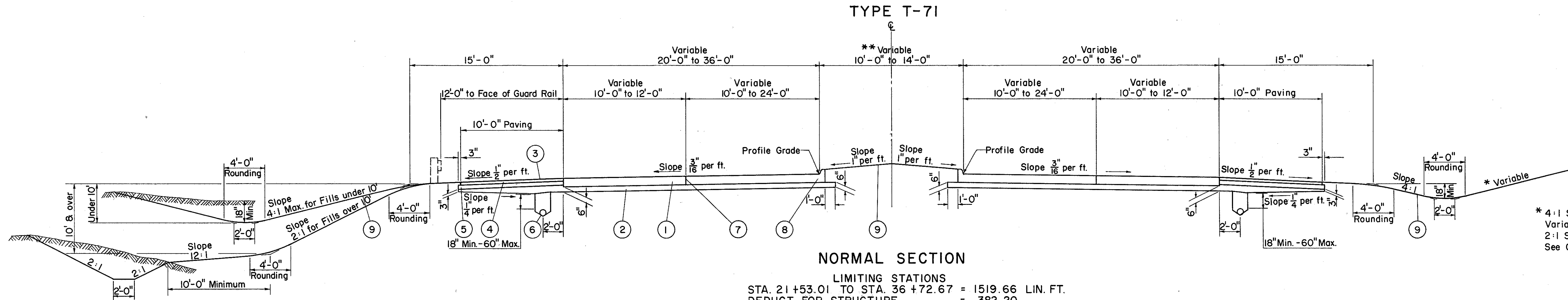
TYPICAL SECTIONS

FED. RD. DIVISION	STATE	PROJECT
2	OHIO	

4
379

HEISLEY ROAD

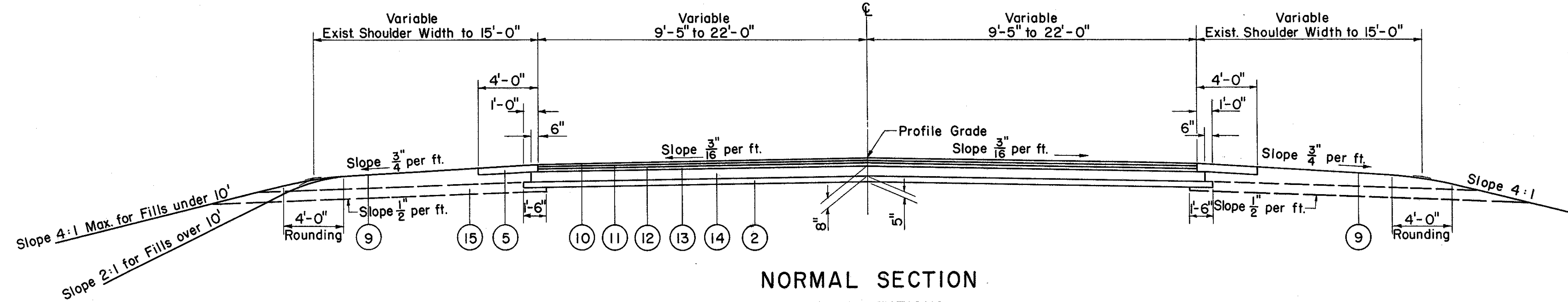
LAKE COUNTY
LAK-2-10.35



NORMAL SECTION

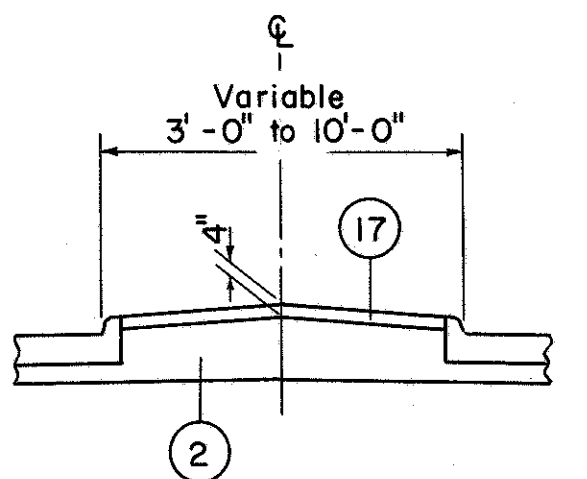
LIMITING STATIONS
STA. 21+53.01 TO STA. 36+72.67 = 1519.66 LIN. FT.
DEDUCT FOR STRUCTURE = 382.20
TOTAL NET LENGTH = 1137.46 LIN. FT.

TYPE T-35



NORMAL SECTION

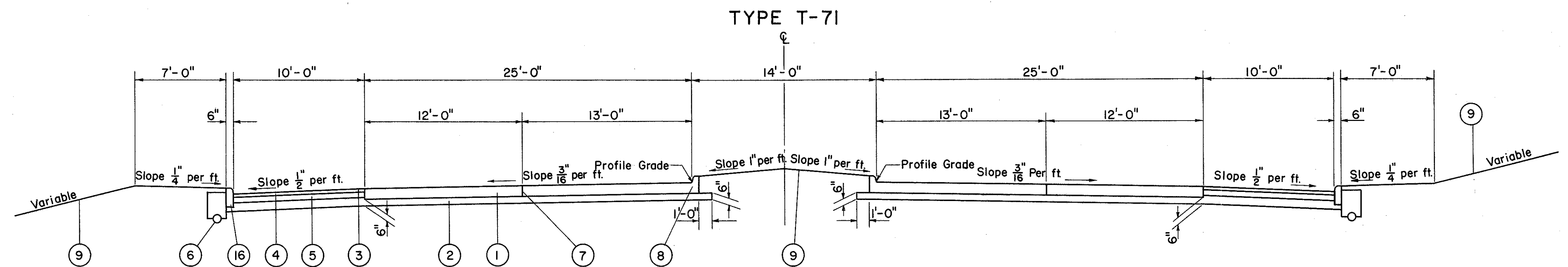
LIMITING STATIONS
STA. 19+25.00 TO STA. 21+53.01 = 228.01 LIN. FT.



**Median Detail when Width is 3' to 10'

LEGEND

- ① T-71 10" Reinforced Portland Cement Concrete Pavement.
- ② I-22 Variable Subbase, Grading A or B, as per plan
- ③ T-31 Bituminous Surface Treatment. (See Note in Proposal)
- ④ B-219 3" Waterproofed Aggregate Base Course.
- ⑤ I-18 5" Stabilized Crushed Aggregate Shoulders & Approaches.
- ⑥ I-4 6" Pipe Underdrain.
- ⑦ Standard Longitudinal Joint.
- ⑧ I-12 Concrete Curb, Standard Type 2-A
- ⑨ L-9 Seeding and Protecting Roadway Areas.
- ⑩ T-35 1 1/2" Asphaltic Concrete Surface Course, Type A (70-85).
- ⑪ B-35 1 1/2" Asphaltic Concrete Leveling Course (70-85).
- ⑫ B-35 2 3/4" Asphaltic Concrete Base Course (70-85).
- ⑬ T-30 Bituminous Prime Coat - Sec. M-5.7, RT-2 or RT-3 Applied at Rate of 0.40 Gal. per S. Y.
- ⑭ B-19 8" Aggregate Base Course
- ⑮ I-9 Stone Underdrain No. 2.
- ⑯ I-12 Concrete Curb, Standard Type 6
- ⑰ I-21 Standard Type I Portland Cement Concrete Median Pavement, 4" Thick



NORMAL SECTION

LIMITING STATIONS
STA. 36+72.67 TO STA. 37+00.00 = 27.33 LIN. FT.