

# LIGHT POLE DETAILS

FED. RD. DIVISION	STATE	PROJECT
2	OHIO	

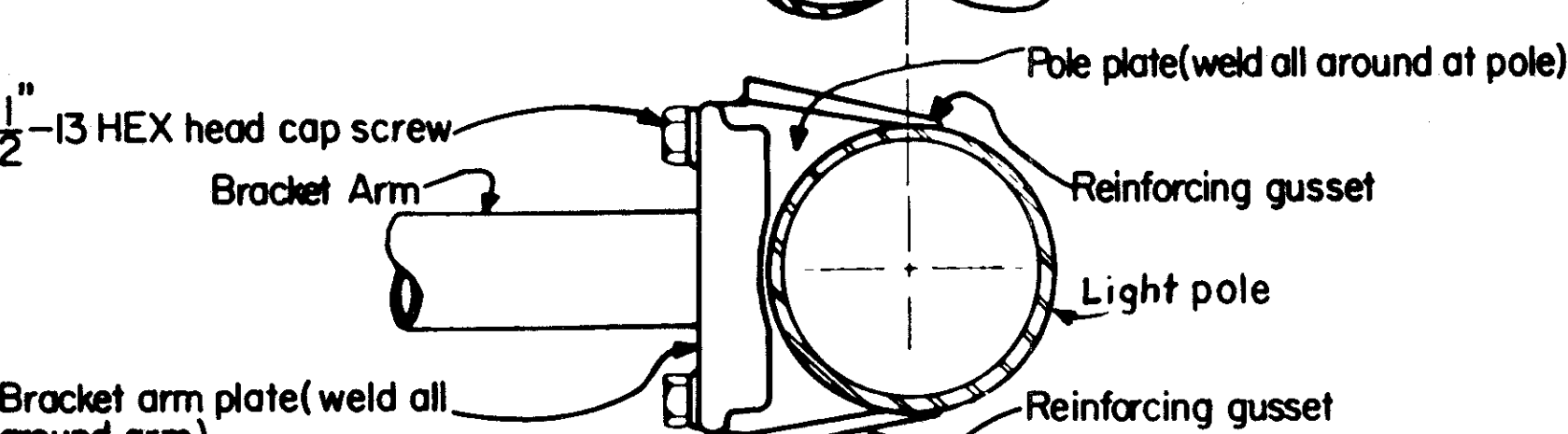
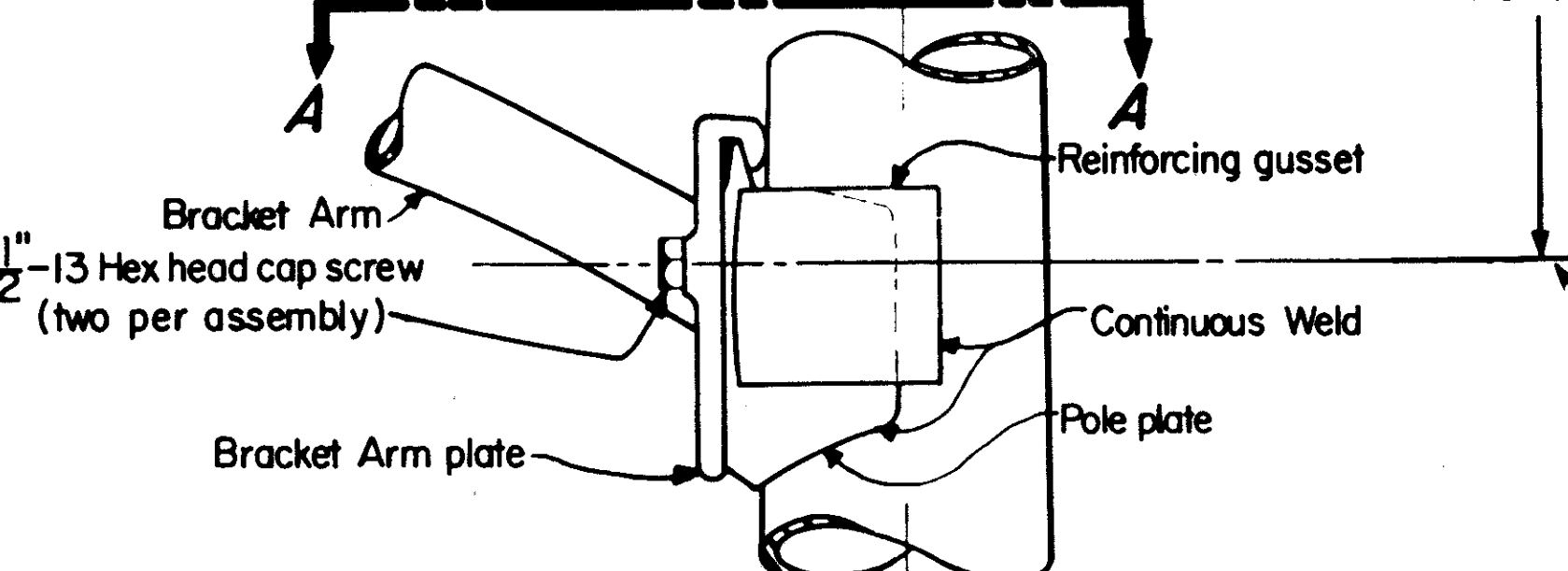
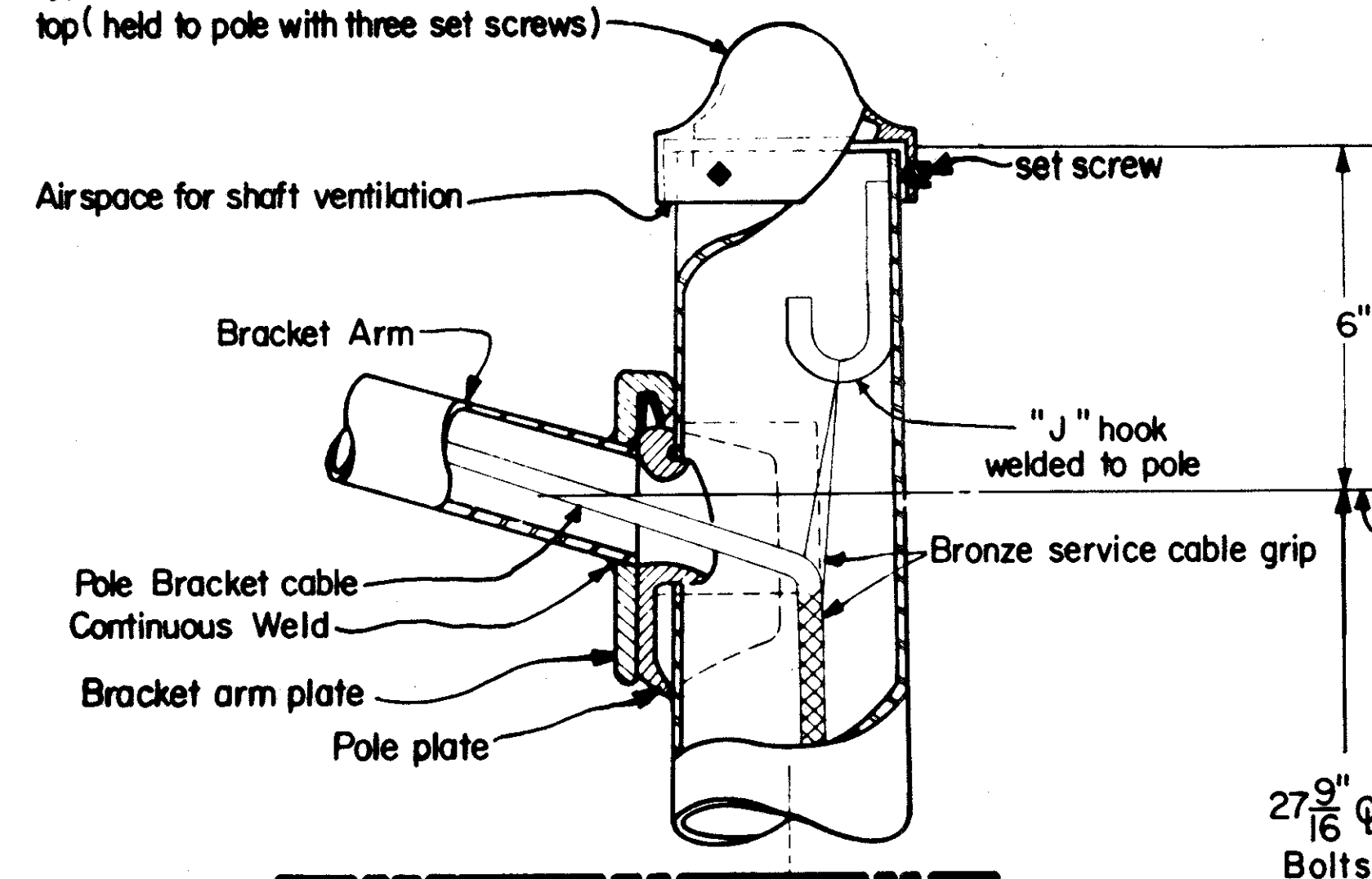
34  
57

LAKE COUNTY  
LAK-2-1.80

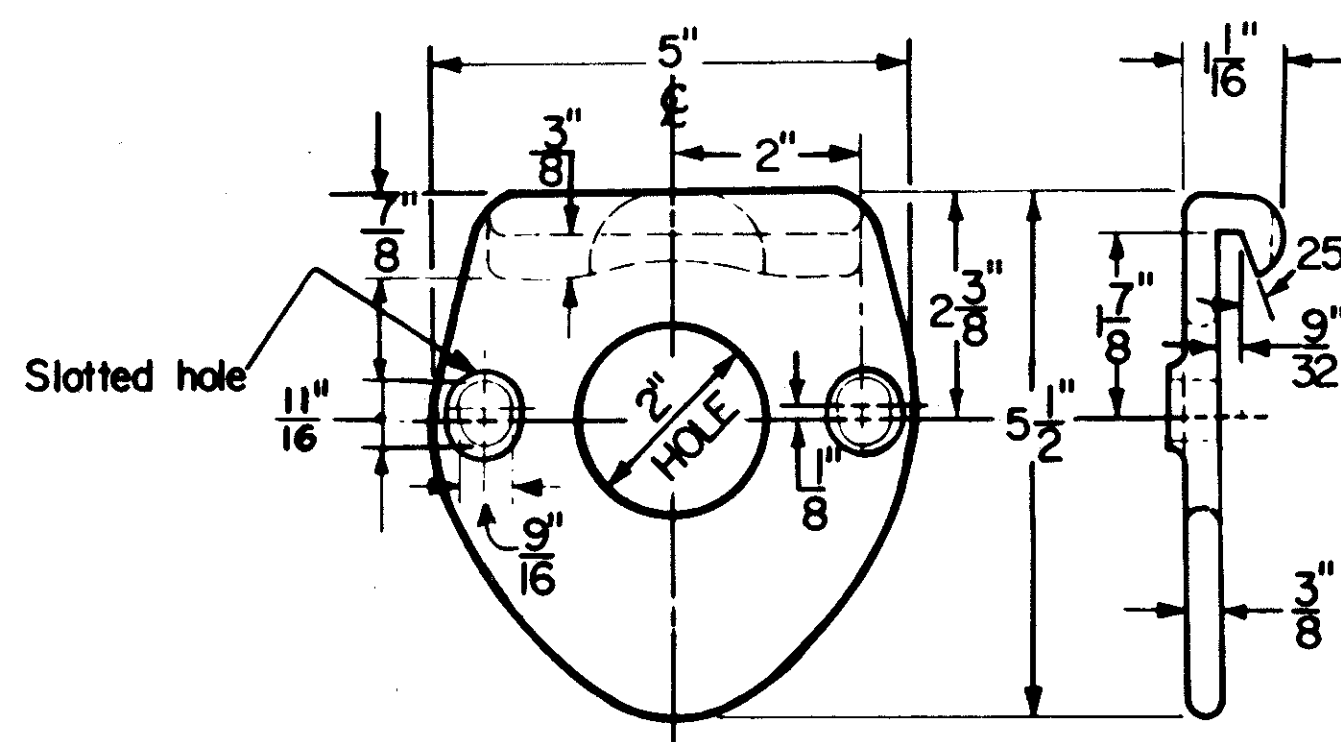
## NOTES

1. Hand holes shall be provided on all poles not mounted on transformer bases.
2. Hand holes shall be opposite the roadway unless such location renders them inaccessible. (See NOTE 6)
3. Use of Reinforcing gussets is optional.
4. Circuit and light pole numbers shall be as scheduled on light plan sheets. Labels shall meet the requirements of 713.18 and shall contain 3 series "B" letters and numbers as per the "Standard Alphabets for Highway Signs" published by the Bureau of Public Roads.
5. Hand holes for bridge poles shall be on roadway side and 17" from center of hand hole to bottom of base.
6. All light poles mounted on raised concrete median barriers shall be equipped with handholes. Handholes shall be located beneath the bracket arm extending over the Northbound or Westbound traffic lanes.

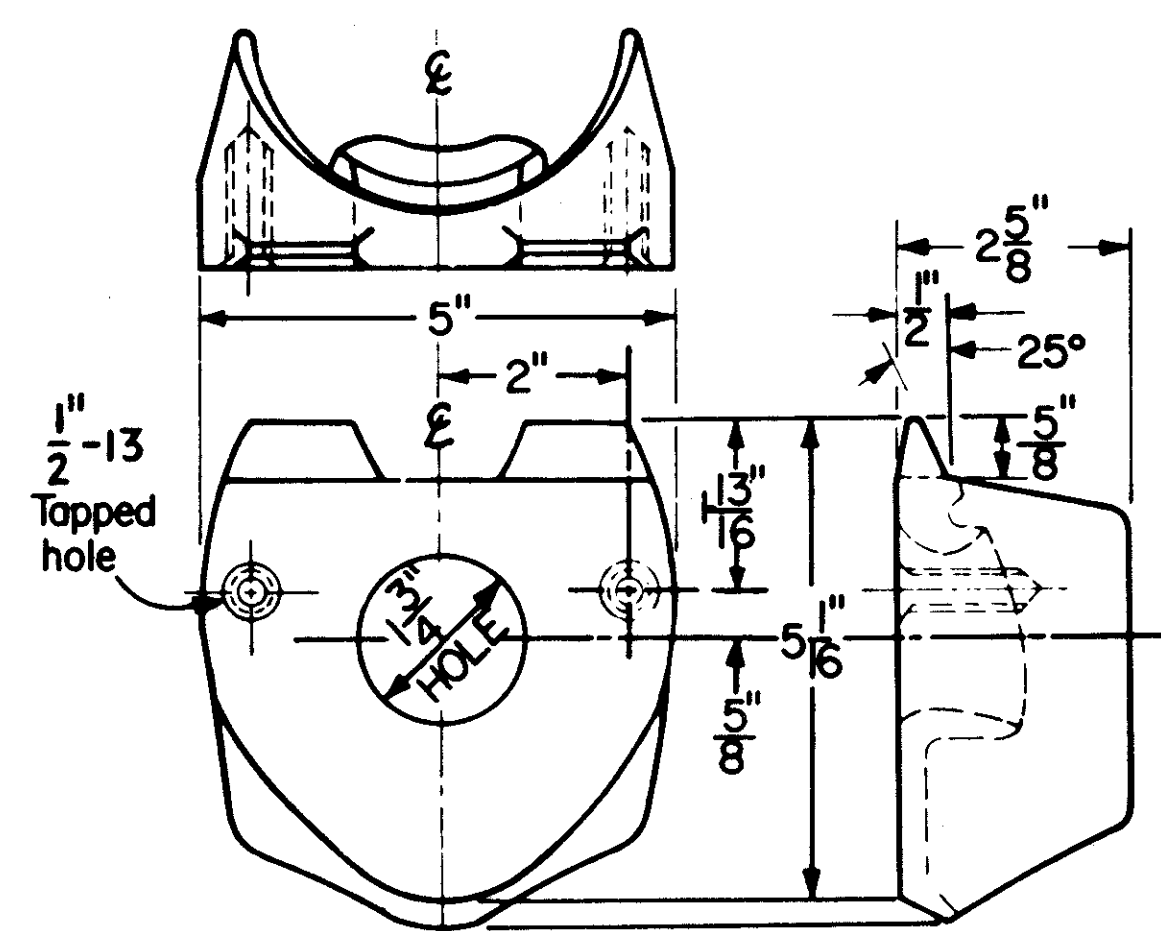
Typical cast iron or malleable steel pole top (held to pole with three set screws)



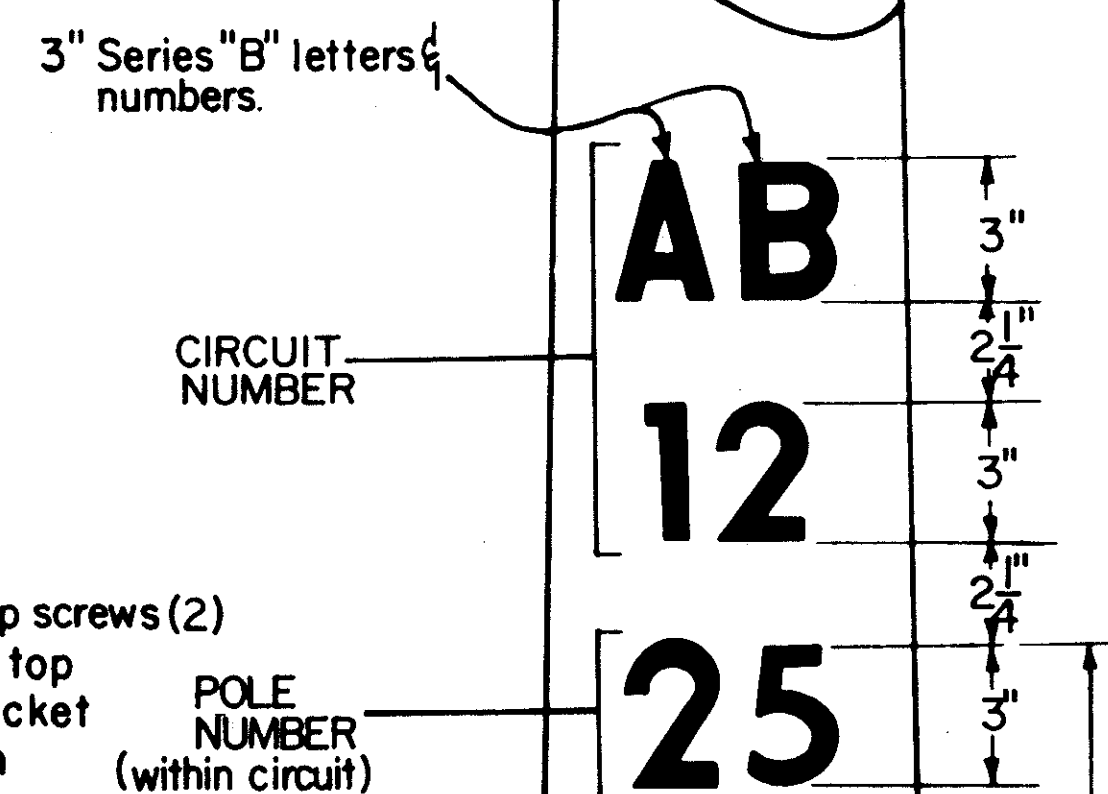
SECTION A-A  
POLE TOP and BRACKET ARM ASSEMBLIES



BRACKET ARM PLATE  
(CAST STEEL)

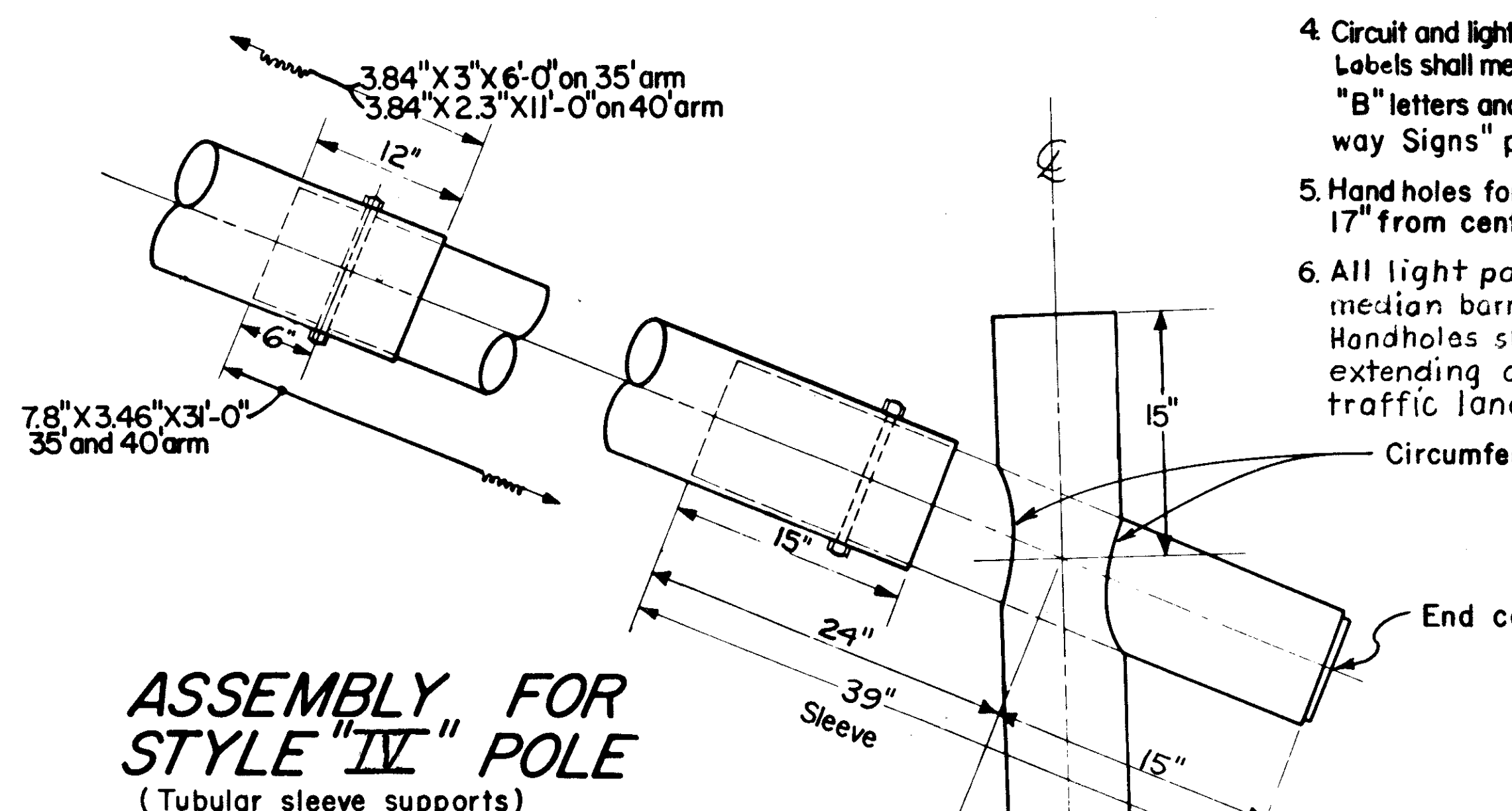


POLE PLATE  
(CAST STEEL)

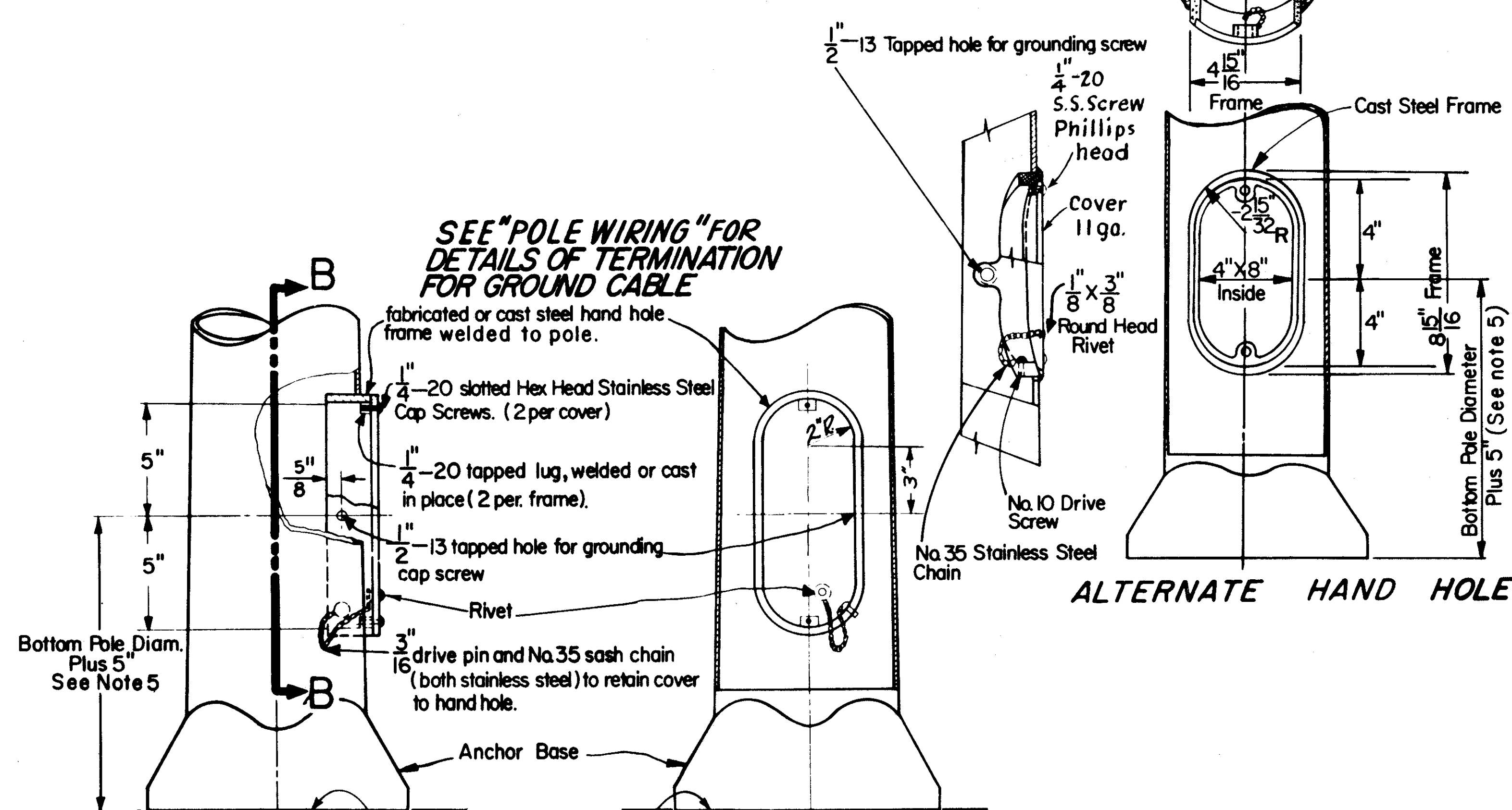


LIGHT POLE LABELS FOR CIRCUIT IDENTIFICATION  
(See note 4)

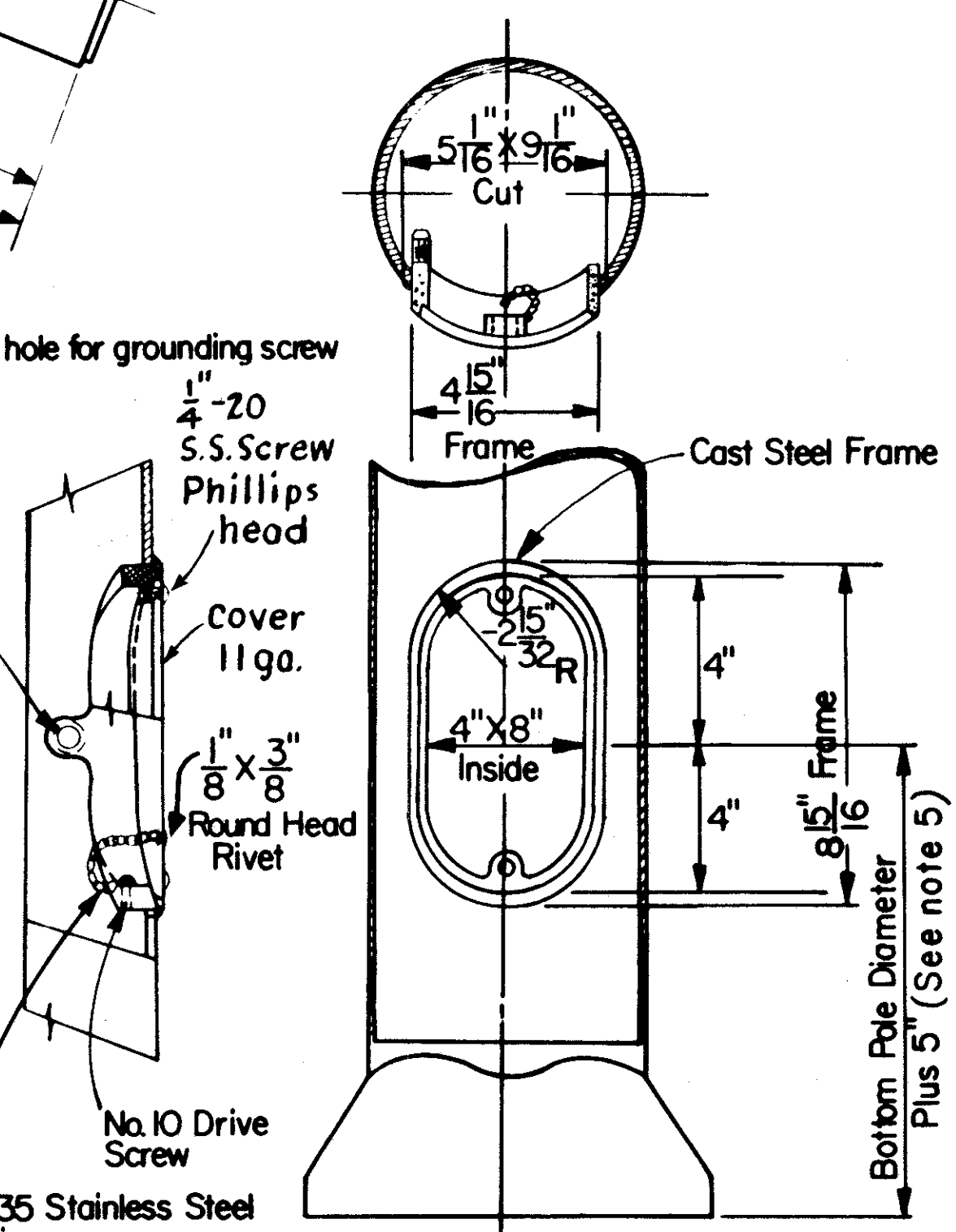
APPROX 7" to base of pole



ASSEMBLY FOR STYLE "IV" POLE  
(Tubular sleeve supports)



SECTION B-B  
HAND HOLE WITH COVER  
See Notes 1 & 2



ALTERNATE HAND HOLE

C-A-GC  
4-B-D-GB