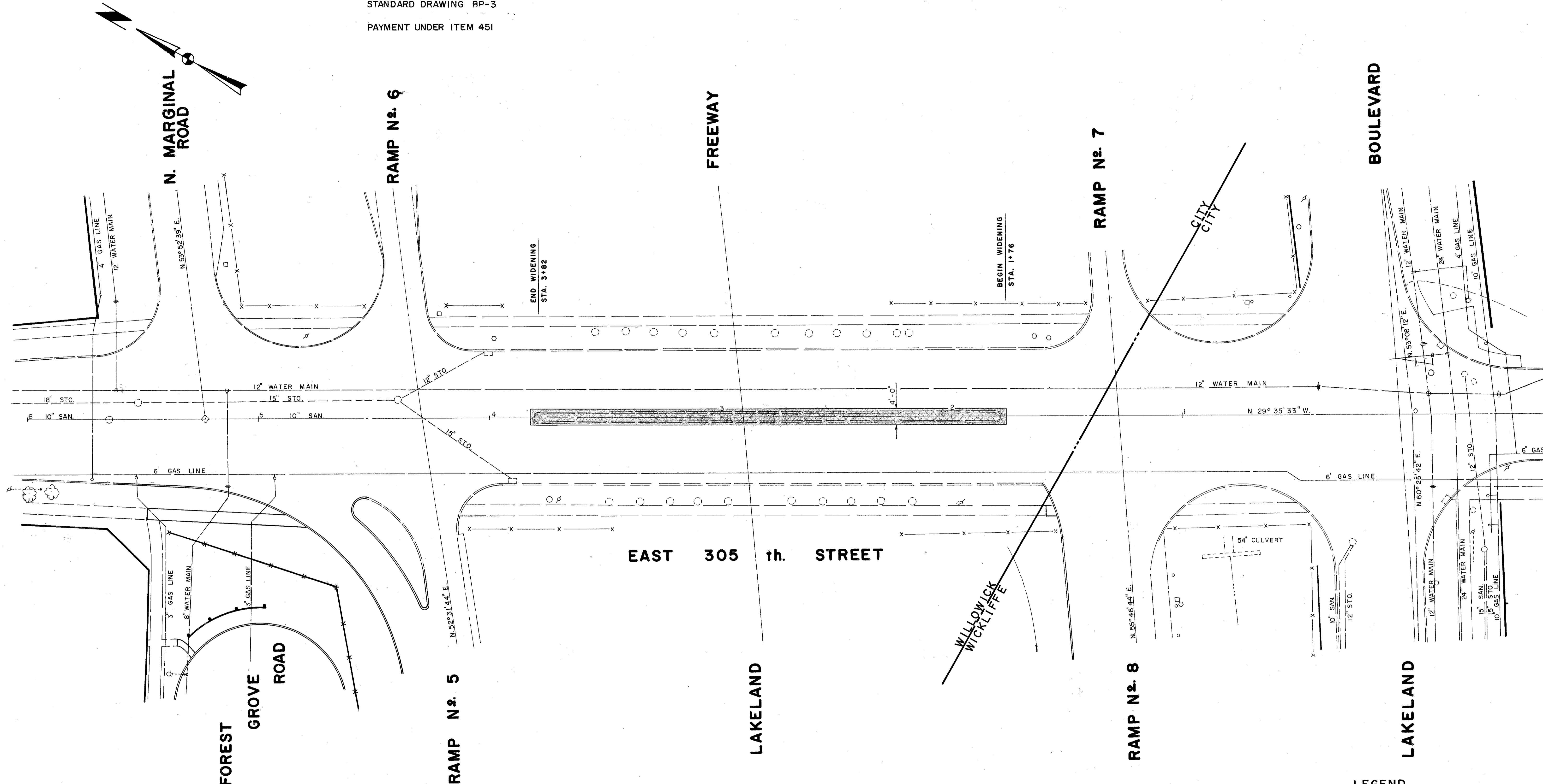


NOTE:
FOR EXPANSION BOLT REFERENCE SEE
STANDARD DRAWING RP-3
PAYMENT UNDER ITEM 451



LEGEND

- NEW CONCRETE PAVEMENT
- EXISTING CONCRETE MEDIAN TO BE REMOVED

LAKELAND FREEWAY & E. 305th. ST. INTERCHANGE

EAST 305 th. STREET