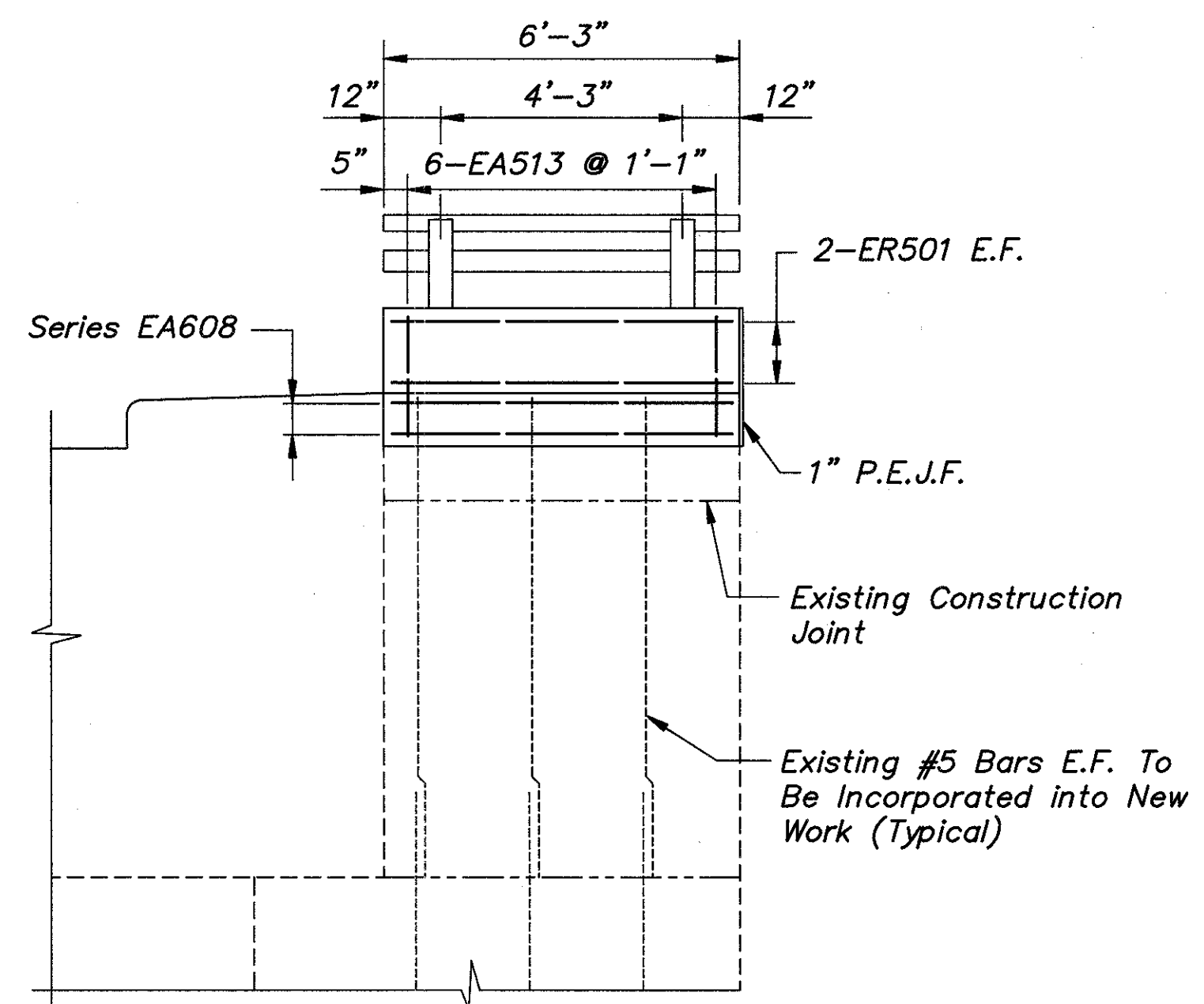


REINFORCING STEEL BAR SCHEDULE

REAR ABUTMENT BACKWALL - PHASE I											REAR ABUTMENT BACKWALL - PHASE II												
MARK	NO. REQUIRED			LENGTH	TYPE	A	B	C	D	H	WEIGHT (LBS)	MARK	NO. REQUIRED			LENGTH	TYPE	A	B	C	D	H	WEIGHT (LBS)
			TOTAL												TOTAL								
EA501		10		30'-0"	STR						313	EA501		10		30'-0"	STR						313
EA502		5		4'-10"	STR						25	EA505		1		10'-6"	5	2'-7 1/2"	8'-0"				11
EA503		5		4'-0"	STR						21	EA506		5		8'-2"	STR						43
EA504		10		2'-0"	STR						21	EA507		5		7'-4"	STR						38
EA505		2		10'-6"	5	2'-7 1/2"	8'-0"				22	EA508		1		9'-5"	5	2'-7 1/2"	6'-11"				10
EA509		7		8'-5"	6		8"	7'-4"	8"		61	EA511		7		7'-9"	6		8"	6'-8"	8"		57
EA510		7		7'-6"	STR						55	EA512		7		6'-10"	STR						50
EA513		6		5'-7"	11	2'-2"	8"				35	EA513		4		5'-7"	11	2'-2"	8"				23
EA601		31		5'-4"	STR						248	EA601		28		5'-4"	STR						224
EA602		2		7'-1"	STR						21	EA603		28		6'-6"	STR						273
EA603		31		6'-6"	STR						303	EA605		28		4'-3"	6		1'-10"	11"	1'-10"		179
EA604		3		6'-10"	STR						31	EA606		9		6'-11"	STR						94
EA605		31		4'-3"	6		1'-10"	11"	1'-10"		198	EA607		9		6'-8"	STR						90
EA608	2 Series of 5			5'-6"	STR					Vary by 1'-2 1/2"	119	EA609	2 Series of 5			5'-0"	STR				Vary by 11 1/2"		104
EA610		1		3'-6"	STR						5				8'-10"								
ED801		18		5'-2"	8	12"	2'-10"				248	ED801		18		5'-2"	8	12"	2'-10"				248
TOTAL = 1,726 LBS.											TOTAL = 1,757 LBS.												
REAR ABUTMENT TOTAL WEIGHT = 3,483 LBS.																							
RAILING*											RAILING*												
ER501		4		5'-11"	STR							ER502		4		8'-11"	STR						
												ER503		2		8'-3"	6		3'-2"	4'-8"	8"		
												ER504		4		7'-7"	11		3'-2"	8"			
												ER505		2		6'-7"	68						
												ER506		2		4'-8"	STR						
												ER507		4		3'-3"	45		1'-3"	9 1/2"			

VIEW C-C  
See Drawing BR-2-82 for Additional Details



VIEW D-D

Notes: 1) All Dimensions Are Out To Out Of Bars.  
 2) All Reinforcing Bars Shall be Epoxy Coated

\*Railing Reinforcement Bars will be Included as Part of Item 517 for Payment

For Locations for View C-C and D-D See Sheet 10/21

Notation: E.F.-Each Face

**COLPETZER-THOMAS, INC.**  
 AN ENGINEERING GROUP  
 WILLOUGHBY • MENTOR • NORTH CANTON • STEUBENVILLE • LORAIN 11/21

**REAR ABUTMENT BACKWALL REINFORCING SCHEDULE AND VIEWS**  
 LAK-615-0402  
 LAKE COUNTY

DESIGNED	DRAWN	TRACED	CHECKED	REVIEWED	DATE	REVISED
JPR	R.L.B.	R.L.B.	RJC	JEA	9-22-88	