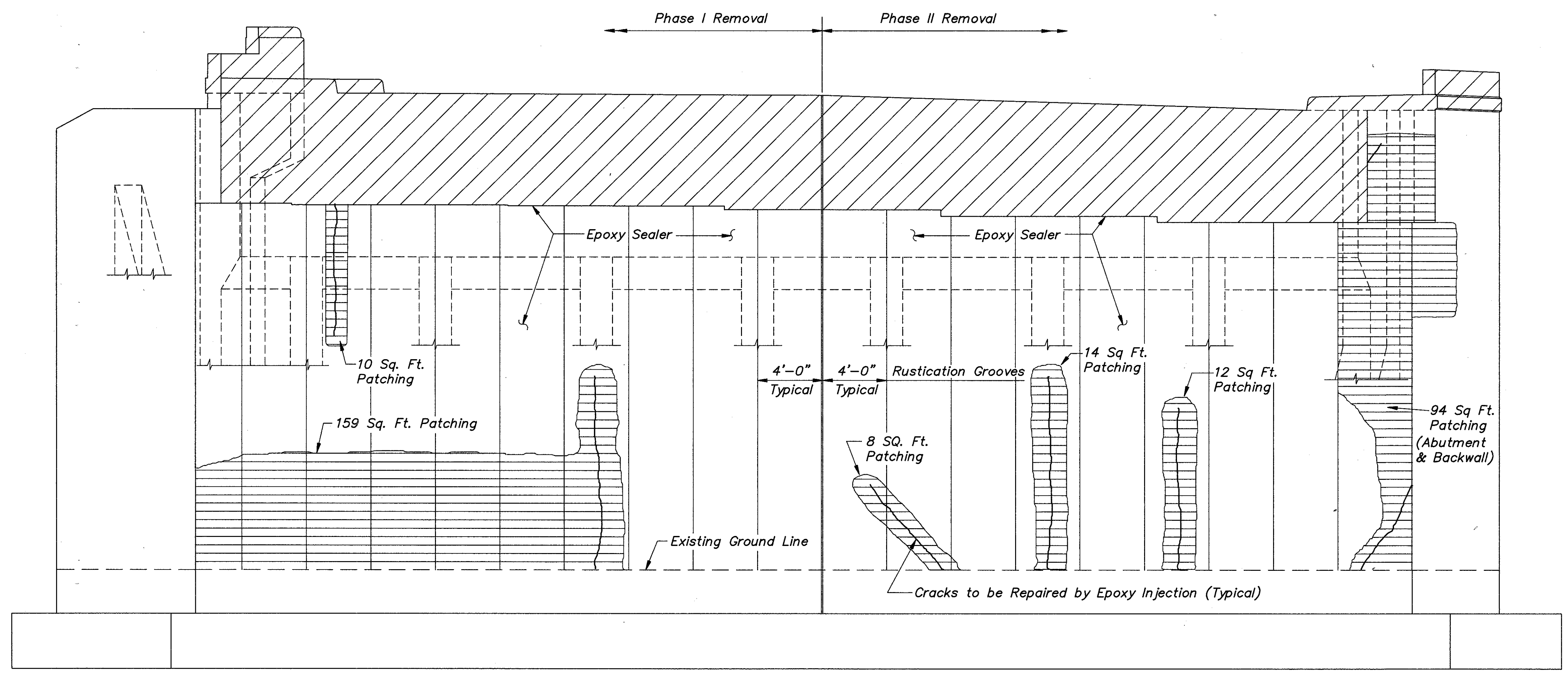
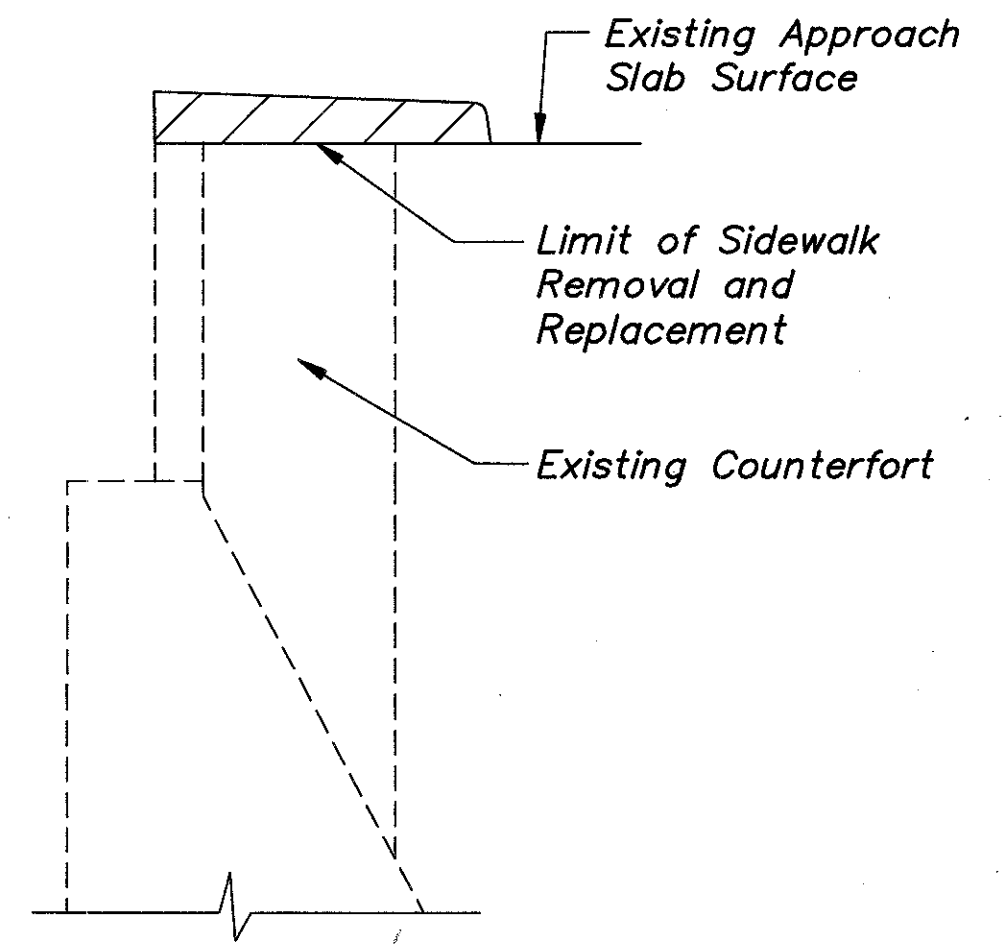
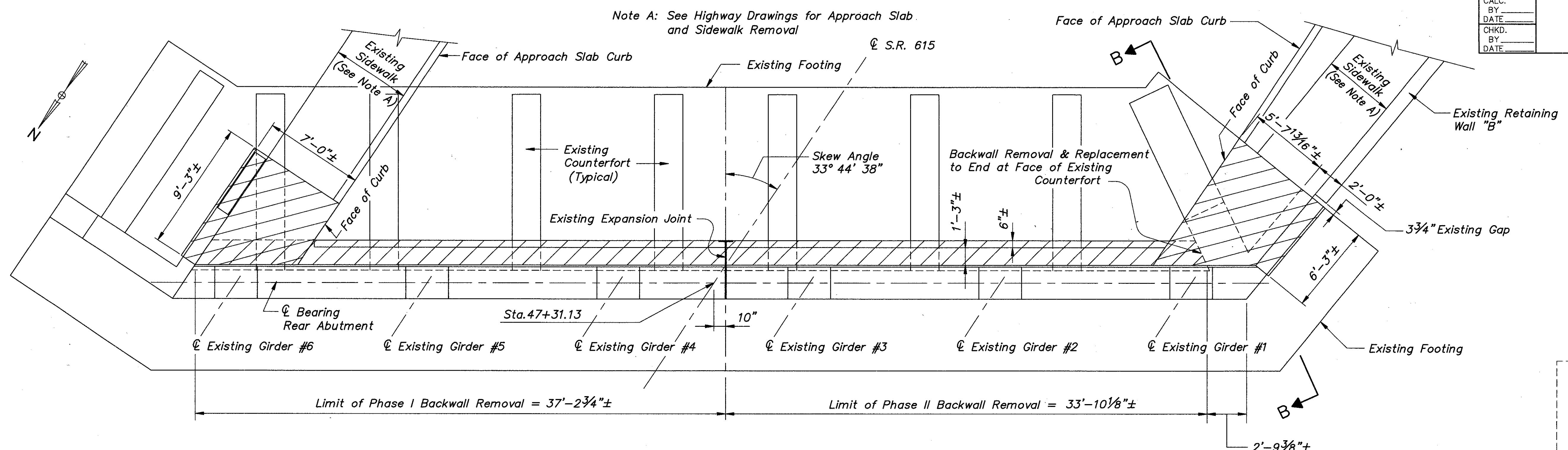


LAK-615-03.88

Note A: See Highway Drawings for Approach Slab and Sidewalk Removal



Legend

Existing Portions to be Removed

Existing Areas to be Repaired per Item 520 "Pneumatically placed Mortar"

Note: Existing Vertical Bars are to be Retained, and Incorporated into the New Work.

COLPETZER-THOMAS, INC. AN ENGINEERING GROUP WILLOUGHBY • MENTOR • NORTH CANTON • STEUBENVILLE • LORAIN					
REAR ABUTMENT DEMOLITION AND REPAIR LAK-615-0402 LAKE COUNTY					9 / 21
DESIGNED	DRAWN	TRACED	CHECKED	REVIEWED DATE	REVISED
JPR	R.L.B.	R.L.B.	RJC	JSA 9-22-88	