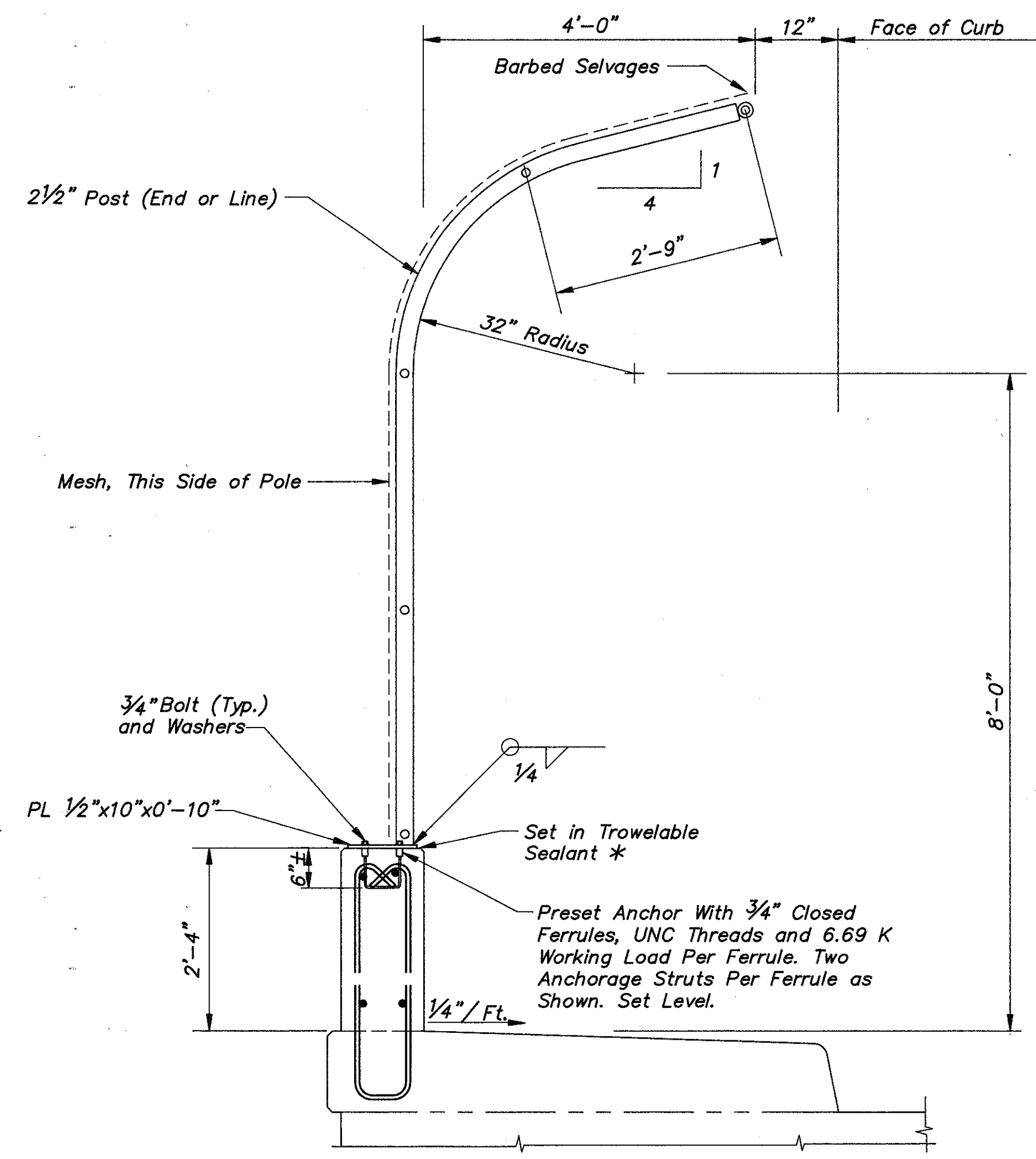
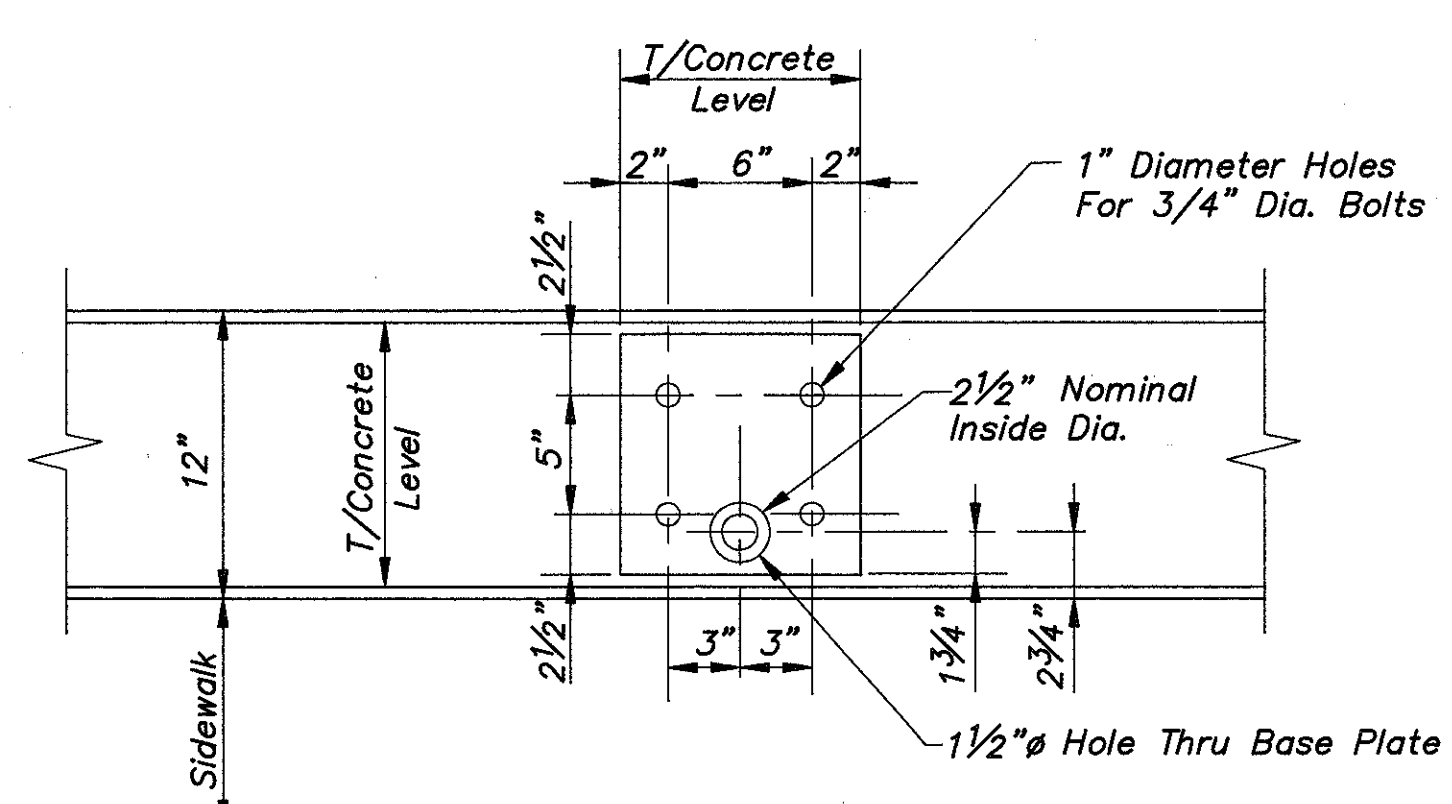


TYPICAL RAILING ELEVATION
LAK-2-0542
LAK-2-1029



TYPICAL SIDEWALK & PARAPET SECTION
* (Federal Specification TT-S-00227E, Type I, Class A)



POST BASE PLATE PLAN VIEW

- NOTES:
- Chain Link Fence shall be Type CL Conforming with Items 607, 517, 710.03 and the Following. Tension Bands Shall be a Minimum of 12 Gauge Steel by 7/8 inches Wide Assembled with 5/16 Inch Diameter by 1/4 Inch Galvanized or Cadmium Plated Bolts. One Tension Band Shall be Required for Each Foot of Fabric Height. Fence Posts and Anchor Bolts Shall be Vertical. Rails Shall be Parallel to Grade. The Fabric Shall be 1" Mesh. The Fabric and Rails Shall be Free to Expand or Contract Across Bridge Expansion Joints. Materials and Workmanship Shall Meet the Requirements of Item 607 Except that Aluminum Alloy Posts and Base Plates Shall not be used. Fabric Ties Shall be Spaced 14 Inches c/c Maximum on Line or End Posts and 24 Inches c/c Maximum on All Rails. All Posts and Pipe Sizes are Noted in Terms of the Nominal Inside Diameter of Standard Weight Pipe, Schedule 40. Stretcher Bars and Miscellaneous Hardware Shall be That of the Chain Link Fence Industry Standard. Base Plates and Miscellaneous Brackets for Steel Posts may be of any Commercially Weldable Steel Having a Yield Strength of 33,000 P.S.I. Aluminum Alloy Fabric (AASHTO M-181, Type III) Shall be used. Posts Shall have a Yield Stress of 30 K.S.I.
 - Notation: Typ. - Typical, Max. - Maximum, Approx. - Approximate, Dia. - Diameter.

COLPETZER-THOMAS, INC. AN ENGINEERING GROUP		WILLOUGHBY • MENTOR • NORTH CANTON • STEUBENVILLE • LORAIN		76 / 78	
FENCE DETAILS					
BRIDGE NO. LAK-2-0542					
AND LAK-2-1029					
LAKE COUNTY					
DESIGNED	DRAWN	TRACED	CHECKED	REVIEWED DATE	REVISED
B.J.A.	J.L.J.	J.L.J.	R.J.C.	J.E.A. 11/15/88	