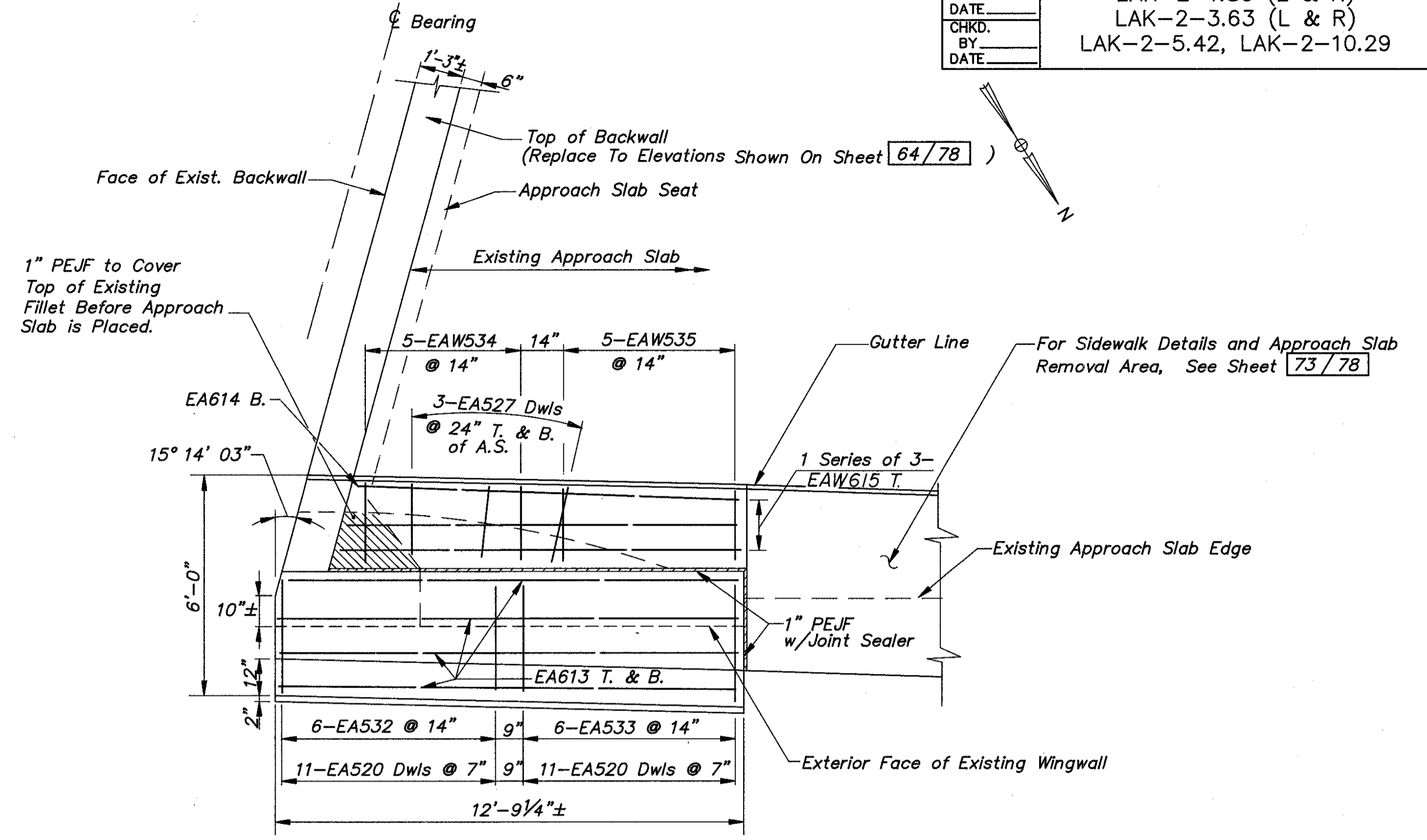
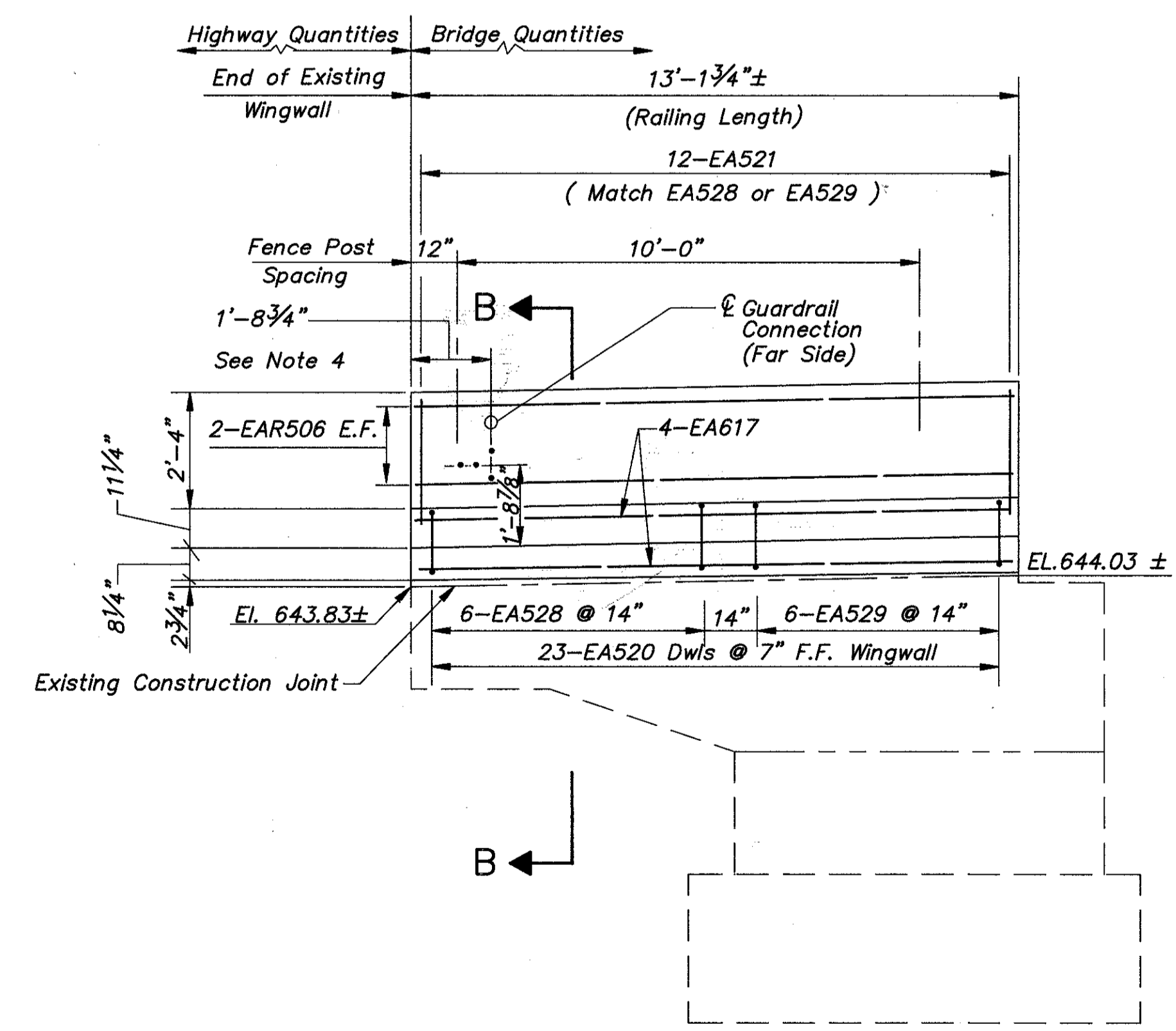


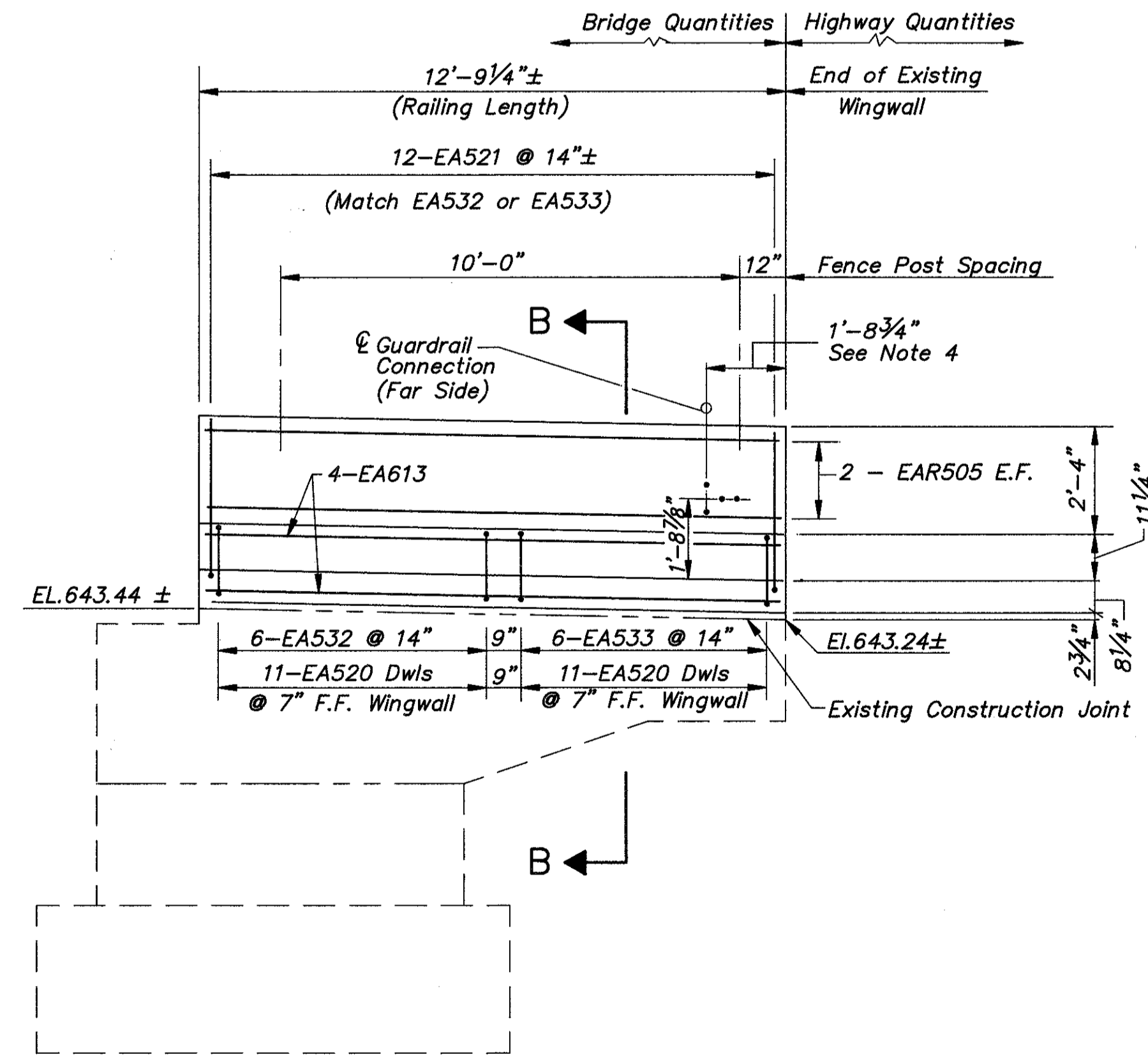
PLAN
PROPOSED SIDEWALK & PARAPET AT FORWARD ABUT. (LEFT SIDE)



PLAN
PROPOSED SIDEWALK & PARAPET AT FORWARD ABUT. (RIGHT SIDE)



ELEVATION
PROPOSED PARAPET ON FORWARD ABUT. LEFT WINGWALL



ELEVATION
PROPOSED PARAPET ON FORWARD ABUT. RIGHT WINGWALL

- Notes:
1. For Fence Details, See Sheet 76/78.
 2. For Section B-B See Sheet 67/78.
 3. Notation: N.F.-Near Face, F.F.-Far Face, E.F.-Each Face T. & B.-Top and Bottom of Slab, Abut. - Abutment; A.S. - Approach Slab
 4. For Type A Guardrail Terminal Connection, See Drawing GR-3.

COLPETZER-THOMAS, INC. AN ENGINEERING GROUP WILLOUGHBY • MENTOR • NORTH CANTON • STEUBENVILLE • LORAIN		66/78				
		WINGWALL DETAILS BRIDGE NO. LAK-2-1029 S.R.2 UNDER MUNSON ROAD LAKE COUNTY				
DESIGNED H.B.M. J.P.R.	DRAWN R.L.B. J.L.J.	TRACED R.L.B. J.L.J.	CHECKED R.J.C.	REVIEWED J.E.A.	DATE 11/15/88	REVISED