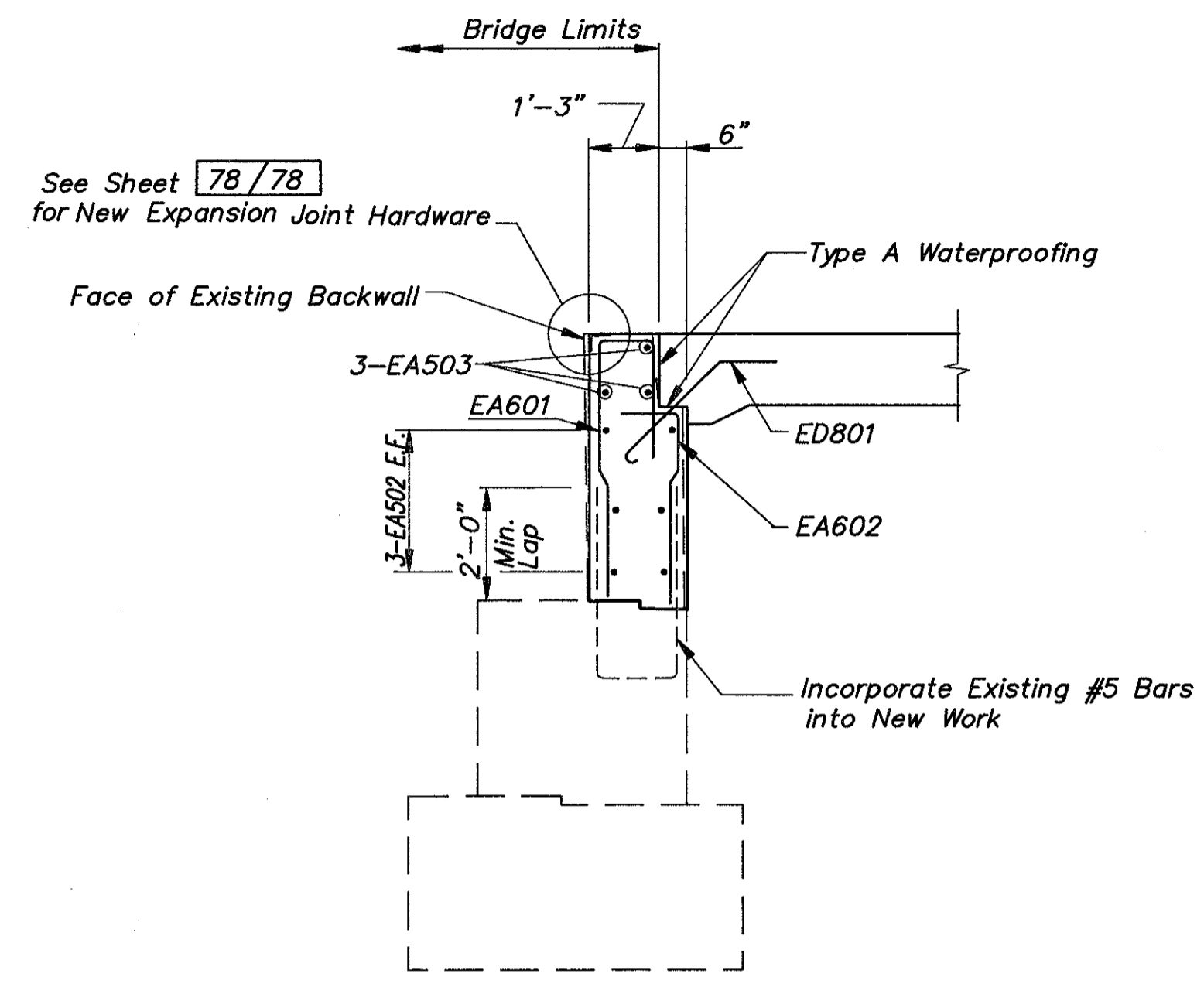
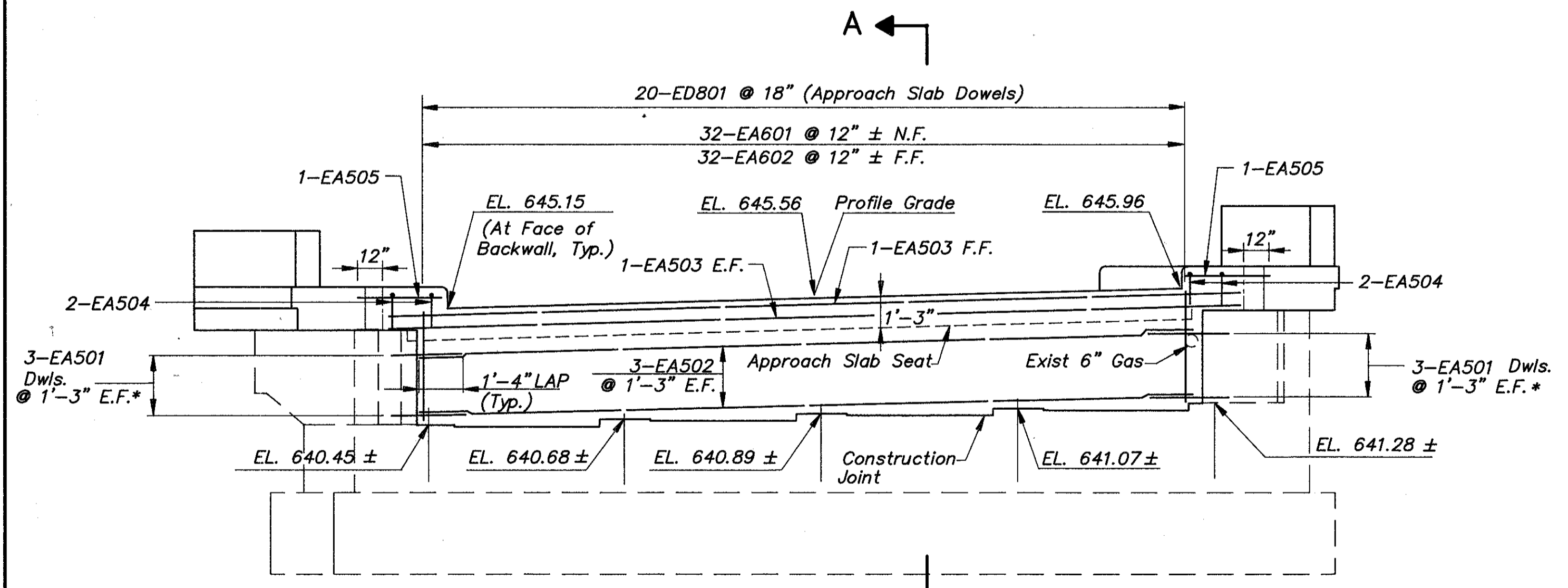


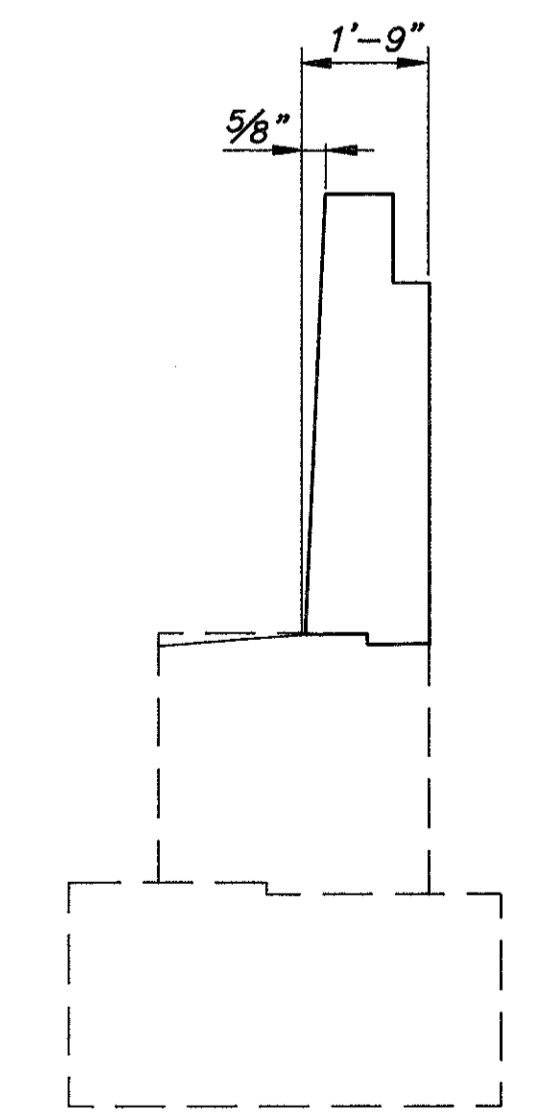
REAR ABUTMENT BACKWALL REPLACEMENT PLAN



SECTION A - A



ELEVATION



REAR ABUTMENT BACKWALL SLOPE

- NOTES:
- Elevations at Bridge Seat are from Survey Observation. Contractor Shall Verify All Elevations and Dimensions Where Applicable to Backwall Reconstruction.
 - All Bars Shall Be Epoxy Coated.
 - For Backwall Excavation Limits See Sheet 75/78.
 - Provide Dowel Holes for EA501 Bars Per Item 510.
 - For Section C-C, See Sheet 71/78.
- Notation: N.F.—Near Face, F.F.—Far Face, E.F. — Each Face, Typ.—Typical.

* Drill Dowels 4" Clear of Surface, 12" Deep

COLPETZER-THOMAS, INC. AN ENGINEERING GROUP <small>WILLOUGHBY • MENTOR • NORTH CANTON • STEUBENVILLE • LORAIN</small>		63/78				
		REAR ABUTMENT BRIDGE NO. LAK-2-1029 S.R. 2 UNDER MUNSON ROAD LAKE COUNTY				
DESIGNED	DRAWN	TRACED	CHECKED	REVIEWED	DATE	REVISED
J.P.R.	R.L.M. M.T.W.	R.L.M. M.T.W.	R.J.C.	J.E.A.	11/15/88	