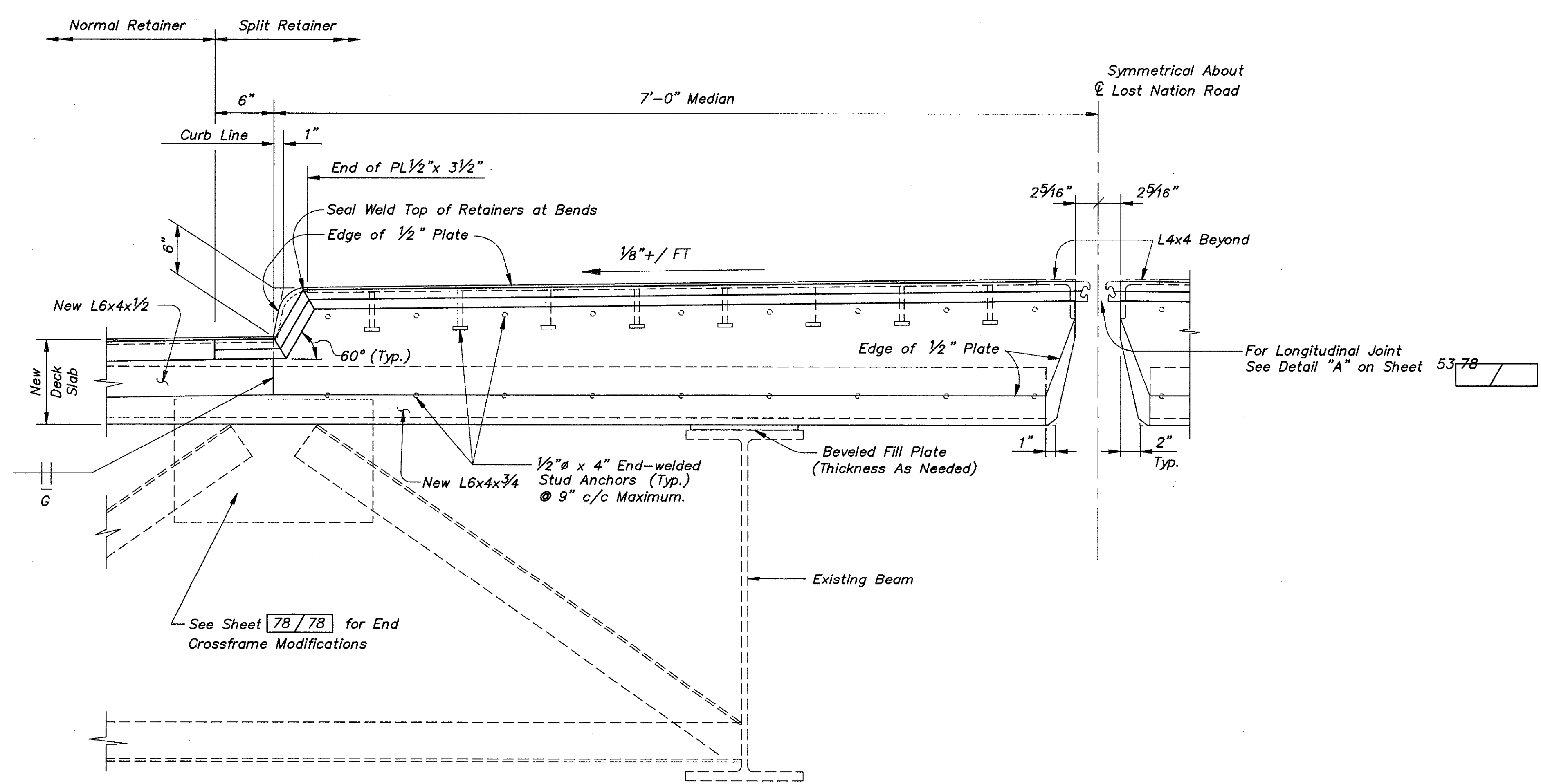


SECTION E-E



SECTION F-F

Note:  
 1. For Location of Sections E-E And F-F, See Sheet 53/78.  
 2. Notation: Typ. - Typical, H.P. - High Point

**COLPETZER-THOMAS, INC.**  
 AN ENGINEERING GROUP  
 WILLOUGHBY • MENTOR • NORTH CANTON • STEUBENVILLE • LORAIN

54/78

**LONGITUDINAL AND TRANSVERSE JOINTS AT MEDIAN**  
 BRIDGE NO. LAK-2-0542  
 S.R. 2 UNDER LOST NATION ROAD  
 LAKE COUNTY

DESIGNED	DRAWN	TRACED	CHECKED	REVIEWED	DATE	REVISED
B.J.A.	R.L.B.	R.L.B.	R.J.C.	J.E.A.	11/15/88	