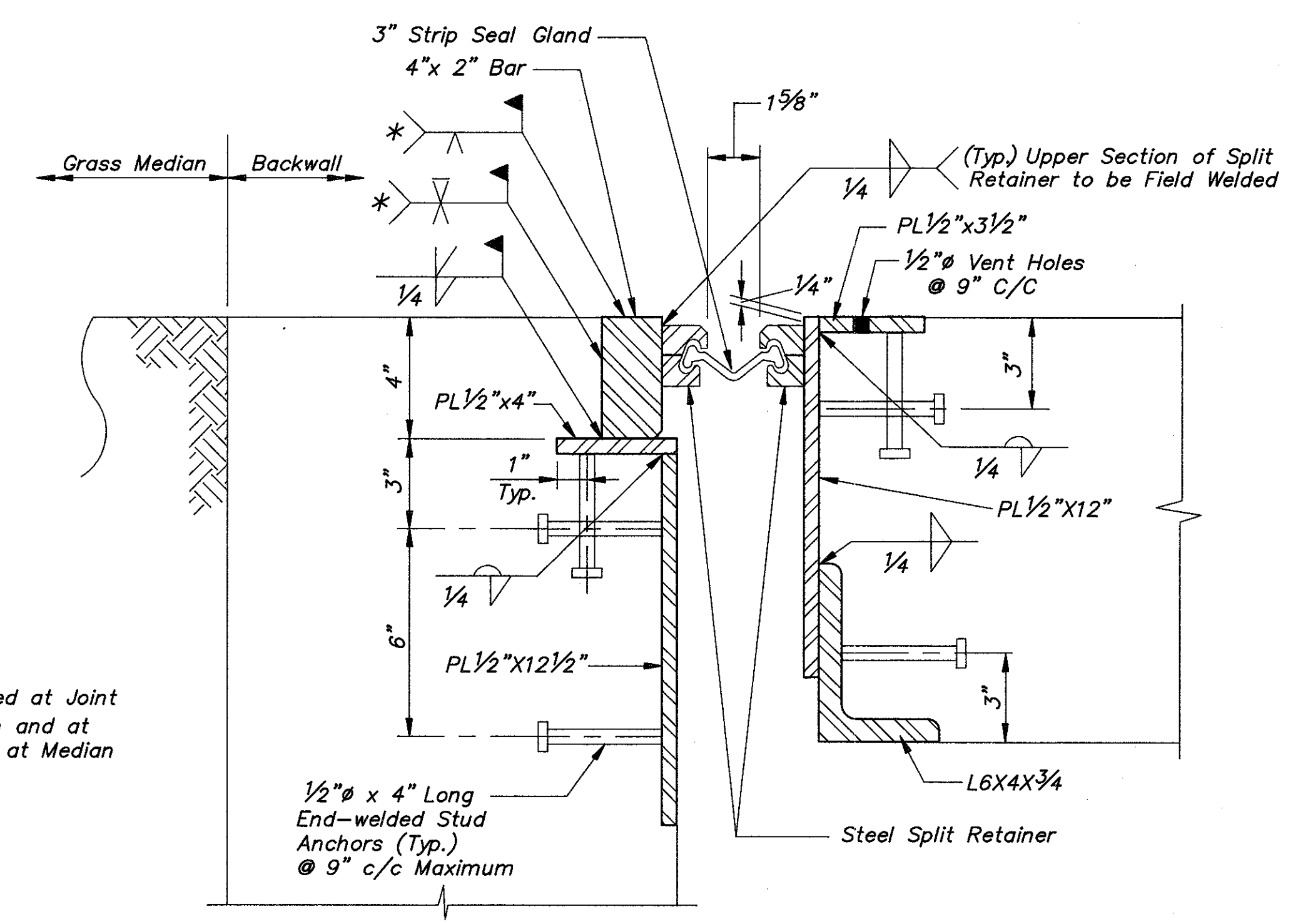


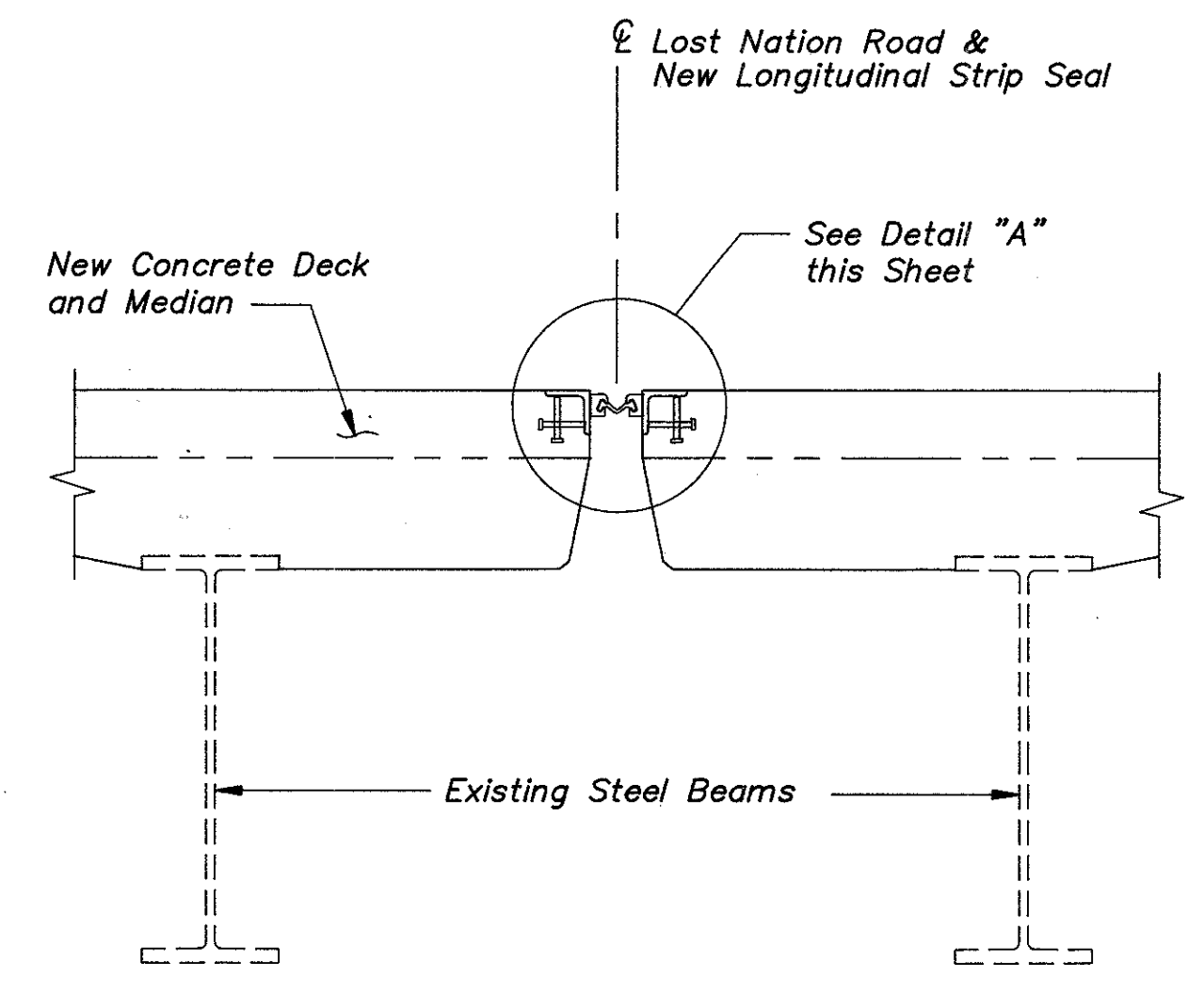
PLAN OF INTERSECTION OF TRANSVERSE AND LONGITUDINAL STRIP SEAL AT FORWARD AND REAR ABUTMENT



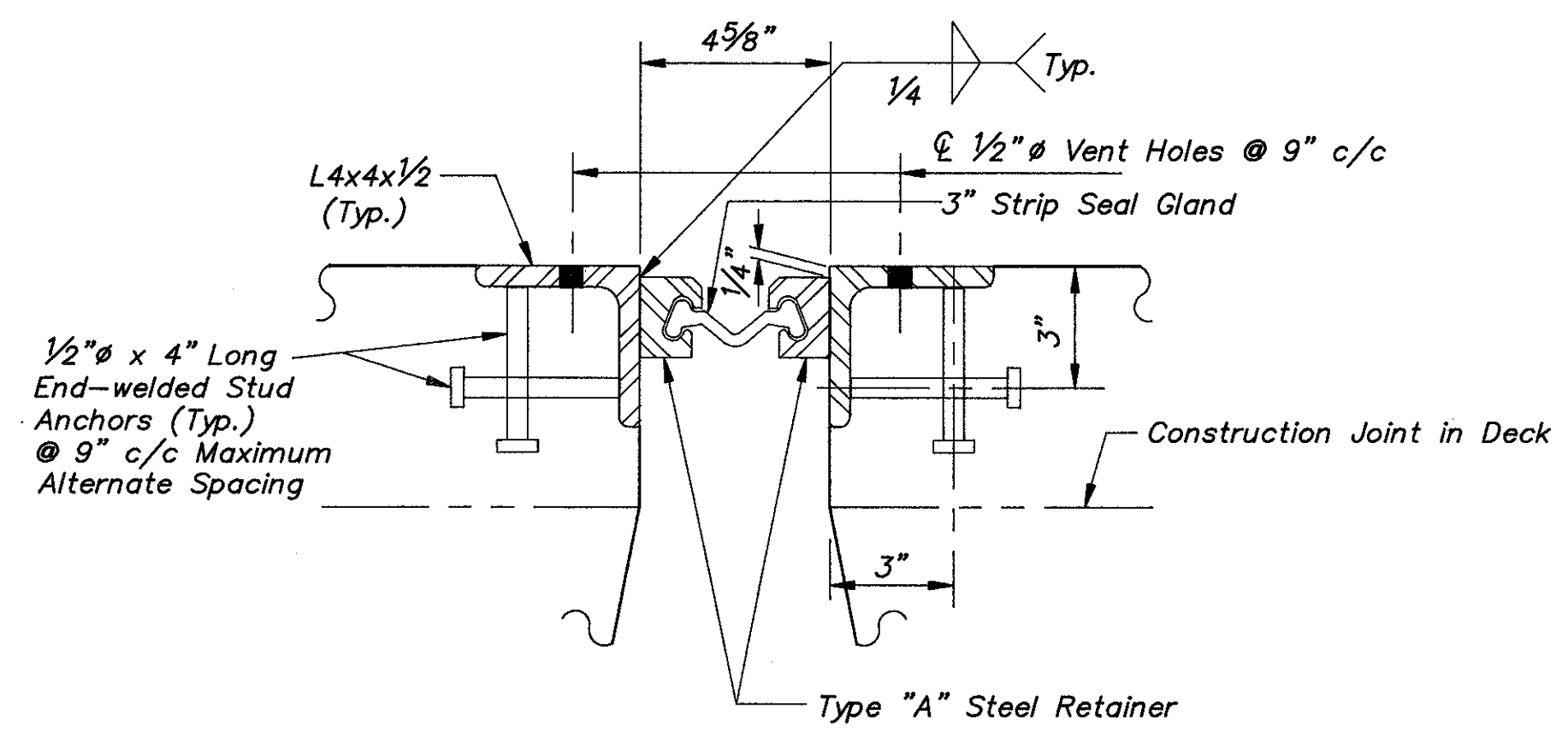
SECTION B-B

* Weld to be Used at Joint on \bar{C} of Median and at Bends Located at Median Curb Line

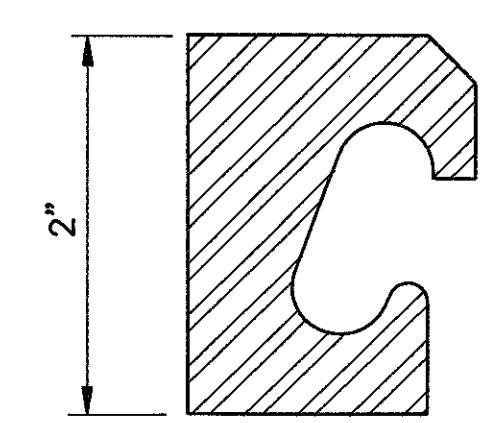
Fabrication and Installation of Strip Seal "T" Section and Associated Joint Hardware to be Included for Payment in Item 516 - Structural Expansion Joints including Elastomeric Strip Seals, as per Plan.



SECTION A-A



DETAIL "A"



TYPE "A" STEEL RETAINER

- Notes:
1. For Section E-E See Sheet 54/78
 2. For Section F-F See Sheet 54/78
 3. Notation: Typ. - Typical
 4. Modification of the Existing End Crossframes must be provided for. Refer to Sheet 78/78 for Details.

COLPETZER-THOMAS, INC. AN ENGINEERING GROUP <small>WILLOUGHBY • MENTOR • NORTH CANTON • STEUBENVILLE • LORAIN</small>					
53/78					
LONGITUDINAL AND TRANSVERSE JOINTS AT MEDIAN BRIDGE NO. LAK-2-0542 S.R. 2 UNDER LOST NATION ROAD LAKE COUNTY					
DESIGNED	DRAWN	TRACED	CHECKED	REVIEWED	DATE
B.J.A.	R.L.B.	R.L.B.	R.J.C.	J.E.A.	11/15/88
REVISED					