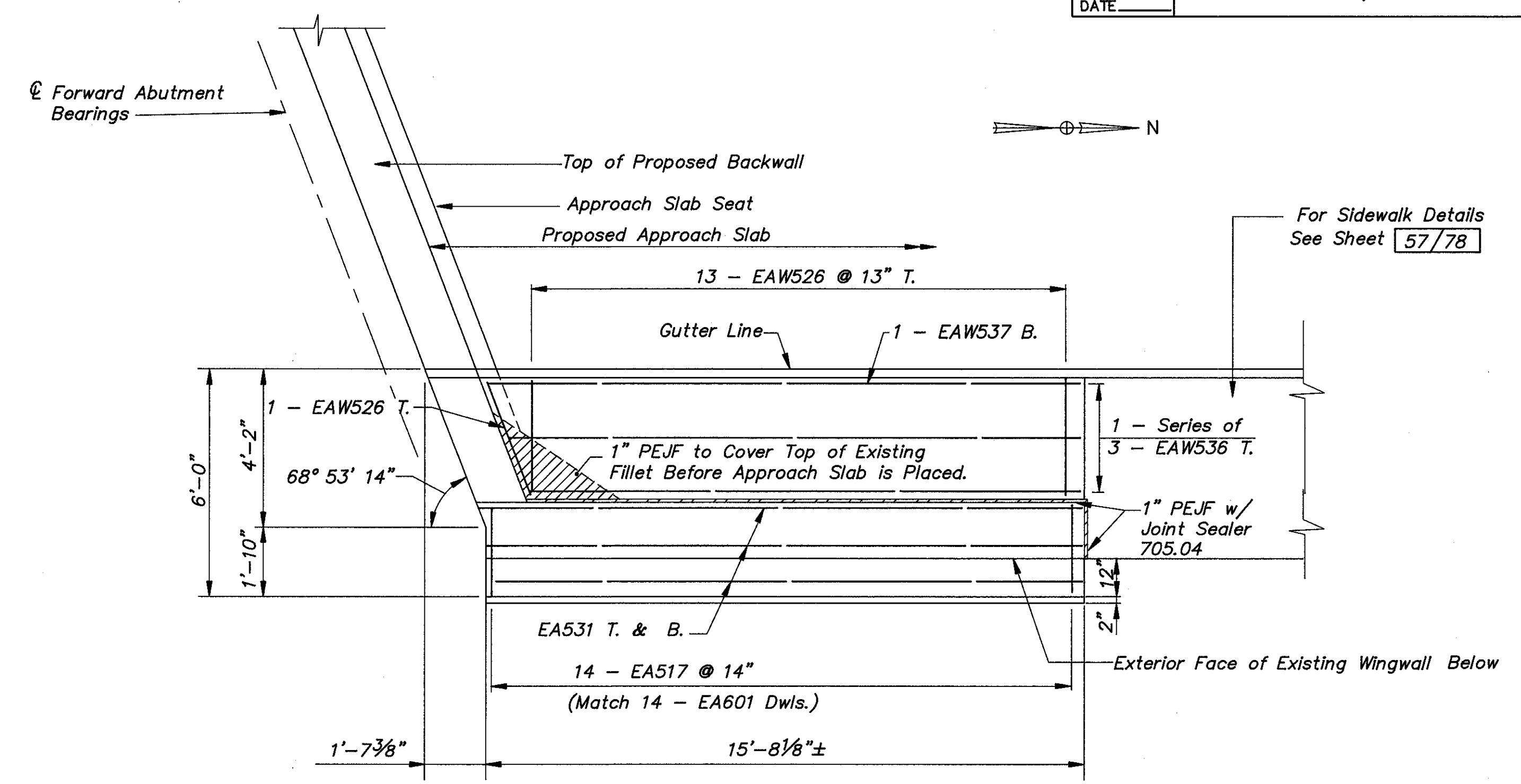
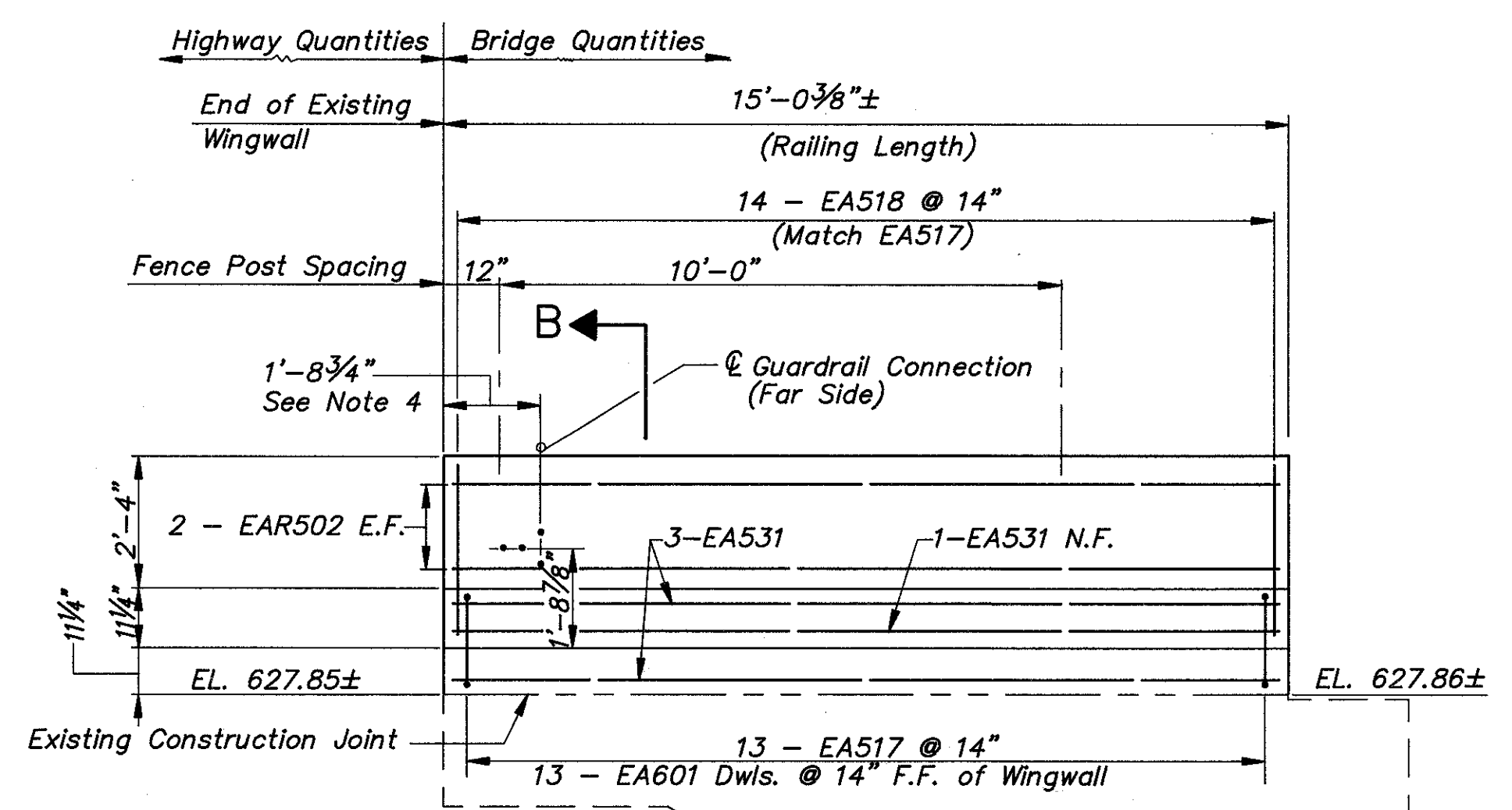


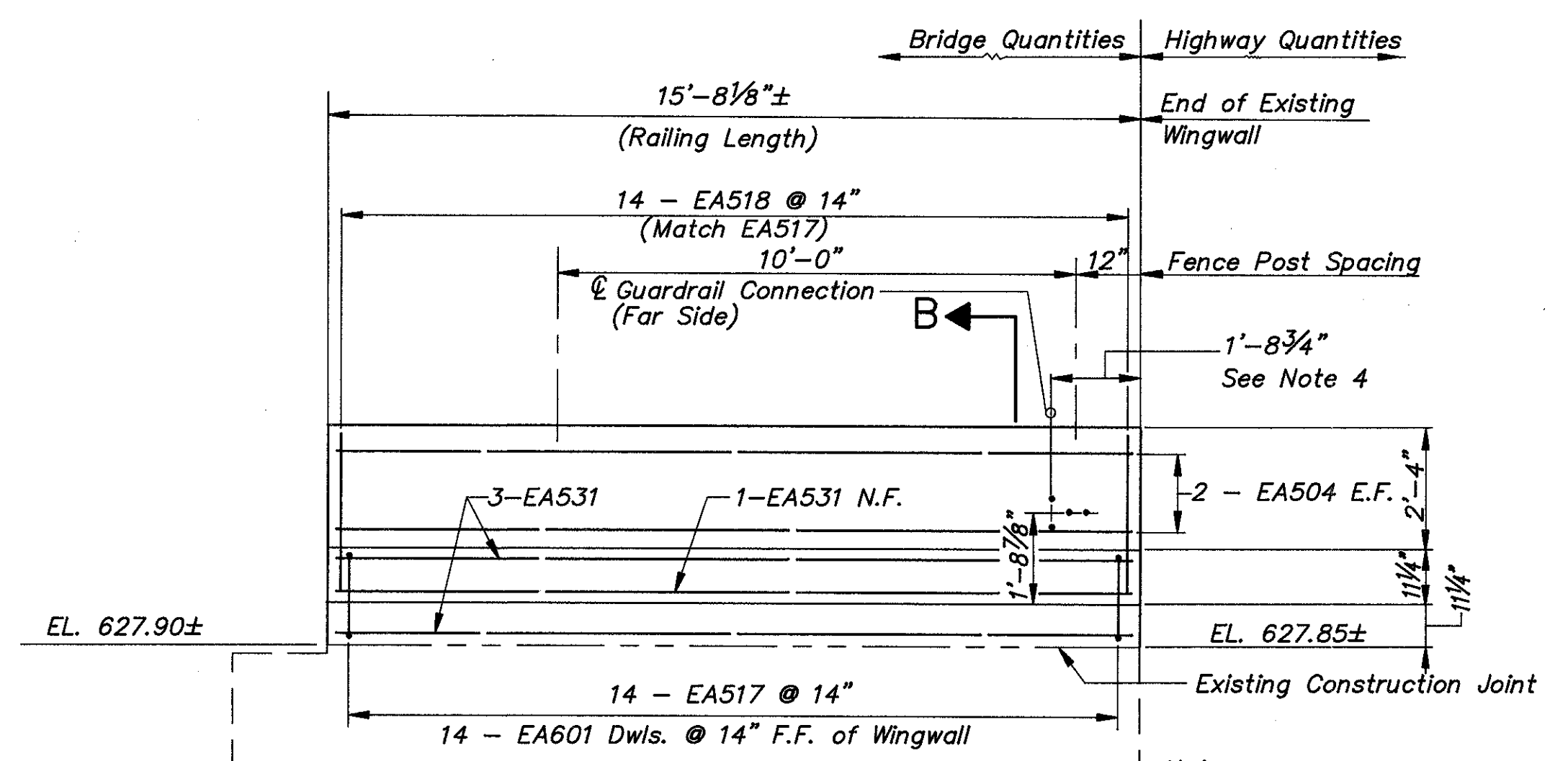
PLAN
PROPOSED SIDEWALK & PARAPET AT FORWARD ABUT.
(PHASE I)



PLAN
PROPOSED SIDEWALK & PARAPET AT FORWARD ABUT.
(PHASE II)



ELEVATION
PROPOSED PARAPET ON FORWARD ABUT. WINGWALL
(PHASE I)



ELEVATION
PROPOSED PARAPET ON FORWARD ABUT. WINGWALL
(PHASE II)

- Notes:
1. For Fence Details, See Sheet 76/78.
 2. For Section B-B See Sheet 47/78.
 3. Notation: N.F.—Near Face, F.F.—Far Face, E.F.—Each Face T. & B.—Top and Bottom of Slab, Abut. — Abutment
 4. For Type A Guardrail Terminal Connection, See Drawing GR-3.

COLPETZER-THOMAS, INC.
AN ENGINEERING GROUP
WILLOUGHBY • MENTOR • NORTH CANTON • STEUBENVILLE • LORAIN 46/78

WINGWALL DETAILS
BRIDGE NO. LAK-2-0542
S.R.2 UNDER LOST NATION ROAD
LAKE COUNTY

DESIGNED	DRAWN	TRACED	CHECKED	REVIEWED	DATE	REVISED
J.P.R.	R.L.B. M.T.W.	R.L.B. M.T.W.	R.J.C.	J.E.A.	11/15/88	