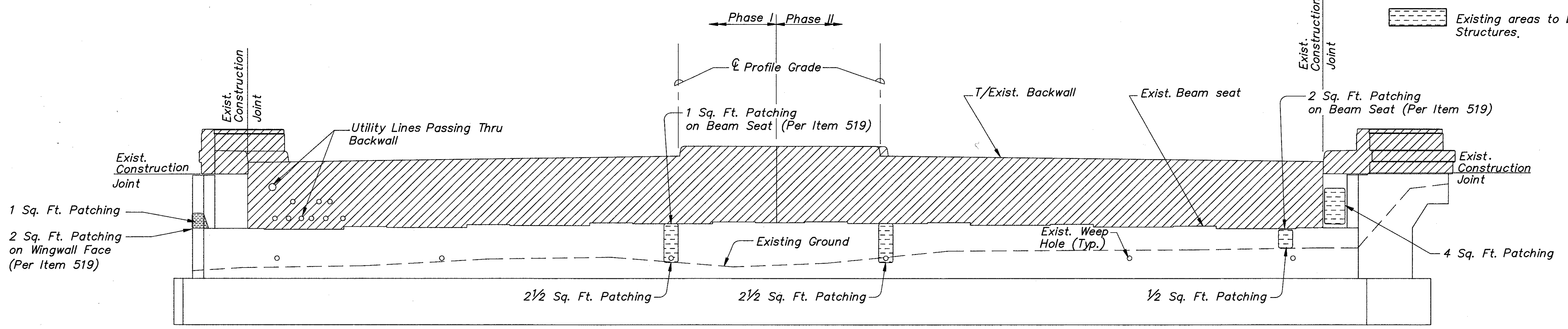


ELEVATION
REAR ABUTMENT

- Notes:
1. Quantities for Item 519— Patching Concrete Structures, made during field survey are for the purpose of establishing the contract unit price for these items. Actual quantities and extent of repair shall be as directed by the Engineer and measured in the field.
 2. 1" deep saw cut to be made at surface before concrete is removed.
 3. Notation: Sq. Ft. — Square Feet, Typ. — Typical, Exist. — Existing.

- Legend
- Existing portions to be removed (reinforcing to be salvaged as indicated in plans)
 - Existing areas to be repaired per Item 519 — Patching Concrete Structures.



ELEVATION
FORWARD ABUTMENT

COLPETZER-THOMAS, INC. AN ENGINEERING GROUP		42/78
WILLOUGHBY • MENTOR • NORTH CANTON • STEUBENVILLE • LORAIN		
ABUTMENT DEMOLITION AND REPAIR		
BRIDGE NO. LAK-2-0542 S.R. 2 UNDER LOST NATION ROAD LAKE COUNTY		
DESIGNED	DRAWN	TRACED
B.J.A.	R.L.B.	R.L.B.
CHECKED	REVIEWED	DATE
R.J.C.	J.E.A.	11/15/88
REVISED		