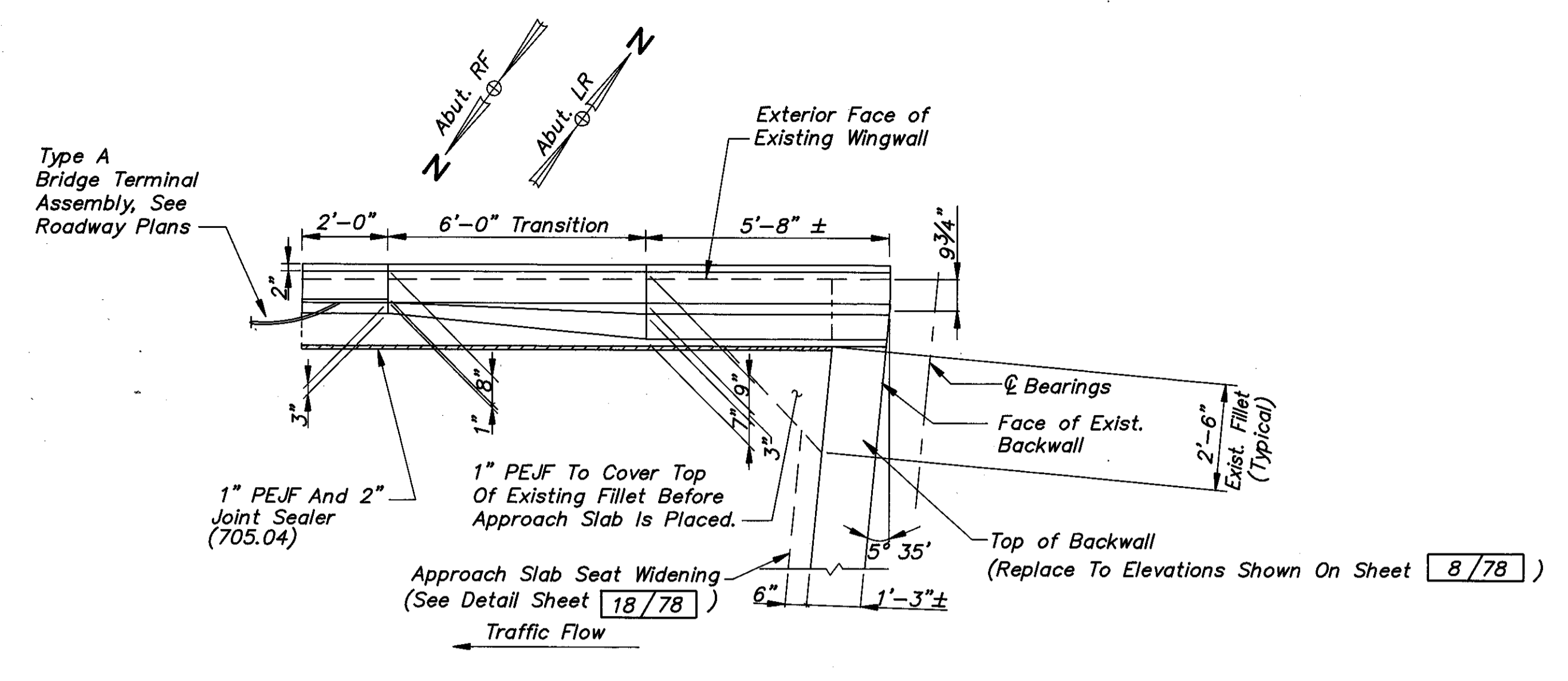
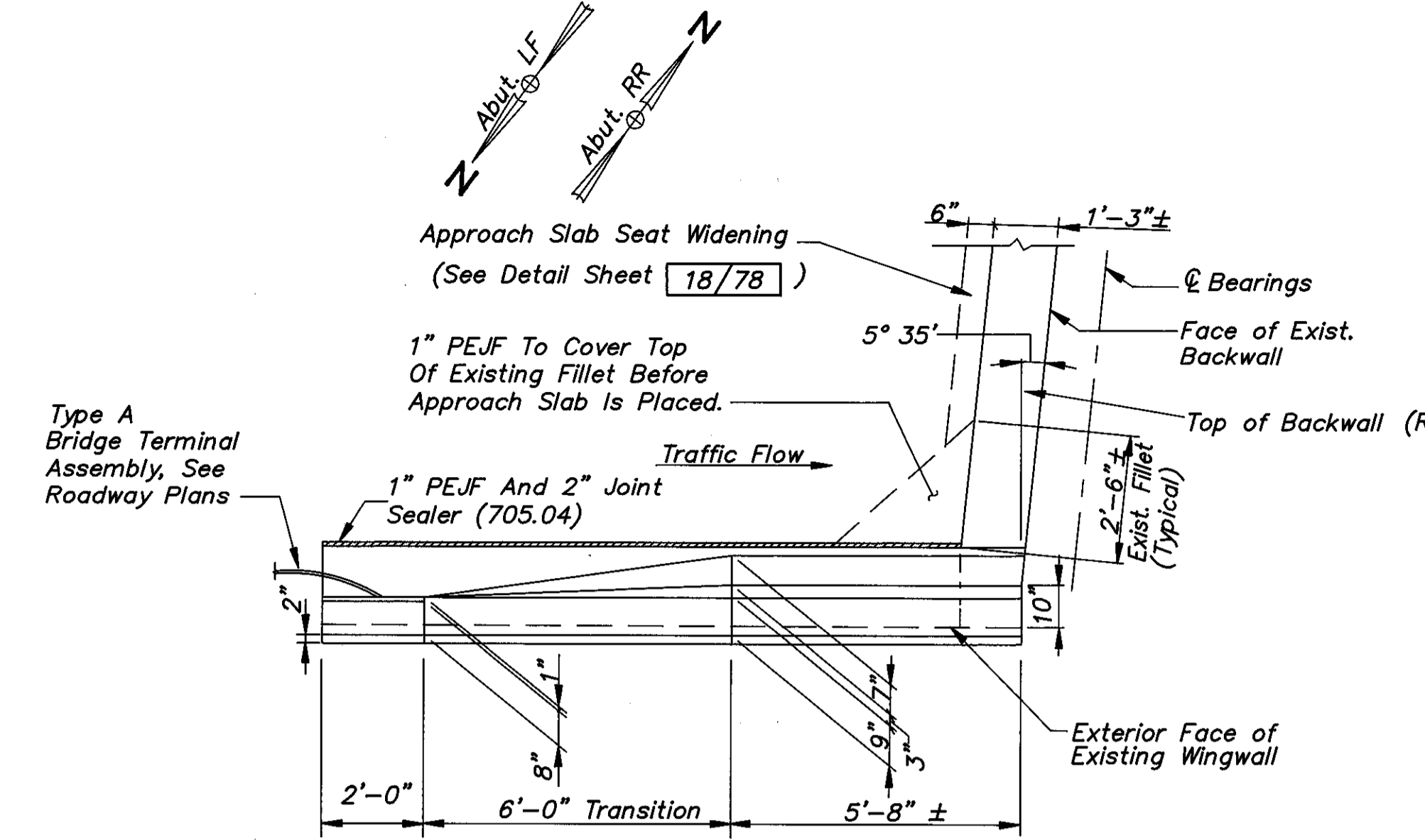


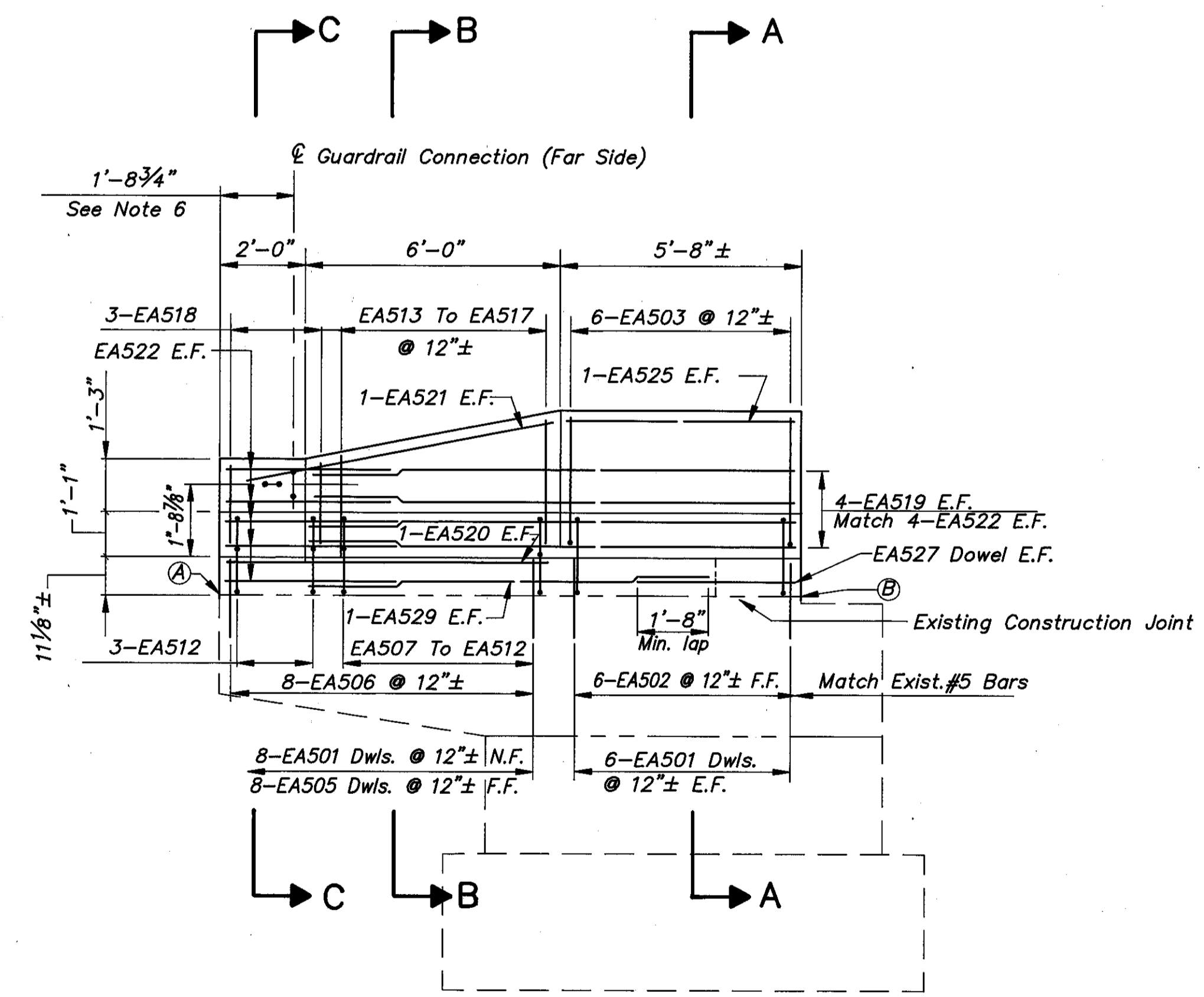
BRIDGE	LOCATION			
	A	B	C	D
LAK-2-0180 L	667.62±	667.66±	667.60±	667.64±
LAK-2-0180 R	667.63±	667.66±	667.58±	667.62±



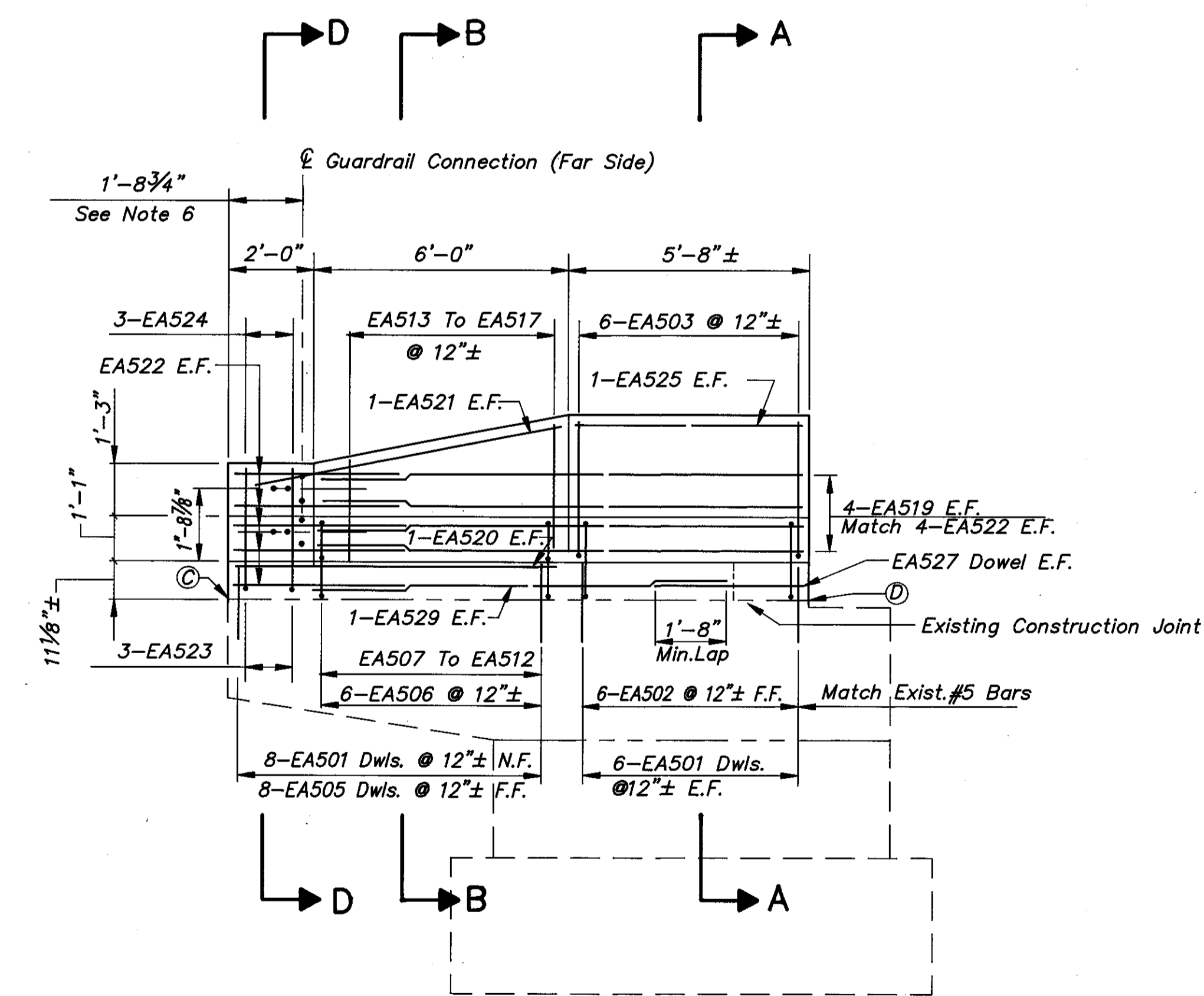
**PLAN**  
PROPOSED PARAPET ON OUTSIDE WINGWALL  
(TYPICAL FOR LR AND RF ABUTMENTS)



**PLAN**  
PROPOSED PARAPET ON OUTSIDE WINGWALL  
(TYPICAL FOR RR AND LF ABUTMENTS)



**ELEVATION**  
PROPOSED PARAPET ON OUTSIDE WINGWALL  
(TYPICAL FOR LR AND RF ABUTMENTS UNDER PHASE II)



**ELEVATION**  
PROPOSED PARAPET ON OUTSIDE WINGWALL  
(TYPICAL FOR RR AND LF ABUTMENT UNDER PHASE II)

- Notes:
1. Outside Wingwalls Are Adjacent to the Right Driving Lanes.
  2. For Abutment Locations, See General Plan On Sheet 3/78.
  3. For Section A-A, See Sheet 12/78.
  4. For Sections B-B Thru D-D, See Sheet 13/78.
  5. Notation: N.F. - Near Face, F.F. - Far Face, E.F. - Each Face.  
LR - Left Rear Abut., LF - Left Forward Abut., RR - Right Rear Abut., RF - Right Forward Abut., Dws. - Dowels, Exist. - Existing, PEJF - Preformed Expansion Joint Filler, Abut. - Abutment
  6. For Type A Guardrail Terminal Connection, See Drawing GR-3.

**COLPETZER-THOMAS, INC.**  
AN ENGINEERING GROUP  
WILLOUGHBY • MENTOR • NORTH CANTON • STEUBENVILLE • LORAIN 10/78

**WINGWALL DETAILS**  
BRIDGE NO. LAK-2-0180 L & R  
OVER RUSH ROAD  
LAKE COUNTY

DESIGNED	DRAWN	TRACED	CHECKED	REVIEWED	DATE	REVISED
J.P.R.	R.L.B.	R.L.B.	R.J.C.	J.E.A.	11/15/88	
	M.T.W.	M.T.W.				