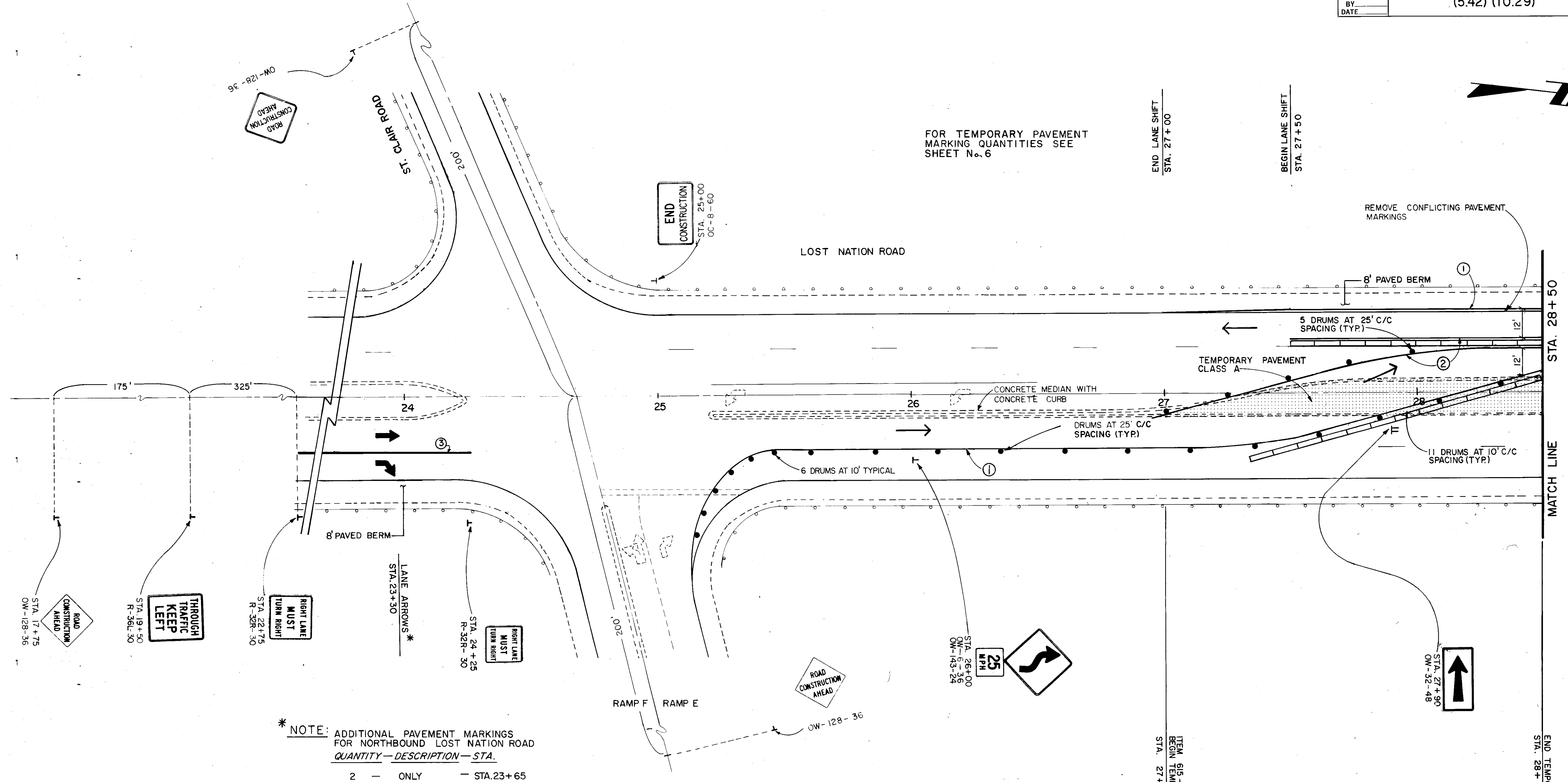




FOR TEMPORARY PAVEMENT MARKING QUANTITIES SEE SHEET No. 6

END LANE SHIFT
STA. 27+00

BEGIN LANE SHIFT
STA. 27+50



* NOTE: ADDITIONAL PAVEMENT MARKINGS FOR NORTHBOUND LOST NATION ROAD

QUANTITY	DESCRIPTION	STA.
2	ONLY	STA. 23+65
2	LANE ARROW	STA. 23+30

- LEGEND**
- ⓪ TEMPORARY WHITE EDGE LINE
 - Ⓛ TEMPORARY YELLOW EDGE LINE
 - Ⓜ TEMPORARY CHANNELIZING LINE
 - ▬ TEMPORARY CONCRETE BARRIER
 - ▨ TEMPORARY CONCRETE BARRIER, BRIDGE MOUNTED

ITEM 615 - CLASS A
BEGIN TEMPORARY PAVEMENT
STA. 27+00

END TEMPORARY PAVEMENT
STA. 28+50

MATCH LINE
STA. 28+50