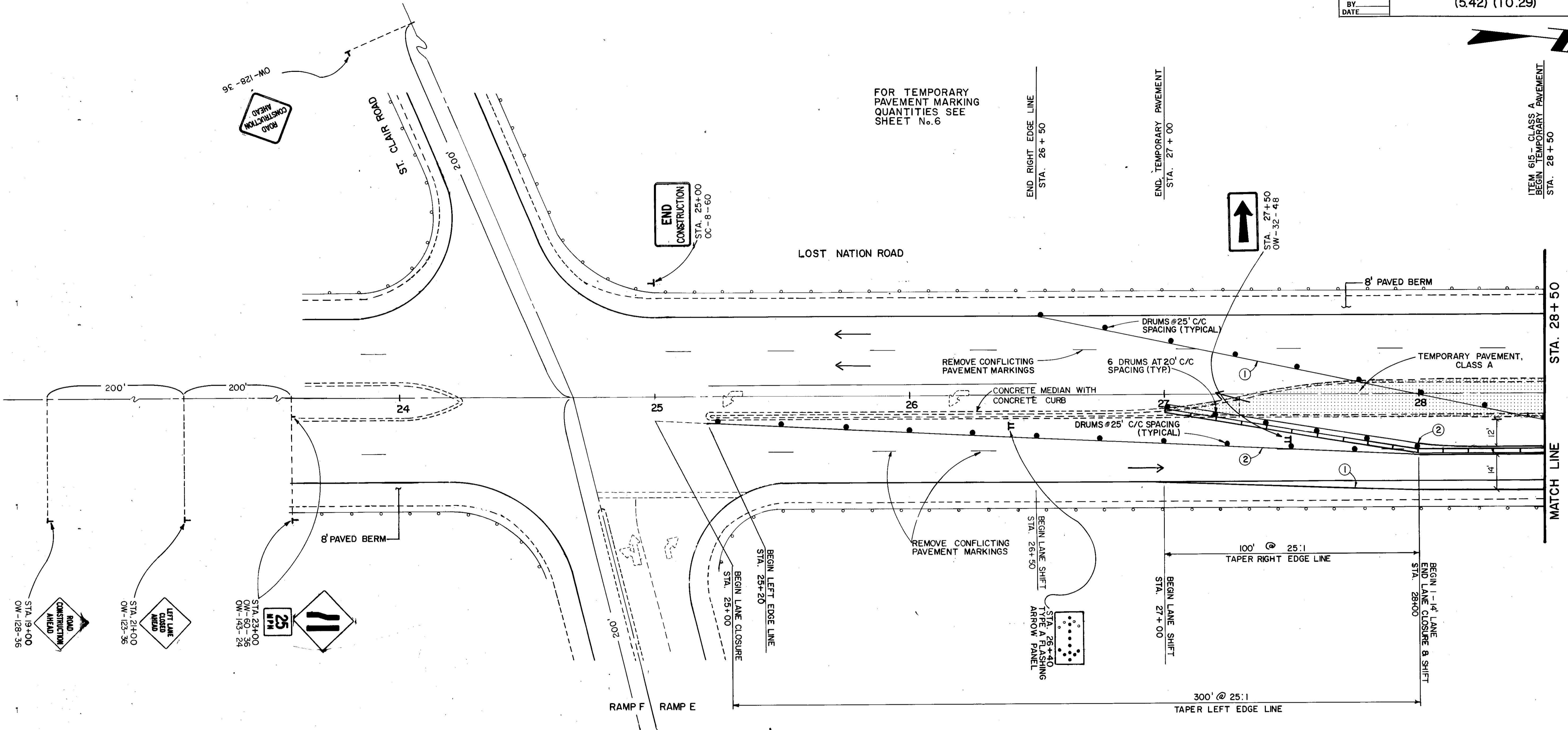




FOR TEMPORARY PAVEMENT MARKING QUANTITIES SEE SHEET No. 6



NOTE: THE FOLLOWING T.R.P.M.S SHALL REMAIN IN PLACE FOR USE DURING PHASE II:

- ① - LEFT & RIGHT EDGE LINES - STA. 23+00 to STA. 24+50 (R)
- ② - LEFT EDGE LINE - STA. 25+20 to STA. 27+00 (R) (SOUTHBOUND)
- ③ - CHANNELIZING LINE, LANE LINE & RIGHT EDGE LINE - STA. 25+00 to STA. 26+50 (L)

- LEGEND**
- ① TEMPORARY WHITE EDGE LINE
 - ② TEMPORARY YELLOW EDGE LINE
 - ③ TEMPORARY CHANNELIZING LINE
 - TEMPORARY CONCRETE BARRIER
 - TEMPORARY CONCRETE BARRIER, BRIDGE MOUNTED

