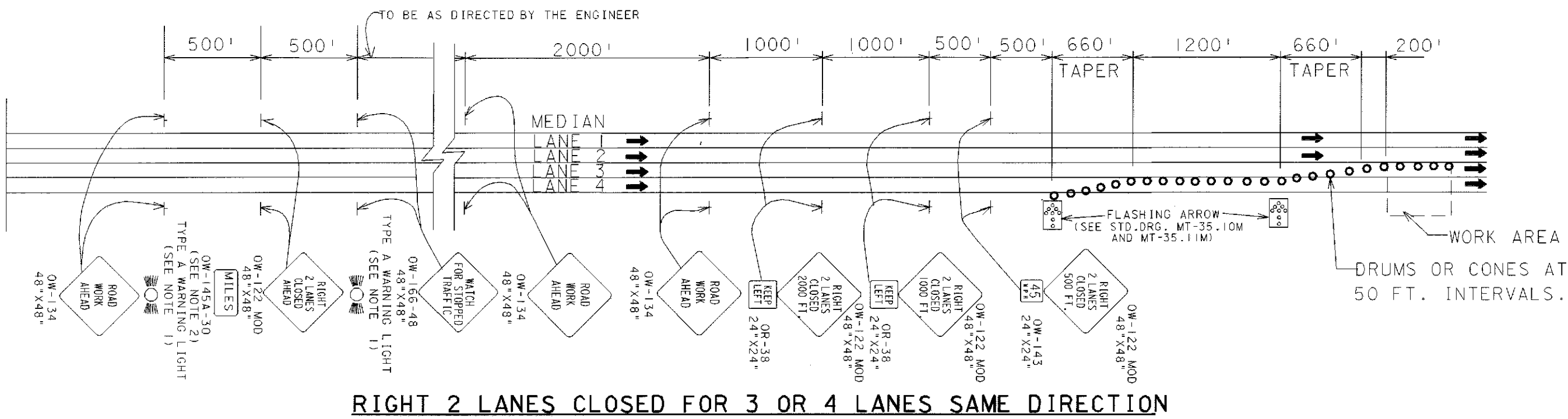


**LEFT 2 LANES CLOSED FOR 3 OR 4 LANES SAME DIRECTION**



**RIGHT 2 LANES CLOSED FOR 3 OR 4 LANES SAME DIRECTION**

**GENERAL NOTES:**

1. TYPE A FLASHING WARNING LIGHTS SHOWN ON THE "ROAD WORK AHEAD" AND "RIGHT(OR LEFT) 2 LANES CLOSED AHEAD" SIGNS ARE REQUIRED WHENEVER A NIGHT LANE CLOSURE IS NECESSARY.
2. EXTRA ADVANCE WARNING SIGN GROUPS CONSISTING OF OW-128, OW-122 MOD, OR OW 123 MOD AND OW-166 SIGNS PLUS DISTANCE PLATES MAY BE SPECIFIED IN THE PLANS OR REQUIRED TO BE ERECTED AT THE DIRECTION OF THE ENGINEER.