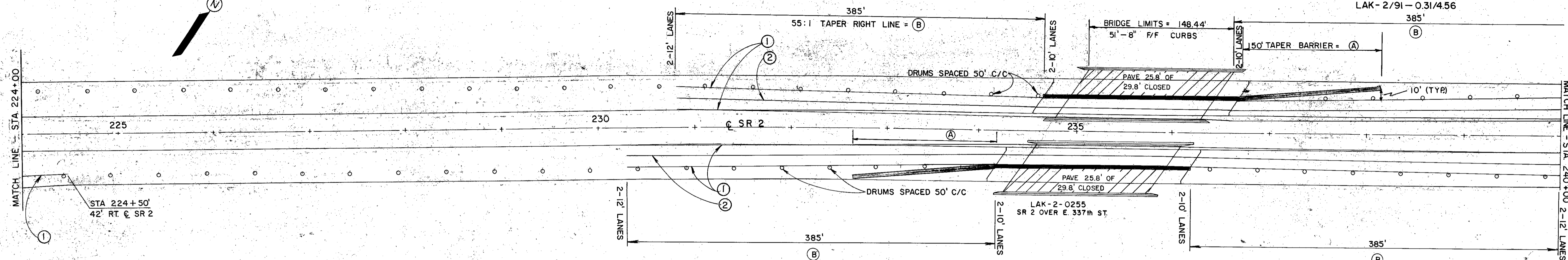


TRAFFIC CONTROL

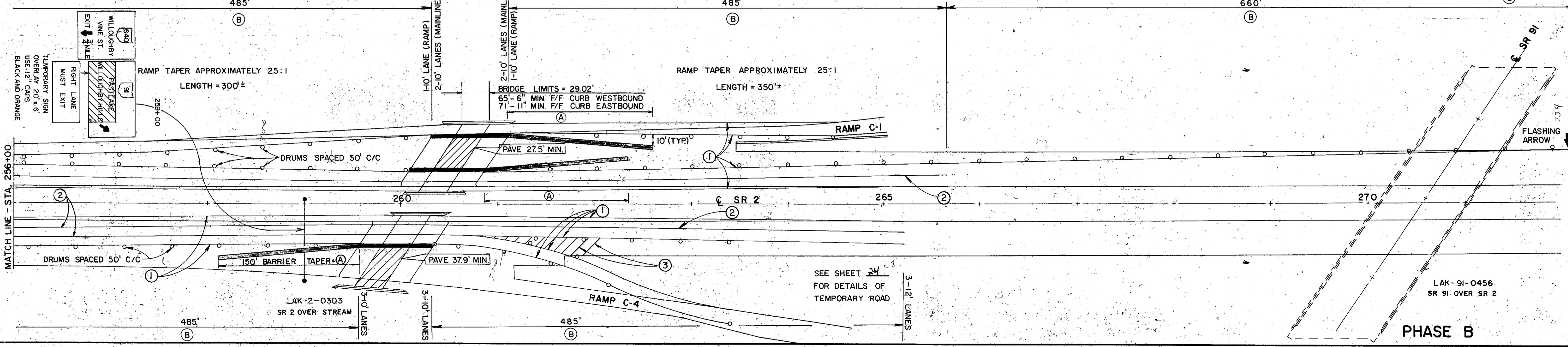
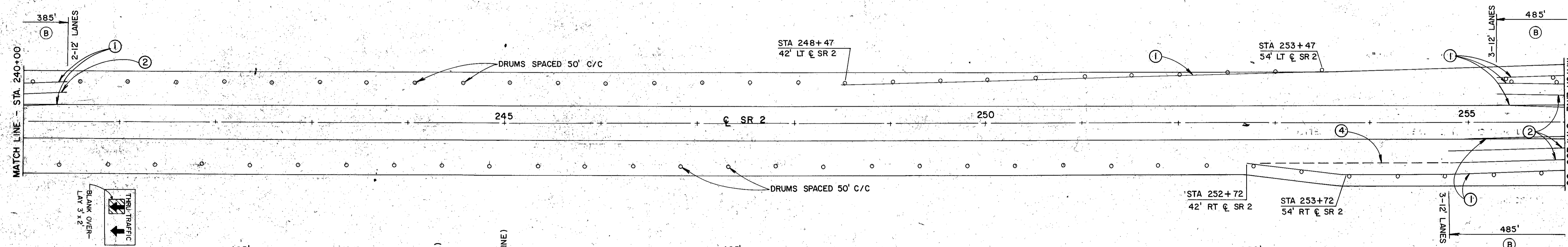
FHWA REGION	STATE	PROJECT	
5	OHIO		

27
39

LAKE COUNTY
LAK-2/91-0.31/4.56



FOR TEMPORARY PAVEMENT MARKING LEGEND
SEE SHEET N^o 20



SEE SHEET 24
FOR DETAILS OF
TEMPORARY ROAD

LAK-91-0456
SR 91 OVER SR 2

PHASE B

TRAFFIC CONTROL