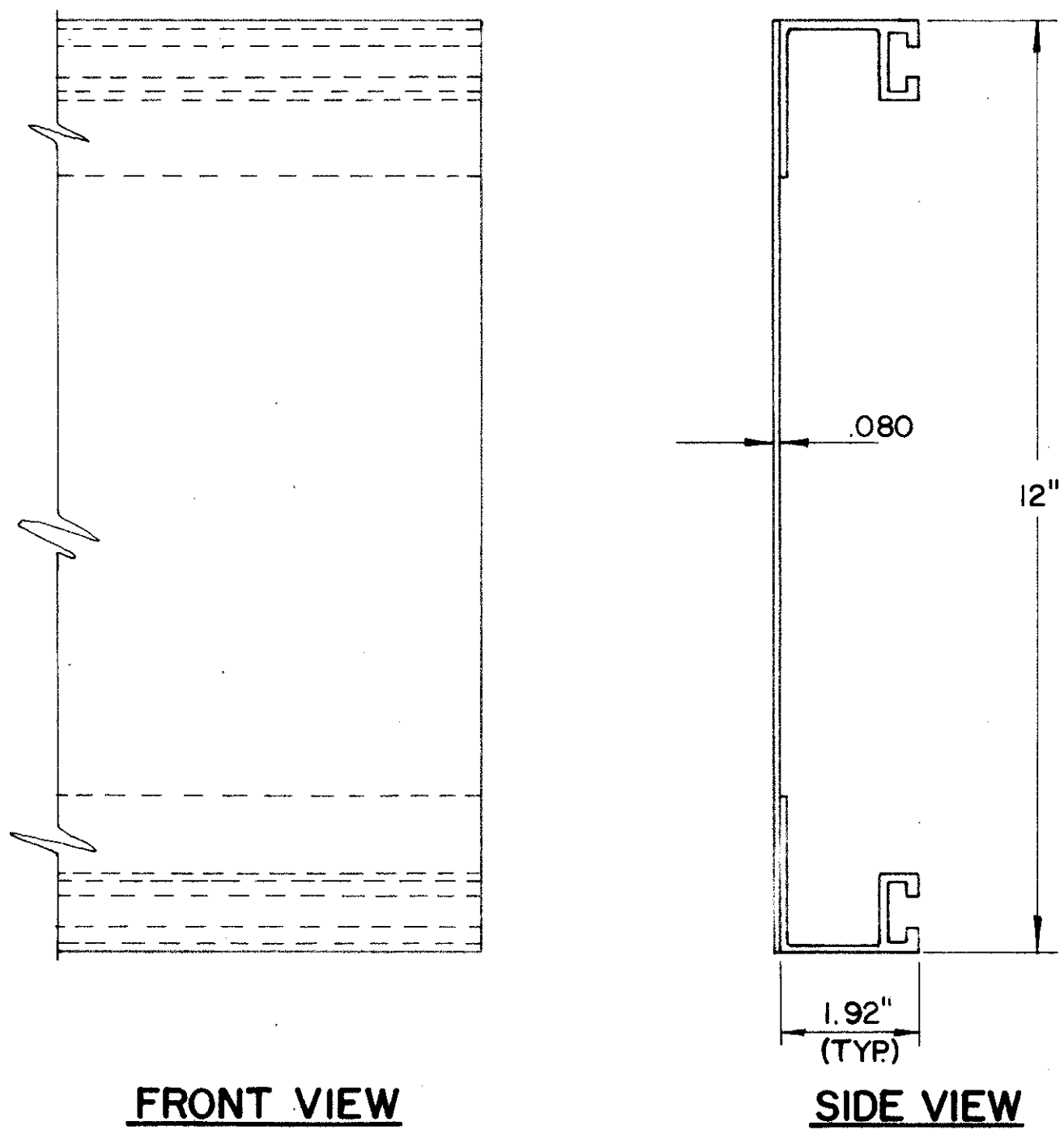
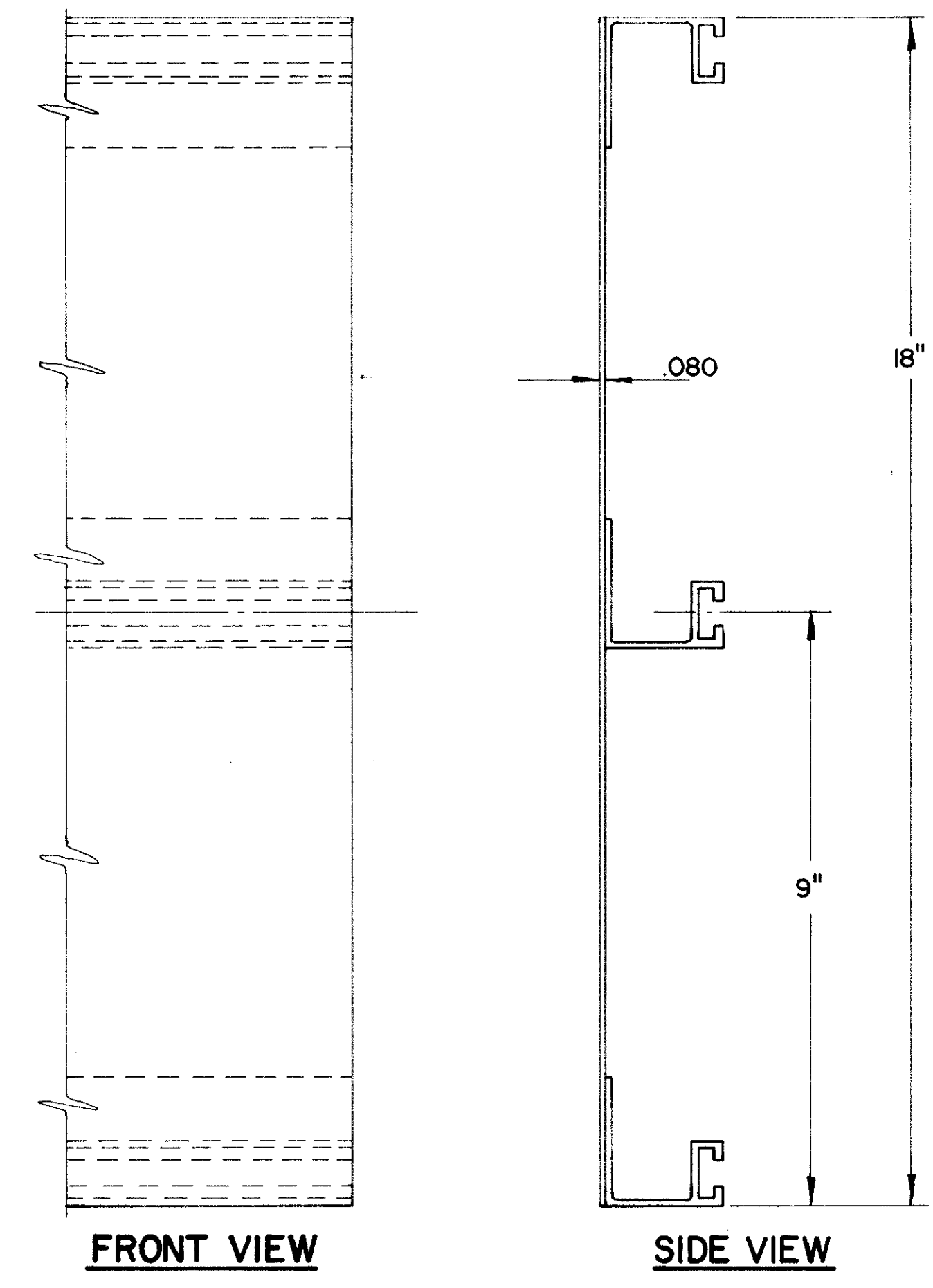


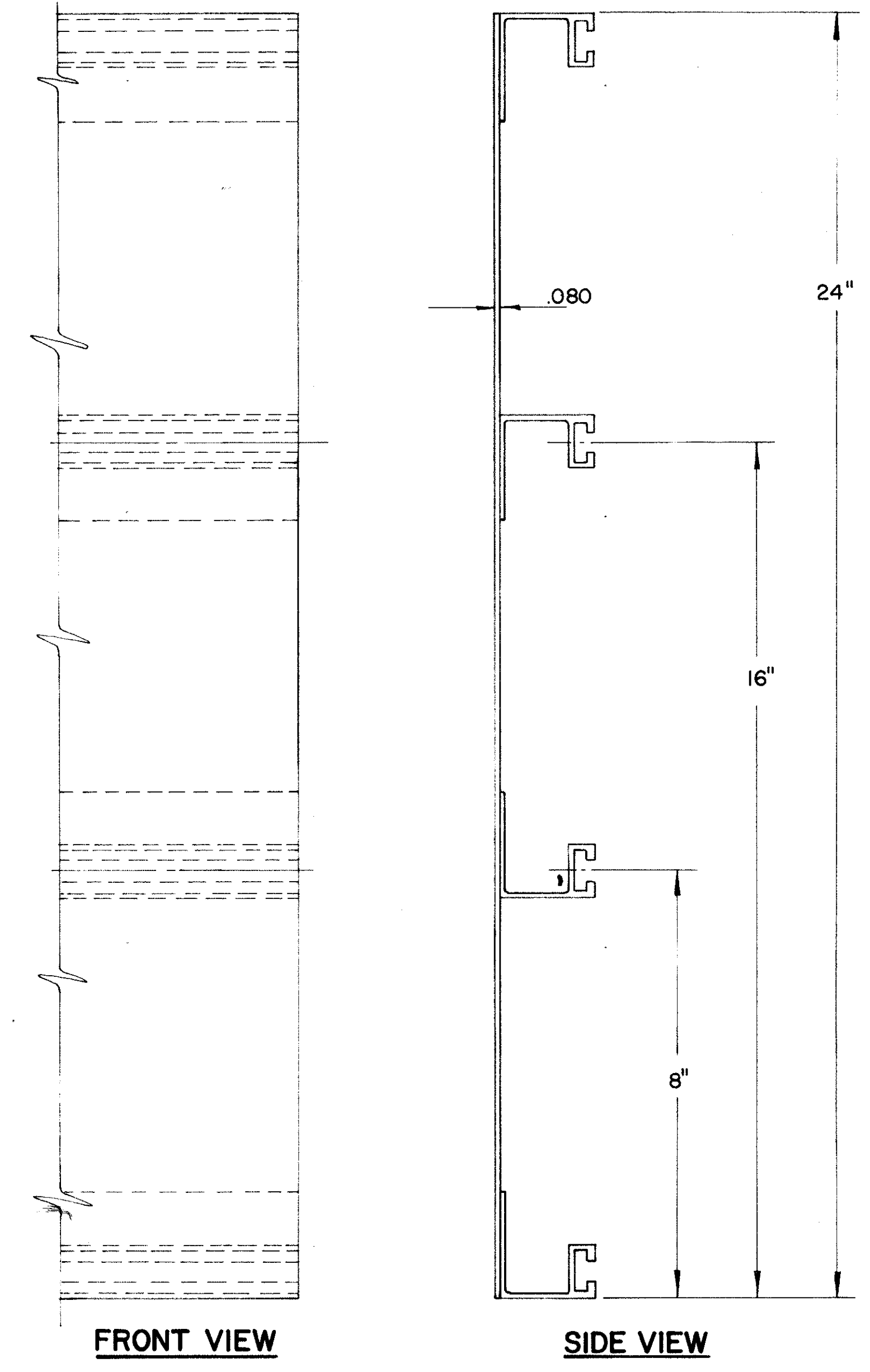
12" BOLTED-EXTRUSHEET PANEL



18" BOLTED-EXTRUSHEET PANEL



24" BOLTED-EXTRUSHEET PANEL



NOTES

EXTRU-SHEET PANELS SHALL BE ALUMINUM; SPOT WELDING, MATERIALS AND HARDWARE SHALL CONFORM WITH SPECIFICATION NO. 815

COMBINATIONS OF 12", 18" AND 24" PANELS ARE TO BE USED TO ATTAIN REQUIRED SIGN HEIGHT.

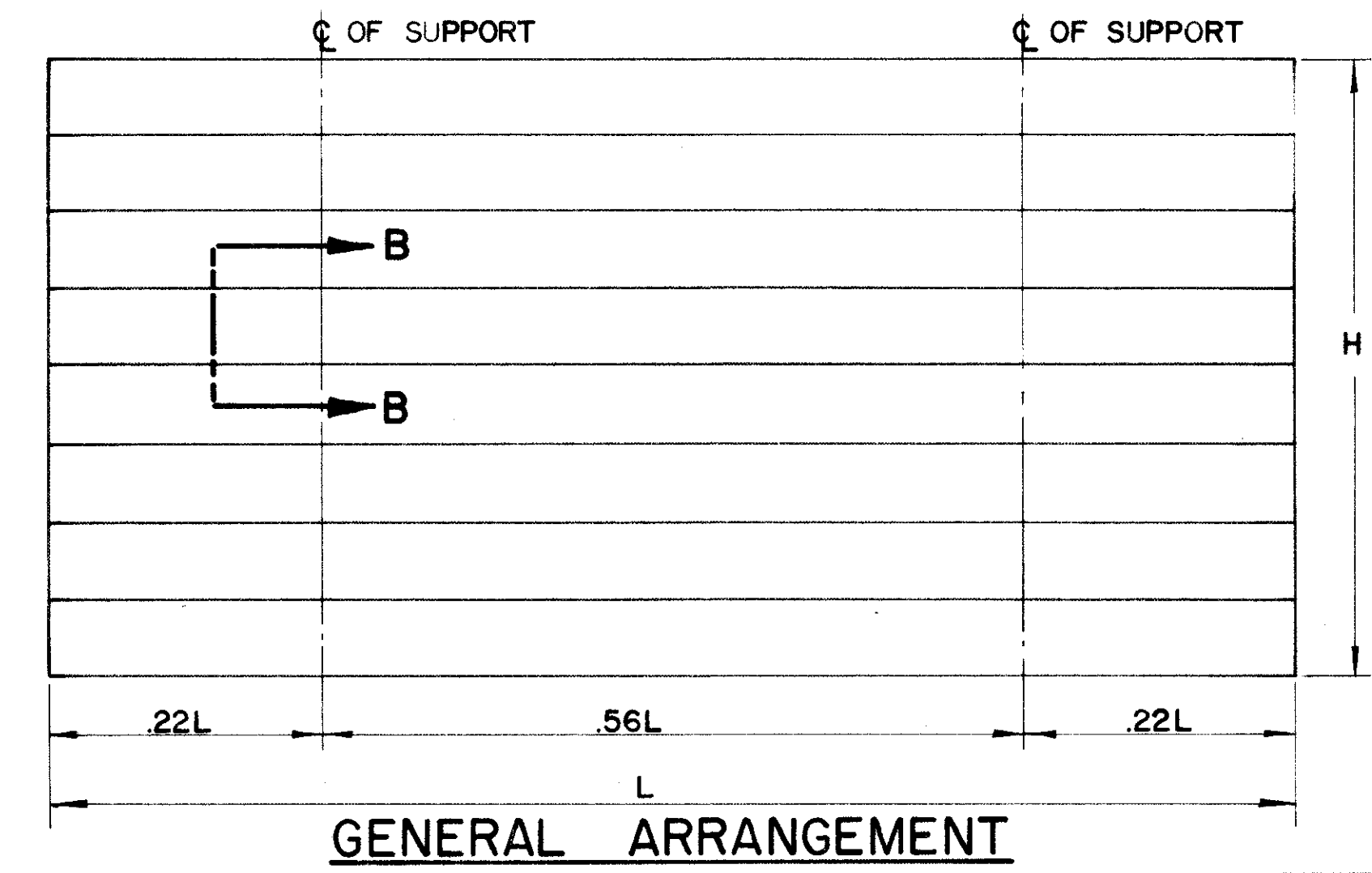
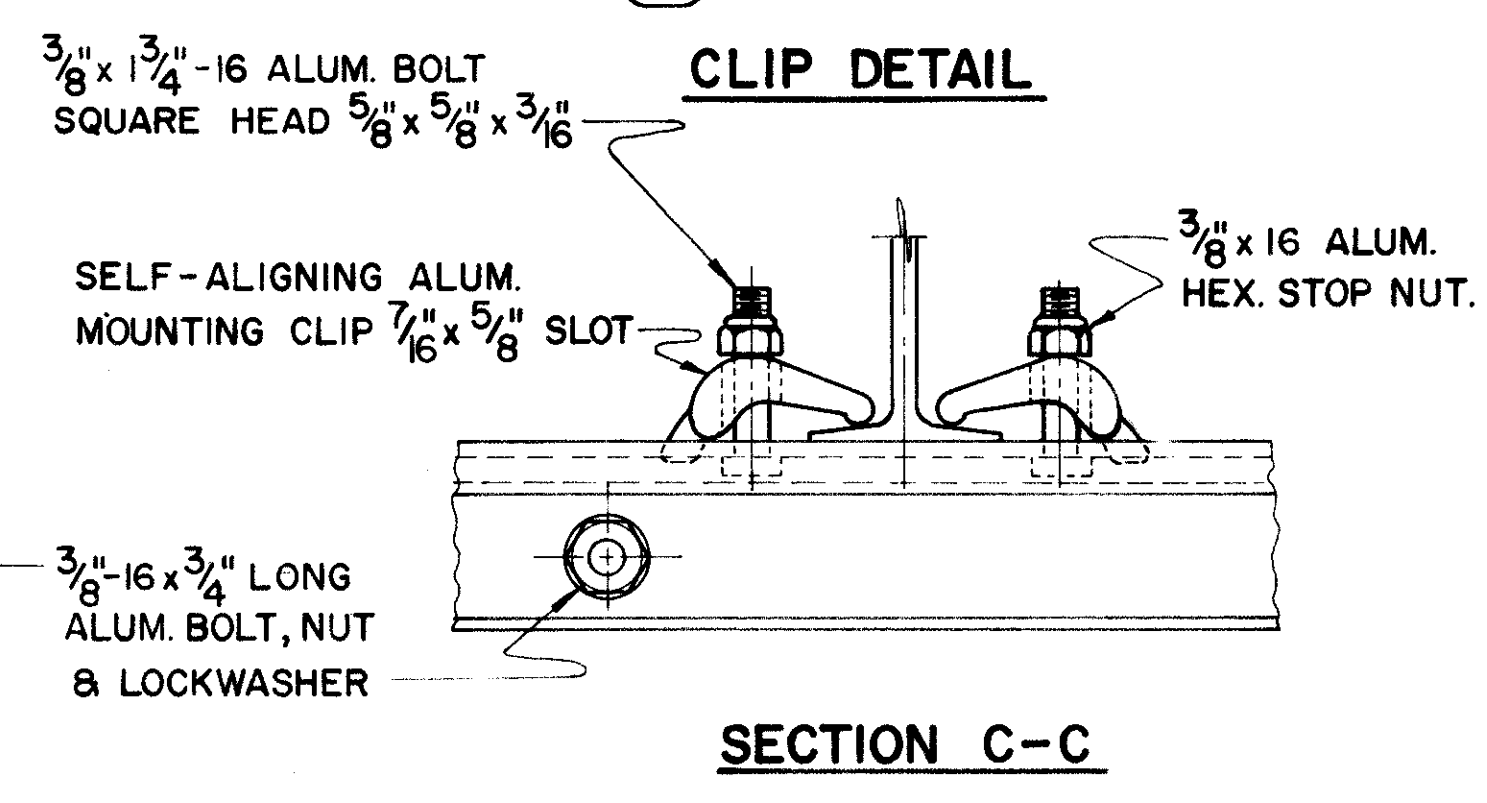
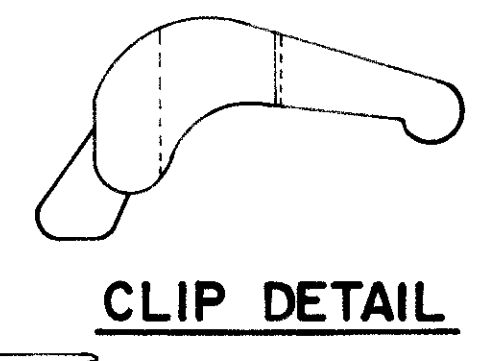
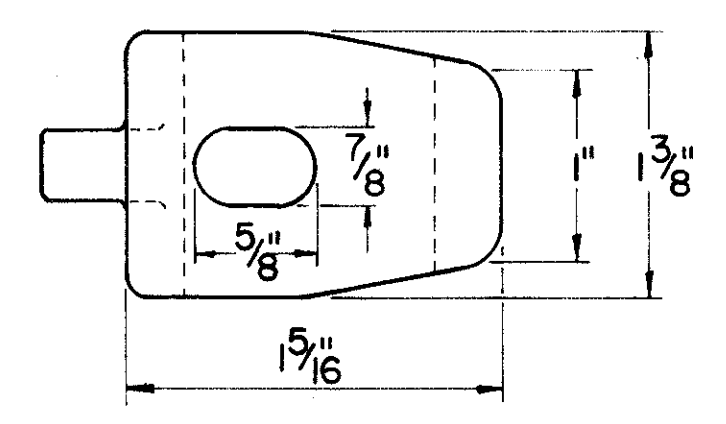
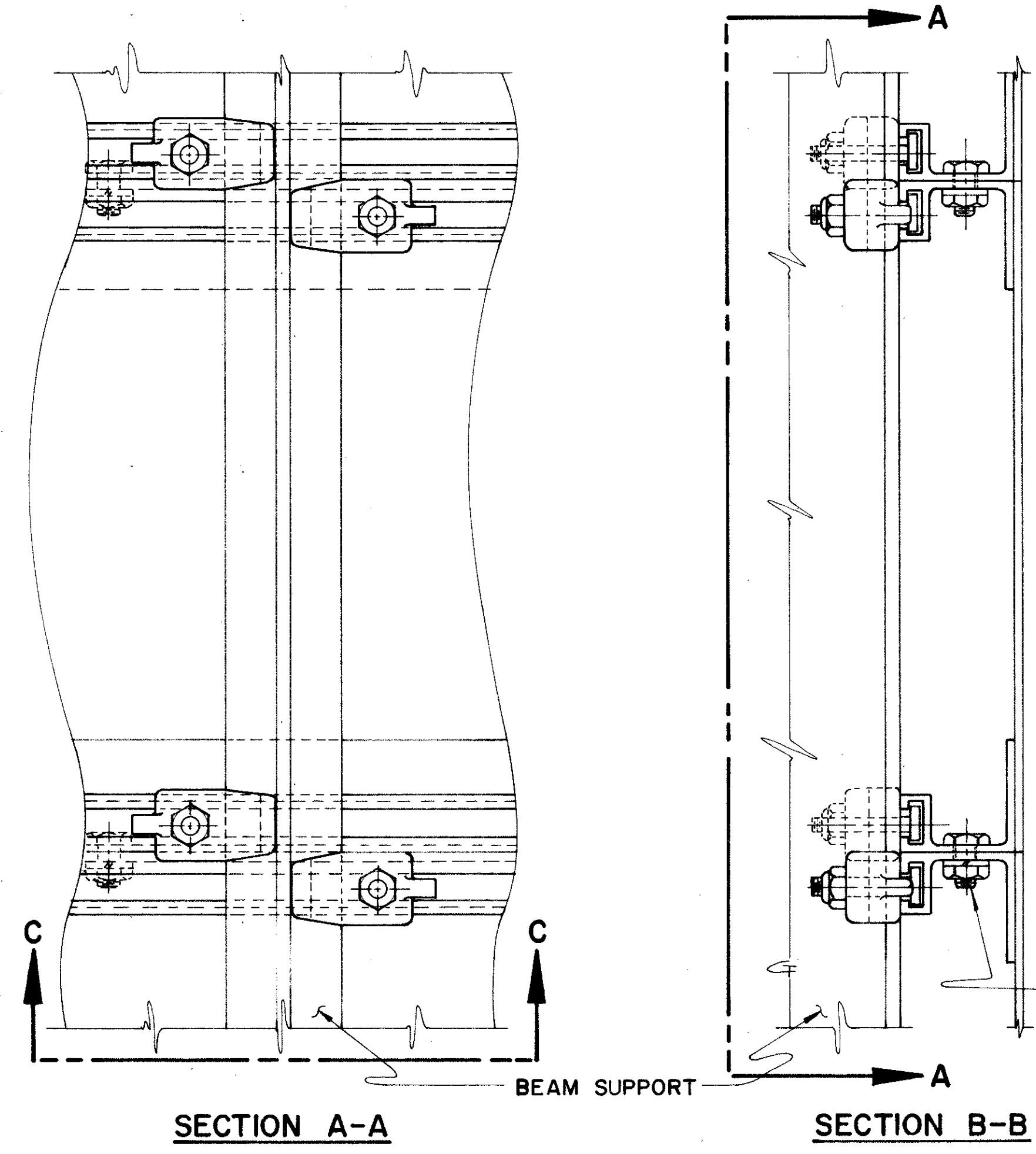
INDIVIDUAL PANELS SHALL BE THE SAME LENGTH AS THE HORIZONTAL LENGTH OF SIGN, WITH NO SPLICES.

THE PANELS SHALL BE ERECTED HORIZONTALLY AND BOLTED ON 24" CENTERS.

THE PANELS SHALL BE FASTENED TO EACH VERTICAL SUPPORT MEMBER WITH MOUNTING CLIPS; ALTERNATELY AT EACH HORIZONTAL EXTRUSION; BOTH SIDES AT EACH JOINT, AND BOTH SIDES AT TOP AND BOTTOM EDGES OF SIGN.

THE PANELS SHALL BE DESIGNED IN ACCORDANCE WITH THE A.A.S.H.O SPECIFICATION FOR THE DESIGN AND CONSTRUCTION OF STRUCTURAL SUPPORTS FOR HIGHWAY SIGNS, BASE ON A WIND LOAD OF 35#/SQ. FT.

THE MAXIMUM SIGN LENGTH FOR TWO SUPPORTS IS 19'-0". THE MAXIMUM SIGN LENGTH FOR THREE SUPPORTS IS 29'-0".



SPOT WELDS

PANEL SIZE	MAXIMUM SPOT WELD SPACING CENTER TO CENTER BETWEEN ROWS
12 INCH	4 INCH 10 INCH
18 & 24 INCH	4 INCH 8 INCH

BUREAU OF TRAFFIC
OHIO DEPARTMENT OF HIGHWAYS

ALUMINUM BOLTED EXTRUSHEET PANEL SIGN

APPROVED *Fred C. Taylor*
ENGINEER OF TRAFFIC

ECD
2

DATE
10-14-65