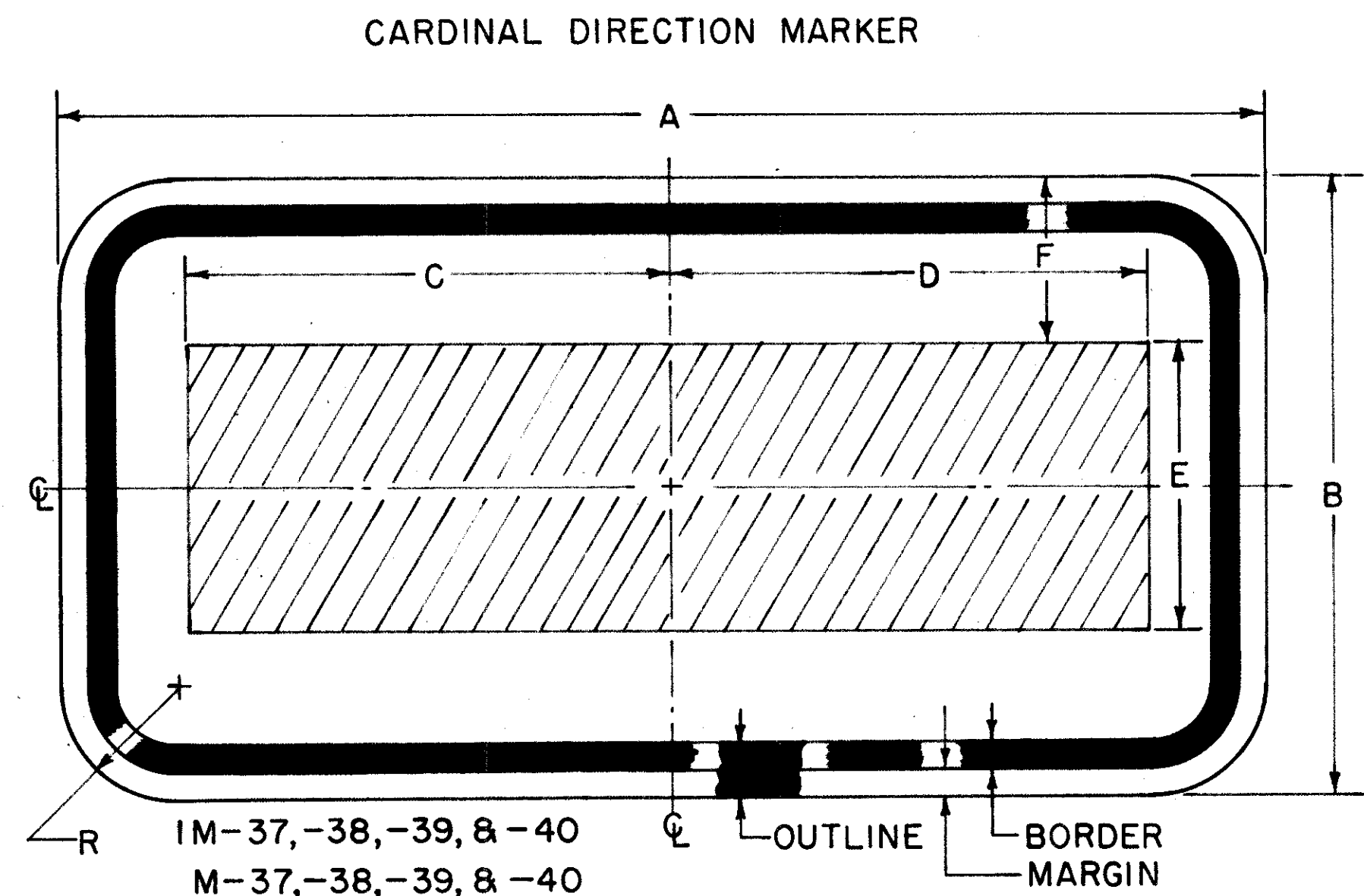


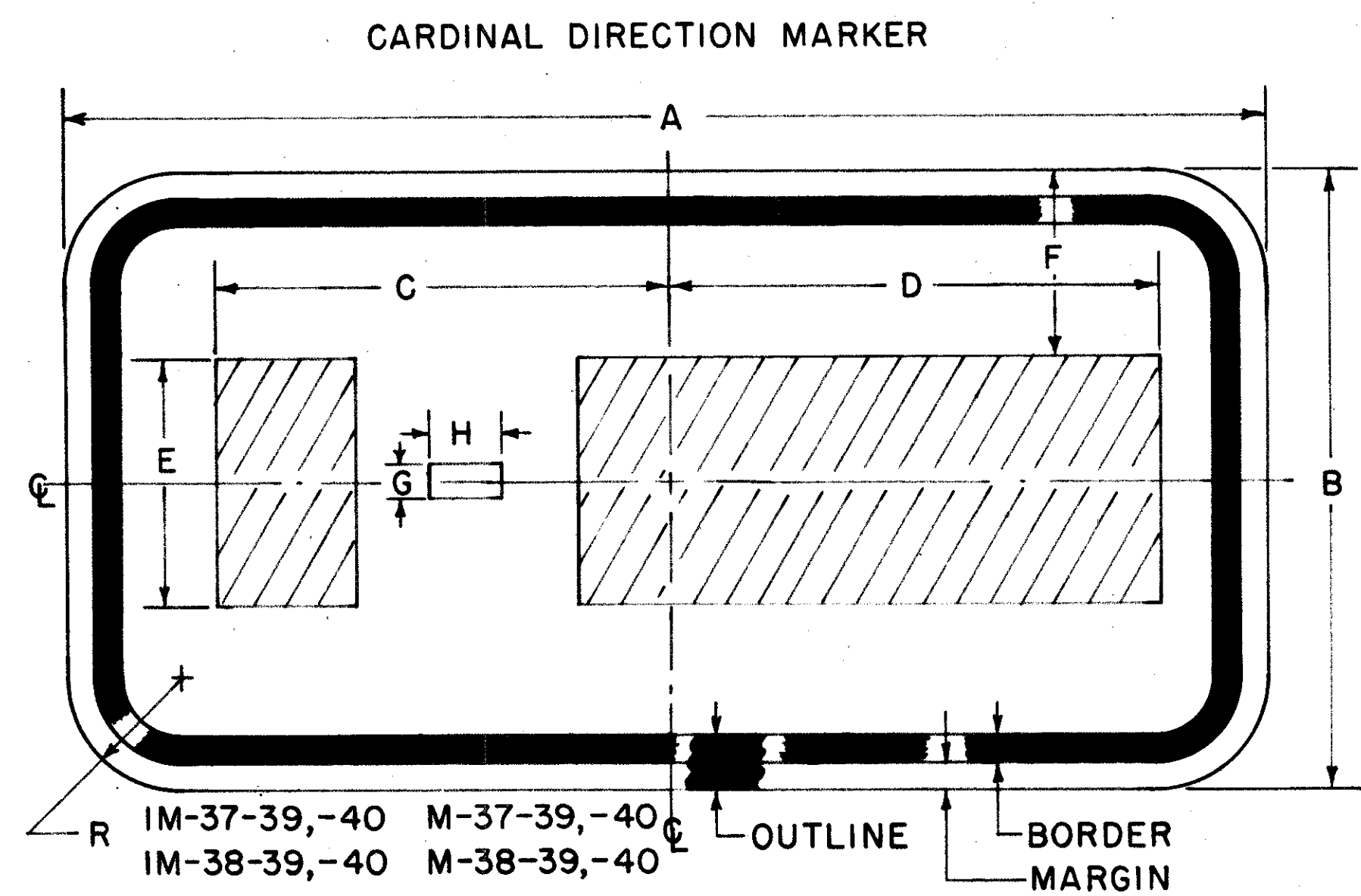
LAK-2-0.02



LEGEND	CODE NUMBER	VALUES			
		C	D	E	F
NORTH	IM-37-24 M-37-24	10	10	6"C	3
	IM-37-36 M-37-36	15 1/16	15 1/16	8"C	5
SOUTH	IM-38-24 M-38-24	10 3/32	9 21/32	6"C	3
	IM-38-36 M-38-36	15 1/8	14 1/8	8"C	5
EAST	IM-39-24 M-39-24	6 7/8	7 1/4	6"C	3
	IM-39-36 M-39-36	10 1/2	11	8"C	5
WEST	IM-40-24 M-40-24	7 13/16	8 1/8	6"C	3
	IM-40-36 M-40-36	11 29/32	12 7/32	8"C	5

	N	O	R	T	H
6"C	3.28	1.20	3.46	1.20	3.28 .50 3.00 .84 3.28
8"C	4.37	2.71	4.62	2.71	4.37 1.12 4.00 1.87 4.37
	S	O	U	T	H
6"C	3.28	.75	3.46	1.12	3.28 .75 3.00 .81 3.28
8"C	4.37	1.78	4.62	2.65	4.37 1.78 4.00 1.92 4.37

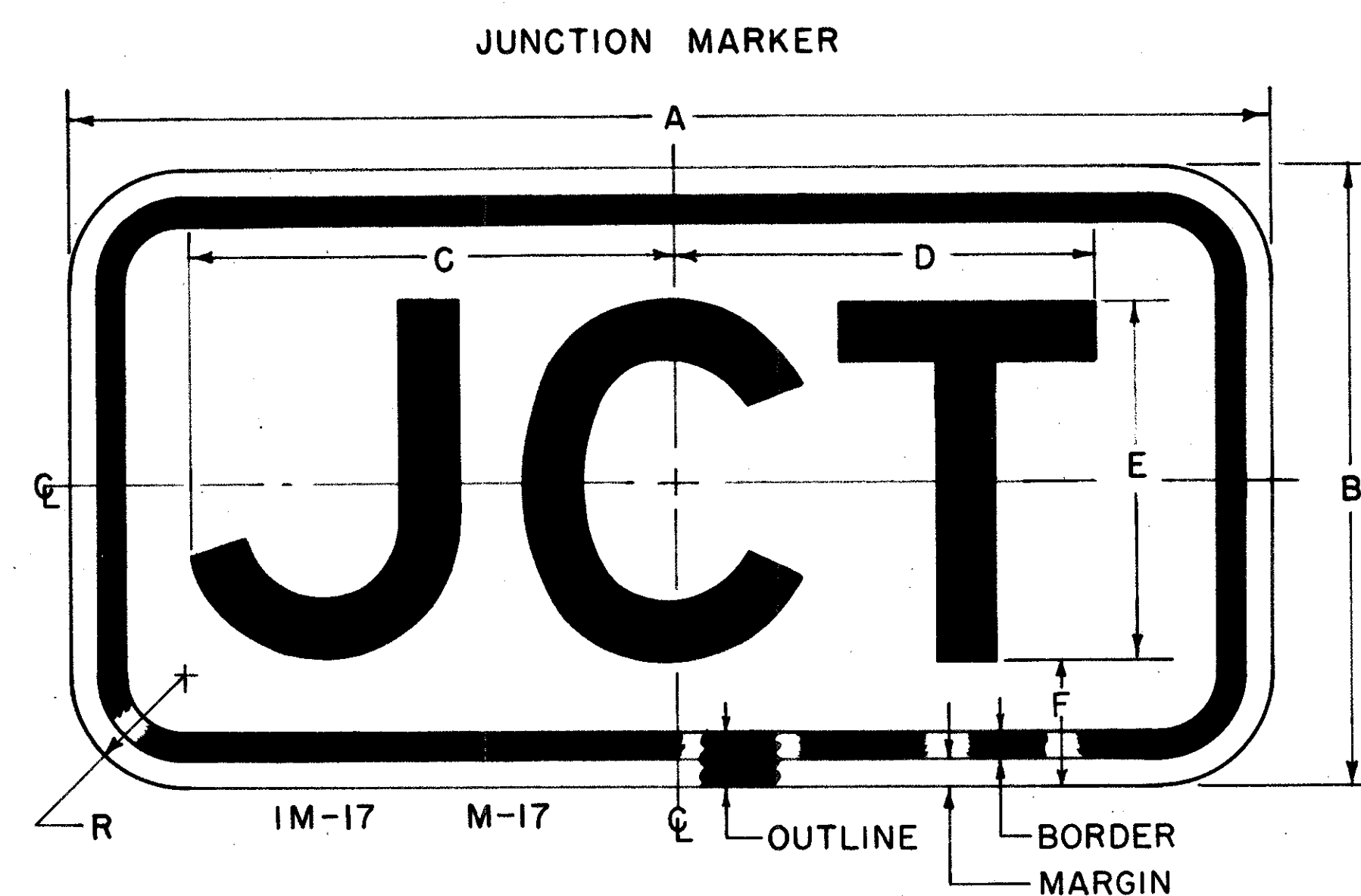
	E	A	S	T
6"C	3.00	.37	3.75	.30 3.28 .42 3.00
8"C	4.00	1.40	5.00	1.14 4.37 1.60 4.00
	W	E	S	T
6"C	4.50	1.06	3.00	.68 3.28 40 3.00
8"C	6.00	2.80	4.00	1.80 4.37 1.06 4.00



LEGEND	CODE NUMBER	VALUES					
		C	D	E	F	G	H
N-WEST	IM-37-40-24 M-37-40-24	10	10 21/32	6"C	3	7/8	1.25
	IM-37-40-36 M-37-40-36	14 1/2	15 3/8	8"C	5	1 1/8	2.00
N-EAST	IM-37-39-24 M-37-39-24	9 13/16	10 1/2	6"C	3	7/8	1.25
	IM-37-39-36 M-37-39-36	14 5/32	15	8"C	5	1 1/8	2.00
S-WEST	IM-38-40-24 M-38-40-24	10 5/16	10 17/32	6"C	3	7/8	1.31
	IM-38-40-36 M-38-40-36	14 7/16	14 3/4	8"C	5	1 1/8	2.00
S-EAST	IM-38-39-24 M-38-39-24	10 3/16	10 3/8	6"C	3	7/8	1.31
	IM-38-39-36 M-38-39-36	14 3/8	14 5/8	8"C	5	1 1/8	2.00

	N	-	W	E	S	T
6"C	3.28	.56	1.25	.28	4.25 .87 3.00 .56 3.28 .31 3.00	
8"C	4.37	1.11	2.00	.56	6.00 1.72 4.00 1.11 4.37 .61 4.00	
	N	-	E	A	S	T
6"C	3.28	.87	1.25	.87	3.00 .31 3.75 .31 3.28 .37 3.00	
8"C	4.37	1.75	2.00	1.75	4.00 .62 5.00 .62 4.37 .75 4.00	
	S	-	W	E	S	T
6"C	3.28	.50	1.31	.25	4.50 .87 3.00 .56 3.28 .31 3.00	
8"C	4.37	.90	2.00	.44	6.00 1.54 4.00 .99 4.37 .55 4.00	
	S	-	E	A	S	T
6"C	3.28	.87	1.31	.93	3.00 .37 3.75 .36 3.28 .43 3.00	
8"C	4.37	1.56	2.00	1.64	4.00 .66 5.00 .63 4.37 .76 4.00	

NOTES:
THE JUNCTION OR CARDINAL DIRECTION MARKER IS MOUNTED DIRECTLY ABOVE THE APPROPRIATE ROUTE MARKER FORMING A JUNCTION OR CARDINAL DIRECTION ASSEMBLY.
* JUNCTION OR CARDINAL DIRECTION MARKERS MOUNTED ABOVE INTERSTATE ROUTE MARKERS WILL HAVE A WHITE LEGEND AND OUTLINE ON A BLUE BACKGROUND AND A CODE NUMBER PRECEDED BY THE LETTER "I".
ALL DIMENSIONS ARE IN INCHES UNLESS OTHERWISE SHOWN.



	J	C	T
8"D	5.00	1.62	5.37 .75 4.87
12"D	7.50	2.43	8.06 1.12 7.31

CODE NUMBER	VALUES			
	C	D	E	F
IM-17-24 M-17-24	9 1/16	8 7/16	8"D	2
IM-17-36 M-17-36	13 19/32	12 21/32	12"D	3

CODE NUMBER	ROUTE MARKER SIZE	VALUES					
		A	B	R	BORDER	MARGIN	OUTLINE
M-(**)-24	24	24	12	1 1/2	3/8	3/8	—
IM-(**)-24	24	24	12	1 1/2	—	—	3/4
M-(**)-36	36	36	18	1 1/2	1/2	1/2	—
IM-(**)-36	36	36	18	1 1/2	—	—	1

(**) VARIES WITH TYPE LEGEND OR SYMBOL ON PLATE

BUREAU OF TRAFFIC
OHIO DEPARTMENT OF HIGHWAYS

TRAFFIC SIGNS

MC

DATE 2-25-65

APPROVED _____
ENGINEER OF TRAFFIC