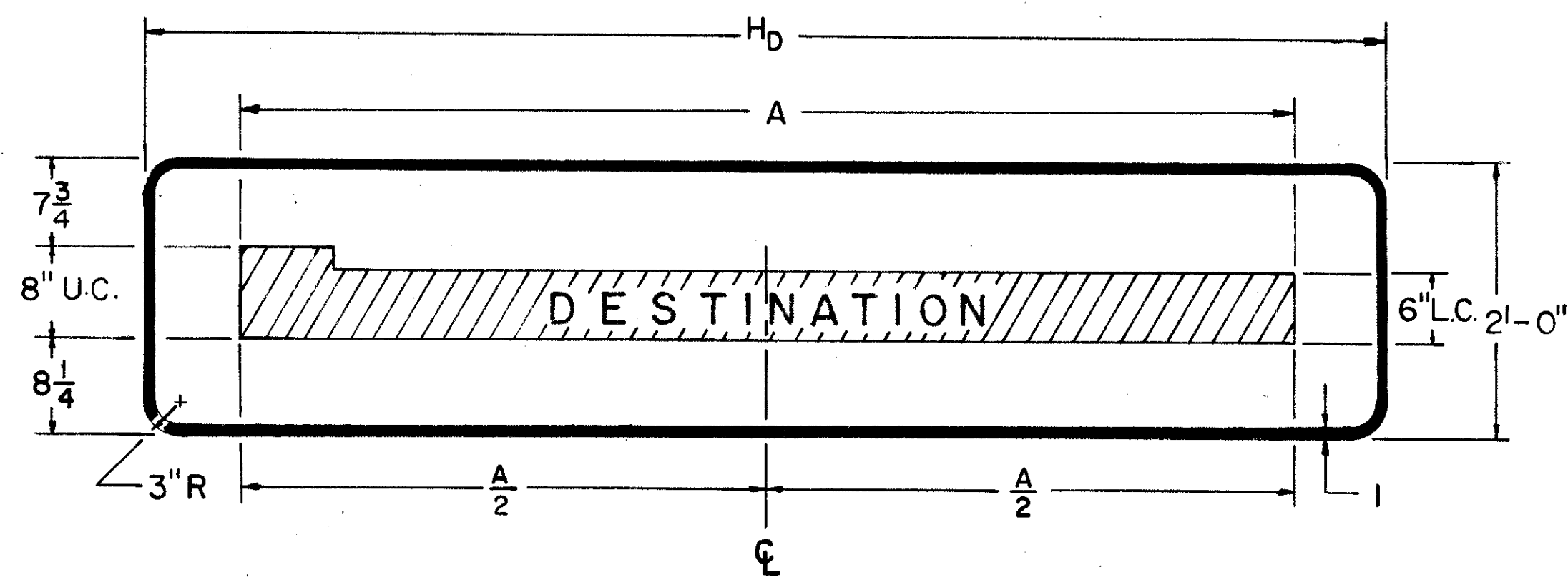
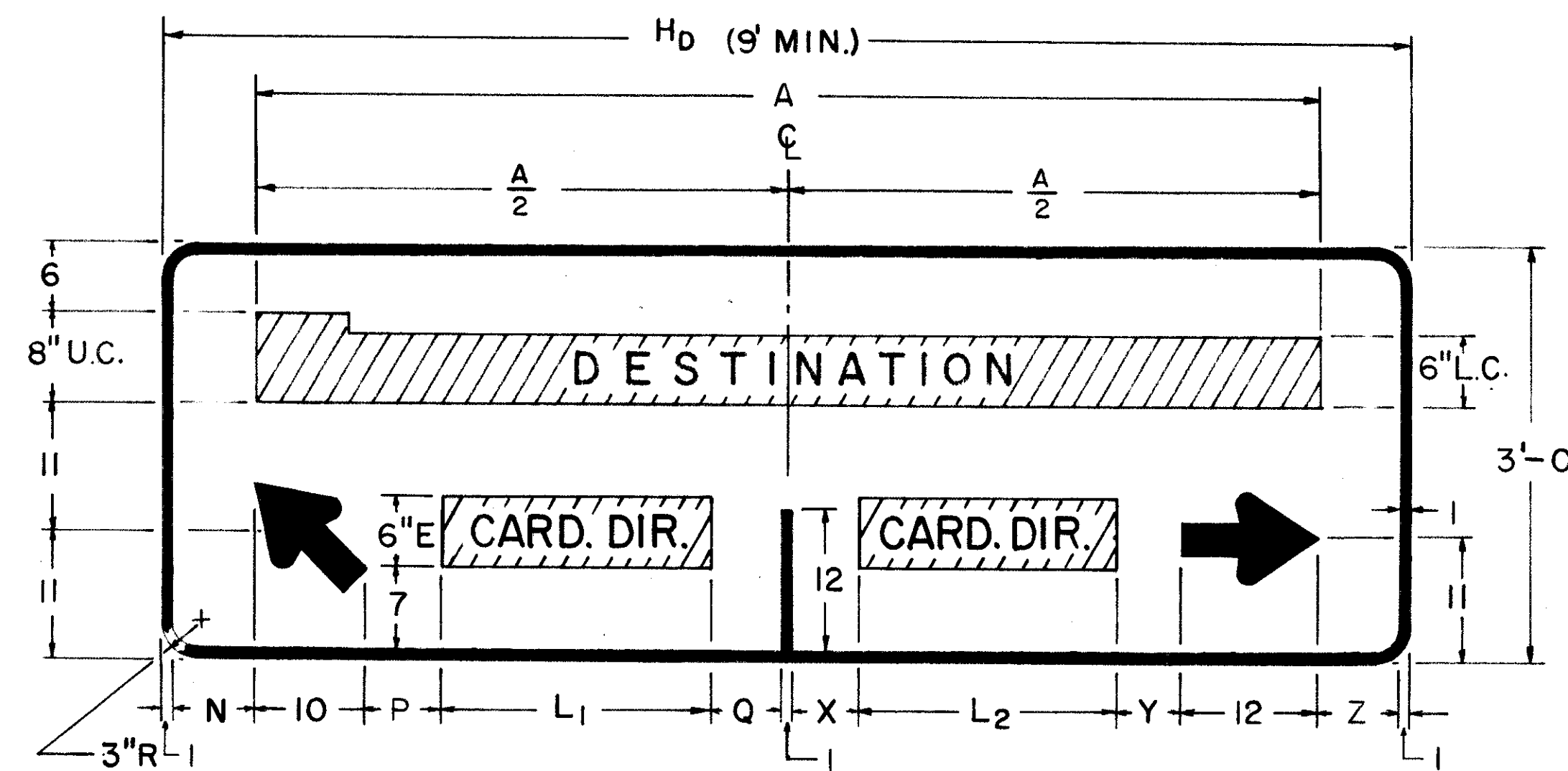


D-4A



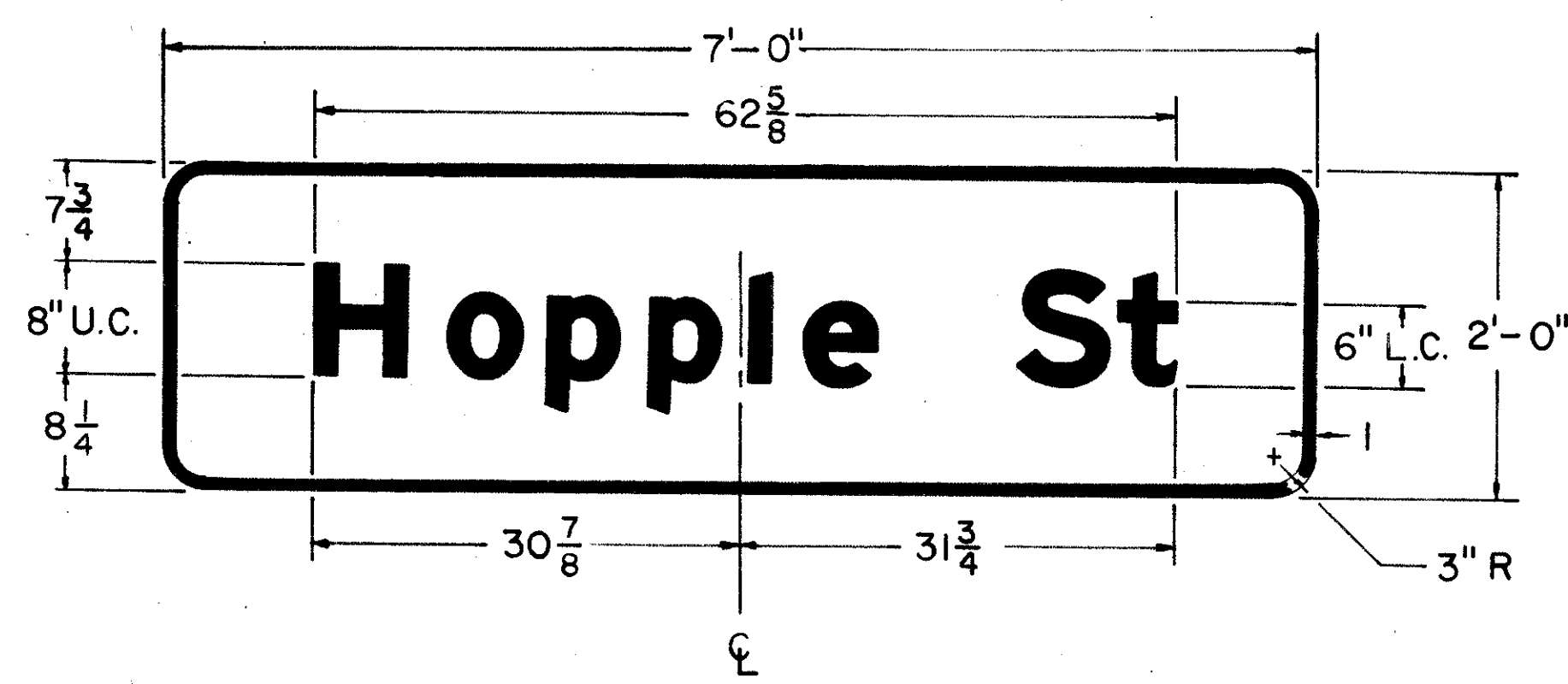
D-4B



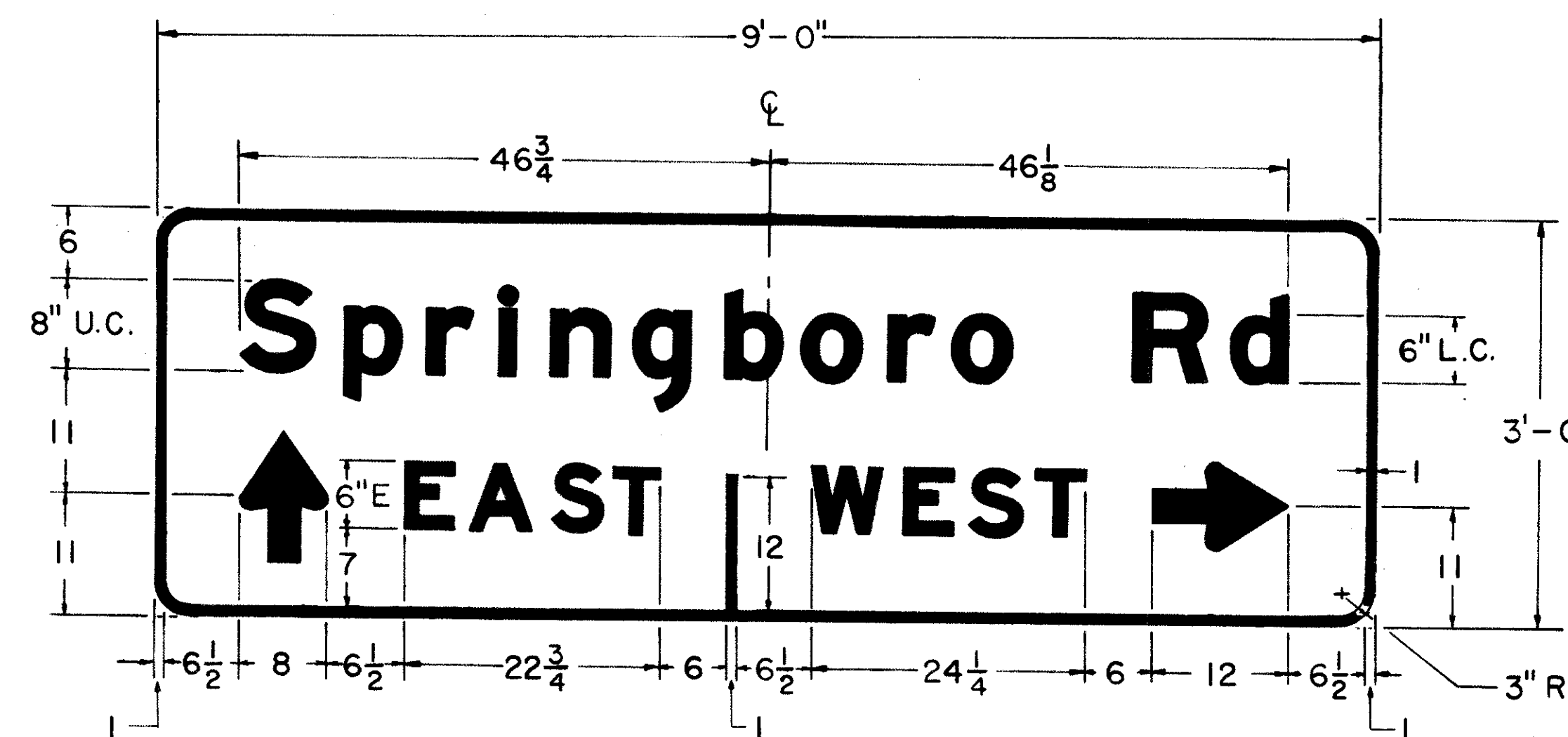
	E	A	S	T	TOTAL					
6"E	4.25	1.50	5.25	1.50	4.75	1.25	4.25	22 3/4		
	W	E	S	T	TOTAL					
6"E	6.25	2.00	4.25	1.50	4.75	1.25	4.25	24 1/4		
	N	O	R	T	H	TOTAL				
6"E	4.62	1.06	5.00	1.06	4.75	.68	4.25	.93	4.62	27
	S	O	U	T	H	TOTAL				
6"E	4.75	.68	5.00	1.06	4.62	.93	4.25	.93	4.62	26 7/8

WHEN H_D IS LARGER THAN 9'-0", USE SPACINGS SHOWN BELOW FOR NORTH AND SOUTH:

	N	O	R	T	H	TOTAL				
6"E	4.62	2.12	5.00	2.12	4.75	1.37	4.25	1.87	4.62	30 3/4
	S	O	U	T	H	TOTAL				
6"E	4.75	1.37	5.00	2.12	4.62	1.87	4.25	1.87	4.62	30 1/2

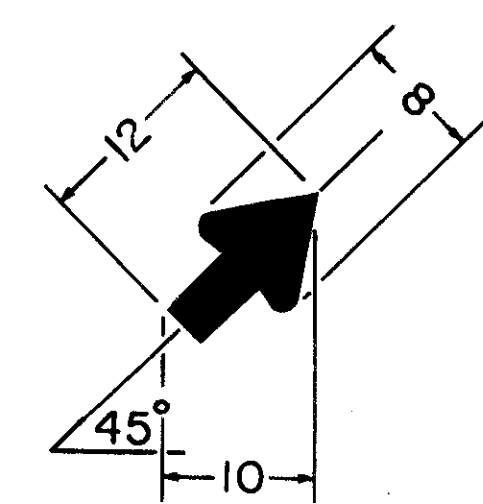


TYPICAL SIGN



TYPICAL SIGN

NOTES:
H_D IS VARIABLE. TO FIND H_D:
H_D = A + 20". FOR D-4B SIGNS, H_D SHALL NEVER BE LESS THAN 9'-0"
SPACES N, P, Q, X, Y, AND Z ARE ALWAYS EQUAL.
*ADD OR SUBTRACT UP TO 6" TO KEEP H_D TO EVEN FOOT.
ALL DIMENSIONS ARE IN INCHES UNLESS OTHERWISE SHOWN.



BUREAU OF TRAFFIC OHIO DEPARTMENT OF HIGHWAYS	
TRAFFIC SIGNS	D-4A D-4B
APPROVED _____	DATE 1-28-66
ENGINEER OF TRAFFIC	