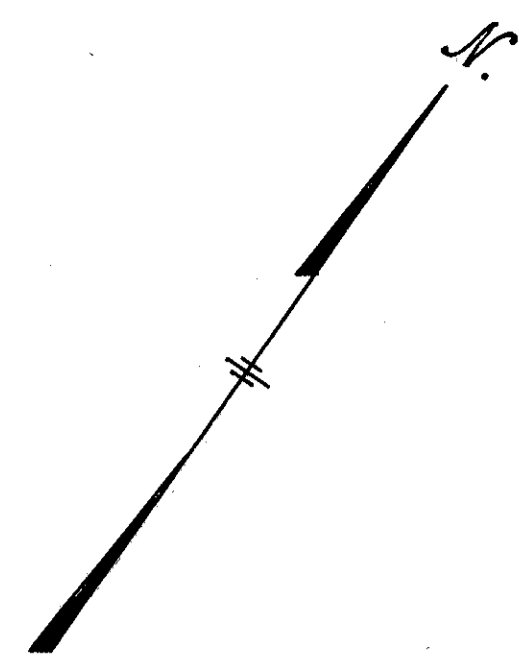


FED. RD. DIVISION	STATE	PROJECT	FISCAL YEAR
2	OHIO		

121  
394

**LAKE COUNTY**  
**LAK-2-0.00**  
LIMITED ACCESS



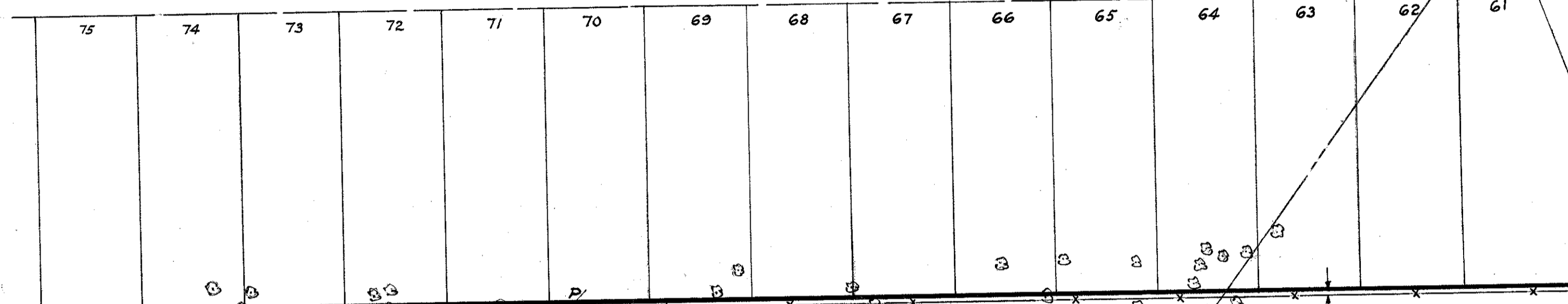
LAKELAND - WORDEN Subdivision N<sup>o</sup> 2  
Rec. Vol. J - Page 110

**TRUMAN AVE. 50'**  
Accepted by WICKLIFFE CITY Resolution N<sup>o</sup> 1956-11

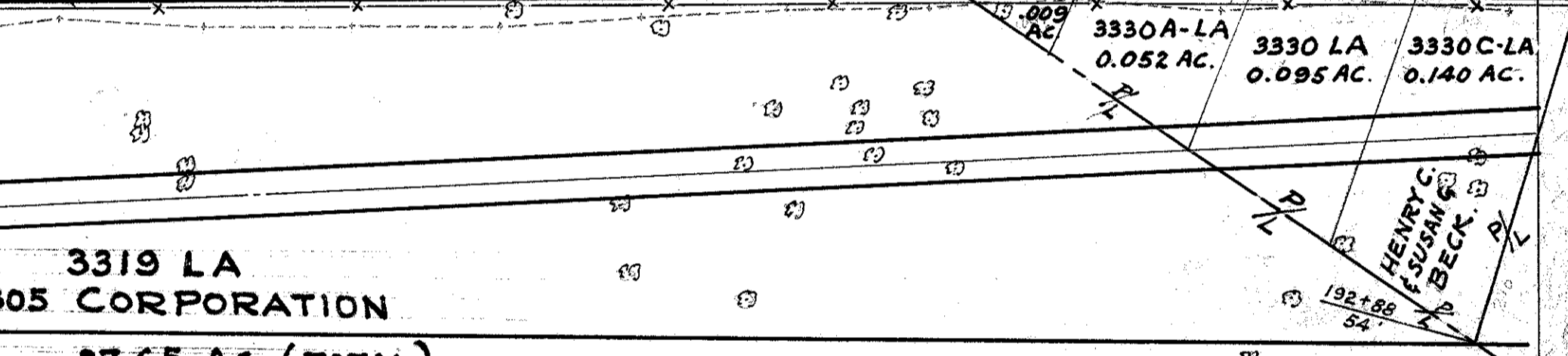
REGENT RD.

FOREST GROVE RD 50'

CITY OF WICKLIFFE  
CITY OF WILLOWICK



3319 LA  
305 CORPORATION



RAMP 5

3319 LA  
305 CORPORATION  
27.65 AC (TOTAL)

LAKELAND FREEWAY

3319 LA  
305 CORPORATION

RAMP 6

EXISTING

LAKELAND

BLVD.

80'

± LAKELAND FREEWAY CURVE DATA

Δ	= 1° 30' 00"
DL	= 0° 15'
LI	= 600.00
TRI	= 22,918.320
TT	= 300.017
CC	= 599.983
E	= 1.964

TRACT 12 LLOYD LOT  
TRACT 11 O.L. II

P.T. STA. 182+59.767

P.C. STA. 176+53.787

P.C. STA. 193+11.271

Rev: 9-17-59

3330 LIN. FT. SS-18 FENCE TYPE "C"

Scale: 1" = 50'