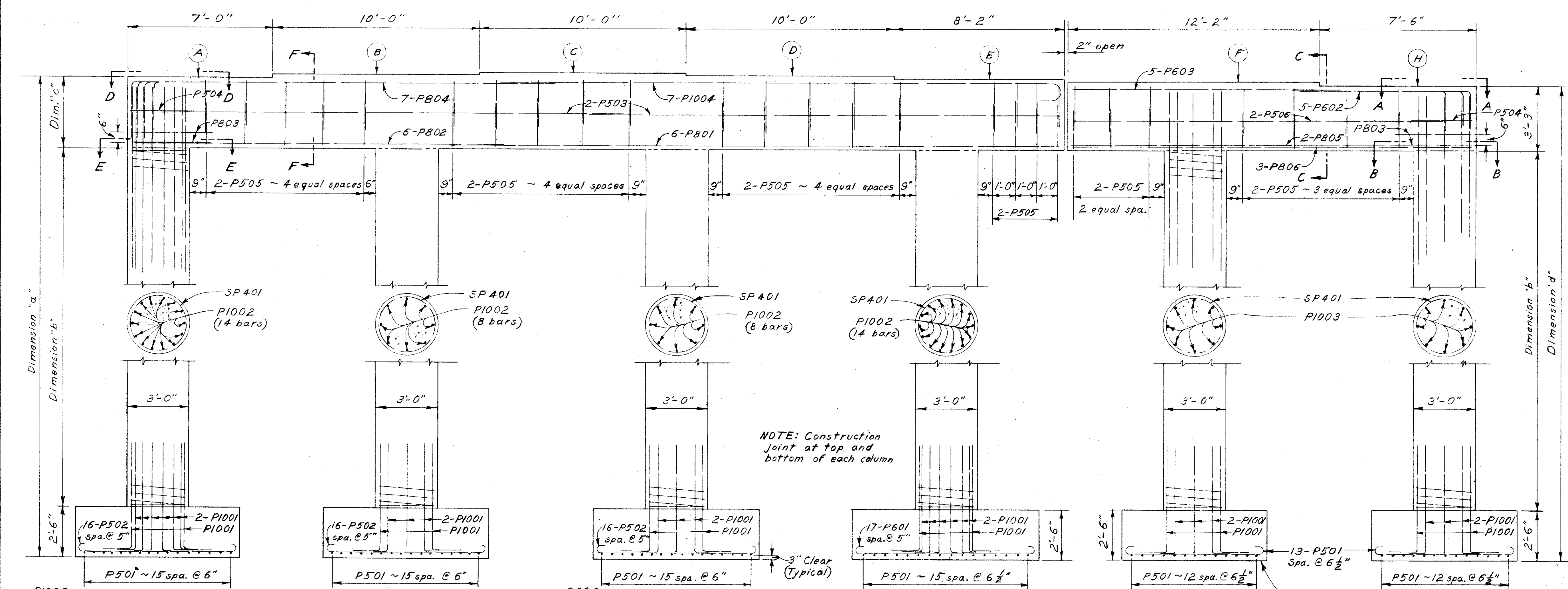


PLAN

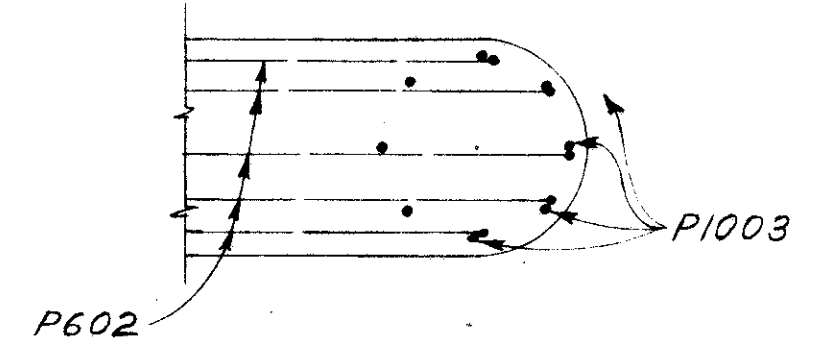


ELEVATION

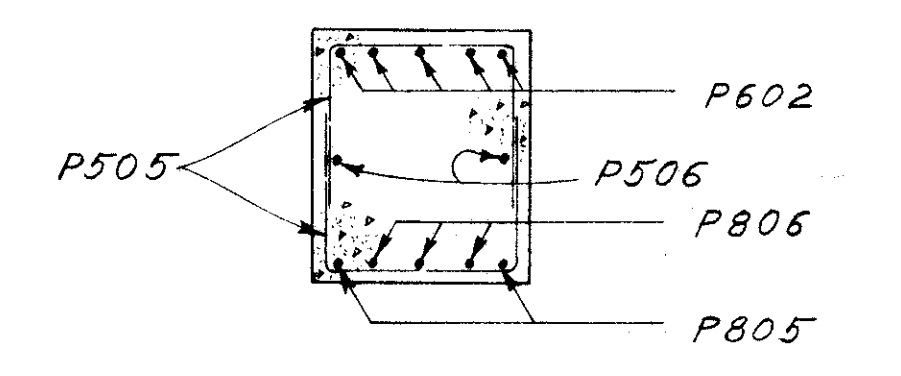
NOTE: Construction joint at top and bottom of each column

North for Piers 1 and 3

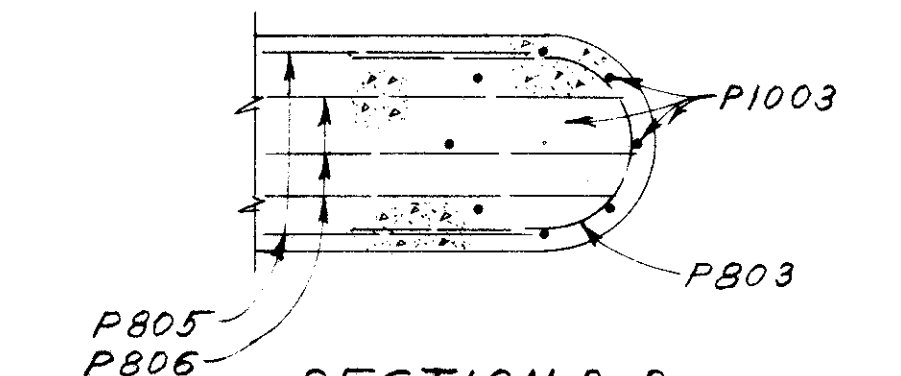
North for Piers 2 and 4



VIEW A-A



SECTION C-C



SECTION B-B

NOTES

CONCRETE shall be Class "C" for caps and columns and Class "E" for the footings.

REINFORCING BARS in the cap shall be placed with care to avoid interference with bearing anchor bars.

PIER DETAILS

BRIDGE No. LAK-2-0255 L&R  
OVER CAMPBELL ROAD

LAKE COUNTY Sta. 234 + 69.16  
Sta. 235 + 17.50

	Dim. "a"	Dim. "b"	Dim. "c"	Dim. "d"	Elev. A	Elev. B	Elev. C	Elev. D	Elev. E	Elev. F	Elev. H
Pier #1	23'-8 1/2"	17'-7 1/2"	3'-7 1/2"	23'-4 1/2"	656.72	656.85	656.96	656.82	656.67	656.53	656.38
Pier #2	23'-8 1/2"	17'-8 1/2"	3'-6 1/2"	23'-5 1/2"	656.74	656.88	657.01	656.87	656.74	656.61	656.47
Pier #3	23'-8"	17'-7 1/2"	3'-6 1/2"	23'-4 1/2"	656.67	656.80	656.93	656.79	656.66	656.52	656.38
Pier #4	23'-7 1/2"	17'-6 1/2"	3'-7"	23'-3 1/2"	656.66	656.78	656.90	656.76	656.61	656.47	656.32