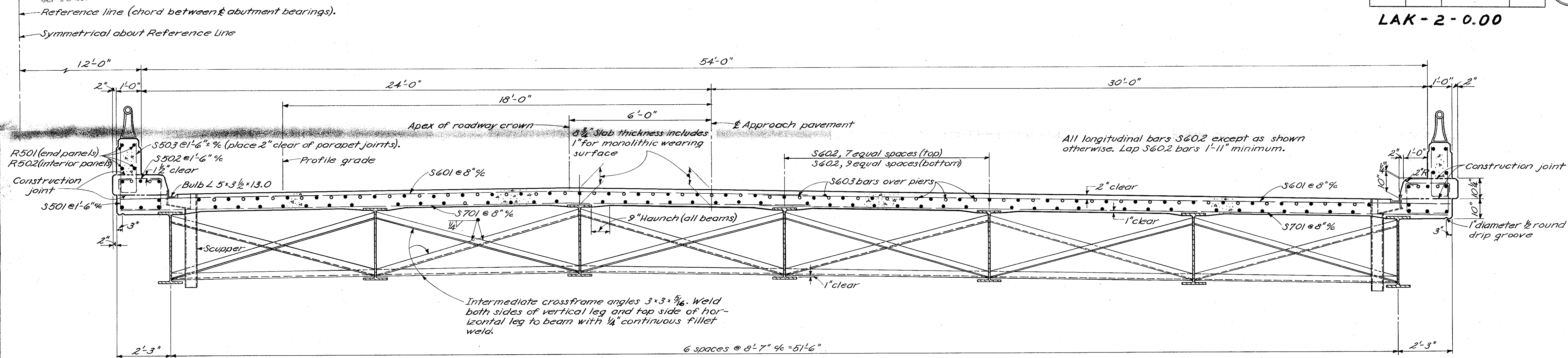


MICROFILMED
SEP 18 1986

FED. RD. DIVISION	STATE	PROJECT	355 394
2	OHIO		

LAK-2-0.00



TRANSVERSE SECTION
EAST BOUND LANES SHOWN

For additional parapet and railing details see Common Details, Sheet No. 393A

For additional superstructure details see Common Details, Sheet No. 394 & 393A

TRANSVERSE REINFORCING BARS shall be placed parallel to abutments.

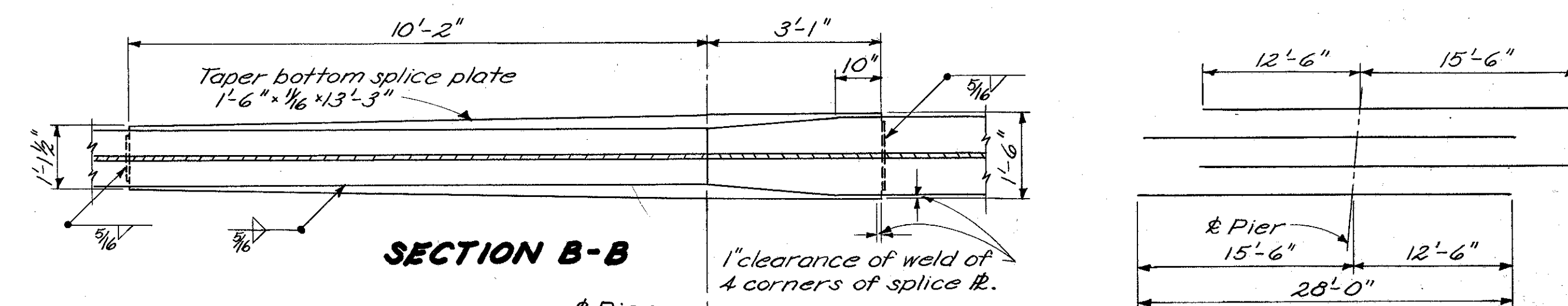
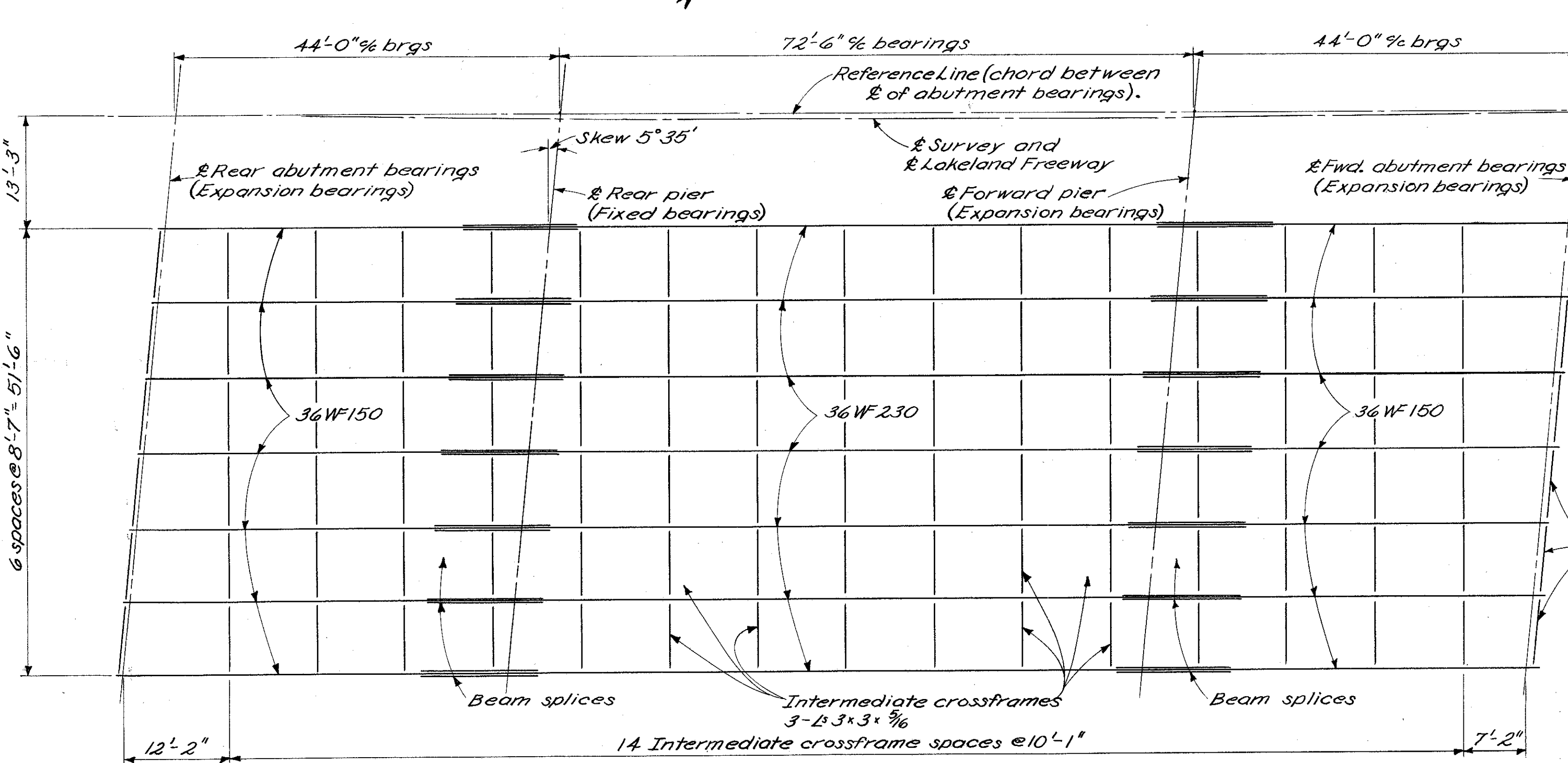


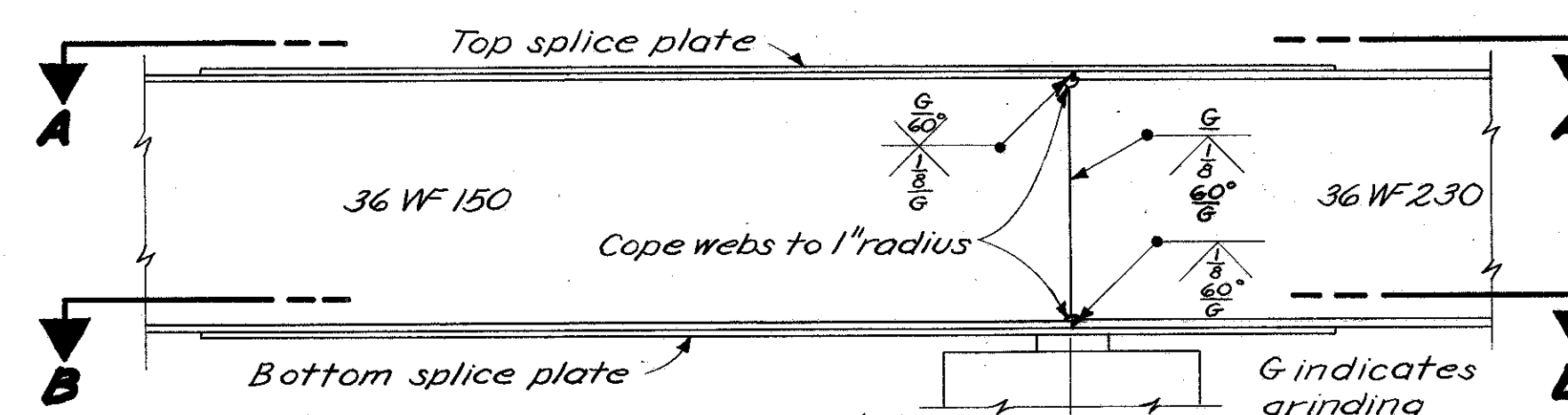
DIAGRAM SHOWING STAGGER OF S603 BARS OVER PIERS

BEAM SPLICE WELDING PROCEDURE:

1. Raise the abutment ends of the beams $\frac{1}{16}$."
2. Butt-weld the beam flanges and web, using the following sequence: make one pass on each flange, then one on the web; repeat until welds are completed.
3. Weld the bottom and top moment plates.
4. Lower the beam ends to final position.



STEEL FRAMING PLAN
(East Bound Lanes shown - West Bound Lanes similar)



BEAM SPLICE DETAILS

DEFLECTION AND CAMBER

LOCATION	BEAM SPAN	OUTSIDE		INSIDE	
		End	Middle	End	Middle
Deflection due to weight of steel		0	1/8"	0	1/8"
Deflection due to remaining dead load		0	1/2"	0	1/2"
Convexity required for vertical curve		1/16"	3/16"	1/16"	3/16"
Sum of deflection and convexity		1/16"	13/16"	1/16"	13/16"
Required camber		0	1"	0	1"

BEARING PLATE DIMENSIONS: On Common Details, Sheet No. 394, the "M" dimension for abutment bearing plates is 12" and the "M" dimension for pier bearing plates shall be taken as 15 3/4".

SUPERSTRUCTURE DETAILS

BRIDGE No. LAK-2-0181 L & R
OVER RUSH ROAD

LAKE COUNTY STA. 195+14.24
196+79.26

DESIGNED	DRAWN	TRACED	CHECKED	REVIEWED	DATE	REVISED
DGM	DGM	R. W. L.	OFM	BFG		

STATE OF OHIO
DEPARTMENT OF HIGHWAYS
DIVISION OF DESIGN AND CONSTRUCTION
BUREAU OF BRIDGES