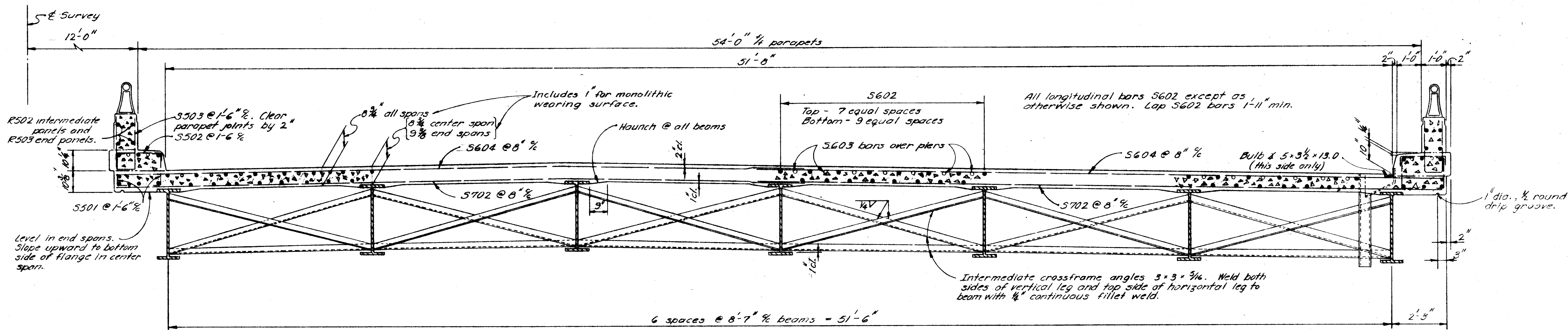


MICROFILMED
SEP 17 1986

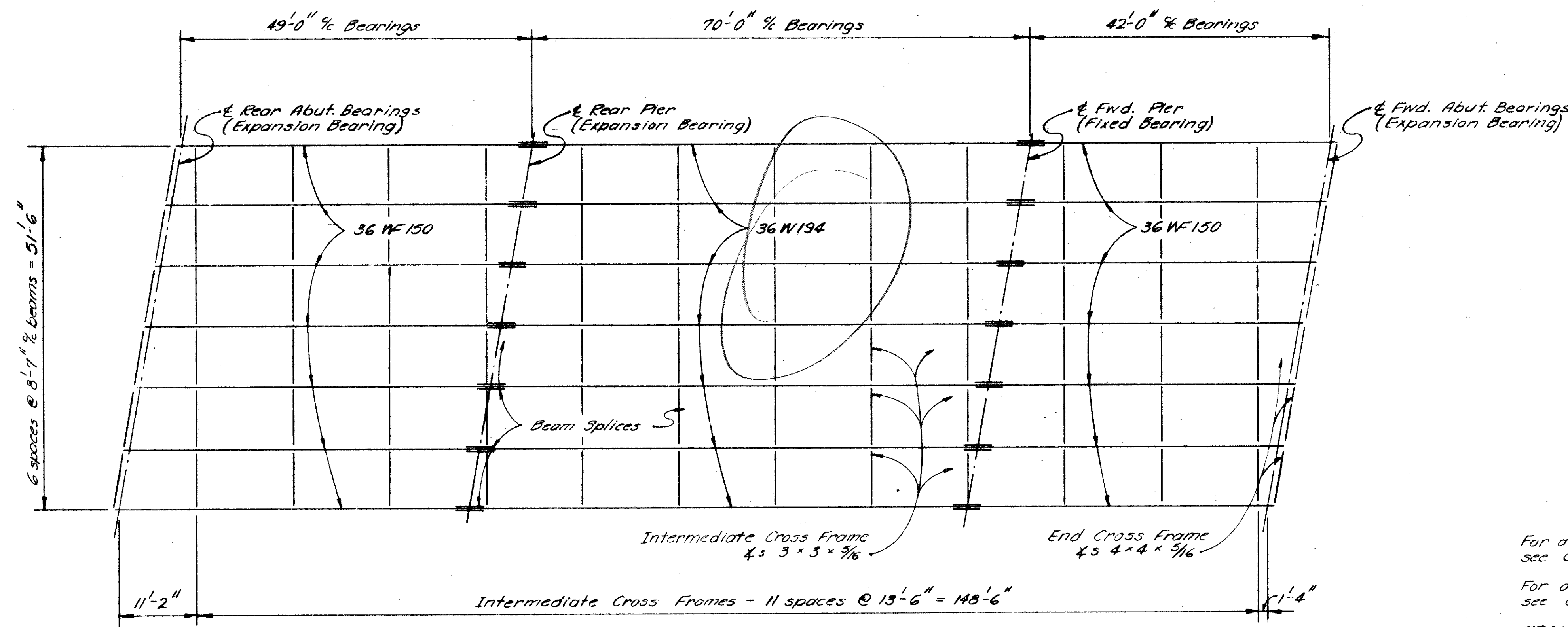
FED. RD. DIVISION	STATE	PROJECT
2	OHIO	

335
394

LAK-2-0.00



TRANSVERSE SECTION



STEEL FRAMING PLAN

Location	Outside beams			Inside beams		
	49' Span	70' Span	42' Span	49' Span	70' Span	42' Span
Deflection due to weight of steel	0	1/8"	0	0	1/8"	0
Deflection due to remaining dead load	1/8"	7/16"	0	1/8"	7/16"	0
Convexity required for vertical curve	1/8"	1/4"	1/8"	1/8"	1/4"	1/8"
Sum of Deflection and Convexity	1/4"	13/16"	1/8"	1/4"	13/16"	1/8"
Required Camber	0	1"	0	0	1"	0

For additional parapet and railing details see Common Details, Sheet No. 393A

For additional superstructure details see Common Details, Sheet No. 394

TRANSVERSE REINFORCING BARS shall be placed parallel to abutments.

See Sheet No. 336 for details of stagger of S603 bars over piers

STATE OF OHIO
DEPARTMENT OF HIGHWAYS
DIVISION OF DESIGN AND CONSTRUCTION
BUREAU OF BRIDGES

SUPERSTRUCTURE DETAILS
EAST BOUND LANES
BRIDGE NO. LAK-2-0057 L&R
OVER RAMP
LAKE COUNTY STA 129+13.72
130+79.28

DESIGNED	DRAWN	TRACED	CHECKED	REVIEWED	DATE	REVISED
E.B.L.	R.M.		R.H.N.	BFG	11-19-58	