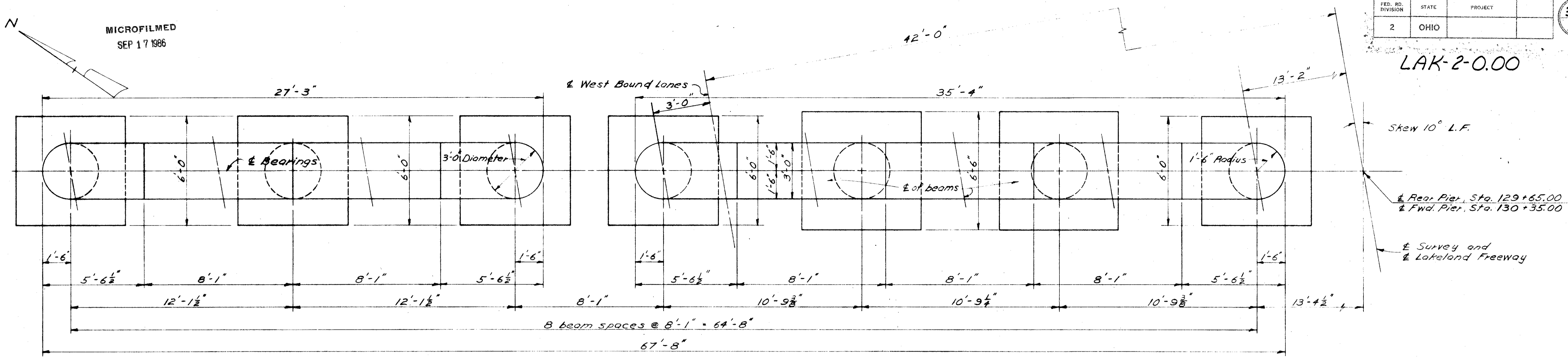


MICROFILMED  
SEP 17 1986

FED. RD. DIVISION	STATE	PROJECT	
2	OHIO		

333  
394

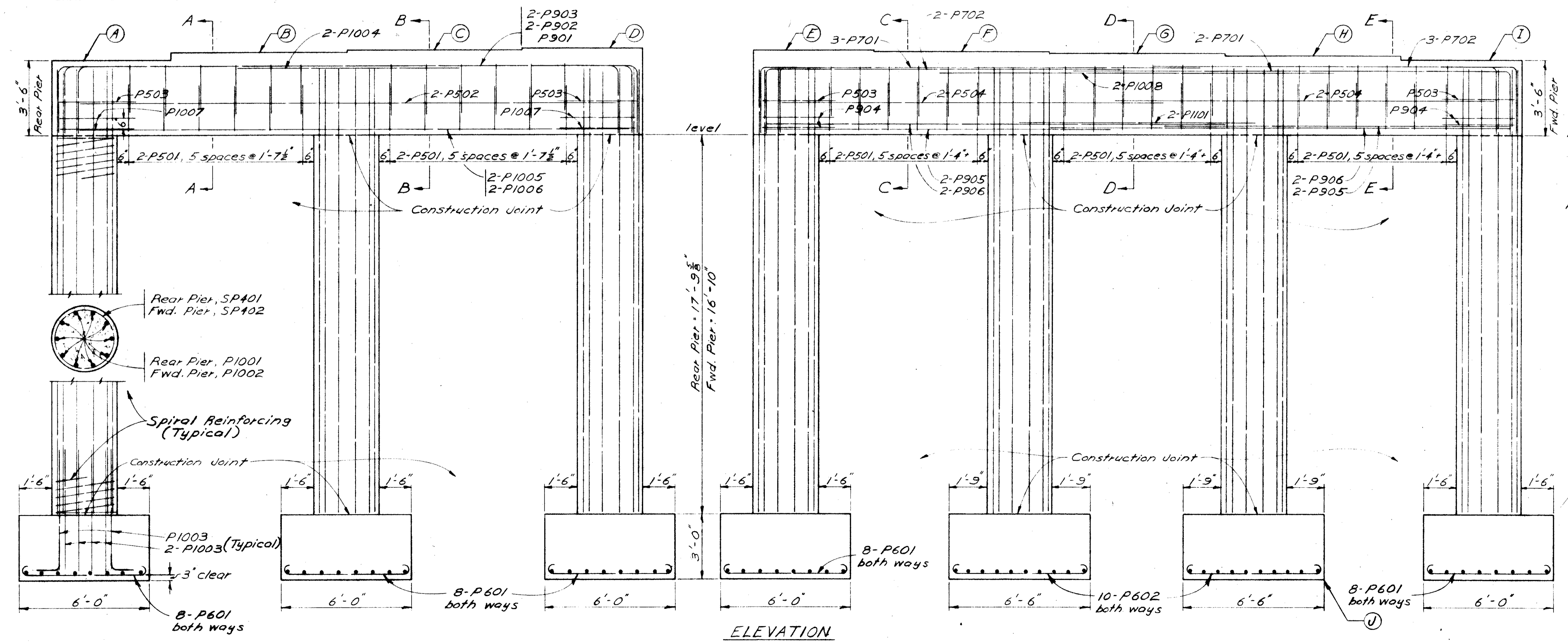
LAK-2-0.00



ELEVATIONS

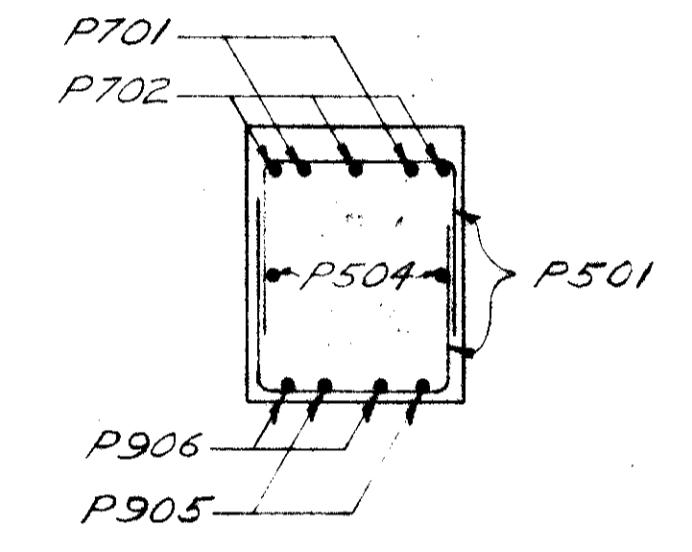
POINT	A	B	C	D	E	F	G	H	I	J
REAR PIER	664.30	664.65	664.77	664.77	664.76	664.76	664.75	664.65	664.55	640.00
FWD. PIER	663.45	663.80	663.87	663.78	663.69	663.61	663.53	663.43	663.33	640.00

PLAN

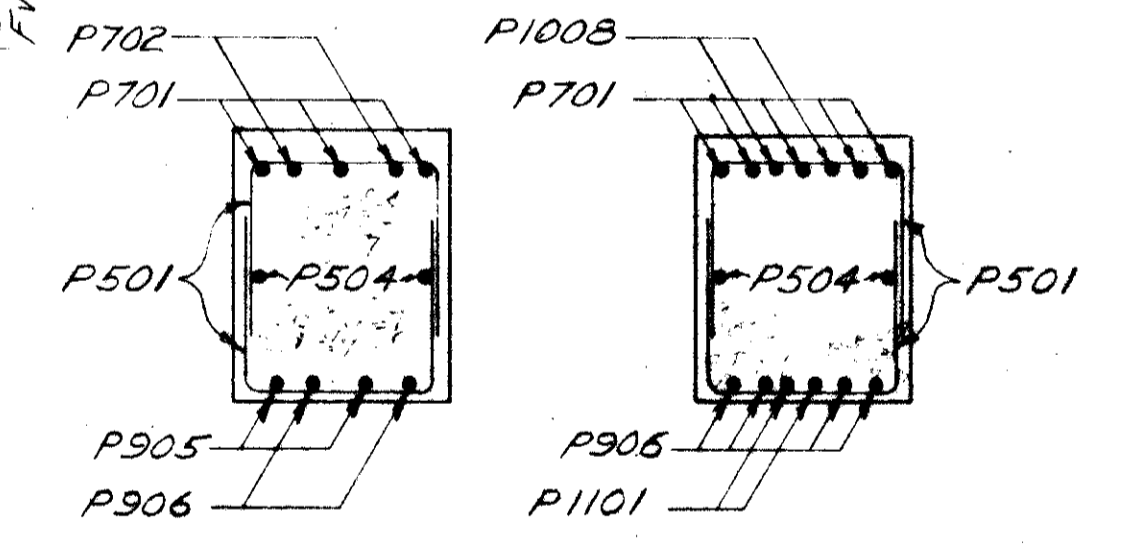


ELEVATION

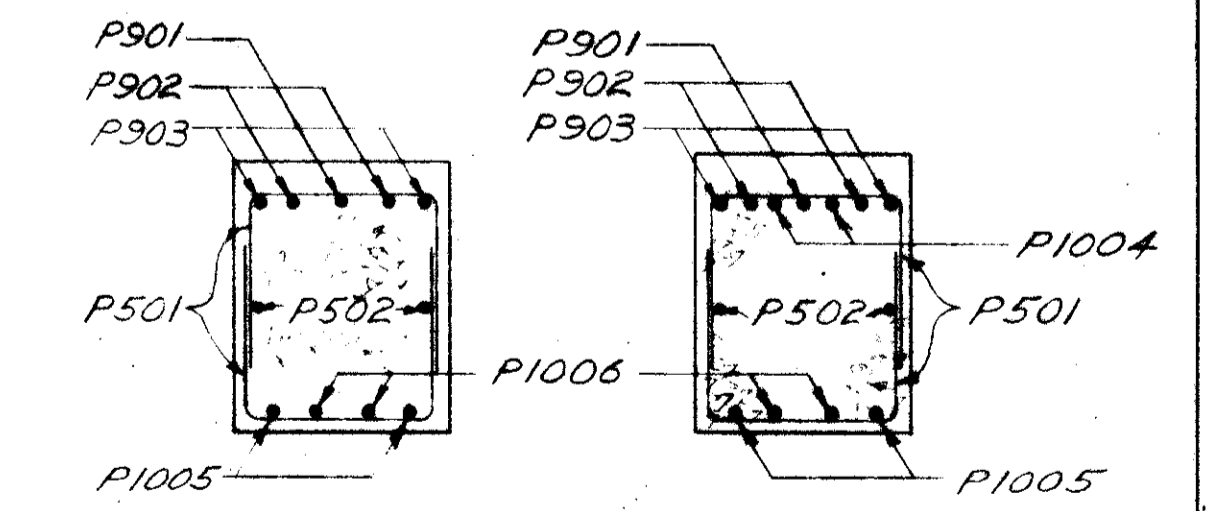
SPECIAL CARE shall be taken in placing reinforcing steel in the caps so that it will not interfere with the drilling of anchor bolt holes.



SECTION E-E



SECTION C-C SECTION D-D



SECTION A-A SECTION B-B

STATE OF OHIO  
DEPARTMENT OF HIGHWAYS  
DIVISION OF DESIGN AND CONSTRUCTION  
BUREAU OF BRIDGES

**PIER DETAILS  
WEST BOUND LANES  
BRIDGE NO. LAK-2-00574R  
OVER RAMP  
LAKE COUNTY Sta. 129+13.72  
130+79.28**

DESIGNED	DRAWN	TRACED	CHECKED	REVIEWED	DATE	REVISED
E.B.L.	E.B.L.		R.H.N.	BPG	11-19-58	