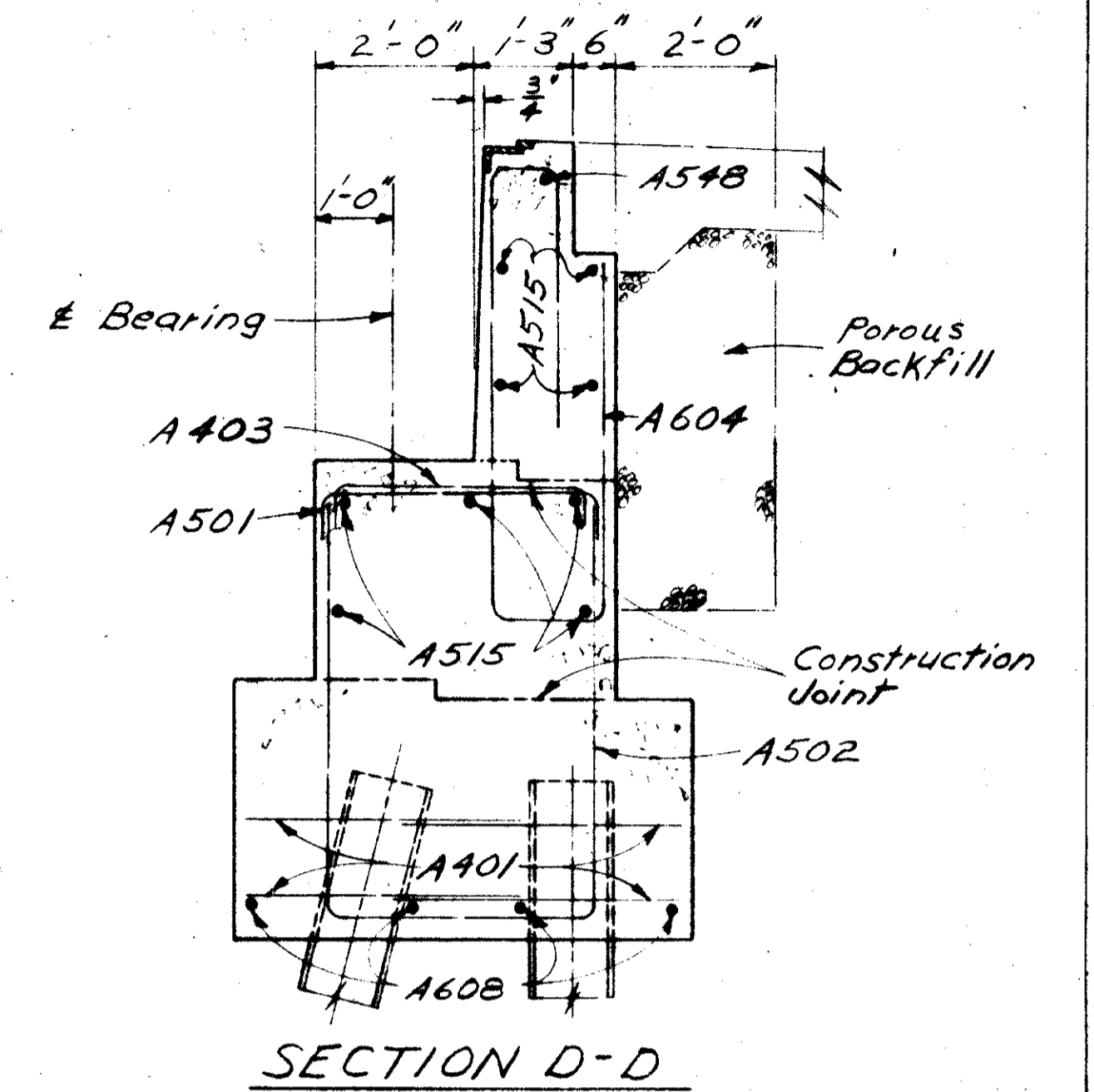
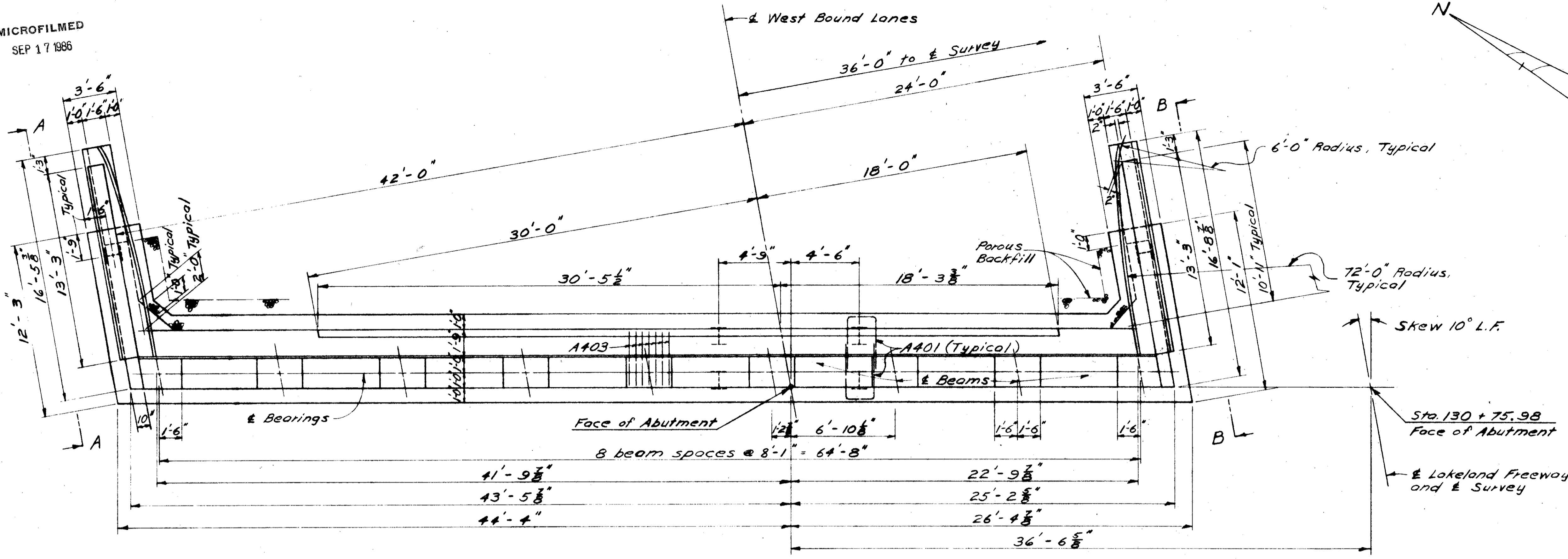


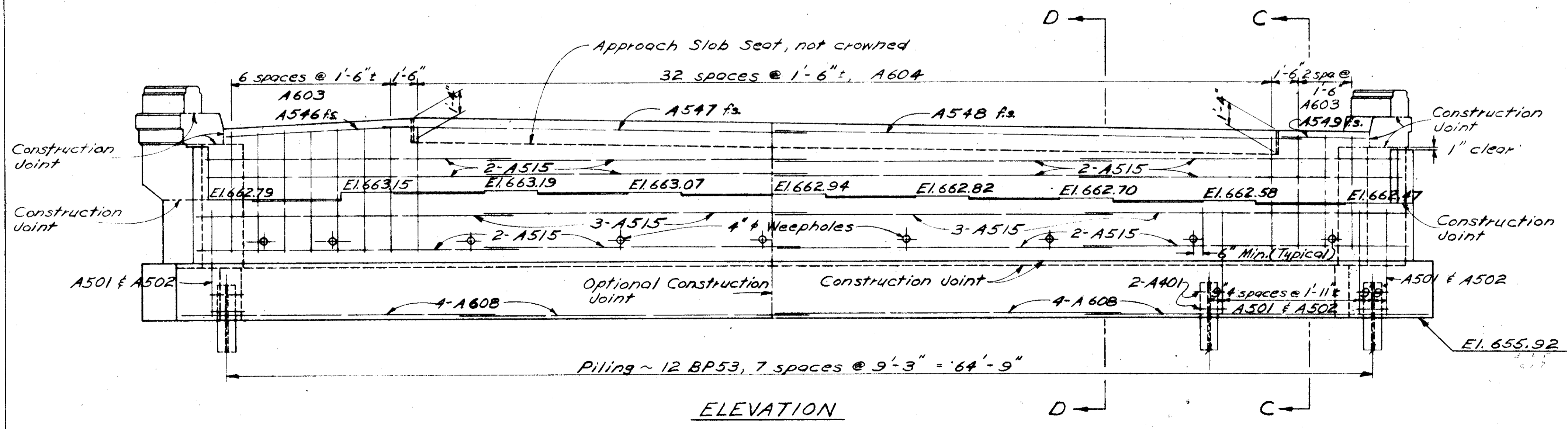
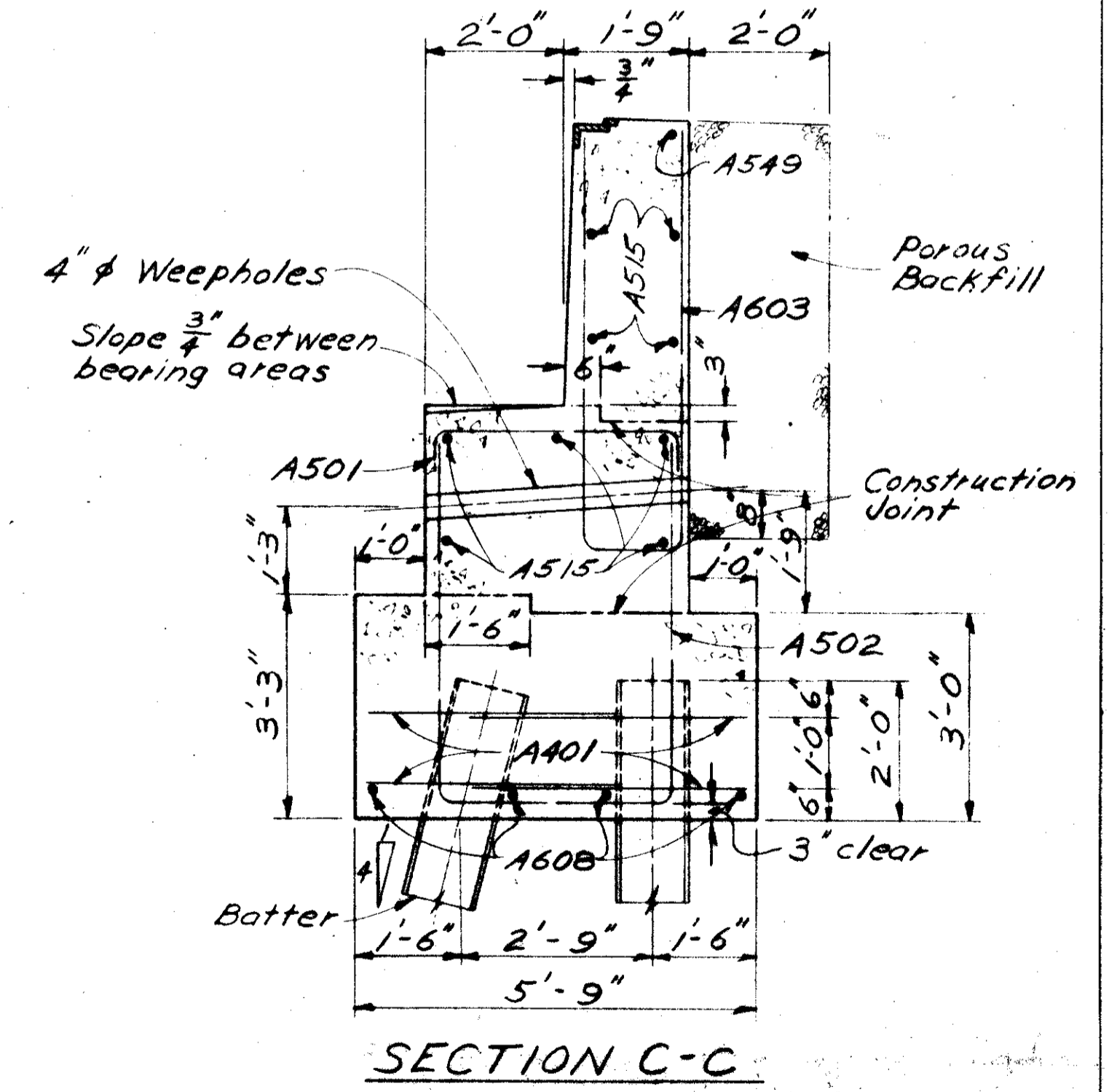
MICROFILMED
SEP 17 1986

FED. RD. DIVISION	STATE	PROJECT	329 394
2	OHIO		

LAK-2-0.00



See Sheet No. 331 for Views A-A & B-B
See Sheet No. 331 for Guard Rail details.



STATE OF OHIO DEPARTMENT OF HIGHWAYS DIVISION OF DESIGN AND CONSTRUCTION BUREAU OF BRIDGES						
FORWARD ABUTMENT DETAILS WEST BOUND LANES BRIDGE NO. LAK-2-0057 L&R OVER RAMP LAKE COUNTY Sta. 129 + 13.72 130 + 79.28						
DESIGNED	DRAWN	TRACED	CHECKED	REVIEWED	DATE	REVISED
E.B.L.	E.B.L.		R.H.N.	BFG	11-19-58	