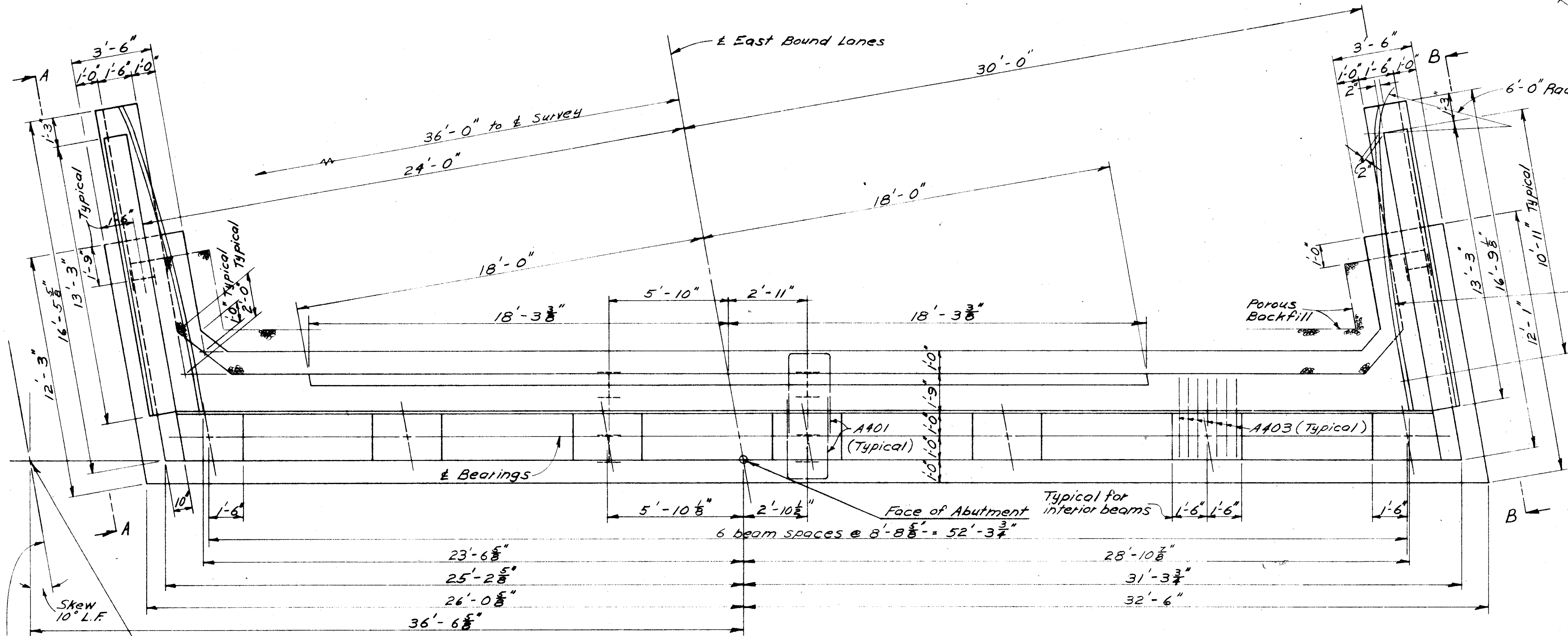


MICROFILMED  
SEP 17 1986

FED. RD. DIVISION	STATE	PROJECT
2	OHIO	

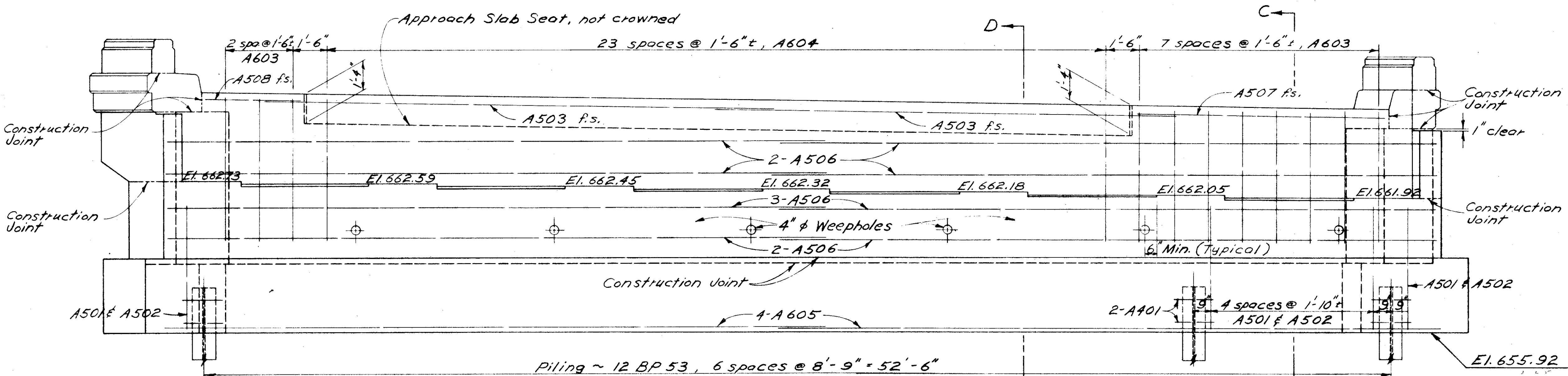
328  
394

LAK-2-0.00

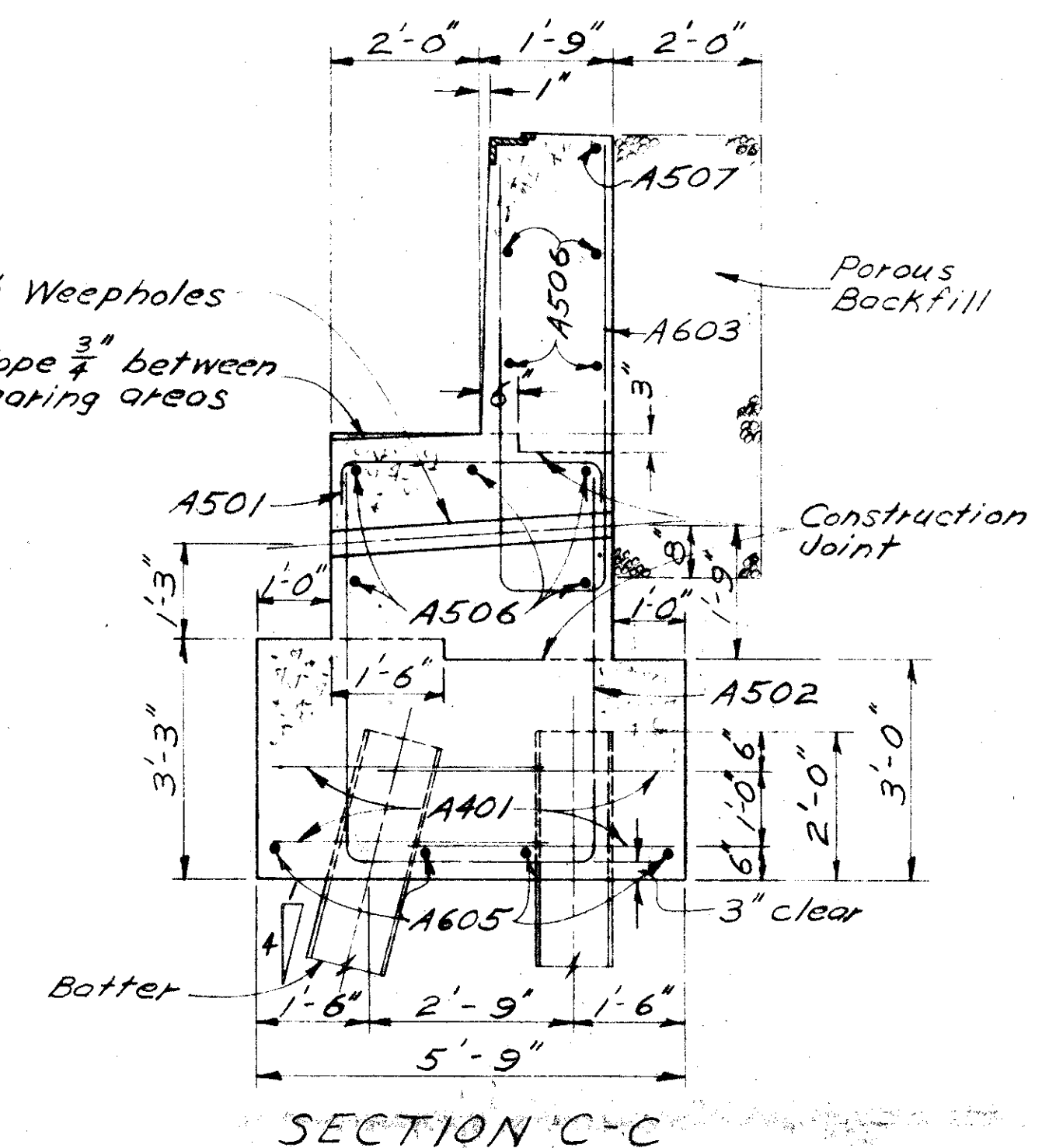
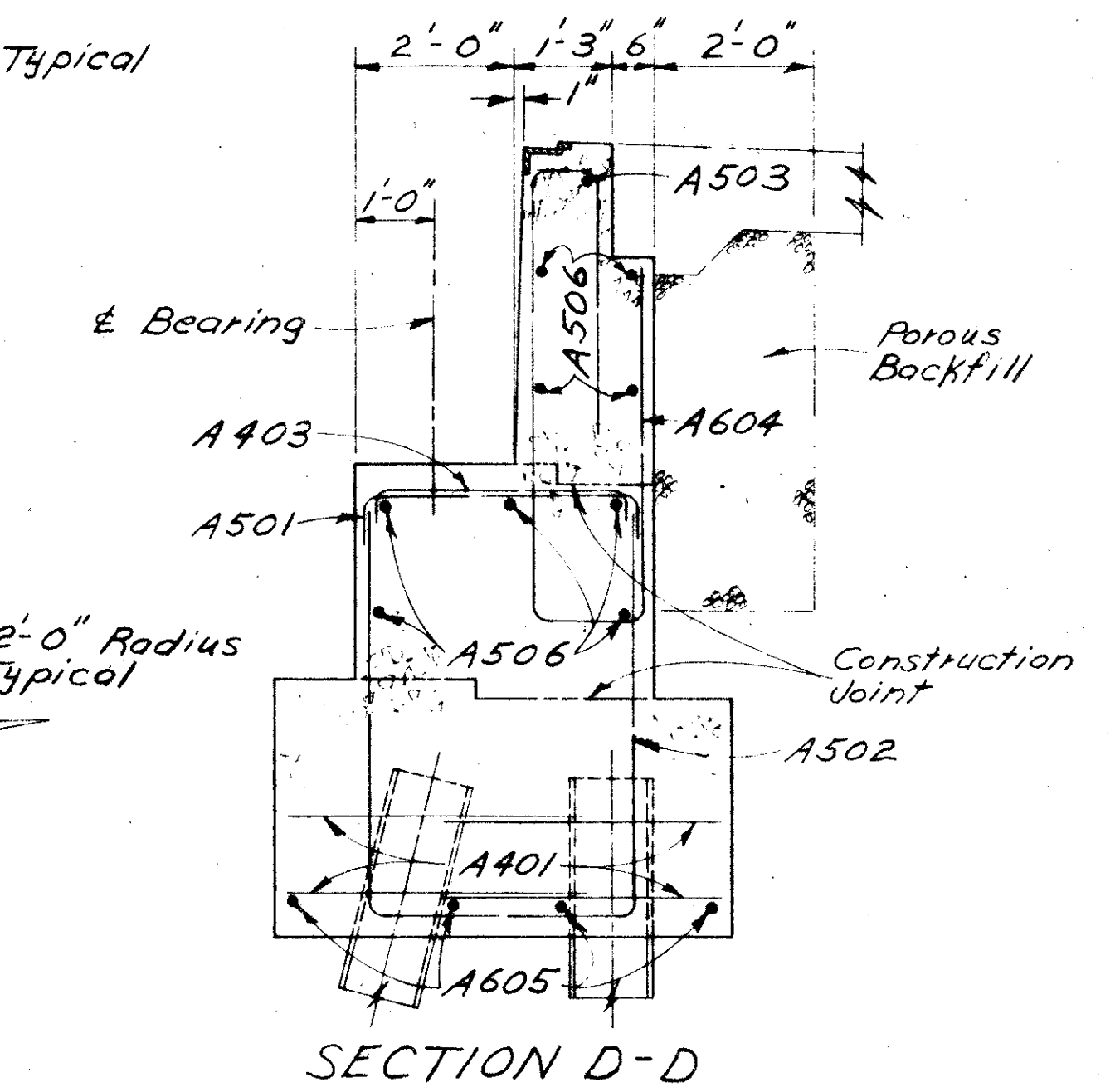


PLAN

See Sheet No. 331 for Views A-A & B-B.  
See Sheet No. 331 for Guard Rail details.



ELEVATION



STATE OF OHIO DEPARTMENT OF HIGHWAYS DIVISION OF DESIGN AND CONSTRUCTION BUREAU OF BRIDGES					
<b>FORWARD ABUTMENT DETAILS EAST BOUND LANES</b>					
BRIDGE NO. LAK-2-0057 L&R OVER RAMP					
LAKE COUNTY Sta. 129 + 13.72 130 + 79.28					
DESIGNED	DRAWN	TRACED	CHECKED	REVIEWED	DATE
E.B.L.	E.B.L.		R.H.N.	BFG	11-19-50