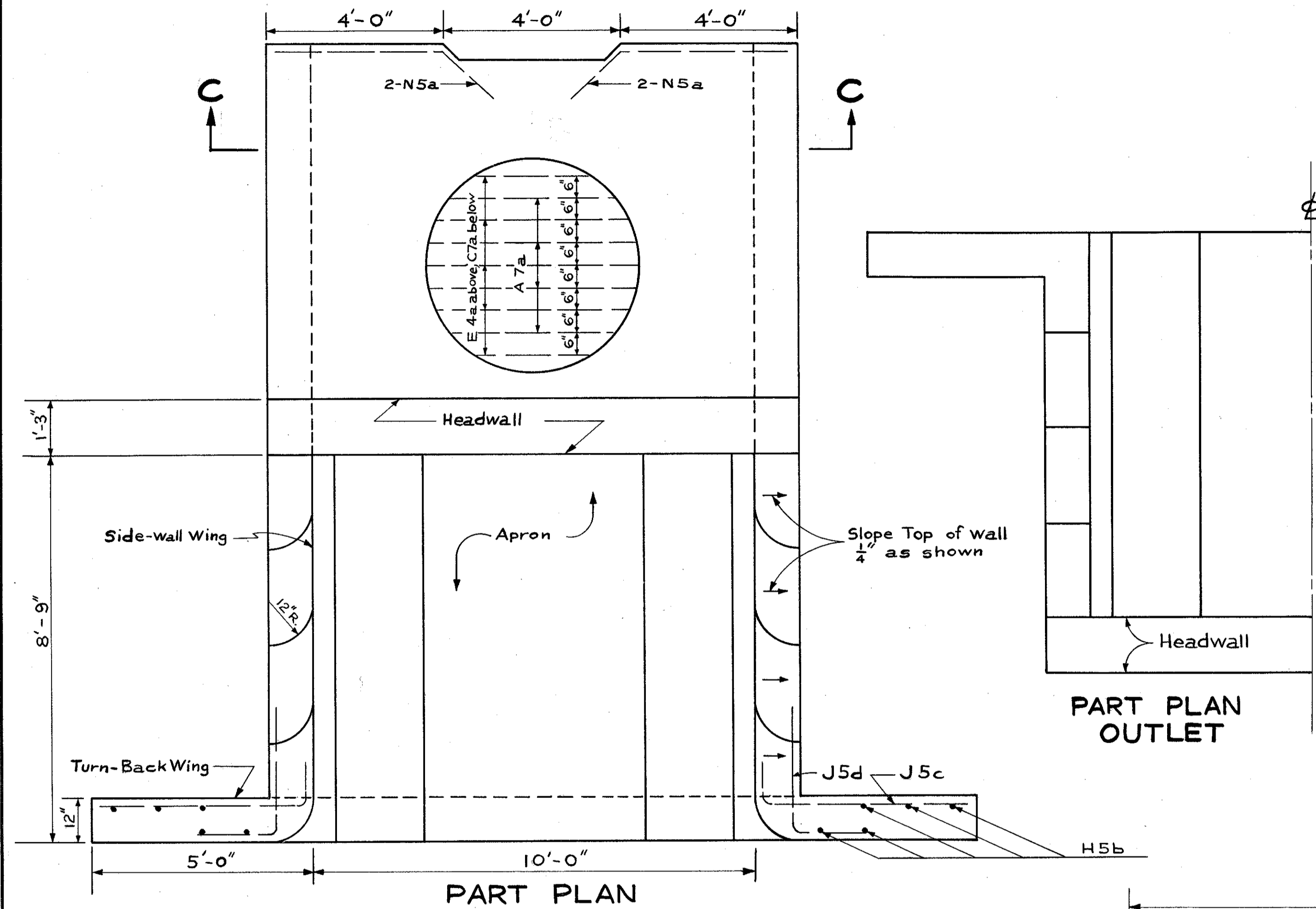


10' x 5' CONC. CULVERT ENTRANCE DETAILS

LAKE COUNTY
LAK - 2-0.00



S 4 REINFORCING STEEL

MARK	SIZE DIA.	N ^o	LENGTH	TOTAL FT.	WT. LBS.	SHAPE
A7a	7/8" φ	33	14'-2"	467.61	955.79	BENT
B8a	1"	51	17'-10"	909.33	2427.91	BENT
C7a	7/8"	35	11'-6"	402.50	822.71	STRAIGHT
D8a	1"	53	11'-6"	609.50	1627.37	STRAIGHT
E4a	1/2"	39	11'-6"	448.50	299.60	STRAIGHT
F4a	1/2"	53	17'-5"	927.50	619.57	BENT
G5a	5/8"	140	6'-4"	886.20	924.31	BENT
G5b	5/8"	16	7'-4"	117.28	122.32	BENT
G5c	5/8"	16	6'-3"	100.00	104.30	BENT
G5d	5/8"	20	5'-2"	103.40	107.85	BENT
G5e	5/8"	16	4'-1"	65.28	68.09	BENT
H5a	5/8"	30	5'-3"	157.50	164.27	STRAIGHT
H5b	5/8"	20	6'-8"	133.40	139.14	STRAIGHT
H5c	5/8"	4	6'-1"	24.32	25.37	STRAIGHT
H5d	5/8"	4	3'-11"	15.72	16.40	STRAIGHT
H5e	5/8"	4	2'-10"	11.32	11.81	STRAIGHT
J5a	5/8"	42	4'-3"	178.50	186.18	BENT
J5b	5/8"	24	3'-11"	94.32	98.38	BENT
J5c	5/8"	16	5'-6"	88.00	91.78	BENT
J5d	5/8"	16	4'-6"	72.00	75.10	BENT
J5e	5/8"	24	3'-4"	79.92	83.36	BENT
K5c	5/8"	20	17'-2"	343.40	358.17	STRAIGHT
K5d	5/8"	8	17'-3"	138.00	143.93	STRAIGHT
K5e	5/8"	10	17'-0"	170.00	177.31	STRAIGHT
K5f	5/8"	6	19'-6"	117.00	122.03	STRAIGHT
K5g	5/8"	16	17'-1"	273.28	285.03	STRAIGHT
K5h	5/8"	30	17'-7"	527.40	550.08	STRAIGHT
K5j	5/8"	30	8'-8"	260.10	271.28	STRAIGHT
M5a	5/8"	4	6'-4"	25.32	26.41	BENT
M5b	5/8"	4	4'-8 1/2"	18.88	19.69	BENT
N5a	5/8"	24	5'-3 1/2"	126.72	132.17	BENT
N5b	5/8"	24	3'-8 1/2"	89.04	92.87	BENT

TOTAL ENTRANCE, EXIT, & BARREL "B" = 11,150.58 LBS.

