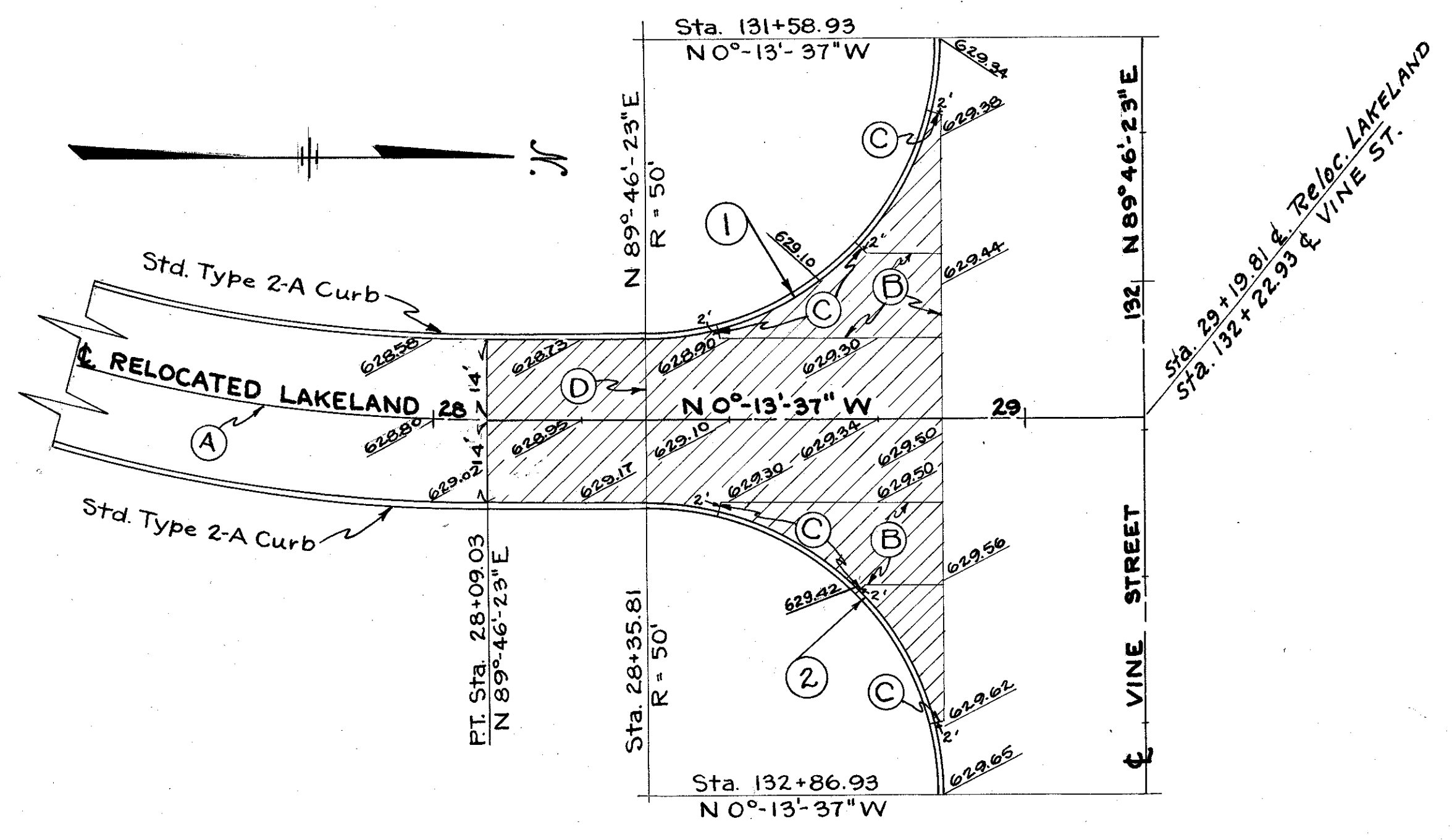


# EXTRA AREA DETAIL - RELOCATED LAKELAND

SCALE 1" = 20'



**CURVE DATA**

① & ② Δ = 90°  
R = 50'  
L = 78.54'

③ & ⑤ Δ = 124°-00'-12"  
R = 30'  
L = 64.93'

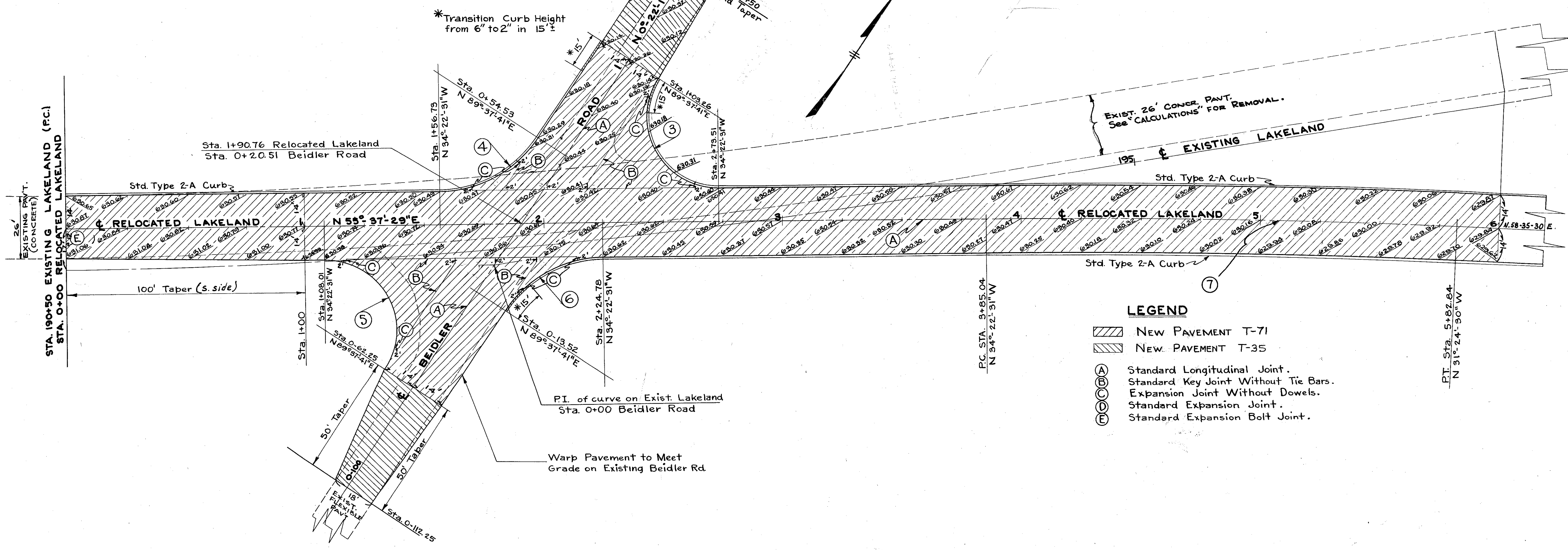
④ & ⑥ Δ = 55°-59'-48"  
R = 50'  
L = 48.87'

**EXTRA AREA QUANTITIES**

LOCATION	T-71 9" REINF. PORT CEMT. CONC. PAVT. SQ. YDS.	I-22 SUBBASE CU. YDS.	T-30 BITUM. PRIME COAT GAL.	B-19 CRUSHED AGGR. BASE COURSE CU. YDS.	I-12 TYPE 2A CURB LIN. FT.	T-35 1 1/2" ASPH. CONCRETE SURF. COURSE CU. YD.	B-35 2 1/2" ASPH. CONCRETE LEVEL COURSE CU. YD.
0+00 to 6+00 INCL. RETURNS	2514	444			1069.8		
0+112.25 to 0+62.25 BEIDLER		64	143	74		17	28
28+09.03 to Vine St.	363	65			210.6		
<b>TOTAL</b>	<b>2877</b>	<b>573</b>	<b>143</b>	<b>74</b>	<b>1280.4</b>	<b>17</b>	<b>28</b>

⑦ Δ = 2-58-01  
D<sub>s</sub> = 1°-30'  
R = 3819.72  
T = 98.92  
L = 197.80  
Ch = 197.77  
EX = 1.28

**NOTE:**  
See Typical Section on Sheet N-109 for T-35 Pavement. Removal of Existing Flexible Pavt. to be paid for as part of E-1 Excavation



**LEGEND**

▨ New Pavement T-71  
▨ New Pavement T-35

Ⓐ Standard Longitudinal Joint.  
Ⓑ Standard Key Joint Without Tie Bars.  
Ⓒ Expansion Joint Without Dowels.  
Ⓓ Standard Expansion Joint.  
Ⓔ Standard Expansion Bolt Joint.