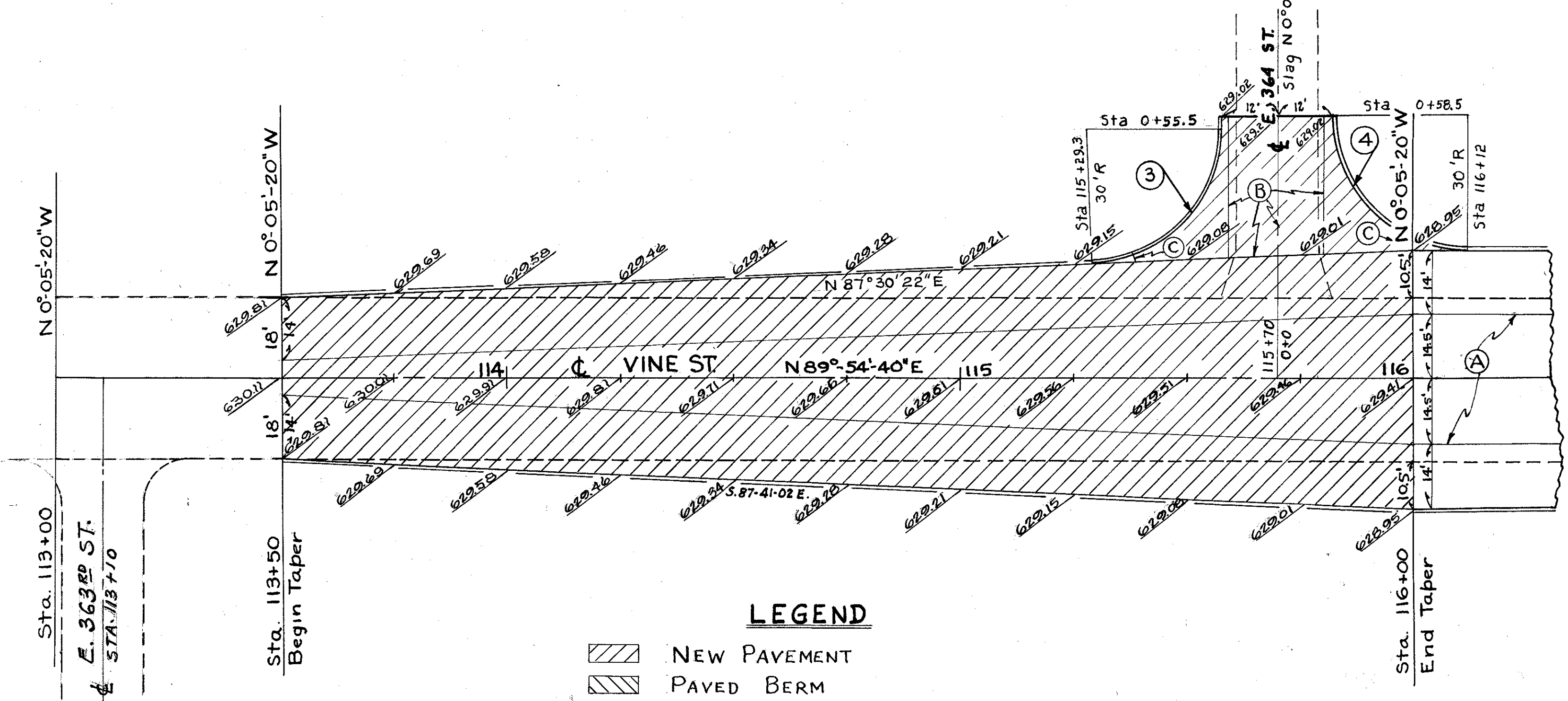


EXTRA AREA DETAIL - VINE ST.

SCALE 1"=20'

FED. RD. DIVISION	STATE	PROJECT	107 394
2	OHIO		

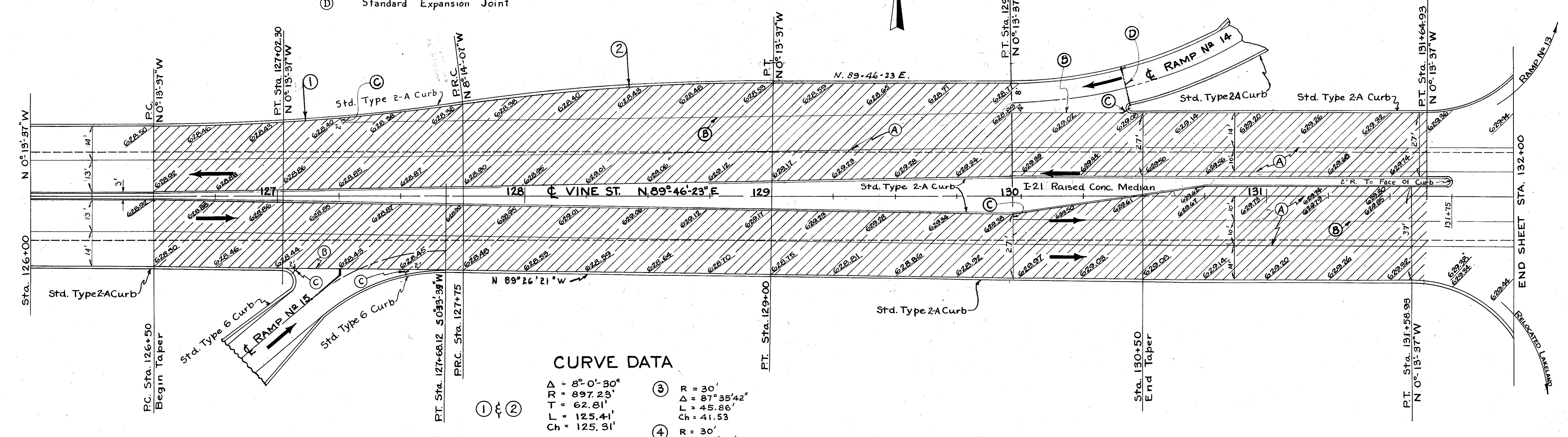
LAKE COUNTY
LAK - 2 - 0.00



LOCATION	T-71	I-22	I-12	I-21
	9" REINF. CONCRETE SQ. YDS.	CU. YDS.	TYPE 2A LIN. FT.	4" CONC. MEDIAN SQ. YDS.
113+50 to 116+00	1316	227	429.3	
E 364 TH ST.	132	24	96.5	
126+50 to 129+96.49	2366	406	628.0	
129+96.49 to 131+64.93	1189	260	288.4	
126+50 to 131+75		124	1054.0	407
TOTAL	5003	1041	2496.2	407

- LEGEND**
- NEW PAVEMENT
 - PAVED BERM
 - Standard Longitudinal Joint
 - Standard Key Joint Without Tie Bars
 - Expansion Joint Without Dowels
 - Standard Expansion Joint

NOTE
FOR REMOVAL OF EXISTING PAVEMENT AND CURB ON VINE ST. SEE CALCULATIONS



CURVE DATA

①	$\Delta = 8^\circ 0' 30''$	③	$R = 30'$
②	$R = 897.23'$		$\Delta = 87^\circ 35' 42''$
	$T = 62.81'$		$L = 45.86'$
	$L = 125.41'$		$Ch = 41.53$
	$Ch = 125.31'$	④	$R = 30'$
			$\Delta = 90^\circ$
			$L = 47.12'$
			$Ch = 42.43$